

# Outage Submission: Changing an Existing Request (Forced)

1. Log into CROW > Select "Outage Requests" tab
2. Locate specific outage and double-click the request
3. Click "Request Change". (**NOTE:** Displayed data fields are unavailable for change on this screen.)
4. A new window appears. Make the desired changes and click "Submit"
5. **SUCCESS:**  
The application returns to the Request Summary with a notification in GREEN.

✔ Submit on 1-00000004 rev. 1 was completed successfully.

### **CONFLICT:**

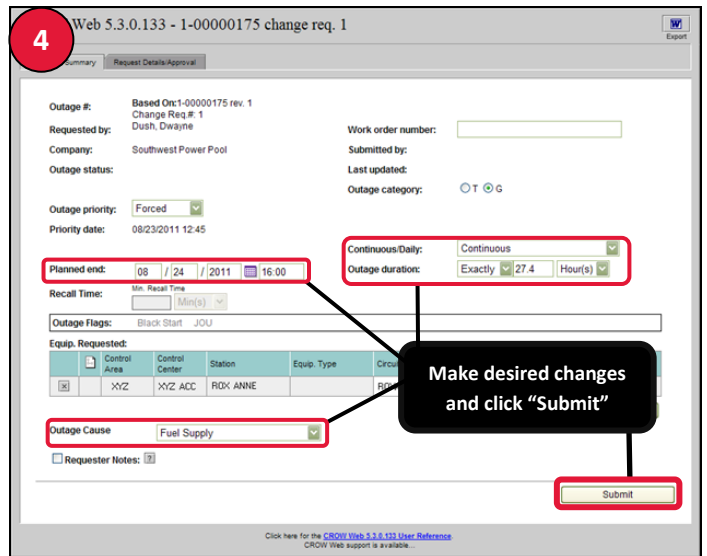
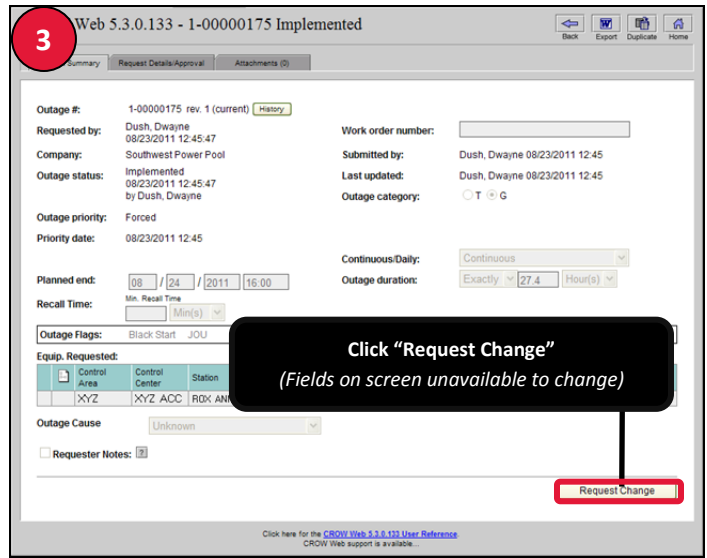
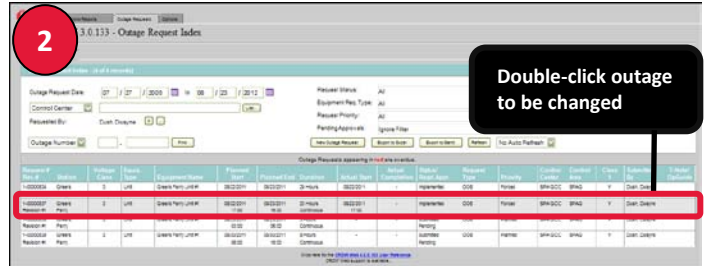
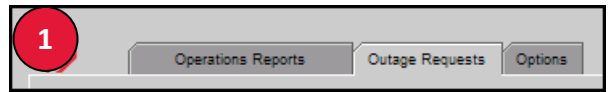
If the outage request conflicts with an existing outage request, the user will receive an error.

❗ **Errors in Implement...**

The Outage Request could not be updated because of the following errors:

You cannot submit an outage request that conflicts with another outage request.

The following conflict(s) exist for this outage request:  
[1-00000005](#)



---

## Revision History

---

Date or Version Number	Author	Change Description	Comments
08/15/2011	Dwayne Dush	Initial Draft	