

Post-ROFR Award Process

AEP Thoughts

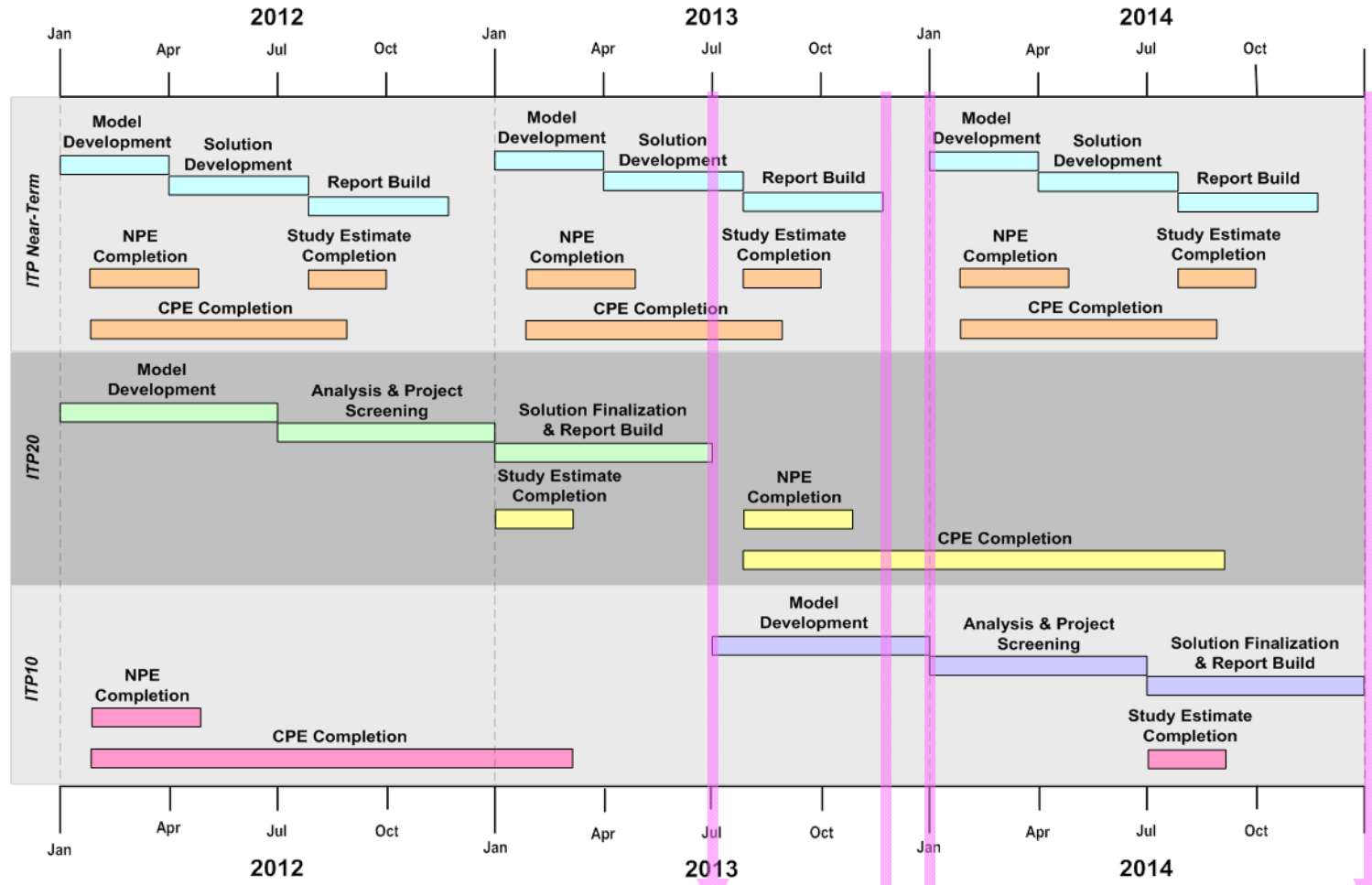
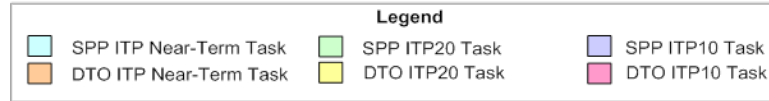
SPP Screening

- Providers
 - Financial Capacity
 - 24 hour control center
 - Maintenance Plan
 - Regulatory
- Packages
 - Life-cycle cost
 - System Performance
 - Schedule / Clearances
 - Interface Requirements
 - Component Estimates

Process

- Packages may be submitted to SPP at any time, but actual processing of submitted packages begin with the ITP20 cycle in 2014
- Packages are reviewed by SPP for completeness at the start of each ITP cycle
- One month prior to the evaluation of solutions in the ITP cycle, packages must be submitted to SPP to avoid being deemed incomplete
- Upon commencement of the evaluation of solutions in the ITP cycle, all accepted packages are posted as part of an open process
- SPP applies packages in the ITP based on the identified performance of each package and the problems exposed by SPP analysis
- Performance / benefits of each evaluated package is measured against the estimated cost of the upgrades to determine packages to be awarded NTCs
- If it is determined that no package effectively addresses problems identified by the SPP, then SPP will work with the incumbent transmission providers to estimate the SPP determined upgrades

Cost Estimate Process Timeline



SPP begins reviewing packages for acceptance

Deadline for packages that are incomplete

SPP awards packages

Packages become public