

SPP Draft Builder Model Criteria Options

SPCTF Meeting
March 9, 2012
Dallas, TX

Antoine Lucas
alucas@spp.org

501.614.3382



SPP Business Practice 7150

- **SPP Business Practice 7150 establishes weighted categories of evaluation criteria that culminate in a point system used to facilitate developer selection.**
 - **Project Expertise: Weighted 20 points**
 - **Safety program/Current/Past statistics: Weighted 15 points**
 - **Cost to customer: Weighted 20 points**
 - **Reliability/Quality/General Design: Weighted 15 points**
 - **Operations: Weighted 15 points**
 - **Maintenance: Weighted 15 points**

Project Expertise Criteria Considerations

- Project Expertise
 - Engineering
 - Permitting
 - Environmental
 - ROW Acquisition
 - Procurement
 - Project Management (including scope, schedule management)
 - Construction
 - Commissioning
 - Technology content
 - **Experience/Track Record**

Safety Program Criteria Considerations

- Safety program/Current/Past Statistics
 - Internal safety program
 - Contractor safety program
 - Safety performance record (program execution)
 - RFP conformance
 - **Record of Compliance with safety standards**
 - **Safety metrics**

Cost to Customer Criteria Consideration

- **Cost to Customer**
 - Estimated total cost of Project
 - Financing costs
 - FERC Incentives
 - Revenue Requirements
 - Lifetime cost of the project to customers
 - **Cost, ROI, all in**
 - **Material On Hand, ROW approval, Assets on hand**
 - **Credit Worthiness**
 - **Earnest Money**
 - **Time frame to construct**

Reliability/Quality Criteria Considerations

- Reliability/Quality/General Design
 - Type of Construction (wood, steel, design loading, etc.)
 - Estimated total owning costs
 - Losses (design efficiency)
 - Estimated life of construction
 - **Record of Compliance**
 - **Reliability metrics**
 - **Experience/Track Record**
 - **Construction technology, willingness and ability to meet standards**

Operations Criteria Considerations

- Operations
 - Control Center operations (staffing etc.)
 - NERC compliance –process/history
 - Storm/Outage response plan
 - Past reliability performance
 - **Record of Compliance**
 - **Reliability metrics**
 - **Experience/Track Record**
 - **Construction technology, willingness and ability to meet standards**

Maintenance Criteria Considerations

- Maintenance
 - Staffing
 - Maintenance plans
 - Equipment
 - Crew training
 - Maintenance performance/expertise
 - NERC compliance-process/history
 - **Restoration Experience**

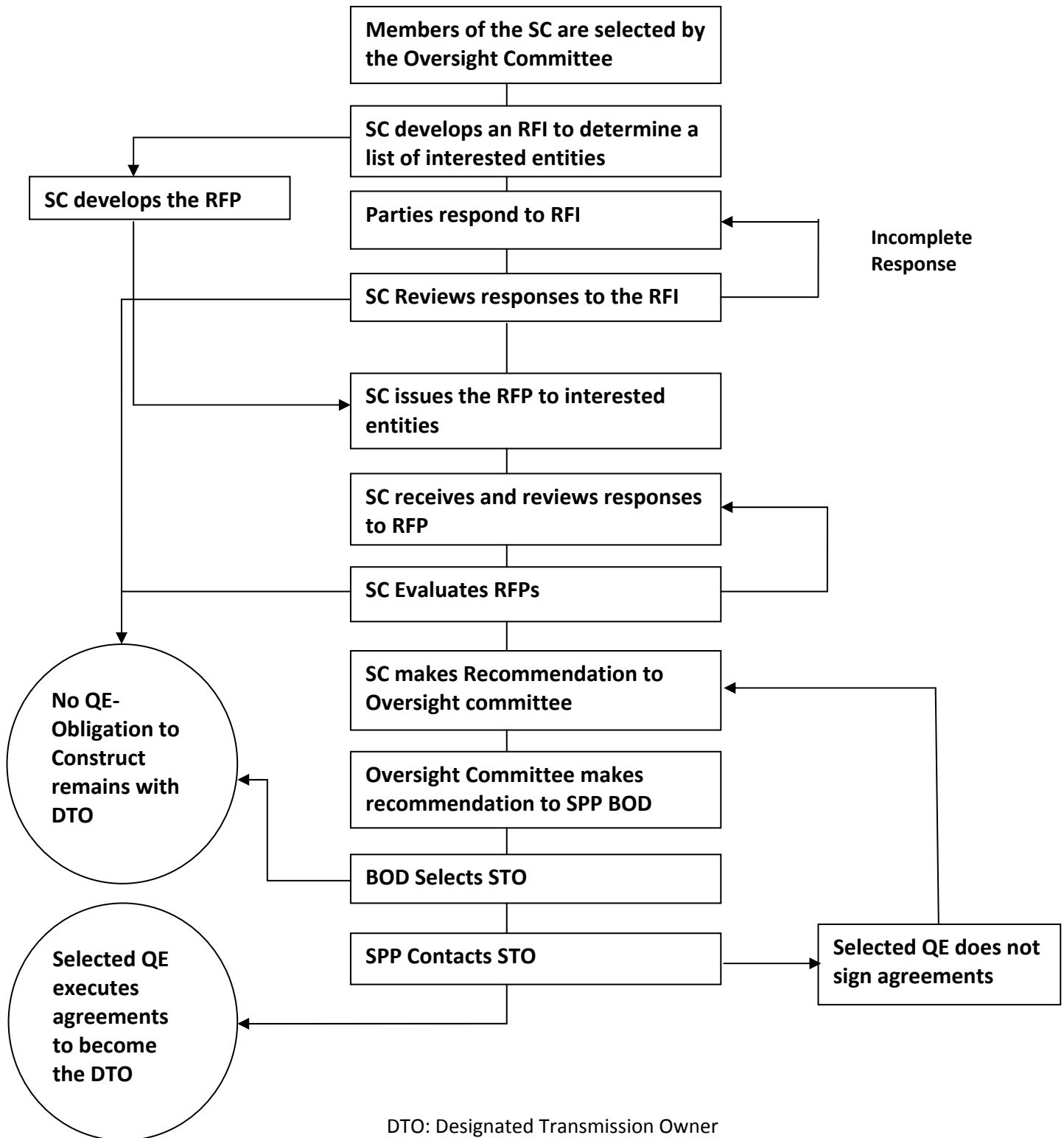
Criteria Weighting Assumptions

- How should points be assigned to transmission developers for each criterion?
- What is the appropriate level of subjective decision making?
- What aspects of the evaluation be purely objective or standardized?

Antoine Lucas: 501-614-3382, alucas@spp.org

QUESTIONS?

Business Practice 7150 - Transmission Owner Selection Process



DTO: Designated Transmission Owner

QE: Qualified Entity

RFI: Request for Information

RFP: Request for Proposals

SC: Selection Committee

STO: Selected Transmission Owner