

PRC-004 Changes

Review changes of new version going into effect on July 1, 2016

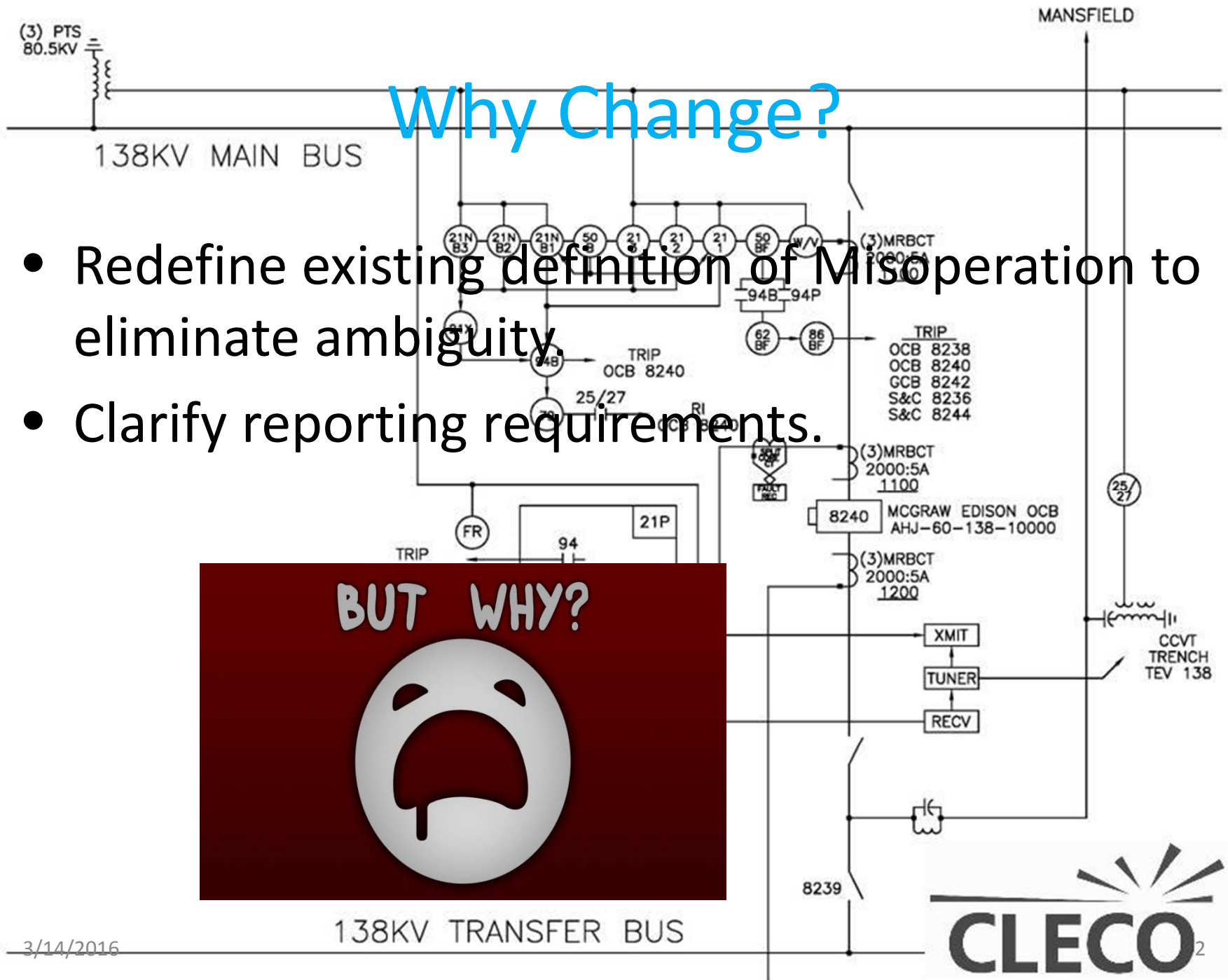
Why Change?

- Redefine existing definition of Misoperation to eliminate ambiguity.
- Clarify reporting requirements.



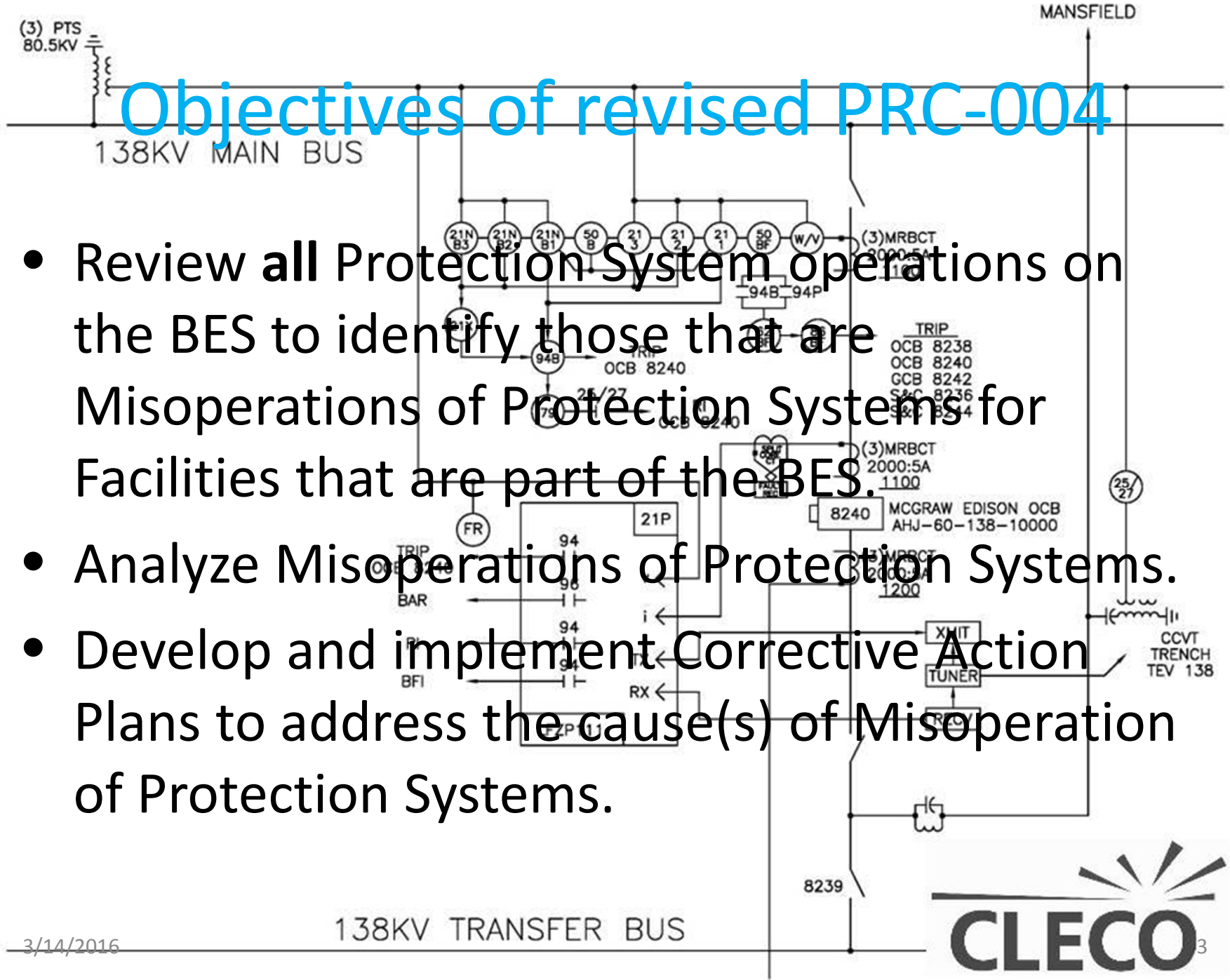
138KV TRANSFER BUS

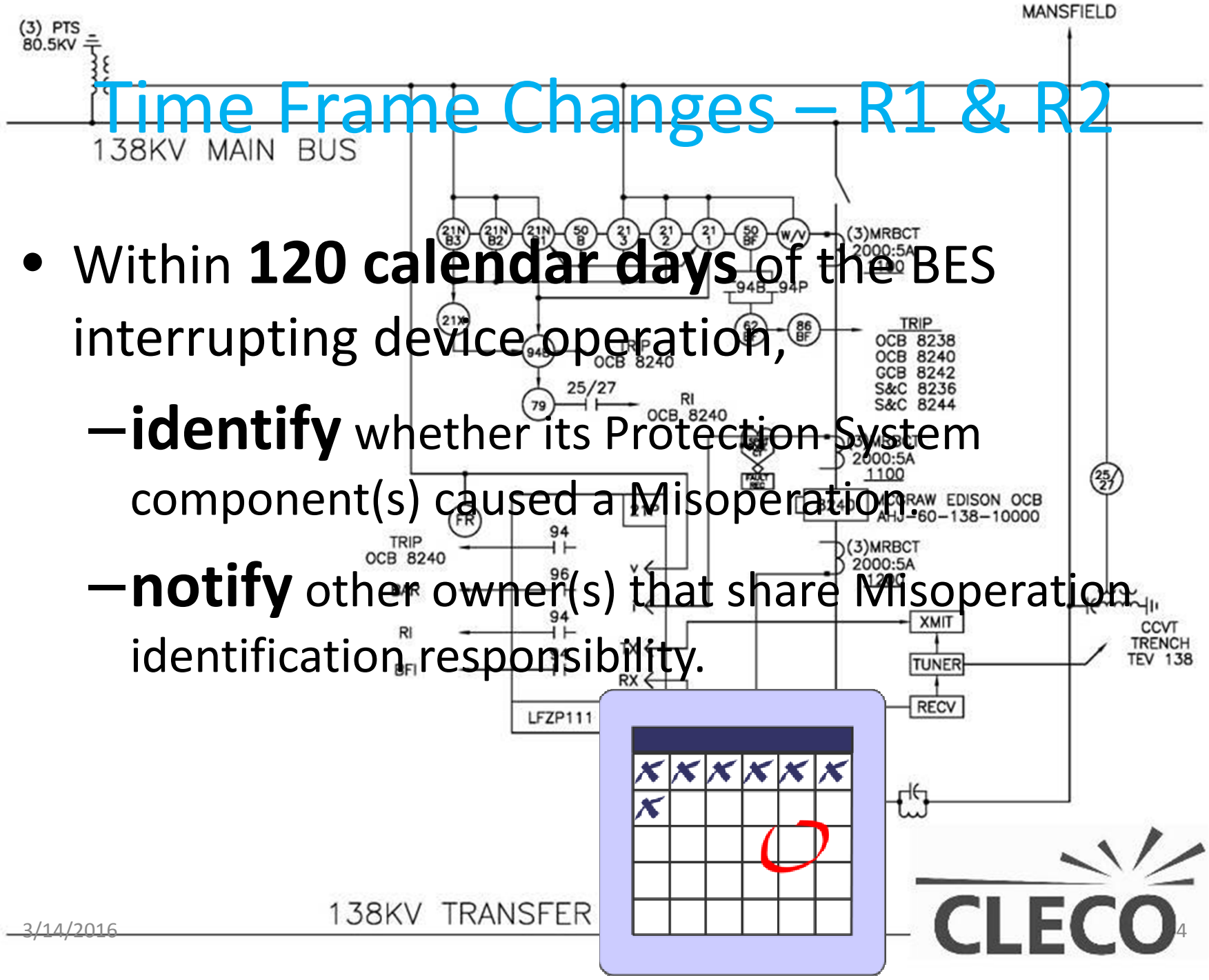
3/14/2016



Objectives of revised PRC-004

- Review **all** Protection System operations on the BES to identify those that are Misoperations of Protection Systems for Facilities that are part of the BES.
- Analyze Misoperations of Protection Systems.
- Develop and implement Corrective Action Plans to address the cause(s) of Misoperation of Protection Systems.



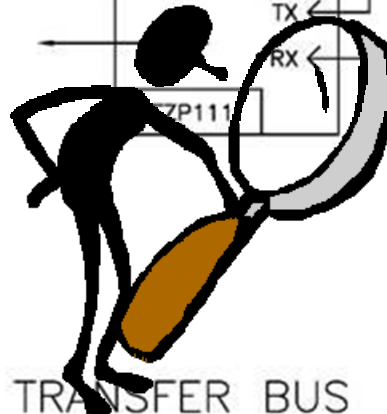


Time Frame Changes – R1 & R2

- Within **120 calendar days** of the BES interrupting device operation,
 - **identify** whether its Protection System component(s) caused a Misoperation
 - **notify** other owner(s) that share Misoperation identification responsibility.

Time Frame Changes cont. - R3

- Within the later of **60 calendar days** notification or **120 calendar days** of BES interrupting device operation,
 - **identify** whether its Protection System component(s) caused a Misoperation.



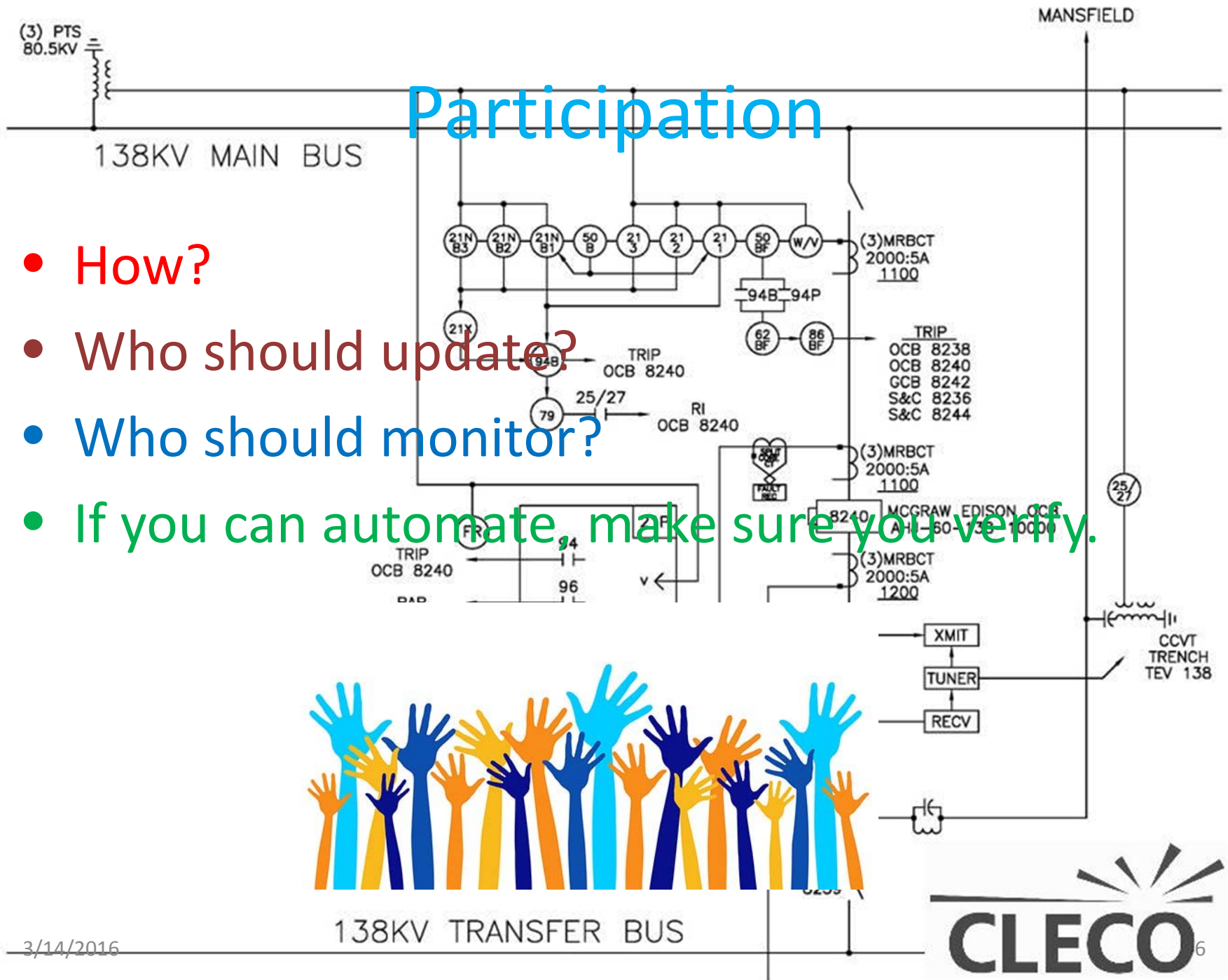
3/14/2016

138KV TRANSFER BUS



Participation

- How?
- Who should update?
- Who should monitor?
- If you can automate, make sure you verify.



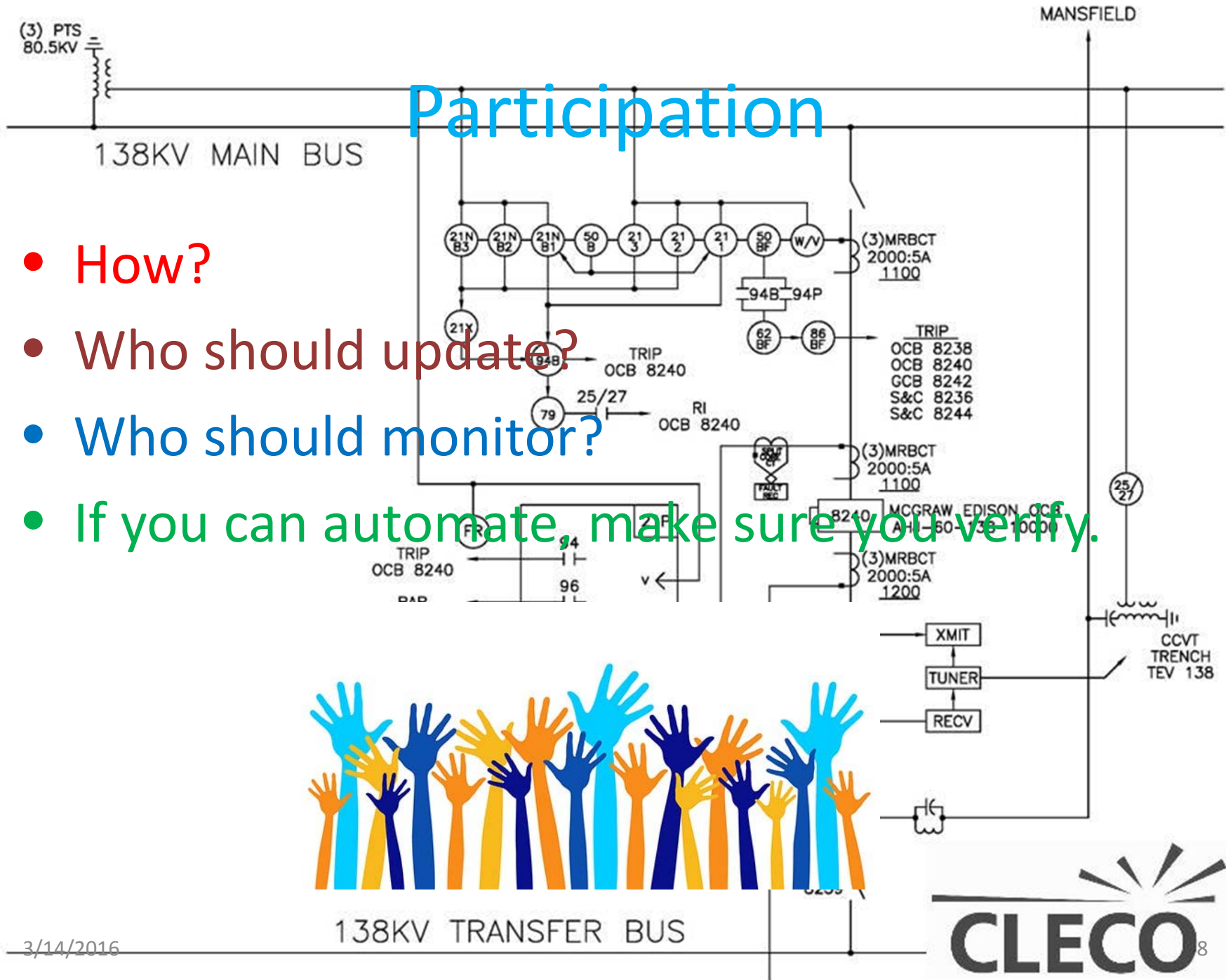
Continued Investigation – R4

- Perform investigative action(s) at least once every **two full calendar quarters** after the Misoperation was first identified until:
 1. The identification of the cause(s) of the Misoperation; or
 2. A declaration that no cause was identified.



Participation

- How?
- Who should update?
- Who should monitor?
- If you can automate, make sure you verify.



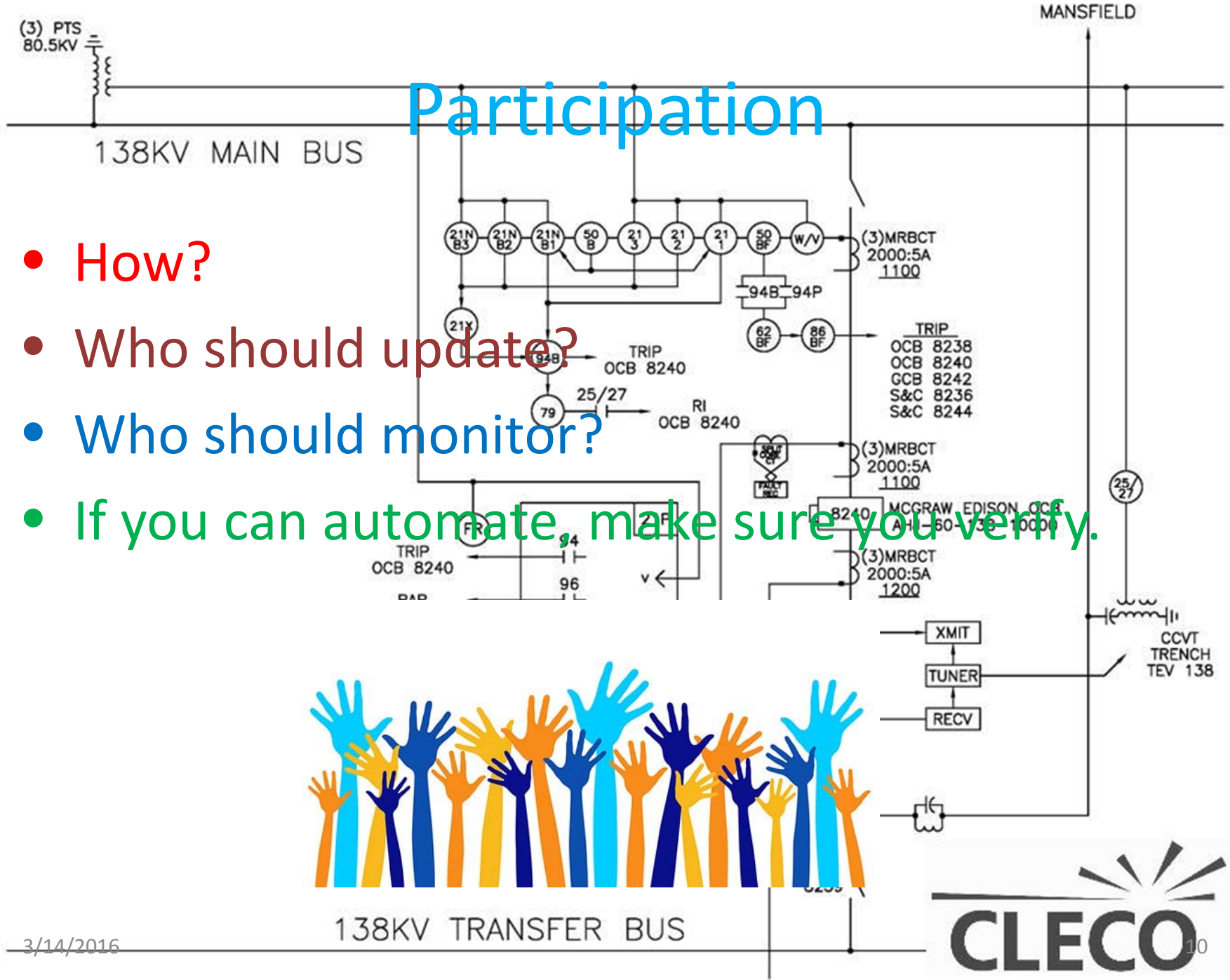
Develop a CAP – R5

- Within **60 calendar days** of first identifying a cause of the Misoperation:
 - Develop a Corrective Action Plan (“CAP”) for the identified Protection System component(s), and
 - Evaluate the CAP’s applicability to the entity’s other Protection Systems including other location; or
 - Declare why corrective actions are beyond the entity’s control or would not improve BES reliability, and that no further actions will be taken.



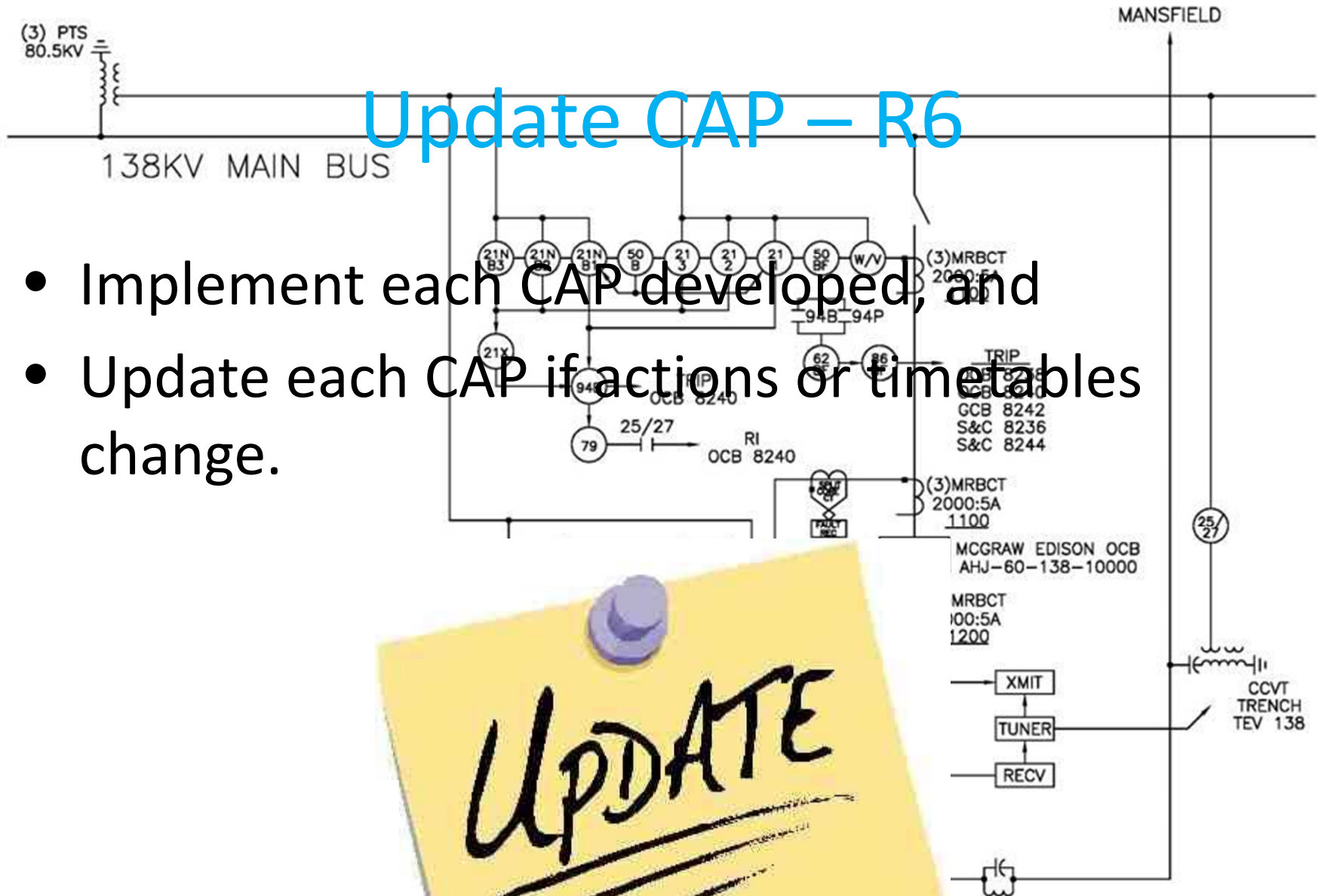
Participation

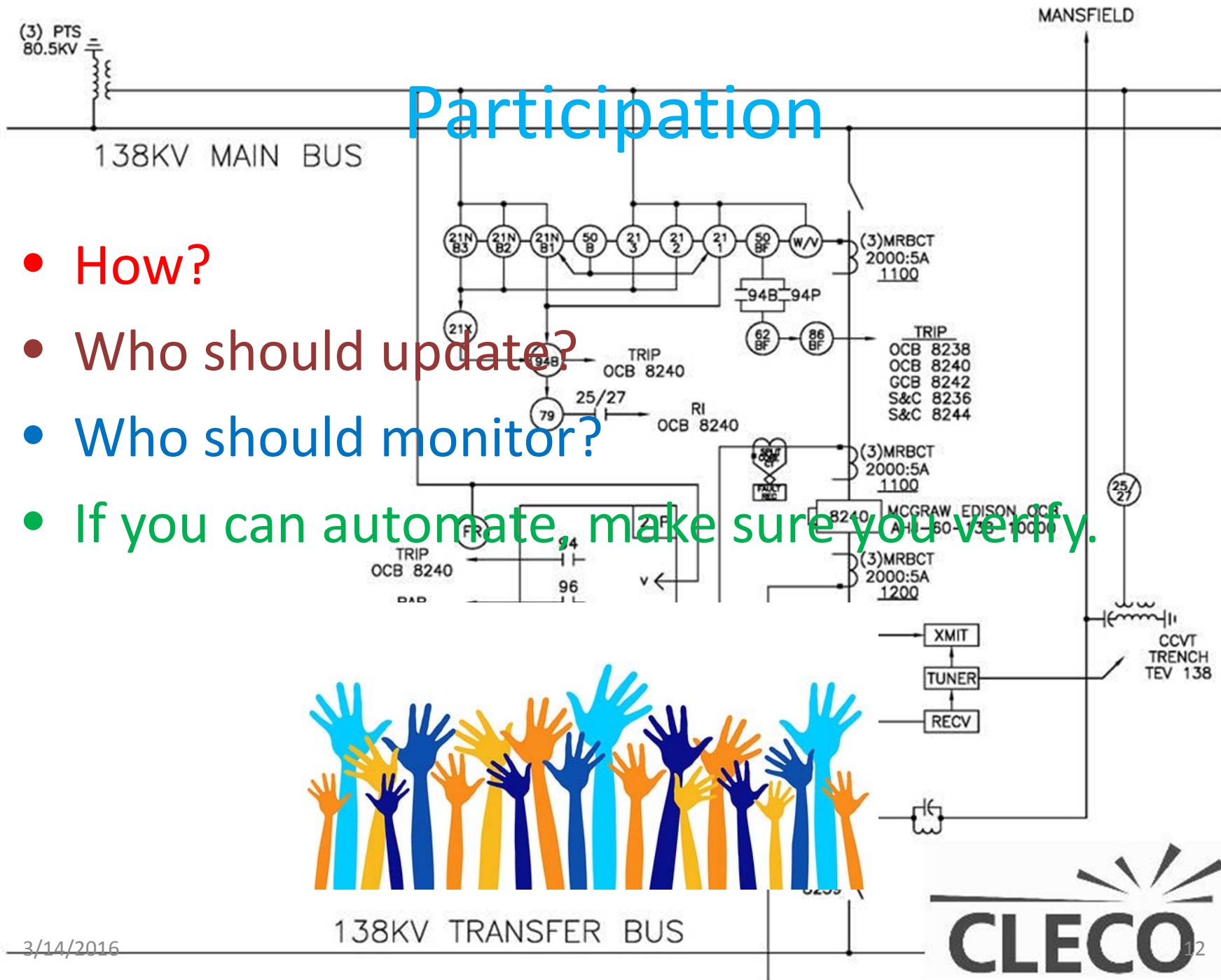
- How?
- Who should update?
- Who should monitor?
- If you can automate, make sure you verify.



Update CAP – R6

- Implement each CAP developed, and
- Update each CAP if actions or timetables change.



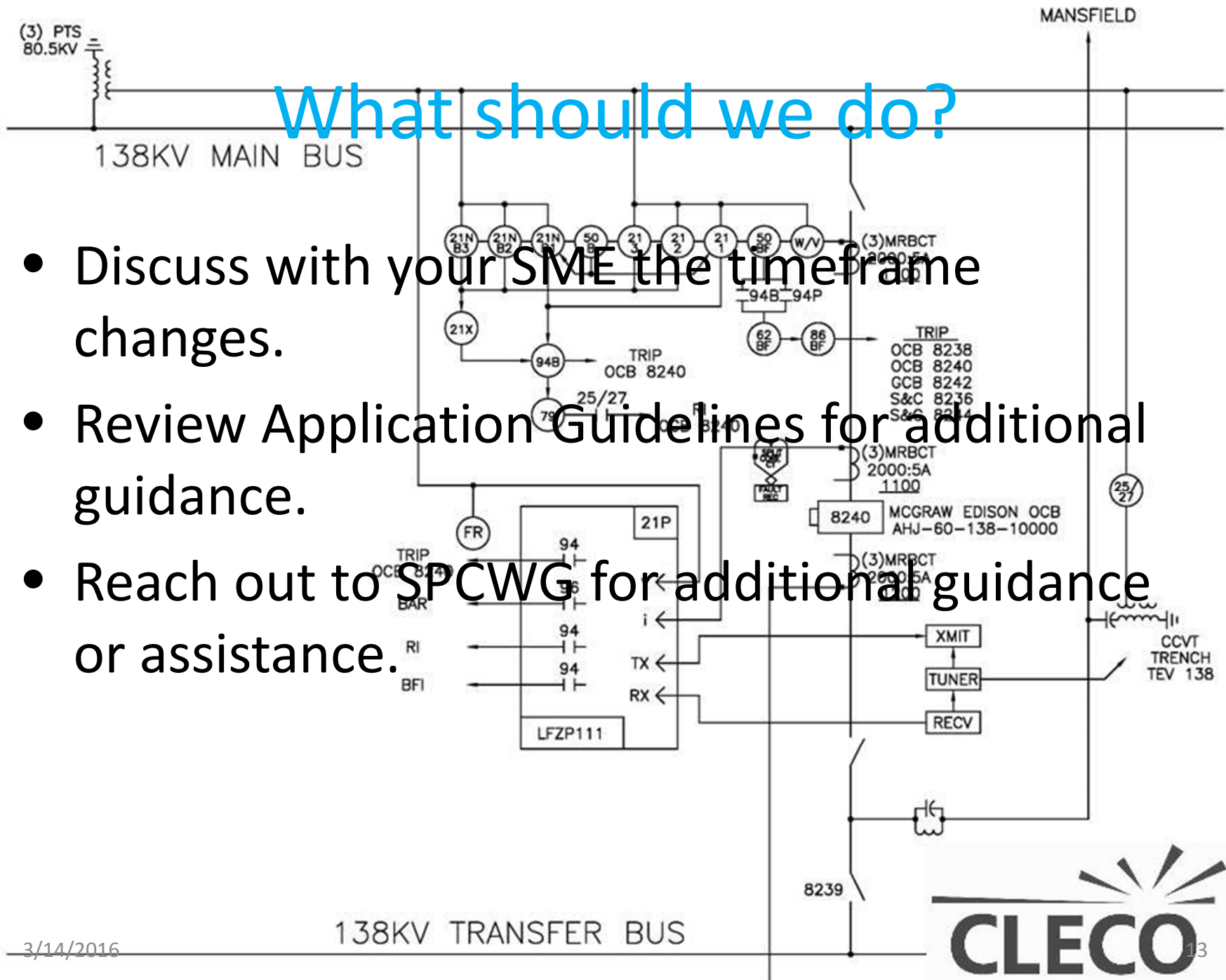


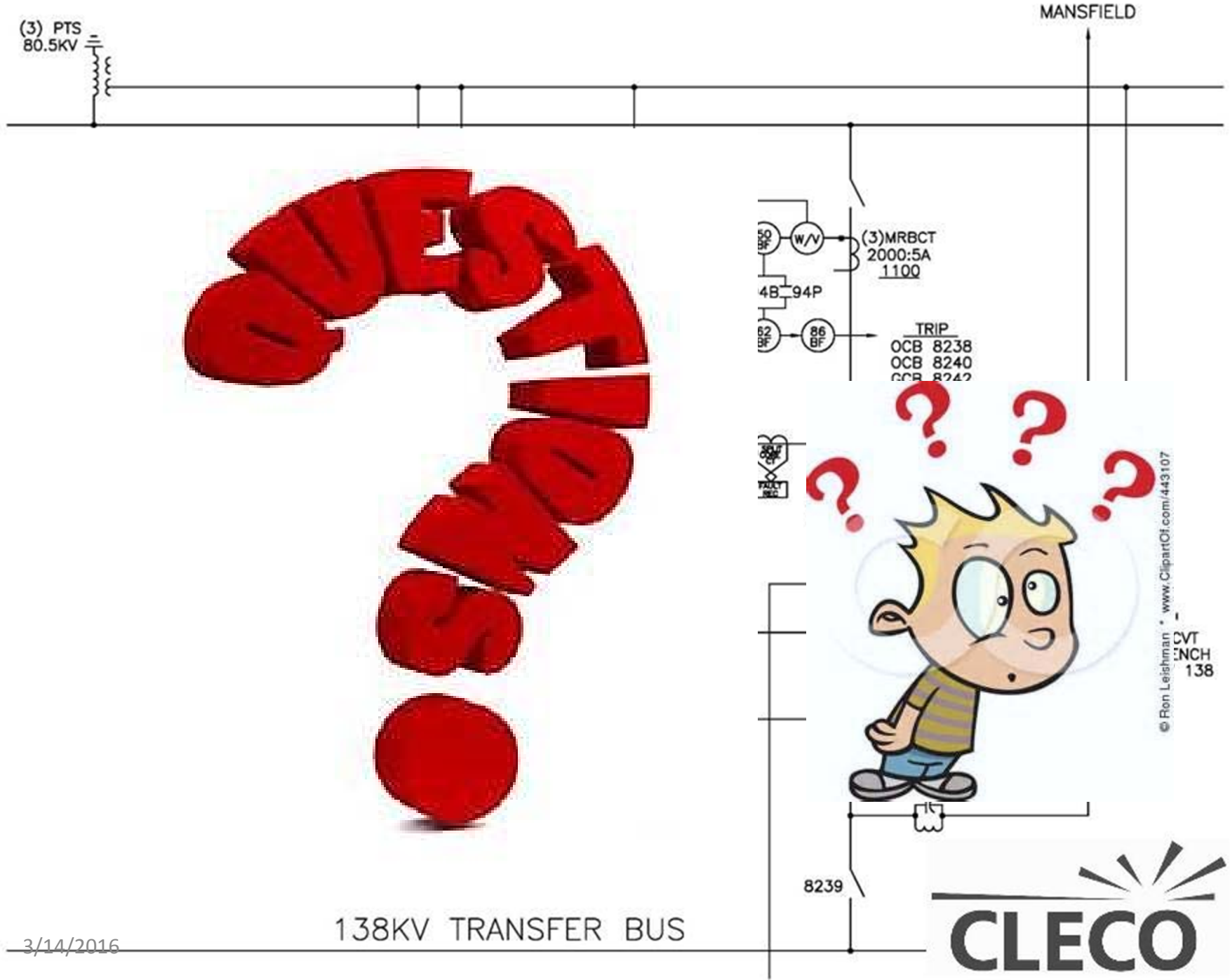
Participation

- How?
- Who should update?
- Who should monitor?
- If you can automate, make sure you verify.

What should we do?

- Discuss with your SME the timeframe changes.
- Review Application Guidelines for additional guidance.
- Reach out to SPCWG for additional guidance or assistance.



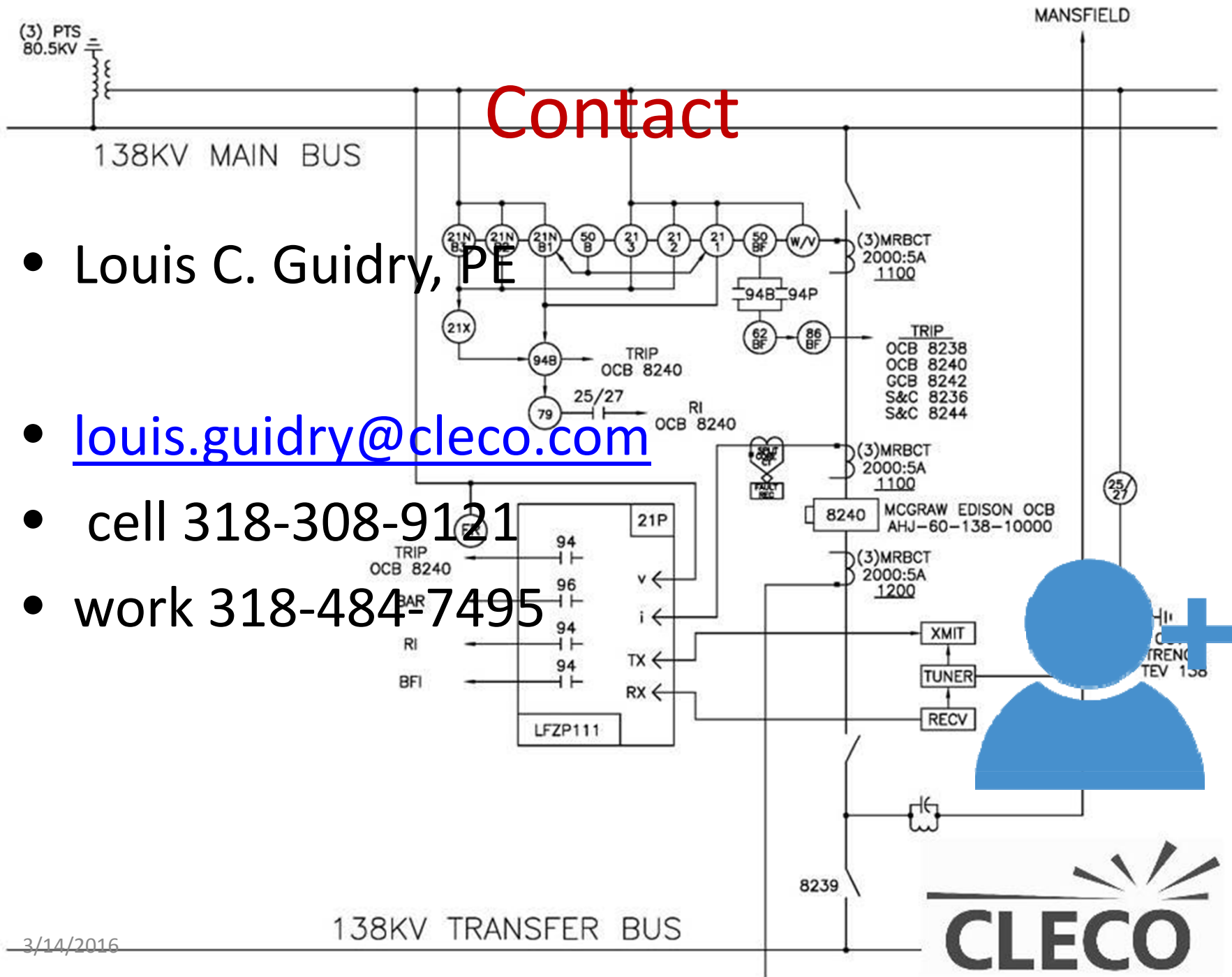


QUESTIONS

138KV TRANSFER BUS

3/14/2016





- Louis C. Guidry, PE
- louis.guidry@cleco.com
- cell 318-308-9121
- work 318-484-7495

