



# Transmission Update

Catie Dial

# Resettlement Update

- Reminder: Calendar revisions are sent out via e-mail to the *Transmission Settlements Exploder*
- Reminder: *Settlements – Transmission* distribution list has been replaced with *Settlements – Production* distribution list. The *Settlements – Transmission* distribution list will be deactivated on *July 8th, 2016*
- Resettlements planned for this month:
  - January & December 2015 PTP Resettlement (*Revised SPS Rates*)
  - NITS Resettlements – Revised files should be submitted via the Portal by **June 10<sup>th</sup>** for inclusion.  
We are currently planning for the following resettlements:
    - **January 2016**
    - **February 2016**
    - **March 2016**
    - **April 2016**
- Manual Adjustments planned for this month:
  - 30.9 MDU Adjustments impacting Zone 19 TC's
  - Resettlement of January '16 forward

# Resettlements (Planned/TBD)

## Revised SPS Rates

Operating Dates for Resettlement	Invoice Posting
March & April 2015 PTP	August 3 <sup>rd</sup> 2016
May & June 2015 PTP	September 6 <sup>th</sup> 2016
July & August 2015 PTP	October 5 <sup>th</sup> 2016

## IS Stabilization

- Potential resettlements (PTP and NITS) back to **October 2015** due to pending settlement agreements
- Schedule 11 Issues (Resident Load) back to **October 2015**
- Revised Cornbelt Rates – PTP October '15 through January '16

Operating Dates for Resettlement	Invoice Posting
October 2015 PTP & NITS	<i>Targeting October 5<sup>th</sup> 2016</i>

# Resettlements (Planned/TBD)

Westar Formula Rate Revisions due to Settlement Agreement in EL14-93

<b>Operating Dates for Resettlement</b>	<b>Invoice Posting</b>
January '16 through May'16 NITS	<i>Targeting July 6<sup>th</sup> 2016</i>
January '16 through May'16 PTP	<i>TBD</i>

---

# Release Update

- NITS on OASIS
  - *New* NITS TSRs will be created in OASIS prior to July 24<sup>th</sup> deadline
  - Settlements will not utilize the new NITS TSRs for billing until later this fall once coordination with the TOs submitting billing data has occurred
  - Updates on the timing will continue to be made via the CWG/SUG
- Schedule 11 Resident Load
  - Targeting August 2016
- Z2 Credit Stacking
  - Member Impacting Project Overview (MIPO) - <http://www.spp.org/spp-documents-filings/?id=20945>
  - Requires additional Manual Adjustment charge types
  - Targeting November 2016

# Release Update (continued)

- **New Direct Assignment Charge Types**
  - With the implementation of IS, WAPA has a need to pass through 2 new types of charges to their Western Interconnect customers
  - SPP created 2 additional charge types that TO's can utilize for passing through these imbalance charges to their customers:
    - 1. GEN\_IMBALANCE\_DIRECT\_ASSIGNMENT\_AMT
    - 2. ENERGY\_IMBALANCE\_DIRECT\_ASSIGNMENT\_AMT
  - TO's not using the new charges do not need to modify existing DA XML submissions.
  - Implementation has been pushed out due to development delays. Revised testing and production dates will be communicated at a later date.



# Marketplace Update

Catie Dial

# Resettlement Update

Operating Dates for Resettlement	Last Posting Date
R4: August 1 <sup>st</sup> 2015 – February 9 <sup>th</sup> 2016	July 25 <sup>th</sup> 2016
R8: July 31 <sup>st</sup> 2015 September 8 <sup>th</sup> , 10 <sup>th</sup> , 17-20 <sup>th</sup> , 29-30 <sup>th</sup> 2015	May 13 <sup>th</sup> 2016 July 13 <sup>th</sup> 2016
R10: December 1 <sup>st</sup> 2014 – July 31 <sup>st</sup> 2015	July 30 <sup>th</sup> 2016
R11: March 1 <sup>st</sup> 2014 – May 31 <sup>st</sup> 2014 <i>various other days June to November 2014; May 31<sup>st</sup> 2015 (yearly)</i>	November 11 <sup>th</sup> 2016

*Revisions to the calendar are sent out via the **Market Settlements Exploder***

- R4s extended through February 9<sup>th</sup> due to numerous meter disputes (30+ disputes pending resettlement)
- R8s added 8 ODs in September due to meter revisions that were not ready for processing last month; July 31<sup>st</sup> 2015 R8 scheduled to correct monthly issue in R6
- R11s added to the calendar as a result of the **Omnibus Waiver** being accepted by FERC last month



# Resettlements (TBD)

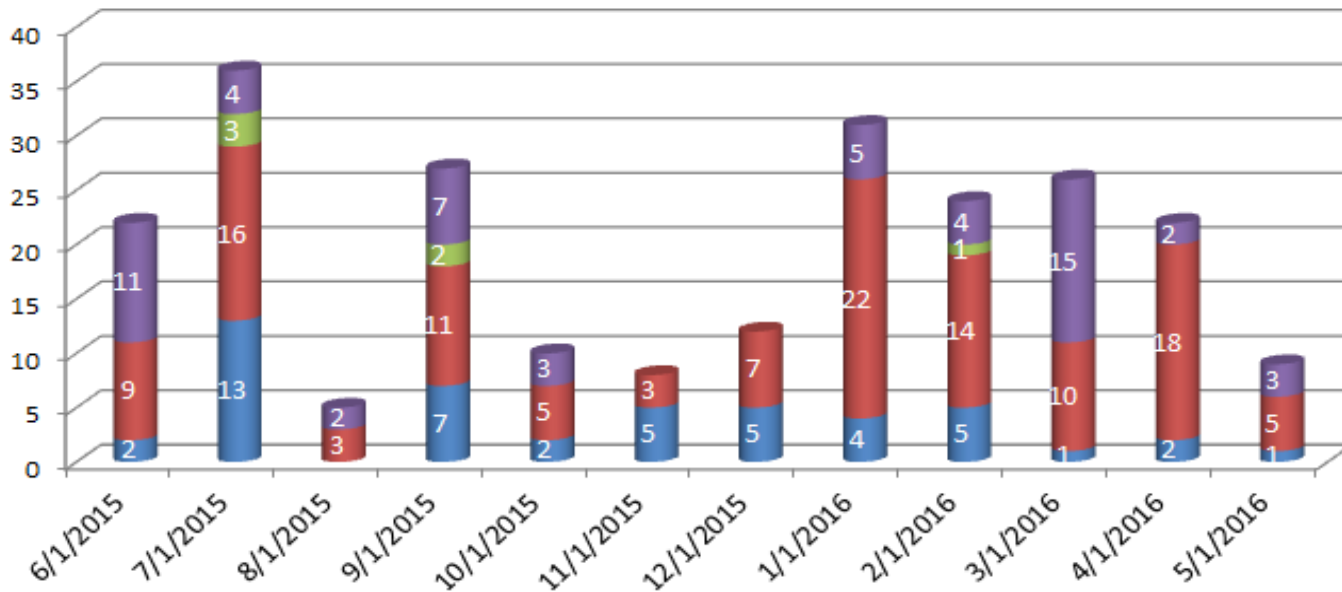
## IS Stabilization

- Potential meter revisions back to **October 2015** due to pending settlement agreements

# Dispute Metrics

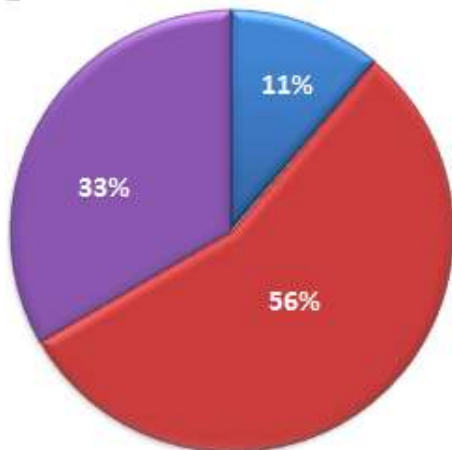
SPP Integrated Marketplace - Dispute Metrics						
Metric	Dashboard			Mar-16	Apr-16	May-16
Total # of Open Disputes <i>less pending resettlement</i> <i>(as of last day in Month)</i>	< = 30	31 to 60	> 60	15	7	17
Average Days Outstanding <i>(Granted in Month)</i>	< = 30	31 to 45	> 45	5	13	20
Average Dispute Amount <i>(Granted in Month)</i>	< = \$1.0 m	\$1.1 to \$2.0 m	> \$2.0 m	\$ 6,723.91	\$2,976.67	\$14,218.84
# of Resettlements <i>(Published in Month)</i>	< = 50	51 to 90	> 90	80	67	66

# Dispute Resolution By Status

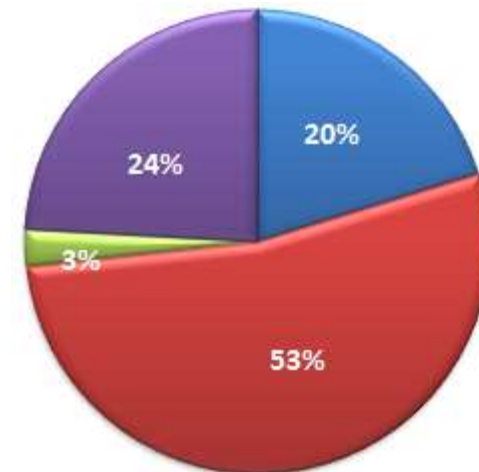


May 2016

Previous 12 Months

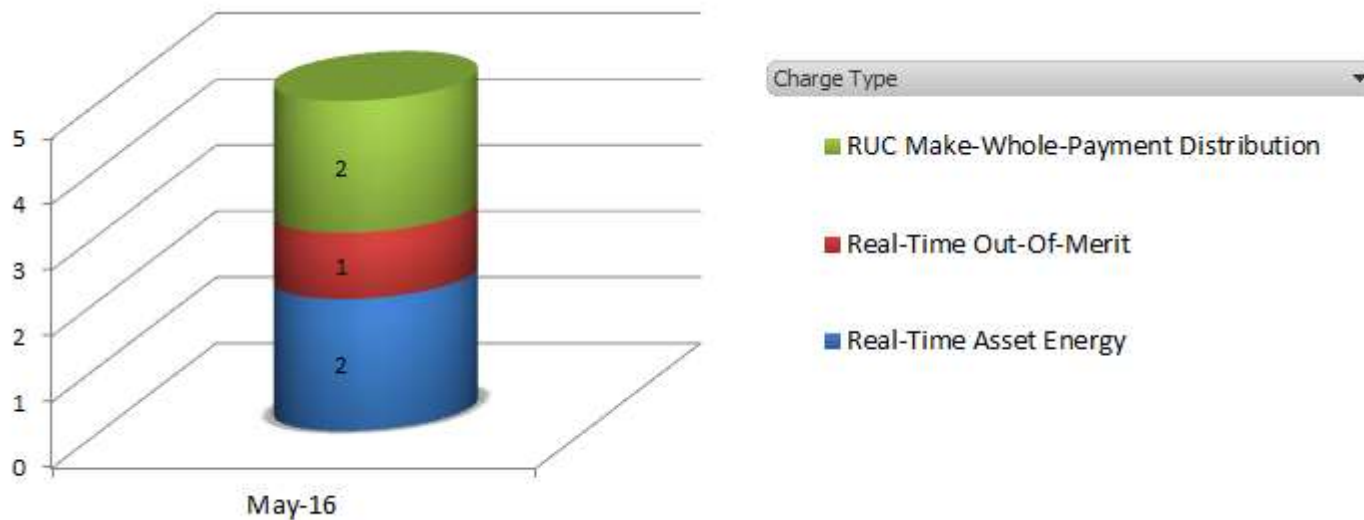


- Dispute Denied
- Dispute Granted
- Dispute Granted w/ Exceptions
- Dispute Withdrawn



# Granted Disputes by Charge Type

May 2016



# Granted Disputes by Charge Type

Previous 12 Months

