



**Helping our members work together
to keep the lights on...
today & in the future**



State of the Market

February 2007

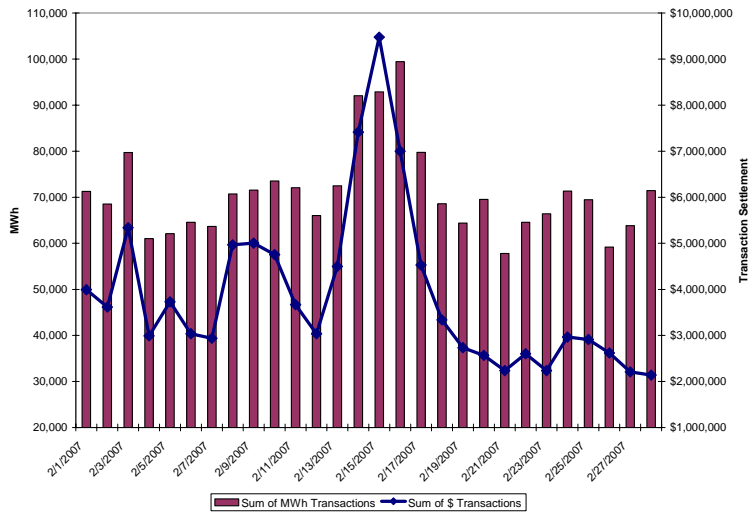
First State of the Market Report to SPP Board of Directors

- **Data is for Month of February**
- **Four Parts**
 - Observations
 - Issues
 - Boston Pacific
 - Near-Term Challenges
- **Feedback is welcomed to help all understand the market performance**

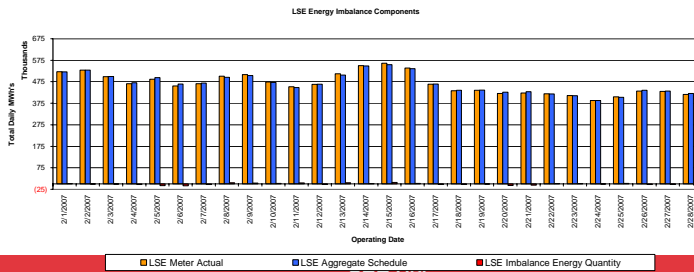
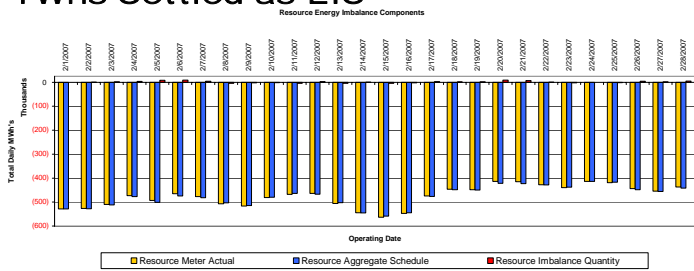


Observations

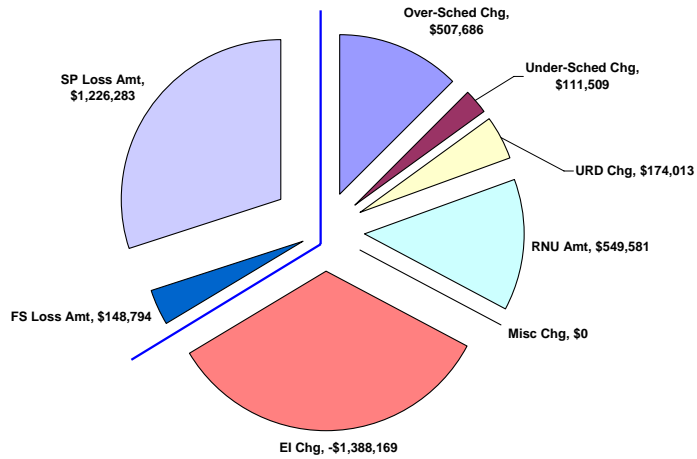
\$108.5 MM of Transactions



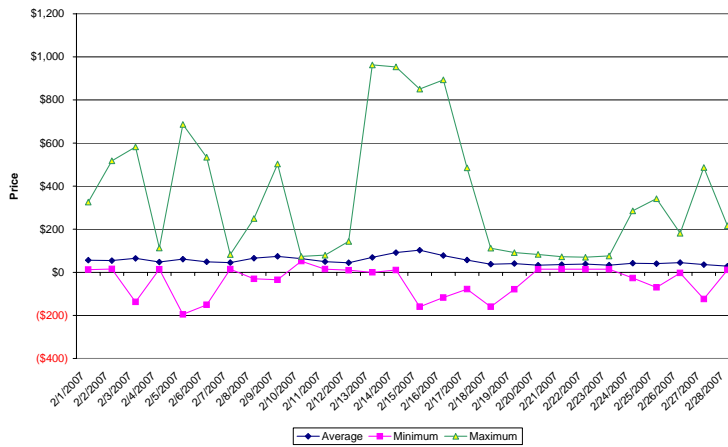
26 TWhs Represented in Market w/ 2 TWhs Settled as EIS



Net Charge Results

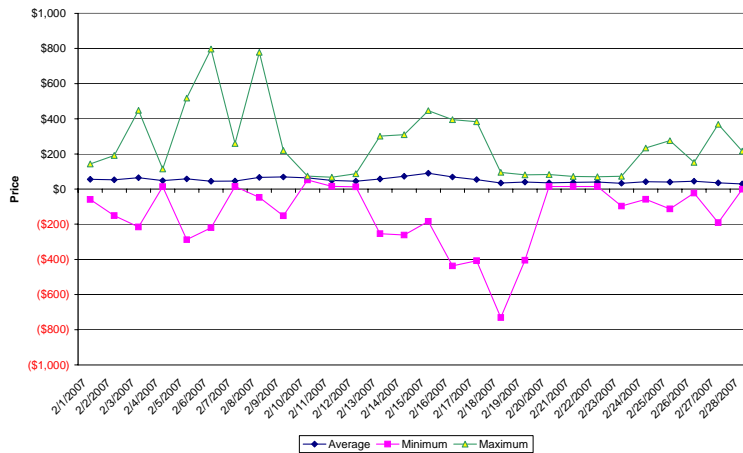


Prices Indicate Learning of SPP and MPs Daily Load Price Range



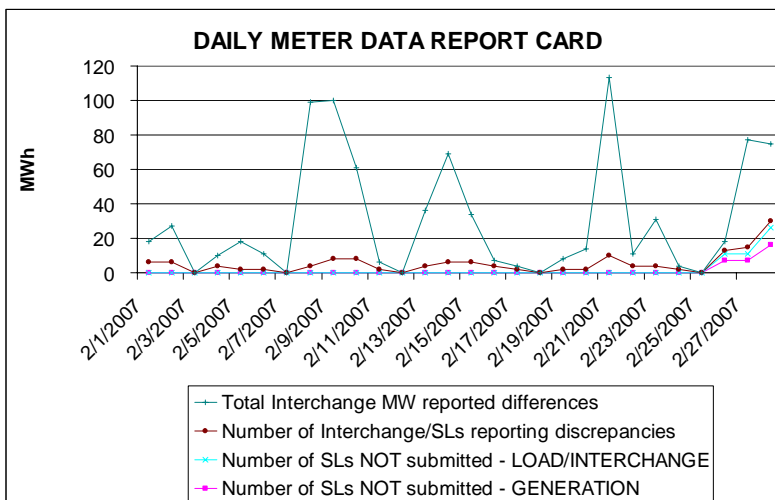
Prices Indicate Learning of SPP and MPs

Daily Generator Price Range

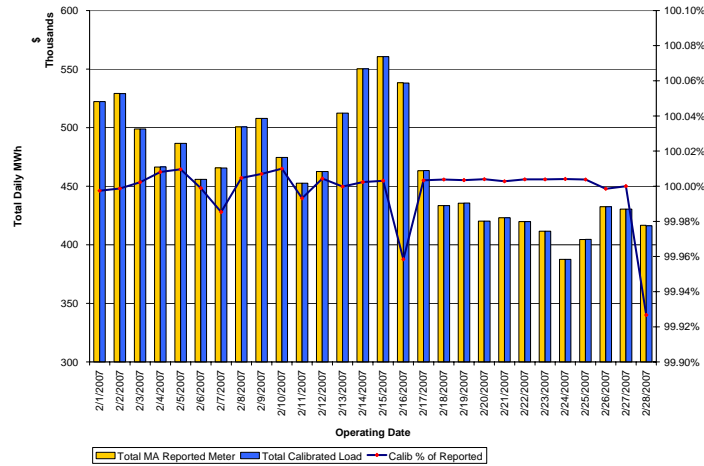


MPs Are Submitting Data

DAILY METER DATA REPORT CARD



MPs Data Shows Great Consistency



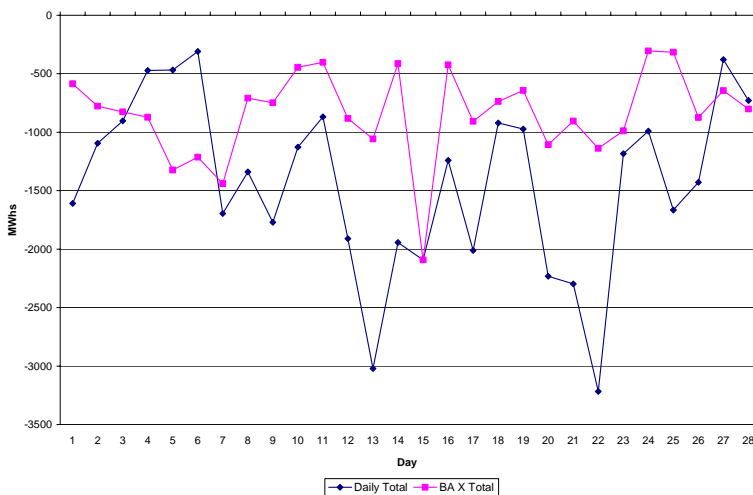
Repricing Has Been Due to Issues w/ Participant SCADA Data

Date	Hour	Average Price Change	Cause of Repricing
1-Feb	1200	\$0.78	Resource SCADA Value/Status
12-Feb	1100	\$3.99	Resource SCADA Value/Status
20-Feb	1100	\$0.16	Resource SCADA Value/Status
21-Feb	1100	(\$2.70)	Resource SCADA Value/Status
	1400	\$1.55	Resource SCADA Value/Status
	1500	(\$3.73)	Resource SCADA Value/Status

No TLR Level 5 and Estimated MWh Impacts Were Less Than 8,000

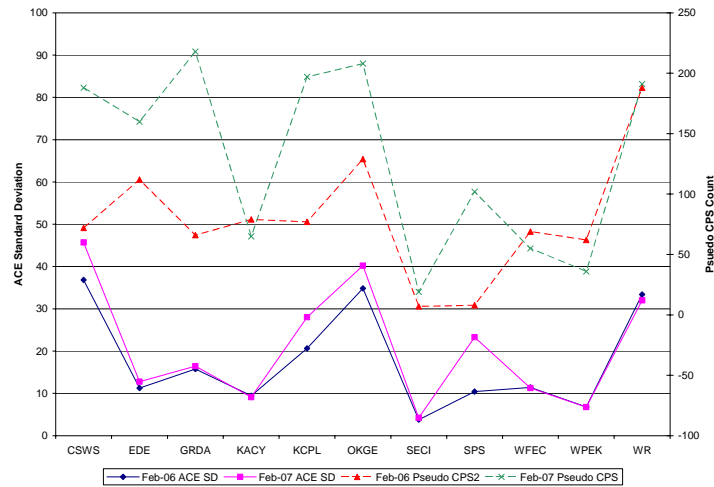
Date	Highest TLR	MWh Adj/ Curtailment	Date	Highest TLR	MWh Adj/ Curtailment
1-Feb	3B	382	15-Feb	4	7,870
2-Feb	3A	4,336	16-Feb	4	2,740
3-Feb	3B	2,691	17-Feb	3B	1,026
4-Feb	3B	369	18-Feb	3B	2,083
5-Feb	3B	1,958	19-Feb	4	4,677
6-Feb	3B	7,034	20-Feb	3A	859
7-Feb	3B	7,104	21-Feb	3B	857
8-Feb	3B	1,728	22-Feb	3B	1,054
9-Feb	3B	2,031	23-Feb	3B	1,914
10-Feb	3A	141	24-Feb	3B	4,452
11-Feb	3B	437	25-Feb	3B	4,039
12-Feb	3B	986	26-Feb	3B	4,077
13-Feb	3B	3,490	27-Feb	3B	5,951
14-Feb	4	7,273	28-Feb	3B	7,166

February 2007 Inadvertent



BA Performance vs. Historical

(SPP Total ACE SD Variance = ~3.9)



Market Systems Performed

- **No Outages to-date**
- **Portal has been responsive**
- **Production Releases**
 - **98 Releases (35 Emergency)**
 - **DST, Model Updates, DB Upgrades, Fixes**



Issues

Violation Relaxation Limit Occurrences During Feb. 2007

VRL Type	Deployment Intervals	Percent of Month	Duration (min)		Violation Amount (MW)	
			Min	Max	Min	Max
Operational Constraint	1247	15	5	*580	1	**127
Ramp Rate	105	1	5	***25	5	250
Market Balance	0	0	N/A	N/A	N/A	N/A
Resource Capacity	0	0	N/A	N/A	N/A	N/A

* Temporary 4 (Flintcreek) on February 14

** SPSNorth on February 3

*** February 5 at 0630

Flint Creek Was the Majority of OC Violations Out of 18 Flowgates

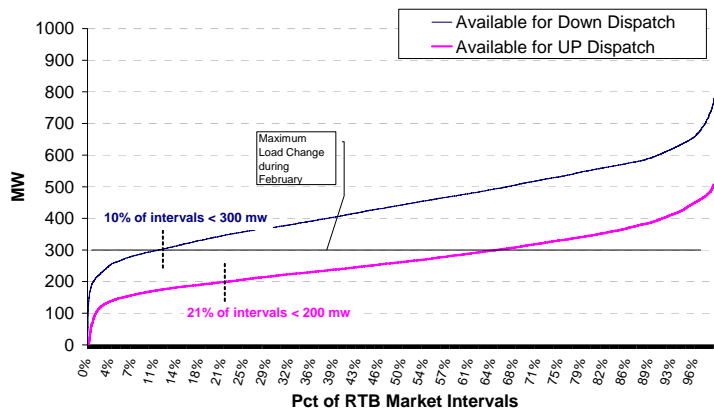
Flowgate (Monitored Element)	Balancing Authority	Count of Congested Intervals	Count of Binding Intervals	Count of Violated Intervals
SPP to SPS Ties	SPP-SPS	1,812	1,801	11
Flint Creek to Tontitton	CSWS	824	132	692
Stilwell to Peculiar*	KCPL	705	439	266
Flint Creek to Tontitton*	CSWS	670	56	614
SPS north to SPS south	SPS	459	453	6
Atlas Junction to Carthage	EDE	399	363	36
Valliant Xfr circuit 2	CSWS	231	120	111
Judson to Greensburg	WPEK	211	139	72
Wilburt to Libonia	EES-SPP	95	9	86
Broken Bow to Clayton	CSWS	47	37	10
Pecan Xfr	OKGE	40	40	0
HugoPP4 to Valliant	CSWS	16	14	2
Overton to Sibley	MISO-MPS	13	8	5
S.Coffeyville to Dearing	CSWS-WR	9	8	1
Bartlesville,S to Bartlesville.N	CSWS	8	8	0
Cresswell to Kildare	WR-OKGE	7	7	0
Okmulgee to EC.Henryetta	CSWS-OKGE	2	2	0
NW.Texarkana to Patterson	CSWS	2	2	0
Total		5,550	3,638	1,912

Notes
* Indicates temporary flowgates



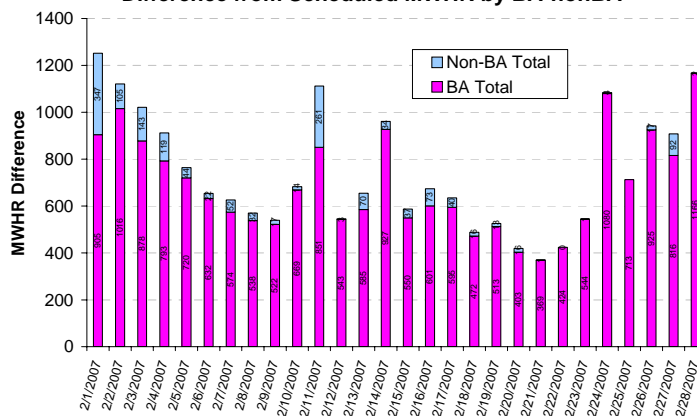
Available Ramp Submitted is Inadequate at Times (1.5% Ramp Rate Violations)

Available Ramp for Market Dispatch in February 2007
Duration Curve Format



Submitted Self-Scheduled Resources Ramp Rates Burden the EIS Market and the Regulating Units

Self-Scheduled Resource Shadow Dispatch
Difference from Scheduled MWhr by BA-nonBA

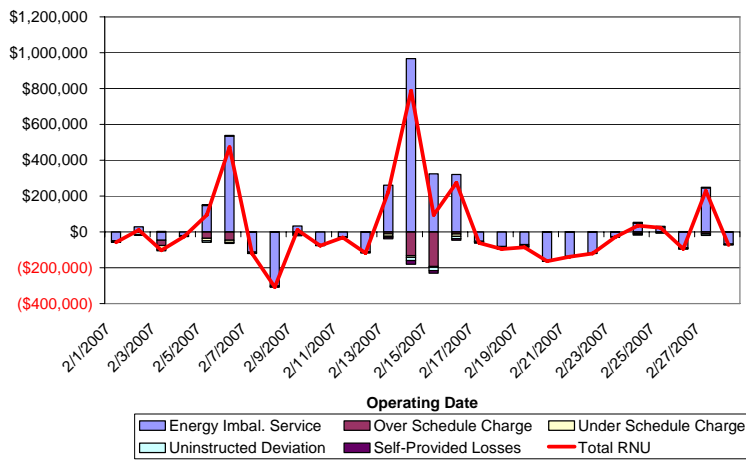


Revenue Neutrality Uplift

Total RNU Has Fluctuated Significantly During the First Month

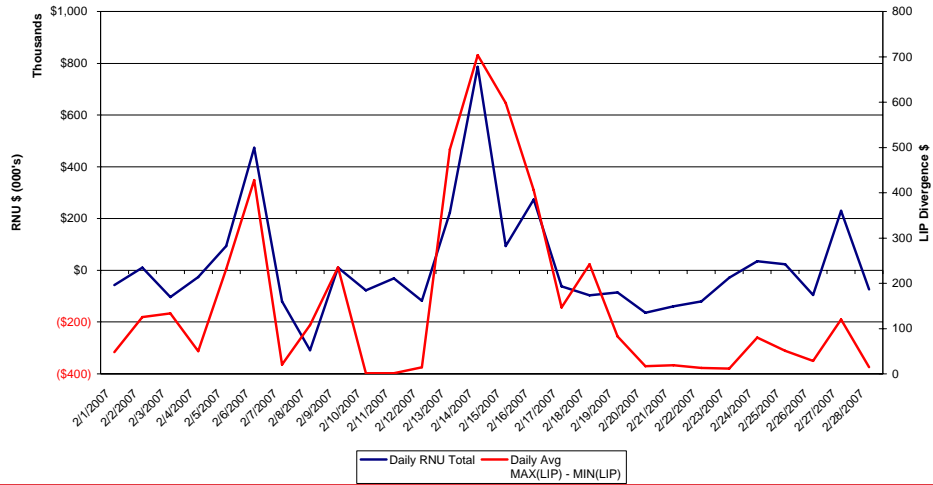
- February 2007 -

RNU Components and Total RNU



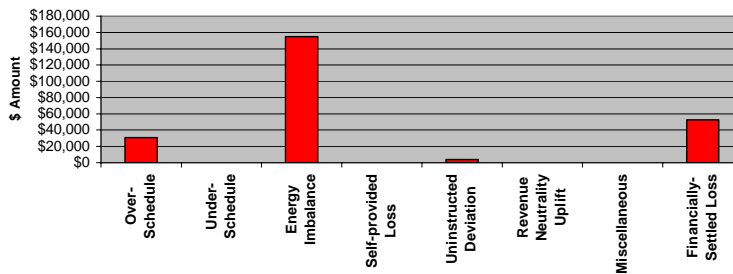
RNU Potential Increases With Price Spread

Avg LIP Divergence vs Total RNU



Disputes

Opened \$ Amount per Charge Type



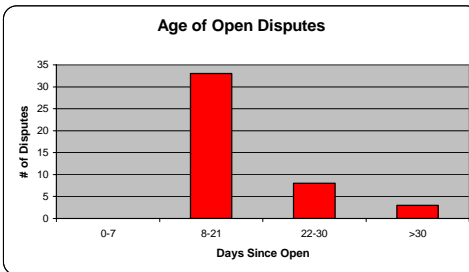
Top 3 Charge Types by \$ (Aggregate)

Charge Type	#Opened	Total \$	Avg \$ Opened
Energy Imbalance	24	\$154,686	\$6,445
Financially-Settled Loss	26	\$52,769	\$2,030
Over-Schedule	7	\$30,746	\$4,392

As of March 8

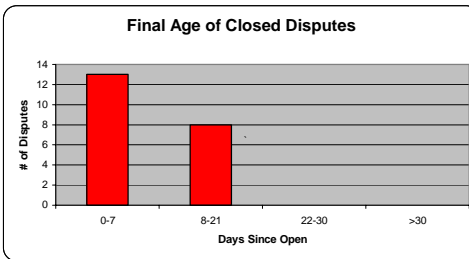
Age of Open Disputes

Open (# Days)	Disputes
0-7	28
8-21	14
>30	0



Final Age of Closed Disputes

Open (# Days)	Disputes
0-7	13
8-21	8
>30	0



Near-Term Challenges

- **April 1 – Consolidation of Sunflower and West Plains Kansas**
- **External Generation participation in the EIS Market**
- **Demand Response participation in the EIS Market**
- **Redispatch for Firm Transmission Service**



Carl A. Monroe
Sr. VP, Ops & COO
501-614-3218
cmonroe@spp.org

FEBRUARY 2007

MONTHLY METRICS REPORT
FOR THE SOUTHWEST POWER POOL (SPP)
ENERGY IMBALANCE SERVICES (EIS) MARKET

Prepared by:

The SPP Market Monitoring Unit and
Boston Pacific Company, Inc.

March ____ 2007

LIST OF TABLES AND FIGURES

EXECUTIVE SUMMARY

I. MARKET ACTIVITY

Table One: Electricity Sales in the EIS Market by Day and for the Month

Table Two: Electricity Purchases in the EIS Market by Day and for the Month

II. PRICES

Table Three: Rough Comparison of SPP-Wide, MISO-Wide, and ERCOT-Wide Hourly Price Statistics

Figure One: Price Duration Curve for the EIS Market

Figure Two: Average Price to Load by Load Settlement Location

Table Four: Monthly Flagged Interval Prices Beyond Thresholds

Figure Three: Path of Daily Henry Hub Natural Gas Prices Compared to SPP On-Peak Daily Average

III. PARTICIPATION

Table Five: Percent of Total Capacity Made Available to the EIS Market by Day and for the Month

Figure Four: Capacity Made Available Compared to Load in the SPP Footprint

Table Six: Dispatchable Range of Capacity Made Available to the EIS Market by Day and for the Month

IV. TRANSMISSION CONGESTION

Table Seven: Price Divergence as a Rough Indicator of Transmission Congestion

Table Eight: Transmission Congestion Summary by Flowgate for the Month

APPENDICES

Table A: Average Prices by Day for Load Settlement Locations and SPP-Wide

Table B: Average Prices by Hour for Load Settlement Locations and SPP-Wide

DISCLAIMER

The data and analysis in this report are provided for informational purposes only and shall not be considered or relied upon as market advice or market settlement data. The SPP RTO, the SPP MMU, and Boston Pacific Company, Inc. (collectively the “Authors”) make no representations or warranties of any kind, express or implied, with respect to the accuracy or adequacy of the information contained herein. The Authors shall have no liability to recipients of this information or third parties for the consequences arising from errors or discrepancies in this information, for recipients’ or third parties’ reliance upon such information, or for any claim, loss or damage of any kind or nature whatsoever arising out of or in connection with (i) the deficiency or inadequacy of this information for any purpose, whether or not known or disclosed to the authors, (ii) any error or discrepancy in this information, (iii) the use of this information, or (iv) any loss of business or other consequential loss or damage whether or not resulting from any of the foregoing.

EXECUTIVE SUMMARY

INTRODUCTION

- The SPP Energy Imbalance Services (EIS) Market started on February 1, 2007 and has now completed its first full month of operation.
- This is the first Monthly Metric Report prepared by the SPP Market Monitoring Unit (MMU) and Boston Pacific Company, Inc. (as the External Market Advisor)
- As such, this Report is a work in progress and it will evolve as further market experience is gained. As this point, the Report provides only a snapshot of the first month of the EIS Market.
- Based on this snapshot, we consider February 2007 to be a successful first month for the SPP EIS Market. Our broad view of this first month can be summarized as follows:
 - The level of EIS Market Activity can be considered a good start in both dollars and MWh.
 - Market Prices were generally in line with mature, neighboring real-time markets.
 - Prices are volatile (significantly so), but, again, volatility is in line with that in mature, neighboring markets.
 - Participation, which is voluntary, was robust.
 - Transmission congestion is pervasive in the sense it affects prices in most hours. However, the bottlenecks which cause the congestion are relatively few in number.

MARKET ACTIVITY

- As is the nature of an imbalance market, a *sale* is made by a Market Participant when either (a) it generates more than it has scheduled and/or (b) its actual load is less than it has scheduled. Similarly, a *purchase* is made by a Market Participant when either (a) it generates less than it has scheduled and/or (b) its actual load is more than it has scheduled.¹

¹ For example, say a Market Participant schedules and offers 100 MWh of generation from a power plant; by scheduling and offering, this power plant becomes dispatchable by the EIS Market. If the power plant is dispatched at 125 MWh, it made a 25 MWh sale to the EIS Market. In contrast, if it is dispatched at 70 MWh, it made a 30 MWh purchase from the EIS Market. If a Market Participant schedules 100 MWh of use (load), but actually uses 125 MWh, it has purchased 25 MWh; if its actual use is only 70 MWh, it sold 30 MWh to the EIS Market.

- For the month of February 2007, 982,439 MWh were sold in the EIS Market for a total of \$55.0 million.
- About 1,005,583 MWh were purchased in the month for a total of \$53.6 million.
- To put these MWh purchases and sales in context, note that we estimate a total of about 13 million MWh were used (total load) in the SPP footprint in February 2007. EIS Market sales (at 982,439 MWh) were equal to 7.5% of total load in SPP.²

PRICES

- The SPP-wide, weighted average hourly price to consumers (at load) for February 2007 was \$58.98/MWh in the EIS Market.
- These SPP-wide hourly prices ranged from a low \$12.15/MWh to a high \$202.06/MWh. The median price was \$54.53/MWh. (The median means half the prices were above this level and half below.)
- The SPP-wide weighted average hourly on-peak price was \$68.22/MWh and, for off-peak, the average hourly price was \$49.50/MWh.
- Volatility of SPP-wide hourly prices was significant, as indicated by a Coefficient of Variation of 54%. (This means that the SPP-wide price in any given hour differed, on average, from the monthly average by 54%.)
- Only rough comparisons can be made to other energy imbalance markets because of differences in market structure and current data limitations. As to average monthly price, the SPP weighted average price of \$58.98/MWh (a) fell below the MISO simple average price of \$62.67/MWh and (b) was above the ERCOT simple average of \$52.66/MWh. Volatility was about the same in the SPP, MISO, and ERCOT markets with the Coefficient of Variation at 54%, 58%, and 53%, respectively.
- In addition to the analysis of SPP-wide hourly prices for load, we also assessed prices at 5-minute deployment intervals for both load and generation settlement locations. These are the most granular price data and they can be summarized as follows:
 - 94% were in the zero to \$100/MWh range

² It is important to see that we excluded the category of “First Tier Transmission Customers” from these estimates of Market Activity; SPP tells us there are no invoices for these MWh although they appear in the settlement database.

- 1.1% were negative;
 - 4.6% were in the \$100 to \$400/MWh range, and;
 - 0.3% were above \$400/MWh.
- We expect swings in natural gas prices to drive on-peak prices. However, SPP-wide EIS on-peak prices varied more widely than natural gas prices varied.

PARTICIPATION

- Participation in the EIS Market, which is voluntary, was robust in February 2007, with 77% of on-line capacity being made available to the EIS Market. (For the purposes of this Report, on-line capacity includes only Available and Self-Dispatched capacity.)
- Capacity made available to the EIS Market was consistently equal to a high percentage (about 93%) of average daily load in the SPP footprint.
- The five largest Market Participants control 73% of all generation capacity in the SPP footprint. Consistent with this (and as additional evidence of robust participation), these five accounted for 84% of all capacity made available to the EIS Market.
- For the capacity made available to the EIS Market, the dispatchable range averaged 50% which is another, more strict indication of robust participation. (Dispatchable range indicates the portion of the capacity that can be moved up and down as customer need varies.)
- The one possible concern with participation is low ramp rate; a ramp rate dictates how fast a power plant can be moved from one level of operation to the next. The average ramp rate per available resource was 2.34 MW per minute.

TRANSMISSION CONGESTION

- Prices in the EIS Market diverge by location when there is transmission congestion.
- Congestion was pervasive in time in the sense that prices at load diverged in 66% of all hours. For on-peak hours only, prices diverged in 78% of the hours. On average, prices in on-peak hours with congestion were 41% higher than in hours without congestion.
- We also wanted a sense of how many transmission facilities (flowgates) were causing the congestion in these intervals. We found that that the number of congested flowgates (“bottlenecks”) is small.

- To confirm this view that the transmission bottlenecks are few in number, we traced congestion to specific flowgates. We found that in 88% of all of the instances of congestion, the same 6 flowgates, including two temporary flowgates, were involved.

I. MARKET ACTIVITY

Table One
Electricity Sales in the EIS Market by Day
and for the Month

Day	MWh Sold by Market Participants	Dollars Received by Market Participants
2/1/2007	34,949	1,971,639
2/2/2007	34,070	1,821,259
2/3/2007	39,546	2,644,925
2/4/2007	30,620	1,485,333
2/5/2007	30,893	1,939,267
2/6/2007	32,329	1,785,757
2/7/2007	31,237	1,413,318
2/8/2007	34,706	2,332,233
2/9/2007	34,873	2,518,184
2/10/2007	36,213	2,341,242
2/11/2007	35,822	1,820,749
2/12/2007	32,339	1,462,428
2/13/2007	35,376	2,379,263
2/14/2007	45,100	4,190,633
2/15/2007	45,435	4,901,323
2/16/2007	49,774	3,660,385
2/17/2007	39,415	2,237,393
2/18/2007	34,552	1,628,092
2/19/2007	31,678	1,332,111
2/20/2007	33,774	1,201,676
2/21/2007	28,319	1,048,573
2/22/2007	31,524	1,241,816
2/23/2007	33,489	1,104,951
2/24/2007	35,846	1,506,148
2/25/2007	34,374	1,469,639
2/26/2007	28,700	1,265,879
2/27/2007	31,902	1,226,139
2/28/2007	35,583	1,034,602
Total	982,439	54,964,957

- 1) Source: SPP DSS.
- 2) A sale is made by a Market Participant when either (a) it generates more than it has scheduled and/or (b) its actual load is less than it has scheduled.

Table Two
Electricity Purchases in the EIS Market by Day
and for the Month

Day	MWh Purchased by Market Participants	Dollars Paid by Market Participants
2/1/2007	36,313	2,020,372
2/2/2007	34,440	1,793,341
2/3/2007	40,181	2,691,554
2/4/2007	30,395	1,505,408
2/5/2007	31,207	1,791,733
2/6/2007	32,231	1,251,460
2/7/2007	32,427	1,525,557
2/8/2007	36,021	2,634,330
2/9/2007	36,681	2,485,909
2/10/2007	37,321	2,414,945
2/11/2007	36,237	1,848,170
2/12/2007	33,694	1,574,100
2/13/2007	37,136	2,118,349
2/14/2007	46,960	3,223,090
2/15/2007	47,468	4,576,733
2/16/2007	49,685	3,340,457
2/17/2007	40,327	2,289,971
2/18/2007	34,040	1,709,348
2/19/2007	32,690	1,403,128
2/20/2007	35,778	1,364,416
2/21/2007	29,467	1,185,697
2/22/2007	33,027	1,359,280
2/23/2007	32,941	1,130,373
2/24/2007	35,515	1,457,618
2/25/2007	35,097	1,442,698
2/26/2007	30,481	1,354,284
2/27/2007	31,952	980,994
2/28/2007	35,869	1,103,474
Total	1,005,583	53,576,789

- 1) Source: SPP DSS.
- 2) A purchase is made by a Market Participant when either (a) it generates less than it has scheduled and/or (b) its actual load is more than it has scheduled.

II. PRICES

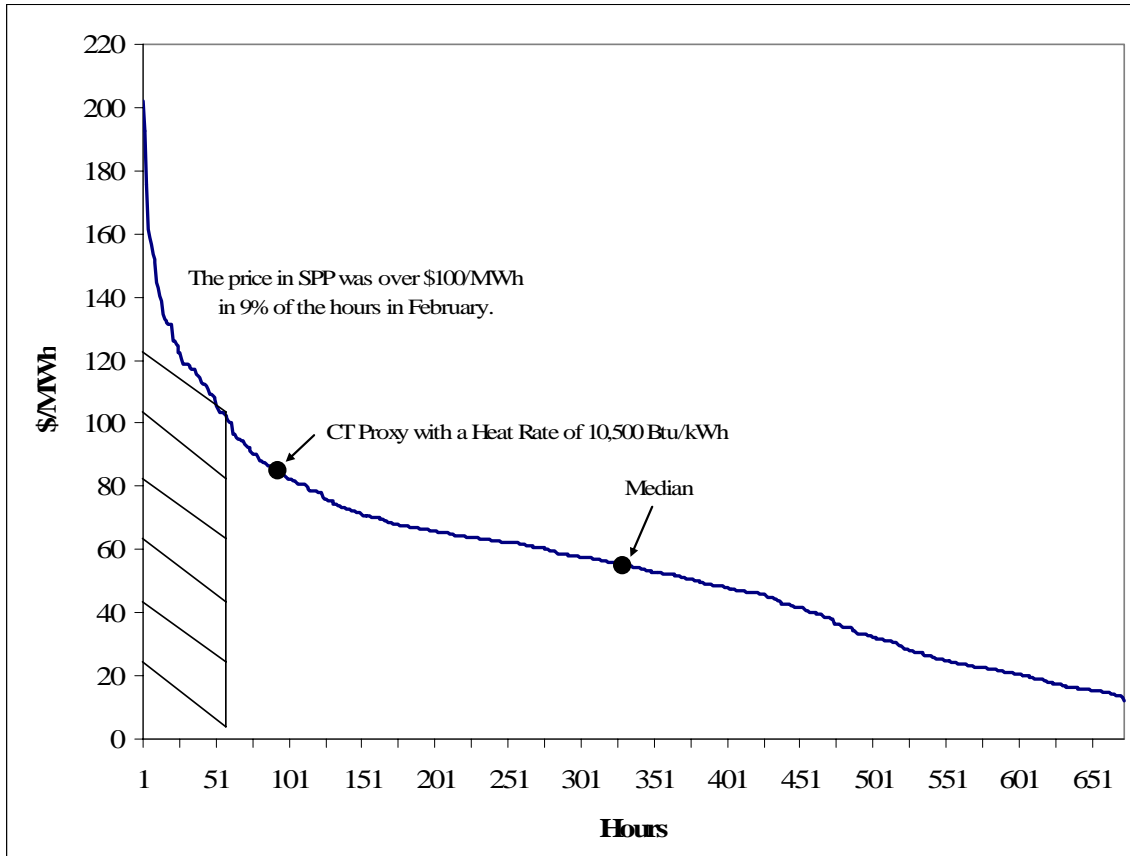
Table Three
Rough Comparison of SPP-Wide, MISO-Wide,
and ERCOT-Wide Hourly Price Statistics

Region	Average Price	Max. Price	Min. Price	Median Price	Volatility	Average On-Peak Price	Average Off-Peak Price
SPP	\$58.98	\$202.06	\$12.15	\$54.53	54%	\$68.22	\$49.50
MISO	\$62.67	\$249.52	\$6.27	\$55.52	58%	\$78.55	\$48.23
ERCOT	\$52.66	\$468.83	\$3.37	\$50.97	53%	\$57.66	\$48.11

Note: We use the term “rough comparison” because of inherent differences in the structure of the three markets. Also because of the difference in how prices for SPP, MISO, and ERCOT are calculated. For SPP prices, we used weighted averages and for MISO and ERCOT, we used simple averages.

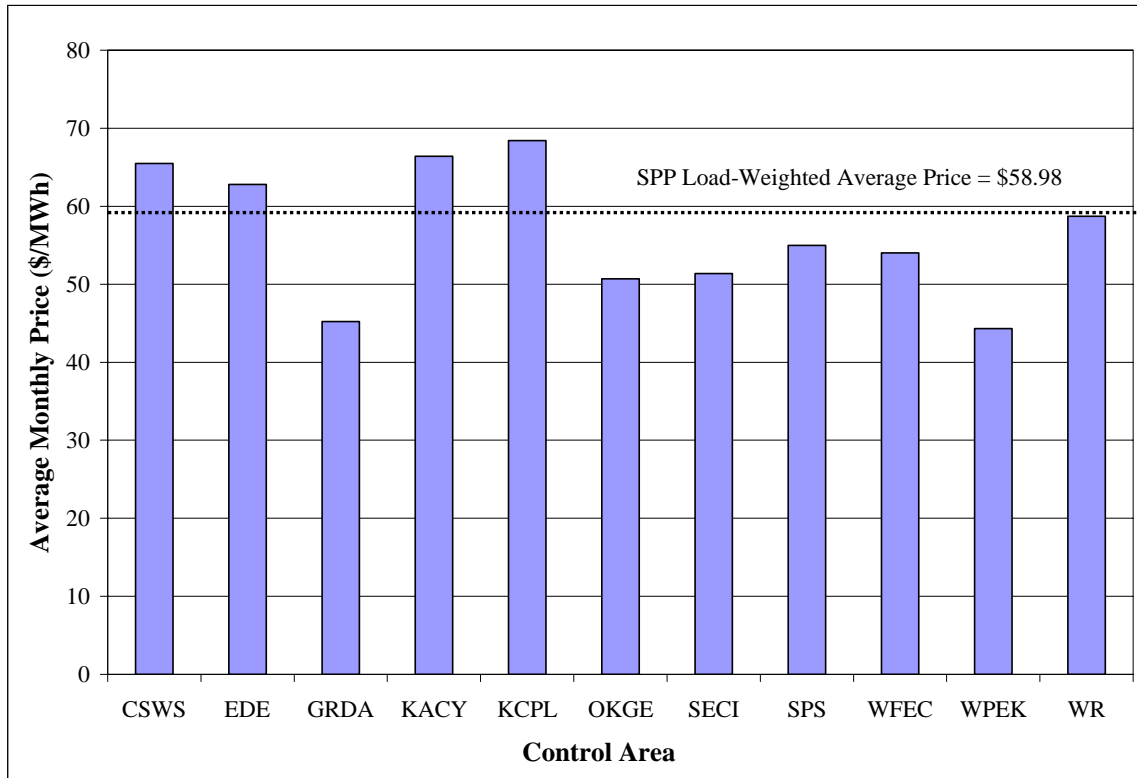
- 1) All prices are per MWh.
- 2) Note that SPP and MISO deploy on a 5-minute interval and both are nodal markets. ERCOT deploys on a 15-minute interval and is a zonal market.
- 3) For SPP, the average price is the weighted average of all hourly locational imbalance prices (LIPs) for eleven load settlement areas; weights are total hourly load in the footprint (not EIS-only load).
- 4) Because of interim data limitations, the averages for MISO and ERCOT are simple averages of hourly prices, not load weighted. Had we taken a simple average for SPP, SPP’s averages would have been lower. The average price would have been \$56.07, the average on-peak price \$65.61 and the average off-peak price \$47.40.
- 5) The maximum, minimum, and median prices are taken across all hours in the month.
- 6) Volatility is measured by Coefficient of Variation, which is the standard deviation across all hours divided by the simple average of hourly prices.
- 7) On-peak hours include hour-ending 7:00 am to hour-ending 10:00 pm. Off-peak hours are hour-ending 11:00 pm to hour-ending 6:00 am. Weekends and NERC holidays are also off-peak.
- 8) The SPP data is from the Market Operating System.
- 9) MISO data is publicly available at http://www.midwestiso.org/publish/Folder/10b1ff_101f945f78e_-75e70a48324a.
- 10) ERCOT data is publicly available at <http://www.ercot.com/mktinfo/services/bal/index.html>

Figure One
Price Duration Curve for the EIS Market



- 1) A price duration curve represents all hourly prices in descending order plotted against the hours that price level prevailed. It is not chronological.
- 2) The median price is \$54.30/MWh.
- 3) The CT Proxy reflects the average variable cost of operating a Combustion Turbine with a heat rate of 10,500 Btu/kWh and average trading day Henry Hub gas prices. The average is \$84.00/MWh – the SPP-wide price was above this level in 96 hours in February.

Figure Two
Average Price to Load by Load Settlement Location



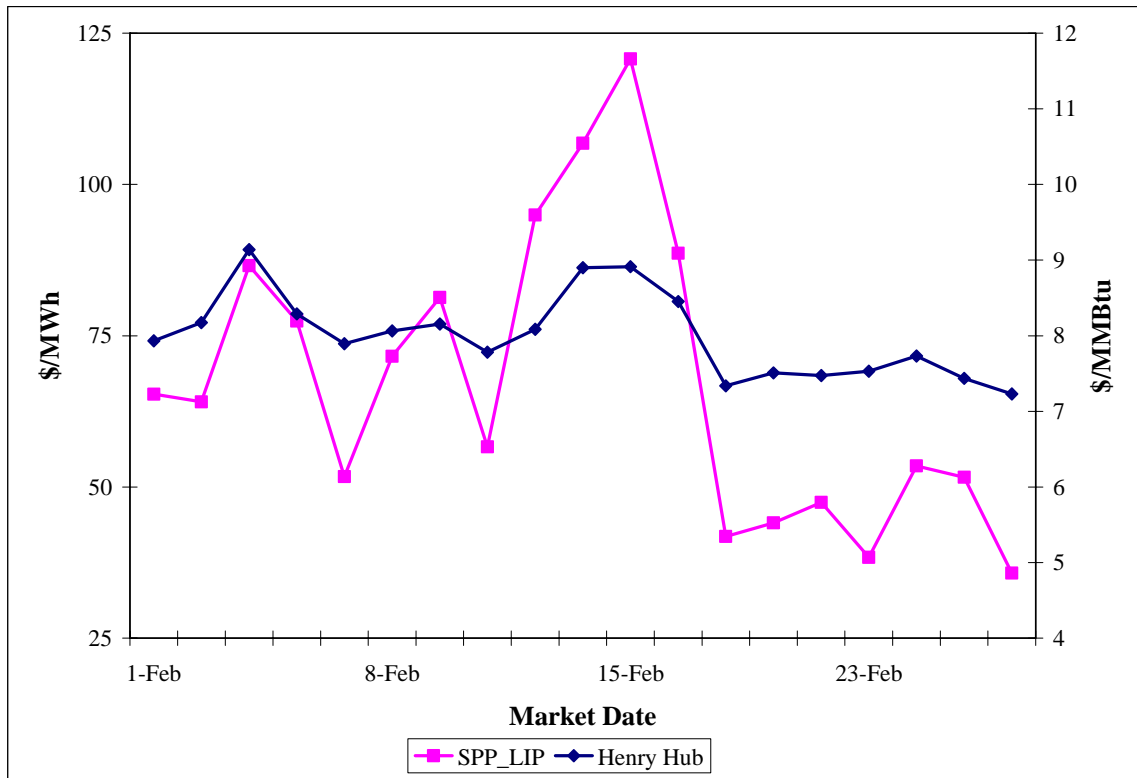
- 1) The price is the weighted average of all locational imbalance prices (LIPs) for the eleven load settlement areas, weighted by the total hourly load in the settlement area (not EIS-only load).

Table Four
Monthly Flagged Interval Prices Beyond Thresholds

Day	Less Than \$0		Between \$0 and \$100		Between \$100 and \$400		Greater Than \$400	
	Count	% of all observations	Count	% of all observations	Count	% of all observations	Count	% of all observations
2/1/2007	45	0.1%	81,486	99.6%	248	0.3%	13	0.0%
2/2/2007	460	0.6%	78,784	96.3%	2,490	3.0%	58	0.1%
2/3/2007	1,088	1.3%	77,283	94.5%	2,949	3.6%	472	0.6%
2/4/2007	2	0.0%	80,084	97.9%	1,706	2.1%	0	0.0%
2/5/2007	3,188	3.9%	70,474	86.2%	7,055	8.6%	1,075	1.3%
2/6/2007	4,780	5.8%	71,230	87.1%	4,874	6.0%	908	1.1%
2/7/2007	44	0.1%	81,137	99.2%	604	0.7%	7	0.0%
2/8/2007	397	0.5%	75,942	92.9%	5,358	6.6%	95	0.1%
2/9/2007	359	0.4%	75,575	92.4%	5,753	7.0%	105	0.1%
2/10/2007	0	0.0%	79,479	97.2%	2,313	2.8%	0	0.0%
2/11/2007	0	0.0%	81,506	99.7%	286	0.4%	0	0.0%
2/12/2007	10	0.0%	79,770	97.5%	2,010	2.5%	2	0.0%
2/13/2007	936	1.1%	74,050	90.5%	6,576	8.0%	230	0.3%
2/14/2007	1,307	1.6%	68,808	84.1%	11,406	14.0%	271	0.3%
2/15/2007	2,835	3.5%	60,121	73.5%	16,755	20.5%	2,081	2.5%
2/16/2007	2,058	2.5%	68,345	83.6%	10,808	13.2%	581	0.7%
2/17/2007	1,177	1.4%	76,690	93.8%	3,693	4.5%	232	0.3%
2/18/2007	2,588	3.2%	77,118	94.3%	2,086	2.6%	0	0.0%
2/19/2007	930	1.1%	80,040	97.9%	822	1.0%	0	0.0%
2/20/2007	0	0.0%	80,656	98.6%	1,136	1.4%	0	0.0%
2/21/2007	0	0.0%	79,804	97.6%	1,988	2.4%	0	0.0%
2/22/2007	1	0.0%	80,655	98.6%	1,136	1.4%	0	0.0%
2/23/2007	22	0.0%	80,200	98.1%	1,570	1.9%	0	0.0%
2/24/2007	916	1.1%	77,678	95.0%	3,044	3.7%	154	0.2%
2/25/2007	592	0.7%	79,768	97.5%	1,314	1.6%	118	0.1%
2/26/2007	315	0.4%	79,571	97.3%	1,852	2.3%	54	0.1%
2/27/2007	1,753	2.1%	76,082	93.0%	3,698	4.5%	259	0.3%
2/28/2007	59	0.1%	81,315	99.4%	350	0.4%	68	0.1%
Total	25,862	1.1%	2,153,651	94.0%	103,880	4.6%	6,783	0.3%

- 1) All prices are per MWh.
- 2) Counts are computed as the number of dispatch interval LIPs within a certain threshold anytime in a day for all settlement locations.
- 3) Percentage (%) of all observations is computed as the count of dispatch interval LIPs within a certain threshold divided by the total number of dispatch interval LIPs in a day for all settlement locations.

Figure Three
 Path of Daily Henry Hub Natural Gas Prices
 Compared to SPP On-Peak Daily Average



- 1) SPP On-Peak Daily Average LIPs represent the load-weighted average for all on-peak LIPs for each day.

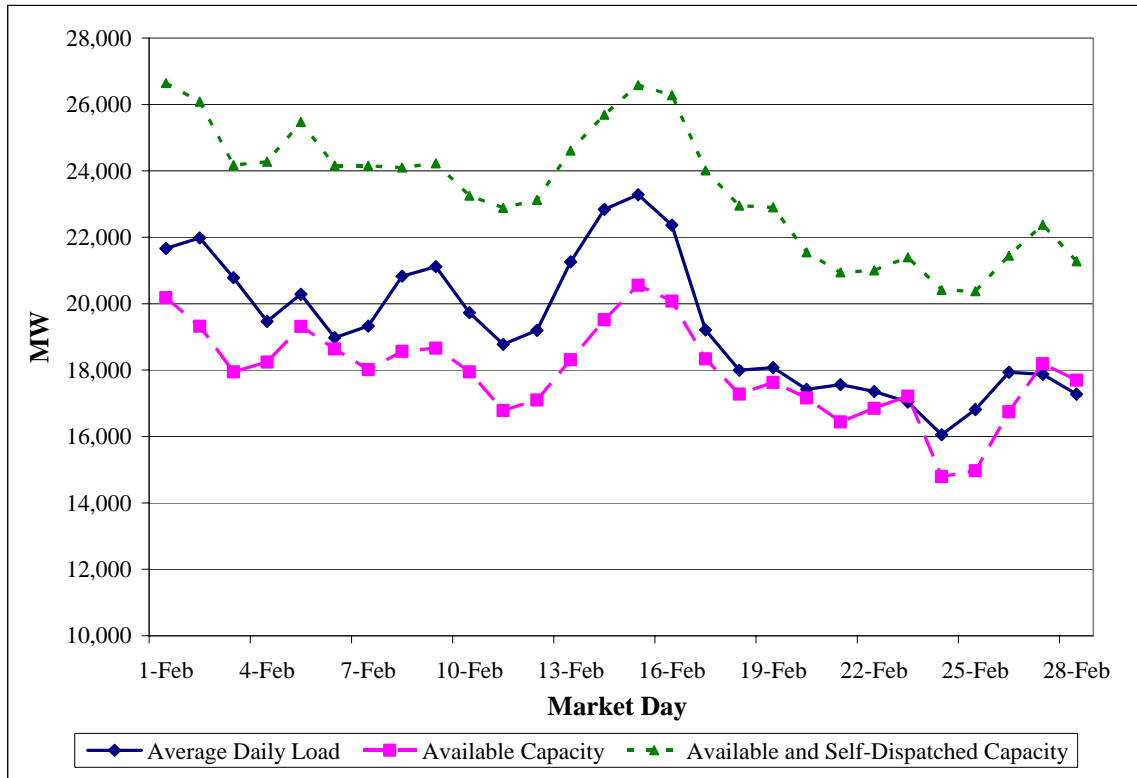
III.PARTICIPATION

Table Five
Percent of Total Capacity Made Available
to the EIS Market by Day and for the Month

Day	Available Capacity	Available and Self-Dispatch Capacity	SPP-Wide Availability
2/1/2007	20,184	26,645	76%
2/2/2007	19,319	26,085	74%
2/3/2007	17,946	24,181	74%
2/4/2007	18,241	24,279	75%
2/5/2007	19,317	25,474	76%
2/6/2007	18,636	24,159	77%
2/7/2007	18,014	24,157	75%
2/8/2007	18,561	24,098	77%
2/9/2007	18,661	24,230	77%
2/10/2007	17,947	23,251	77%
2/11/2007	16,781	22,886	73%
2/12/2007	17,099	23,127	74%
2/13/2007	18,311	24,615	74%
2/14/2007	19,513	25,693	76%
2/15/2007	20,553	26,582	77%
2/16/2007	20,078	26,278	76%
2/17/2007	18,338	24,011	76%
2/18/2007	17,274	22,950	75%
2/19/2007	17,628	22,904	77%
2/20/2007	17,162	21,547	80%
2/21/2007	16,441	20,943	79%
2/22/2007	16,847	21,006	80%
2/23/2007	17,216	21,397	80%
2/24/2007	14,789	20,414	72%
2/25/2007	14,969	20,376	73%
2/26/2007	16,745	21,445	78%
2/27/2007	18,193	22,377	81%
2/28/2007	17,696	21,280	83%
Average	17,945	23,443	77%

- 1) Available Capacity represents the sum of the Resource-Plan maximum for all Available generating units.
- 2) Available and Self-Dispatch Capacity represents the sum of the Resource-Plan maximum for all Available and Self-Dispatched generating units.
- 3) SPP-Wide Availability is the second column divided by the third.
- 4) Resources are not included if their status is Manual, Supplemental, or Unavailable.

Figure Four
Capacity Made Available
Compared to Load in the SPP Footprint



- 1) Average Daily Load is the average of the 24 hourly SPP load values for each day.
- 2) Available Capacity represents the sum of the Resource-Plan maximum for all Available generating units.
- 3) Available and Self-Dispatch Capacity represents the sum of the Resource-Plan maximum for all Available and Self-Dispatched generating units.

Table Six
 Dispatchable Range of Capacity Made
 Available to the EIS Market by Day and for the Month

Day	Available Capacity	Dispatchable Capacity	Percent Dispatchable
2/1/2007	20,184	10,055	50%
2/2/2007	19,319	9,680	50%
2/3/2007	17,946	8,876	49%
2/4/2007	18,241	8,974	49%
2/5/2007	19,317	9,279	48%
2/6/2007	18,636	9,203	49%
2/7/2007	18,014	9,089	50%
2/8/2007	18,561	9,278	50%
2/9/2007	18,661	9,062	49%
2/10/2007	17,947	9,019	50%
2/11/2007	16,781	8,225	49%
2/12/2007	17,099	8,550	50%
2/13/2007	18,311	9,642	53%
2/14/2007	19,513	9,947	51%
2/15/2007	20,553	10,297	50%
2/16/2007	20,078	10,096	50%
2/17/2007	18,338	9,282	51%
2/18/2007	17,274	8,797	51%
2/19/2007	17,628	8,999	51%
2/20/2007	17,162	8,771	51%
2/21/2007	16,441	8,325	51%
2/22/2007	16,847	8,458	50%
2/23/2007	17,216	8,644	50%
2/24/2007	14,789	7,346	50%
2/25/2007	14,969	7,620	51%
2/26/2007	16,745	8,207	49%
2/27/2007	18,193	8,216	45%
2/28/2007	17,696	7,932	45%
Total	502,458	249,872	50%

- 1) Available Capacity represents the sum of the Resource-Plan max for all Available generating units.
- 2) The Dispatchable Capacity is calculated using the Resource Plan and reserve designation. The upper level of the Dispatchable Capacity is equal to Maximum Economic Limit which is the Resource-Plan maximum minus Regulation Up and reserve services. The lower level of the Dispatchable Capacity is equal to the Minimum Economic Limit which is the Resource-Plan minimum plus Regulation Down service.
- 3) Percent Dispatchable is the Dispatchable Capacity divided by the Available Capacity.

IV. TRANSMISSION CONGESTION

Table Seven
Price Divergence as a
Rough Indicator of Transmission Congestion

Day	% of Hours with Price Divergence			Average On-Peak LIP without Congestion	Average On-Peak LIP with Congestion
	Off-Peak	On-Peak	Total		
1	25%	31%	29%	\$61.45	\$73.66
2	13%	63%	46%	\$52.17	\$70.97
3	29%	NA	29%	NA	NA
4	33%	NA	33%	NA	NA
5	0%	100%	67%	NA	\$86.59
6	50%	100%	83%	NA	\$77.42
7	88%	25%	46%	\$48.49	\$61.13
8	75%	88%	83%	\$69.72	\$71.88
9	38%	100%	79%	NA	\$81.33
10	4%	NA	4%	NA	NA
11	8%	NA	8%	NA	NA
12	25%	44%	38%	\$56.10	\$57.28
13	100%	100%	100%	NA	\$94.93
14	100%	100%	100%	NA	\$106.83
15	100%	100%	100%	NA	\$120.74
16	75%	100%	92%	NA	\$88.60
17	79%	NA	79%	NA	NA
18	58%	NA	58%	NA	NA
19	100%	63%	75%	\$48.70	\$42.71
20	100%	100%	100%	NA	\$41.83
21	88%	94%	92%	\$72.29	\$42.12
22	88%	88%	88%	\$63.18	\$45.15
23	75%	81%	79%	\$49.51	\$35.72
24	88%	NA	88%	NA	NA
25	67%	NA	67%	NA	NA
26	75%	50%	58%	\$47.62	\$59.18
27	63%	75%	71%	\$21.27	\$61.30
28	75%	63%	67%	\$41.36	\$32.34
Total	56%	78%	66%	\$51.50	\$72.75

- 1) All prices are load-weighted and are per MWh.
- 2) LIPs diverge across locations only when congestion occurs. Congestion in a single 5-minute interval will result in price divergence being reported for that hour for this table.
- 3) The percentages represented here are out of the hours in that period (16 for On-Peak and 8 for Off-Peak during the week and 24 hours for Off-Peak during the weekend and NERC Holidays. President's Day is not considered a NERC Holiday). For example, 4 hours of peak congestion would show 25%.

Table Eight
Transmission Congestion Summary
by Flowgate for the Month

Flowgate Name	Control Area	Count of Congested Intervals	Count of Binding Intervals	Count of Violated Intervals
SPP to SPS Ties	SPP-SPS	1812	1801	11
Flint Creek to Tontitown ¹	CSWS	824	132	692
Stilwell to Peculiar	KCPL	705	439	266
Flint Creek to Tontitown ²	CSWS	670	56	614
SPS North South	SPS	459	453	6
Atlas Junction to Carthage	EDE-SPA	399	363	36
Valliant Transformer	CSWS	231	120	111
Judson Large to Greensburg	WPEK	211	139	72
Wilburt to Livonia	EES	95	9	86
Broken Bow Dam to Clayton	SPA-CSWS	47	37	10
Pecan Transformer	OKGE	40	40	0
Hugo to Valliant	WFEC-CSWS	16	14	2
Overton to Sibley	MISO-MPS	13	8	5
S. Coffeyville to Dearing	CSWS-WR	9	8	1
Bartlesville SE to Bartlesville N	CSWS	8	8	0
Creswell to Newkirk / Kildare	WR-OKGE	7	7	0
Okmulgee to East Central Henryetta	CSWS	2	2	0
N. W. Texarkana to Patterson	CSWS	2	2	0
Total Flowgate-Intervals		5550	3638	1912

¹ This Flint Creek to Tontitown has Flint Creek to Gentry as the contingency path.

² This Flint Creek to Tontitown is a temporary flowgate with CHFA as the contingency path.

- 1) This table was created by SPP.
- 2) Flowgate Name is the list of the flowgates that were congested during the month.
- 3) Count of Congested Intervals is the count of intervals in which the flowgate was congested during the month. The table is sorted in descending order by this column.
- 4) Count of Binding Intervals is the count of intervals in which the flowgate limit was binding during the month.
- 5) Count of Violating Intervals is the count of intervals in which the flowgate limit was violated during the month.
- 6) A Flowgate-Interval is defined as one flowgate per five minute interval. The total number of Flowgate-Intervals in a month is equal to the number of flowgates multiplied by the number of intervals in the month (12*24*28).

APPENDICES

Table A:
Average Prices by Day for
Load Settlement Locations and SPP-Wide

Market Day	SPP	CSWS	EDE	GRDA	KACY	KCPL	OKGE	SECI	SPS	WFEC	WPEK	WR
2/1/2007	57.78	61.66	58.39	53.27	55.94	56.35	56.35	55.95	56.10	56.43	56.24	56.21
2/2/2007	57.10	61.87	59.43	44.73	64.65	65.58	50.94	54.34	52.07	51.87	53.39	57.56
2/3/2007	69.83	66.90	69.03	62.92	85.65	88.53	62.84	68.10	70.62	64.72	56.74	72.95
2/4/2007	48.32	48.56	48.52	47.95	47.39	47.39	48.07	47.49	49.86	48.80	47.46	47.42
2/5/2007	71.80	62.02	72.60	51.68	121.15	128.29	53.31	67.37	59.39	57.38	39.20	87.33
2/6/2007	63.42	58.51	57.76	46.92	103.98	113.27	49.91	52.75	49.35	70.47	19.52	69.45
2/7/2007	46.68	46.19	46.29	46.08	45.35	45.86	46.47	45.56	49.67	47.44	45.77	45.87
2/8/2007	67.75	66.95	63.11	65.51	64.53	64.73	67.42	65.20	76.27	71.55	64.98	64.71
2/9/2007	76.39	92.66	80.03	52.76	72.32	72.45	68.23	70.44	69.22	70.27	70.46	71.79
2/10/2007	64.32	64.58	64.37	64.25	64.06	64.19	64.29	64.10	64.19	64.30	64.11	64.17
2/11/2007	49.57	49.87	50.00	49.45	49.47	49.62	49.19	49.47	49.67	49.54	49.13	49.30
2/12/2007	46.80	46.66	46.56	44.99	45.70	46.37	45.83	45.79	50.20	45.26	46.33	46.21
2/13/2007	77.10	116.36	95.78	28.84	68.65	70.64	53.43	57.77	65.97	58.14	56.92	64.63
2/14/2007	97.14	148.56	124.31	35.52	91.42	92.43	64.73	73.84	72.34	71.82	71.02	82.41
2/15/2007	117.89	150.63	123.11	52.74	148.29	152.85	79.40	99.21	100.88	89.01	70.50	116.20
2/16/2007	86.91	103.74	101.38	43.34	113.23	116.27	61.31	75.54	69.10	68.87	58.05	91.04
2/17/2007	60.49	65.29	65.72	46.32	71.14	72.18	52.06	51.47	54.39	54.46	42.24	63.39
2/18/2007	39.26	42.19	42.86	42.15	41.93	42.76	41.97	11.21	27.46	41.82	(21.39)	46.41
2/19/2007	41.97	42.88	43.20	42.64	42.65	43.17	42.62	33.01	38.96	42.91	23.57	43.84
2/20/2007	35.61	33.03	33.19	33.05	32.59	33.09	33.05	32.58	49.38	33.21	32.73	32.95
2/21/2007	38.61	35.62	36.09	35.59	35.39	35.66	35.75	35.29	54.40	35.81	35.39	35.58
2/22/2007	40.78	39.10	38.90	38.60	38.56	39.04	38.83	38.43	50.51	38.77	38.75	38.94
2/23/2007	34.38	34.09	34.51	33.85	33.93	34.16	34.06	32.49	36.15	34.13	31.59	34.17
2/24/2007	47.58	44.52	48.52	41.72	68.83	71.30	41.03	40.96	41.55	42.72	33.81	52.95
2/25/2007	44.02	42.00	43.82	40.43	54.89	56.48	40.19	39.05	42.95	40.85	35.33	46.09
2/26/2007	47.35	46.43	47.73	45.24	54.05	54.59	45.11	44.83	45.65	45.47	42.69	48.97
2/27/2007	43.13	39.07	43.49	33.50	69.79	72.53	33.23	38.70	37.01	36.12	24.81	50.43
2/28/2007	30.18	28.90	28.78	28.34	29.72	30.01	28.50	28.15	36.80	28.48	27.70	29.12

Table B:
Average Prices by Hour for
Load Settlement Locations and SPP-Wide

Hour Ending CPT	SPP	CSWS	EDE	GRDA	KACY	KCPL	OKGE	SECI	SPS	WFEC	WPEK	WR
2/1/2007 1:00	31.78	31.78	31.78	31.78	31.78	31.78	31.78	31.78	31.78	31.78	31.78	31.78
2/1/2007 2:00	22.80	22.80	22.80	22.80	22.80	22.80	22.80	22.80	22.80	22.80	22.80	22.80
2/1/2007 3:00	38.73	38.73	38.73	38.73	38.73	38.73	38.73	38.73	38.73	38.73	38.73	38.73
2/1/2007 4:00	39.62	39.62	39.62	39.62	39.62	39.62	39.62	39.62	39.62	39.62	39.62	39.62
2/1/2007 5:00	48.31	48.31	48.31	48.31	48.31	48.31	48.31	48.31	48.31	48.31	48.31	48.31
2/1/2007 6:00	60.94	60.94	60.94	60.94	60.94	60.94	60.94	60.94	60.94	60.94	60.94	60.94
2/1/2007 7:00	59.88	59.88	59.88	59.88	59.88	59.88	59.88	59.88	59.88	59.88	59.88	59.88
2/1/2007 8:00	62.40	62.40	62.40	62.40	62.40	62.40	62.40	62.40	62.40	62.40	62.40	62.40
2/1/2007 9:00	61.71	61.71	61.71	61.71	61.71	61.71	61.71	61.71	61.71	61.71	61.71	61.71
2/1/2007 10:00	63.33	63.33	63.33	63.33	63.33	63.33	63.33	63.33	63.33	63.33	63.33	63.33
2/1/2007 11:00	80.85	105.51	93.18	45.63	73.91	74.06	68.46	71.26	69.00	71.30	71.19	73.07
2/1/2007 12:00	63.08	63.08	63.08	63.08	63.08	63.08	63.08	63.08	63.08	63.08	63.08	63.08
2/1/2007 13:00	62.41	62.41	62.41	62.41	62.41	62.41	62.41	62.41	62.41	62.41	62.41	62.41
2/1/2007 14:00	63.58	63.58	63.58	63.58	63.58	63.58	63.58	63.58	63.58	63.58	63.58	63.58
2/1/2007 15:00	61.26	61.26	61.26	61.26	61.26	61.26	61.26	61.26	61.26	61.26	61.26	61.26
2/1/2007 16:00	57.47	57.47	57.47	57.47	57.47	57.47	57.47	57.47	57.47	57.47	57.47	57.47
2/1/2007 17:00	62.54	62.54	62.54	62.54	62.54	62.54	62.54	62.54	62.54	62.54	62.54	62.54
2/1/2007 18:00	66.70	70.87	68.84	60.64	65.49	65.51	64.55	65.06	64.66	65.05	65.03	65.34
2/1/2007 19:00	80.63	103.36	92.13	47.52	74.02	74.15	68.89	71.70	69.50	71.64	71.54	73.24
2/1/2007 20:00	71.07	77.14	74.20	62.18	69.33	69.36	67.95	68.70	68.10	68.68	68.65	69.11
2/1/2007 21:00	68.81	72.25	70.58	63.79	67.83	67.85	67.06	67.48	67.14	67.46	67.45	67.71
2/1/2007 22:00	58.07	58.07	58.07	58.07	58.07	58.07	58.07	58.07	58.07	58.07	58.07	58.07
2/1/2007 23:00	50.73	59.81	44.69	47.22	43.62	43.62	49.56	45.89	50.33	49.12	45.51	44.08
2/2/2007 0:00	28.73	46.00	17.32	22.08	15.28	15.26	26.52	19.60	27.99	25.71	18.88	16.14

Table B:
Average Prices by Hour for
Load Settlement Locations and SPP-Wide

Hour Ending CPT	SPP	CSWS	EDE	GRDA	KACY	KCPL	OKGE	SECI	SPS	WFEC	WPEK	WR
2/2/2007 1:00	20.37	25.51	16.97	18.39	16.37	16.36	19.71	17.65	20.15	19.47	17.44	16.63
2/2/2007 2:00	43.02	43.02	43.02	43.02	43.02	43.02	43.02	43.02	43.02	43.02	43.02	43.02
2/2/2007 3:00	16.43	16.43	16.43	16.43	16.43	16.43	16.43	16.43	16.43	16.43	16.43	16.43
2/2/2007 4:00	16.43	16.43	16.43	16.43	16.43	16.43	16.43	16.43	16.43	16.43	16.43	16.43
2/2/2007 5:00	30.98	30.98	30.98	30.98	30.98	30.98	30.98	30.98	30.98	30.98	30.98	30.98
2/2/2007 6:00	53.93	53.93	53.93	53.93	53.93	53.93	53.93	53.93	53.93	53.93	53.93	53.93
2/2/2007 7:00	72.11	72.11	72.11	72.11	72.11	72.11	72.11	72.11	72.11	72.11	72.11	72.11
2/2/2007 8:00	68.74	68.74	68.74	68.74	68.74	68.74	68.74	68.74	68.74	68.74	68.74	68.74
2/2/2007 9:00	80.89	93.14	86.60	55.06	87.90	87.27	70.18	76.33	72.79	71.22	79.10	79.57
2/2/2007 10:00	92.49	129.00	109.72	29.39	97.18	96.38	67.80	78.73	71.92	71.34	82.59	84.59
2/2/2007 11:00	69.43	50.23	57.55	60.35	119.87	116.85	59.56	77.31	68.94	55.56	89.81	86.42
2/2/2007 12:00	65.65	41.56	50.68	54.18	128.64	124.86	53.13	75.31	64.70	48.18	90.89	86.73
2/2/2007 13:00	45.41	45.41	45.41	45.41	45.41	45.41	45.41	45.41	45.41	45.41	45.41	45.41
2/2/2007 14:00	25.74	29.34	23.51	24.48	23.10	23.09	25.34	23.99	25.60	25.18	23.83	23.27
2/2/2007 15:00	25.19	30.63	21.83	23.29	21.20	21.19	24.59	22.54	24.99	24.35	22.31	21.46
2/2/2007 16:00	20.23	20.23	20.23	20.23	20.23	20.23	20.23	20.23	20.23	20.23	20.23	20.23
2/2/2007 17:00	46.20	46.20	46.20	46.20	46.20	46.20	46.20	46.20	46.20	46.20	46.20	46.20
2/2/2007 18:00	56.36	56.36	56.36	56.36	56.36	56.36	56.36	56.36	56.36	56.36	56.36	56.36
2/2/2007 19:00	92.88	126.18	110.59	32.83	107.94	111.31	65.39	76.30	68.31	71.94	59.88	87.08
2/2/2007 20:00	94.76	114.30	107.30	45.60	130.16	135.46	67.41	83.56	70.15	74.14	55.17	97.01
2/2/2007 21:00	76.22	102.31	89.57	38.93	68.61	68.75	62.95	66.00	63.52	65.96	65.81	67.73
2/2/2007 22:00	79.29	82.31	82.49	63.21	100.96	103.85	68.26	75.01	70.27	71.08	60.38	82.97
2/2/2007 23:00	67.88	67.88	67.88	67.88	67.88	67.88	67.88	67.88	67.88	67.88	67.88	67.88
2/3/2007 0:00	74.58	74.58	74.58	74.58	74.58	74.58	74.58	74.58	74.58	74.58	74.58	74.58

Table B:
Average Prices by Hour for
Load Settlement Locations and SPP-Wide

Hour Ending CPT	SPP	CSWS	EDE	GRDA	KACY	KCPL	OKGE	SECI	SPS	WFEC	WPEK	WR
2/3/2007 1:00	78.84	78.84	78.84	78.84	78.84	78.84	78.84	78.84	78.84	78.84	78.84	78.84
2/3/2007 2:00	70.08	70.08	70.08	70.08	70.08	70.08	70.08	70.08	70.08	70.08	70.08	70.08
2/3/2007 3:00	78.63	78.63	78.63	78.63	78.63	78.63	78.63	78.63	78.63	78.63	78.63	78.63
2/3/2007 4:00	69.61	69.61	69.61	69.61	69.61	69.61	69.61	69.61	69.61	69.61	69.61	69.61
2/3/2007 5:00	68.11	68.11	68.11	68.11	68.11	68.11	68.11	68.11	68.11	68.11	68.11	68.11
2/3/2007 6:00	70.69	70.69	70.69	70.69	70.69	70.69	70.69	70.69	70.69	70.69	70.69	70.69
2/3/2007 7:00	62.80	62.80	62.80	62.80	62.80	62.80	62.80	62.80	62.80	62.80	62.80	62.80
2/3/2007 8:00	71.55	71.55	71.55	71.55	71.55	71.55	71.55	71.55	71.55	71.55	71.55	71.55
2/3/2007 9:00	71.66	71.66	71.66	71.66	71.66	71.66	71.66	71.66	71.66	71.66	71.66	71.66
2/3/2007 10:00	75.21	80.33	78.32	67.22	73.69	73.73	72.42	73.12	72.57	73.03	73.07	73.66
2/3/2007 11:00	70.70	70.70	70.70	70.70	70.70	70.70	70.70	70.70	70.70	70.70	70.70	70.70
2/3/2007 12:00	65.59	65.59	65.59	65.59	65.59	65.59	65.59	65.59	65.59	65.59	65.59	65.59
2/3/2007 13:00	64.55	64.55	64.55	64.55	64.55	64.55	64.55	64.55	64.55	64.55	64.55	64.55
2/3/2007 14:00	56.74	56.74	56.74	56.74	56.74	56.74	56.74	56.74	56.74	56.74	56.74	56.74
2/3/2007 15:00	34.56	34.56	34.56	34.56	34.56	34.56	34.56	34.56	34.56	34.56	34.56	34.56
2/3/2007 16:00	45.95	45.95	45.95	45.95	45.95	45.95	45.95	45.95	45.95	45.95	45.95	45.95
2/3/2007 17:00	45.76	45.76	45.76	45.76	45.76	45.76	45.76	45.76	45.76	45.76	45.76	45.76
2/3/2007 18:00	70.85	62.42	69.80	52.85	124.65	131.16	51.28	65.61	55.93	56.44	31.77	83.37
2/3/2007 19:00	96.65	84.89	95.19	70.52	175.45	184.95	68.09	89.09	74.98	75.73	39.36	115.01
2/3/2007 20:00	144.80	119.32	144.74	86.87	330.99	353.13	79.88	151.19	82.62	97.37	21.05	192.07
2/3/2007 21:00	84.03	77.24	83.93	68.40	133.94	139.91	66.64	83.97	68.50	71.34	50.28	96.56
2/3/2007 22:00	66.40	62.79	66.11	58.22	91.60	94.66	57.40	64.51	60.25	59.83	48.60	72.44
2/3/2007 23:00	67.43	43.00	42.90	42.99	42.76	42.76	43.02	40.15	214.58	42.98	42.09	42.69
2/4/2007 0:00	32.64	32.64	32.64	32.64	32.64	32.64	32.64	32.64	32.64	32.64	32.64	32.64

Table B:
Average Prices by Hour for
Load Settlement Locations and SPP-Wide

Hour Ending CPT	SPP	CSWS	EDE	GRDA	KACY	KCPL	OKGE	SECI	SPS	WFEC	WPEK	WR
2/4/2007 1:00	46.27	46.27	46.27	46.27	46.27	46.27	46.27	46.27	46.27	46.27	46.27	46.27
2/4/2007 2:00	42.96	42.96	42.96	42.96	42.96	42.96	42.96	42.96	42.96	42.96	42.96	42.96
2/4/2007 3:00	51.31	53.74	49.75	50.41	49.46	49.46	51.01	50.06	51.20	50.89	49.97	49.59
2/4/2007 4:00	56.10	56.10	56.10	56.10	56.10	56.10	56.10	56.10	56.10	56.10	56.10	56.10
2/4/2007 5:00	52.30	52.30	52.30	52.30	52.30	52.30	52.30	52.30	52.30	52.30	52.30	52.30
2/4/2007 6:00	54.47	54.47	54.47	54.47	54.47	54.47	54.47	54.47	54.47	54.47	54.47	54.47
2/4/2007 7:00	55.47	55.47	55.47	55.47	55.47	55.47	55.47	55.47	55.47	55.47	55.47	55.47
2/4/2007 8:00	112.05	111.93	111.77	111.79	111.89	111.89	112.29	112.13	112.27	112.42	112.03	111.91
2/4/2007 9:00	65.66	65.66	65.66	65.66	65.66	65.66	65.66	65.66	65.66	65.66	65.66	65.66
2/4/2007 10:00	63.27	63.27	63.27	63.27	63.27	63.27	63.27	63.27	63.27	63.27	63.27	63.27
2/4/2007 11:00	54.73	53.56	53.54	53.56	53.53	53.53	53.57	53.55	61.38	53.56	53.55	53.53
2/4/2007 12:00	52.89	49.97	49.93	49.97	49.88	49.88	49.99	49.95	69.39	49.97	49.94	49.90
2/4/2007 13:00	48.94	46.77	46.74	46.76	46.71	46.71	46.78	46.76	61.17	46.77	46.74	46.72
2/4/2007 14:00	22.54	22.07	22.06	22.07	22.06	22.06	22.08	22.07	25.17	22.07	22.07	22.06
2/4/2007 15:00	14.42	14.42	14.42	14.42	14.42	14.42	14.42	14.42	14.42	14.42	14.42	14.42
2/4/2007 16:00	14.80	14.32	14.32	14.32	14.31	14.31	14.33	14.32	17.52	14.32	14.32	14.31
2/4/2007 17:00	28.23	28.23	28.23	28.23	28.23	28.23	28.23	28.23	28.23	28.23	28.23	28.23
2/4/2007 18:00	29.36	29.36	29.36	29.36	29.36	29.36	29.36	29.36	29.36	29.36	29.36	29.36
2/4/2007 19:00	50.01	50.01	50.01	50.01	50.01	50.01	50.01	50.01	50.01	50.01	50.01	50.01
2/4/2007 20:00	46.76	45.91	46.87	47.07	46.80	46.80	47.29	47.02	47.24	47.20	46.99	46.87
2/4/2007 21:00	50.28	50.28	50.28	50.28	50.28	50.28	50.28	50.28	50.28	50.28	50.28	50.28
2/4/2007 22:00	54.27	54.27	54.27	54.27	54.27	54.27	54.27	54.27	54.27	54.27	54.27	54.27
2/4/2007 23:00	53.85	53.85	53.85	53.85	53.85	53.85	53.85	53.85	53.85	53.85	53.85	53.85
2/5/2007 0:00	22.24	22.24	22.24	22.24	22.24	22.24	22.24	22.24	22.24	22.24	22.24	22.24

Table B:
Average Prices by Hour for
Load Settlement Locations and SPP-Wide

Hour Ending CPT	SPP	CSWS	EDE	GRDA	KACY	KCPL	OKGE	SECI	SPS	WFEC	WPEK	WR
2/5/2007 1:00	20.57	20.57	20.57	20.57	20.57	20.57	20.57	20.57	20.57	20.57	20.57	20.57
2/5/2007 2:00	36.06	36.06	36.06	36.06	36.06	36.06	36.06	36.06	36.06	36.06	36.06	36.06
2/5/2007 3:00	27.63	27.63	27.63	27.63	27.63	27.63	27.63	27.63	27.63	27.63	27.63	27.63
2/5/2007 4:00	39.67	39.67	39.67	39.67	39.67	39.67	39.67	39.67	39.67	39.67	39.67	39.67
2/5/2007 5:00	48.57	48.57	48.57	48.57	48.57	48.57	48.57	48.57	48.57	48.57	48.57	48.57
2/5/2007 6:00	62.25	62.25	62.25	62.25	62.25	62.25	62.25	62.25	62.25	62.25	62.25	62.25
2/5/2007 7:00	101.99	101.48	102.56	95.30	114.79	116.23	96.60	100.50	97.90	97.75	93.49	105.30
2/5/2007 8:00	138.98	159.21	156.90	41.42	249.38	262.63	76.55	115.23	88.84	90.05	49.83	161.37
2/5/2007 9:00	71.78	79.38	75.61	57.48	72.51	73.02	65.39	67.48	70.13	66.72	65.13	69.53
2/5/2007 10:00	65.66	65.36	65.01	63.76	64.46	64.46	64.37	64.42	71.32	64.43	64.40	64.44
2/5/2007 11:00	88.32	74.09	85.89	64.30	159.46	168.33	62.08	82.55	72.52	67.61	41.62	110.02
2/5/2007 12:00	131.56	70.34	126.37	59.89	365.08	393.99	56.80	118.88	78.99	73.66	(14.38)	205.41
2/5/2007 13:00	126.03	39.63	127.76	38.74	365.15	393.41	56.31	124.48	83.13	72.36	0.30	214.22
2/5/2007 14:00	41.84	36.15	42.63	43.94	42.12	42.12	45.34	43.70	45.15	44.98	43.47	42.62
2/5/2007 15:00	67.60	52.56	65.43	47.37	128.64	136.71	46.20	62.71	52.21	50.73	28.28	86.40
2/5/2007 16:00	58.17	46.65	55.82	39.20	112.00	119.08	37.91	53.00	43.19	41.92	22.62	74.45
2/5/2007 17:00	56.71	46.55	55.49	35.55	114.64	123.26	34.26	49.27	39.00	39.87	10.28	71.02
2/5/2007 18:00	117.44	91.36	113.77	63.72	262.06	283.19	60.50	97.89	72.16	74.46	0.36	152.61
2/5/2007 19:00	108.82	77.89	116.85	87.50	202.84	212.30	66.70	109.12	84.25	75.27	73.19	152.96
2/5/2007 20:00	83.11	74.00	82.34	64.97	135.53	142.77	63.03	76.02	68.18	67.96	42.09	96.31
2/5/2007 21:00	61.92	60.76	60.75	60.77	60.73	60.73	60.78	60.76	69.02	60.77	60.75	60.74
2/5/2007 22:00	54.91	53.46	53.45	53.47	53.42	53.42	53.48	53.45	63.57	53.47	53.45	53.43
2/5/2007 23:00	46.98	46.98	46.98	46.98	46.98	46.98	46.98	46.98	46.98	46.98	46.98	46.98
2/6/2007 0:00	24.86	24.86	24.86	24.86	24.86	24.86	24.86	24.86	24.86	24.86	24.86	24.86

Table B:
Average Prices by Hour for
Load Settlement Locations and SPP-Wide

Hour Ending CPT	SPP	CSWS	EDE	GRDA	KACY	KCPL	OKGE	SECI	SPS	WFEC	WPEK	WR
2/6/2007 1:00	29.69	31.20	25.76	29.11	25.63	25.62	31.59	27.20	30.01	42.17	26.68	25.82
2/6/2007 2:00	30.80	31.11	30.00	30.68	29.98	29.98	31.17	30.29	30.85	33.29	30.19	30.01
2/6/2007 3:00	35.91	35.91	35.91	35.91	35.91	35.91	35.91	35.91	35.91	35.91	35.91	35.91
2/6/2007 4:00	28.06	28.06	28.06	28.06	28.06	28.06	28.06	28.06	28.06	28.06	28.06	28.06
2/6/2007 5:00	31.39	31.39	31.39	31.39	31.39	31.39	31.39	31.39	31.39	31.39	31.39	31.39
2/6/2007 6:00	62.59	65.49	52.23	61.43	51.90	51.87	68.15	56.14	63.56	96.53	54.73	52.39
2/6/2007 7:00	104.41	91.71	98.83	70.67	196.93	211.21	71.99	89.86	76.64	95.48	24.50	124.57
2/6/2007 8:00	132.99	112.85	122.13	78.17	282.42	304.80	81.34	108.54	88.14	124.96	1.23	164.30
2/6/2007 9:00	90.41	81.96	83.83	69.58	156.14	166.69	68.85	75.91	67.99	99.04	26.28	101.67
2/6/2007 10:00	50.94	50.93	50.43	55.96	50.64	51.06	52.63	47.75	48.51	60.87	46.17	48.76
2/6/2007 11:00	86.33	78.01	71.11	52.23	172.51	189.88	68.67	59.90	61.04	108.98	(31.72)	83.59
2/6/2007 12:00	67.01	66.69	55.05	58.31	88.24	93.65	64.28	52.83	57.02	102.27	26.30	61.05
2/6/2007 13:00	51.86	51.54	46.65	47.68	60.94	63.09	50.15	46.22	47.65	66.98	36.33	50.24
2/6/2007 14:00	94.77	79.35	84.65	50.77	207.95	229.16	54.64	72.02	59.87	95.08	(9.48)	119.32
2/6/2007 15:00	78.70	70.16	68.62	51.02	148.18	159.69	56.10	62.47	57.21	89.08	12.23	90.42
2/6/2007 16:00	19.08	19.30	18.41	18.94	18.63	18.66	19.40	18.63	19.05	21.27	18.38	18.48
2/6/2007 17:00	17.29	17.42	16.77	17.07	17.27	17.35	17.42	16.90	17.18	18.86	16.50	16.91
2/6/2007 18:00	95.26	77.96	85.58	45.62	223.33	244.00	49.86	69.97	55.80	90.40	(17.06)	121.86
2/6/2007 19:00	111.00	95.87	99.58	67.45	221.03	238.55	72.41	86.96	76.18	113.80	9.37	131.32
2/6/2007 20:00	91.04	83.23	79.20	64.24	154.26	165.20	70.22	73.44	70.07	109.05	24.62	99.09
2/6/2007 21:00	90.24	79.82	79.82	59.79	167.18	179.77	64.50	70.85	65.36	100.45	15.83	102.53
2/6/2007 22:00	38.52	39.54	35.61	38.38	35.51	35.50	40.38	36.74	38.66	48.17	36.31	35.65
2/6/2007 23:00	26.20	26.20	26.20	26.20	26.20	26.20	26.20	26.20	26.20	26.20	26.20	26.20
2/7/2007 0:00	13.86	13.81	13.81	13.81	13.81	13.81	13.81	13.81	14.13	13.81	13.81	13.81

Table B:
Average Prices by Hour for
Load Settlement Locations and SPP-Wide

Hour Ending CPT	SPP	CSWS	EDE	GRDA	KACY	KCPL	OKGE	SECI	SPS	WFEC	WPEK	WR
2/7/2007 1:00	15.30	14.82	14.82	14.82	14.81	14.81	14.83	14.82	17.88	14.83	14.82	14.81
2/7/2007 2:00	18.80	18.62	18.62	18.62	18.62	18.62	18.62	18.62	19.75	18.62	18.62	18.62
2/7/2007 3:00	15.05	14.99	14.99	14.99	14.99	14.99	14.99	14.99	15.35	14.99	14.99	14.99
2/7/2007 4:00	17.81	17.62	17.62	17.62	17.61	17.61	17.62	17.62	18.84	17.62	17.62	17.61
2/7/2007 5:00	48.96	48.96	48.96	48.96	48.96	48.96	48.96	48.96	48.96	48.96	48.96	48.96
2/7/2007 6:00	55.81	53.86	53.86	53.87	53.82	53.83	53.89	53.86	66.84	53.89	53.85	53.83
2/7/2007 7:00	56.81	55.50	55.51	55.50	55.57	55.58	55.50	55.50	64.48	55.50	55.43	55.51
2/7/2007 8:00	57.58	56.02	52.56	56.21	52.36	52.38	59.02	54.18	67.65	69.09	53.56	52.62
2/7/2007 9:00	64.04	63.85	60.50	63.10	60.40	60.39	65.16	61.61	69.42	72.68	61.17	60.54
2/7/2007 10:00	61.54	61.54	61.54	61.54	61.54	61.54	61.54	61.54	61.54	61.54	61.54	61.54
2/7/2007 11:00	53.40	53.40	53.40	53.40	53.40	53.40	53.40	53.40	53.40	53.40	53.40	53.40
2/7/2007 12:00	53.23	53.23	53.23	53.23	53.23	53.23	53.23	53.23	53.23	53.23	53.23	53.23
2/7/2007 13:00	44.59	44.59	44.59	44.59	44.59	44.59	44.59	44.59	44.59	44.59	44.59	44.59
2/7/2007 14:00	40.06	40.06	40.06	40.06	40.06	40.06	40.06	40.06	40.06	40.06	40.06	40.06
2/7/2007 15:00	31.07	31.07	31.07	31.07	31.07	31.07	31.07	31.07	31.07	31.07	31.07	31.07
2/7/2007 16:00	24.07	24.07	24.07	24.07	24.07	24.07	24.07	24.07	24.07	24.07	24.07	24.07
2/7/2007 17:00	31.81	31.81	31.81	31.81	31.81	31.81	31.81	31.81	31.81	31.81	31.81	31.81
2/7/2007 18:00	52.42	52.42	52.42	52.42	52.42	52.42	52.42	52.42	52.42	52.42	52.42	52.42
2/7/2007 19:00	64.59	64.59	64.59	64.59	64.59	64.59	64.59	64.59	64.59	64.59	64.59	64.59
2/7/2007 20:00	62.42	62.42	62.42	62.42	62.42	62.42	62.42	62.42	62.42	62.42	62.42	62.42
2/7/2007 21:00	56.92	56.92	56.92	56.92	56.92	56.92	56.92	56.92	56.92	56.92	56.92	56.92
2/7/2007 22:00	66.00	65.16	65.16	65.17	65.14	65.14	65.17	65.16	71.01	65.17	65.15	65.14
2/7/2007 23:00	57.67	55.44	55.40	55.44	55.37	55.37	55.45	55.43	70.56	55.44	55.41	55.39
2/8/2007 0:00	40.00	35.37	35.30	35.36	35.23	35.23	35.40	35.35	67.51	35.37	35.32	35.26

Table B:
Average Prices by Hour for
Load Settlement Locations and SPP-Wide

Hour Ending CPT	SPP	CSWS	EDE	GRDA	KACY	KCPL	OKGE	SECI	SPS	WFEC	WPEK	WR
2/8/2007 1:00	46.33	42.49	42.44	42.49	42.38	42.39	42.52	42.48	67.69	42.50	42.46	42.41
2/8/2007 2:00	55.77	54.29	54.27	54.29	54.25	54.25	54.30	54.28	63.87	54.29	54.27	54.26
2/8/2007 3:00	60.44	60.19	60.19	60.19	60.19	60.19	60.20	60.19	61.78	60.19	60.19	60.19
2/8/2007 4:00	50.54	48.74	48.72	48.74	48.69	48.69	48.75	48.73	60.35	48.74	48.72	48.70
2/8/2007 5:00	54.25	54.17	54.17	54.17	54.17	54.17	54.18	54.17	54.69	54.18	54.17	54.17
2/8/2007 6:00	58.95	58.14	58.13	58.15	58.12	58.12	58.15	58.14	63.56	58.15	58.13	58.13
2/8/2007 7:00	103.59	79.19	78.98	79.30	78.52	78.53	79.49	79.03	249.35	79.29	78.88	78.64
2/8/2007 8:00	65.80	65.33	65.33	65.33	65.32	65.32	65.34	65.33	68.61	65.34	65.33	65.32
2/8/2007 9:00	64.99	64.86	64.86	64.86	64.85	64.85	64.86	64.86	65.79	64.86	64.86	64.86
2/8/2007 10:00	64.17	63.74	63.74	63.74	63.73	63.73	63.75	63.74	66.73	63.74	63.73	63.73
2/8/2007 11:00	66.66	66.59	66.59	66.59	66.59	66.59	66.59	66.59	67.09	66.59	66.59	66.59
2/8/2007 12:00	66.24	66.10	66.10	66.11	66.10	66.10	66.11	66.10	67.03	66.10	66.10	66.10
2/8/2007 13:00	62.16	61.41	61.41	61.42	61.39	61.39	61.42	61.41	66.58	61.42	61.41	61.40
2/8/2007 14:00	62.41	61.87	61.86	61.87	61.85	61.85	61.87	61.86	65.69	61.87	61.86	61.85
2/8/2007 15:00	67.22	67.04	67.04	67.04	67.04	67.04	67.04	67.04	68.32	67.04	67.04	67.04
2/8/2007 16:00	76.18	77.68	66.39	75.25	66.13	66.13	82.59	70.40	77.07	109.69	68.73	66.61
2/8/2007 17:00	75.58	77.89	63.46	74.35	63.15	63.15	83.20	68.35	76.44	115.65	66.36	63.74
2/8/2007 18:00	84.12	85.93	71.22	83.32	70.79	70.80	93.14	76.45	85.02	127.22	74.31	71.44
2/8/2007 19:00	81.67	84.52	47.24	71.95	83.13	82.73	82.99	82.45	81.45	87.39	80.62	82.22
2/8/2007 20:00	68.83	68.83	68.83	68.83	68.83	68.83	68.83	68.83	68.83	68.83	68.83	68.83
2/8/2007 21:00	70.63	70.63	70.63	70.63	70.63	70.63	70.63	70.63	70.63	70.63	70.63	70.63
2/8/2007 22:00	66.76	66.19	66.18	66.19	66.17	66.17	66.19	66.18	70.20	66.19	66.18	66.17
2/8/2007 23:00	72.85	72.85	72.85	72.85	72.85	72.85	72.85	72.85	72.85	72.85	72.85	72.85
2/9/2007 0:00	66.28	66.28	66.28	66.28	66.28	66.28	66.28	66.28	66.28	66.28	66.28	66.28

Table B:
Average Prices by Hour for
Load Settlement Locations and SPP-Wide

Hour Ending CPT	SPP	CSWS	EDE	GRDA	KACY	KCPL	OKGE	SECI	SPS	WFEC	WPEK	WR
2/9/2007 1:00	63.60	63.49	63.49	63.49	63.49	63.49	63.49	63.49	64.20	63.49	63.49	63.49
2/9/2007 2:00	63.01	62.78	62.78	62.78	62.77	62.77	62.78	62.78	64.30	62.78	62.78	62.78
2/9/2007 3:00	58.62	58.62	58.62	58.62	58.62	58.62	58.62	58.62	58.62	58.62	58.62	58.62
2/9/2007 4:00	66.01	66.01	66.01	66.01	66.01	66.01	66.01	66.01	66.01	66.01	66.01	66.01
2/9/2007 5:00	70.29	70.29	70.29	70.29	70.29	70.29	70.29	70.29	70.29	70.29	70.29	70.29
2/9/2007 6:00	74.28	77.08	41.62	64.59	76.98	76.59	74.66	76.13	73.92	76.07	74.67	76.13
2/9/2007 7:00	86.51	99.16	92.35	68.30	83.11	83.15	79.98	81.69	80.38	81.46	81.80	82.69
2/9/2007 8:00	94.51	127.70	109.71	47.15	85.57	85.66	77.52	81.90	78.55	81.33	82.20	84.50
2/9/2007 9:00	87.15	113.08	99.23	50.43	80.28	80.35	73.99	77.40	74.79	76.97	77.63	79.43
2/9/2007 10:00	100.29	145.10	103.54	33.94	90.23	90.14	78.53	84.77	79.48	84.25	84.28	88.30
2/9/2007 11:00	96.77	139.91	103.09	33.96	86.76	86.71	75.73	81.63	76.69	81.35	81.36	85.01
2/9/2007 12:00	84.27	113.18	88.23	42.77	77.68	77.63	70.25	74.27	71.00	73.93	74.11	76.51
2/9/2007 13:00	82.85	115.57	88.28	36.18	75.16	75.13	67.01	71.36	67.72	71.27	71.21	73.88
2/9/2007 14:00	80.22	107.54	91.24	42.24	73.16	73.21	66.54	70.14	67.55	69.86	70.31	72.25
2/9/2007 15:00	69.35	74.21	69.38	61.22	67.65	67.64	66.36	67.03	69.60	67.14	66.99	67.44
2/9/2007 16:00	66.89	74.09	65.20	55.04	65.01	64.97	62.94	64.05	65.53	64.22	63.90	64.65
2/9/2007 17:00	82.23	115.86	93.21	33.61	73.89	73.91	65.15	69.95	66.30	69.75	69.99	72.63
2/9/2007 18:00	88.14	130.07	108.96	28.35	76.96	77.06	66.31	72.25	67.99	71.57	72.64	75.57
2/9/2007 19:00	82.55	110.34	96.22	42.73	75.00	75.06	68.22	71.97	69.19	71.59	72.19	74.10
2/9/2007 20:00	67.89	70.64	69.18	63.81	67.05	67.05	66.40	66.75	66.91	66.72	66.77	66.96
2/9/2007 21:00	61.58	60.74	60.73	60.74	60.71	60.71	60.75	60.73	66.65	60.74	60.72	60.72
2/9/2007 22:00	67.78	67.66	67.66	67.66	67.65	67.65	67.66	67.66	68.50	67.66	67.66	67.65
2/9/2007 23:00	60.21	60.21	60.21	60.21	60.21	60.21	60.21	60.21	60.21	60.21	60.21	60.21
2/10/2007 0:00	62.94	62.94	62.94	62.94	62.94	62.94	62.94	62.94	62.94	62.94	62.94	62.94

Table B:
Average Prices by Hour for
Load Settlement Locations and SPP-Wide

Hour Ending CPT	SPP	CSWS	EDE	GRDA	KACY	KCPL	OKGE	SECI	SPS	WFEC	WPEK	WR
2/10/2007 1:00	60.20	60.20	60.20	60.20	60.20	60.20	60.20	60.20	60.20	60.20	60.20	60.20
2/10/2007 2:00	57.40	57.40	57.40	57.40	57.40	57.40	57.40	57.40	57.40	57.40	57.40	57.40
2/10/2007 3:00	57.17	57.17	57.17	57.17	57.17	57.17	57.17	57.17	57.17	57.17	57.17	57.17
2/10/2007 4:00	60.52	60.52	60.52	60.52	60.52	60.52	60.52	60.52	60.52	60.52	60.52	60.52
2/10/2007 5:00	62.12	62.12	62.12	62.12	62.12	62.12	62.12	62.12	62.12	62.12	62.12	62.12
2/10/2007 6:00	64.90	64.90	64.90	64.90	64.90	64.90	64.90	64.90	64.90	64.90	64.90	64.90
2/10/2007 7:00	73.50	73.50	73.50	73.50	73.50	73.50	73.50	73.50	73.50	73.50	73.50	73.50
2/10/2007 8:00	67.58	67.58	67.58	67.58	67.58	67.58	67.58	67.58	67.58	67.58	67.58	67.58
2/10/2007 9:00	73.29	73.29	73.29	73.29	73.29	73.29	73.29	73.29	73.29	73.29	73.29	73.29
2/10/2007 10:00	72.70	72.70	72.70	72.70	72.70	72.70	72.70	72.70	72.70	72.70	72.70	72.70
2/10/2007 11:00	70.03	70.03	70.03	70.03	70.03	70.03	70.03	70.03	70.03	70.03	70.03	70.03
2/10/2007 12:00	67.16	67.16	67.16	67.16	67.16	67.16	67.16	67.16	67.16	67.16	67.16	67.16
2/10/2007 13:00	57.01	61.57	54.11	55.34	53.54	53.55	56.46	54.70	56.80	56.27	54.39	53.75
2/10/2007 14:00	61.21	61.21	61.21	61.21	61.21	61.21	61.21	61.21	61.21	61.21	61.21	61.21
2/10/2007 15:00	52.25	52.25	52.25	52.25	52.25	52.25	52.25	52.25	52.25	52.25	52.25	52.25
2/10/2007 16:00	57.87	57.87	57.87	57.87	57.87	57.87	57.87	57.87	57.87	57.87	57.87	57.87
2/10/2007 17:00	53.33	53.33	53.33	53.33	53.33	53.33	53.33	53.33	53.33	53.33	53.33	53.33
2/10/2007 18:00	65.81	65.81	65.81	65.81	65.81	65.81	65.81	65.81	65.81	65.81	65.81	65.81
2/10/2007 19:00	67.79	67.79	67.79	67.79	67.79	67.79	67.79	67.79	67.79	67.79	67.79	67.79
2/10/2007 20:00	72.63	72.63	72.63	72.63	72.63	72.63	72.63	72.63	72.63	72.63	72.63	72.63
2/10/2007 21:00	71.64	71.64	71.64	71.64	71.64	71.64	71.64	71.64	71.64	71.64	71.64	71.64
2/10/2007 22:00	70.86	70.86	70.86	70.86	70.86	70.86	70.86	70.86	70.86	70.86	70.86	70.86
2/10/2007 23:00	68.49	68.49	68.49	68.49	68.49	68.49	68.49	68.49	68.49	68.49	68.49	68.49
2/11/2007 0:00	52.02	52.02	52.02	52.02	52.02	52.02	52.02	52.02	52.02	52.02	52.02	52.02

Table B:
Average Prices by Hour for
Load Settlement Locations and SPP-Wide

Hour Ending CPT	SPP	CSWS	EDE	GRDA	KACY	KCPL	OKGE	SECI	SPS	WFEC	WPEK	WR
2/11/2007 1:00	55.16	55.16	55.16	55.16	55.16	55.16	55.16	55.16	55.16	55.16	55.16	55.16
2/11/2007 2:00	59.45	59.45	59.45	59.45	59.45	59.45	59.45	59.45	59.45	59.45	59.45	59.45
2/11/2007 3:00	57.77	57.77	57.77	57.77	57.77	57.77	57.77	57.77	57.77	57.77	57.77	57.77
2/11/2007 4:00	49.67	49.67	49.67	49.67	49.67	49.67	49.67	49.67	49.67	49.67	49.67	49.67
2/11/2007 5:00	52.42	52.42	52.42	52.42	52.42	52.42	52.42	52.42	52.42	52.42	52.42	52.42
2/11/2007 6:00	66.20	66.20	66.20	66.20	66.20	66.20	66.20	66.20	66.20	66.20	66.20	66.20
2/11/2007 7:00	60.84	60.84	60.84	60.84	60.84	60.84	60.84	60.84	60.84	60.84	60.84	60.84
2/11/2007 8:00	65.21	65.21	65.21	65.21	65.21	65.21	65.21	65.21	65.21	65.21	65.21	65.21
2/11/2007 9:00	66.33	66.33	66.33	66.33	66.33	66.33	66.33	66.33	66.33	66.33	66.33	66.33
2/11/2007 10:00	64.26	64.26	64.26	64.26	64.26	64.26	64.26	64.26	64.26	64.26	64.26	64.26
2/11/2007 11:00	55.87	55.87	55.87	55.87	55.87	55.87	55.87	55.87	55.87	55.87	55.87	55.87
2/11/2007 12:00	47.95	47.95	47.95	47.95	47.95	47.95	47.95	47.95	47.95	47.95	47.95	47.95
2/11/2007 13:00	46.51	46.51	46.51	46.51	46.51	46.51	46.51	46.51	46.51	46.51	46.51	46.51
2/11/2007 14:00	30.22	30.22	30.22	30.22	30.22	30.22	30.22	30.22	30.22	30.22	30.22	30.22
2/11/2007 15:00	16.77	16.77	16.77	16.77	16.77	16.77	16.77	16.77	16.77	16.77	16.77	16.77
2/11/2007 16:00	25.46	25.46	25.46	25.46	25.46	25.46	25.46	25.46	25.46	25.46	25.46	25.46
2/11/2007 17:00	40.80	40.80	40.80	40.80	40.80	40.80	40.80	40.80	40.80	40.80	40.80	40.80
2/11/2007 18:00	50.76	50.76	50.76	50.76	50.76	50.76	50.76	50.76	50.76	50.76	50.76	50.76
2/11/2007 19:00	65.14	65.14	65.14	65.14	65.14	65.14	65.14	65.14	65.14	65.14	65.14	65.14
2/11/2007 20:00	63.15	64.86	63.92	60.81	62.70	62.71	62.31	62.52	62.37	62.49	62.53	62.70
2/11/2007 21:00	57.18	57.18	57.18	57.18	57.18	57.18	57.18	57.18	57.18	57.18	57.18	57.18
2/11/2007 22:00	43.72	43.72	43.72	43.72	43.72	43.72	43.72	43.72	43.72	43.72	43.72	43.72
2/11/2007 23:00	26.55	26.55	26.55	26.55	26.55	26.55	26.55	26.55	26.55	26.55	26.55	26.55
2/12/2007 0:00	15.78	15.14	15.14	15.14	15.12	15.12	15.14	15.14	19.24	15.14	15.13	15.12

Table B:
Average Prices by Hour for
Load Settlement Locations and SPP-Wide

Hour Ending CPT	SPP	CSWS	EDE	GRDA	KACY	KCPL	OKGE	SECI	SPS	WFEC	WPEK	WR
2/12/2007 1:00	19.25	19.25	19.25	19.25	19.25	19.25	19.25	19.25	19.25	19.25	19.25	19.25
2/12/2007 2:00	13.10	13.10	13.10	13.10	13.10	13.10	13.10	13.10	13.10	13.10	13.10	13.10
2/12/2007 3:00	13.85	13.85	13.85	13.85	13.85	13.85	13.85	13.85	13.85	13.85	13.85	13.85
2/12/2007 4:00	14.51	14.51	14.51	14.51	14.51	14.51	14.51	14.51	14.51	14.51	14.51	14.51
2/12/2007 5:00	17.33	17.33	17.33	17.33	17.33	17.33	17.33	17.33	17.33	17.33	17.33	17.33
2/12/2007 6:00	33.24	33.24	33.24	33.24	33.24	33.24	33.24	33.24	33.24	33.24	33.24	33.24
2/12/2007 7:00	57.25	57.25	57.25	57.25	57.25	57.25	57.25	57.25	57.25	57.25	57.25	57.25
2/12/2007 8:00	60.52	60.30	60.30	60.31	60.30	60.30	60.31	60.30	61.80	60.30	60.30	60.30
2/12/2007 9:00	52.70	52.05	52.05	52.05	52.04	52.04	52.06	52.05	56.50	52.05	52.04	52.04
2/12/2007 10:00	62.09	62.09	62.09	62.09	62.09	62.09	62.09	62.09	62.09	62.09	62.09	62.09
2/12/2007 11:00	54.97	54.97	54.97	54.97	54.97	54.97	54.97	54.97	54.97	54.97	54.97	54.97
2/12/2007 12:00	47.18	47.18	47.18	47.18	47.18	47.18	47.18	47.18	47.18	47.18	47.18	47.18
2/12/2007 13:00	54.12	54.12	54.12	54.12	54.12	54.12	54.12	54.12	54.12	54.12	54.12	54.12
2/12/2007 14:00	45.65	45.65	45.65	45.65	45.65	45.65	45.65	45.65	45.65	45.65	45.65	45.65
2/12/2007 15:00	54.61	54.61	54.61	54.61	54.61	54.61	54.61	54.61	54.61	54.61	54.61	54.61
2/12/2007 16:00	64.98	64.98	64.98	64.98	64.98	64.98	64.98	64.98	64.98	64.98	64.98	64.98
2/12/2007 17:00	64.14	64.14	64.14	64.14	64.14	64.14	64.14	64.14	64.14	64.14	64.14	64.14
2/12/2007 18:00	69.00	77.93	72.24	57.46	66.58	66.60	65.04	65.79	65.12	65.84	65.78	66.34
2/12/2007 19:00	63.46	66.73	64.68	59.22	62.58	62.59	62.02	62.29	62.05	62.31	62.29	62.49
2/12/2007 20:00	58.20	57.37	57.36	57.37	57.35	57.35	57.38	57.37	63.15	57.37	57.36	57.35
2/12/2007 21:00	59.82	58.10	58.09	58.11	58.06	58.06	58.12	58.09	69.83	58.11	58.08	58.06
2/12/2007 22:00	36.54	30.86	30.81	30.88	30.71	30.71	30.92	30.82	68.54	30.88	30.78	30.73
2/12/2007 23:00	46.20	42.62	42.60	42.62	42.52	42.52	42.64	42.60	65.57	42.62	42.57	42.54
2/13/2007 0:00	22.60	16.91	16.89	16.91	16.76	16.77	16.95	16.88	52.34	16.92	16.84	16.79

Table B:
Average Prices by Hour for
Load Settlement Locations and SPP-Wide

Hour Ending CPT	SPP	CSWS	EDE	GRDA	KACY	KCPL	OKGE	SECI	SPS	WFEC	WPEK	WR
2/13/2007 1:00	14.65	14.19	14.18	14.19	14.17	14.17	14.19	14.18	17.04	14.19	14.18	14.18
2/13/2007 2:00	15.51	14.26	14.26	14.26	14.23	14.23	14.27	14.26	21.87	14.26	14.24	14.23
2/13/2007 3:00	15.08	14.30	14.30	14.30	14.28	14.28	14.31	14.30	19.06	14.30	14.29	14.28
2/13/2007 4:00	16.08	14.47	14.46	14.47	14.43	14.43	14.48	14.46	24.32	14.47	14.45	14.44
2/13/2007 5:00	17.18	16.15	16.14	16.15	16.12	16.12	16.16	16.14	22.51	16.15	16.13	16.13
2/13/2007 6:00	30.95	29.99	29.98	30.00	29.97	29.97	30.00	29.99	36.09	30.00	29.98	29.97
2/13/2007 7:00	44.99	41.32	41.30	41.34	41.23	41.23	41.36	41.30	65.60	41.34	41.27	41.25
2/13/2007 8:00	66.56	87.57	73.35	34.97	58.72	58.77	54.44	56.66	67.46	56.76	56.63	58.08
2/13/2007 9:00	78.73	117.27	93.73	28.79	68.81	68.90	61.49	65.27	62.36	65.40	65.24	67.72
2/13/2007 10:00	65.21	70.10	66.47	56.34	62.56	62.57	61.45	62.02	68.97	62.07	62.01	62.39
2/13/2007 11:00	70.22	71.35	71.11	60.67	81.96	82.78	63.45	65.44	69.23	65.01	59.66	72.09
2/13/2007 12:00	75.65	97.95	84.20	45.28	69.13	69.18	64.82	67.05	68.44	67.22	67.03	68.50
2/13/2007 13:00	114.32	200.86	158.29	17.72	93.71	97.08	68.50	81.30	70.87	79.14	82.79	91.39
2/13/2007 14:00	103.64	175.69	141.60	26.54	86.30	89.96	64.23	75.75	66.33	73.25	77.42	84.88
2/13/2007 15:00	108.10	187.81	149.71	20.10	88.38	92.08	64.76	77.17	67.02	74.77	78.85	86.74
2/13/2007 16:00	85.64	139.18	111.91	21.29	72.74	73.36	56.15	63.93	62.95	62.26	64.71	69.62
2/13/2007 17:00	112.86	152.17	121.26	12.21	74.03	73.97	51.12	61.14	244.42	58.54	62.33	68.40
2/13/2007 18:00	109.38	187.00	151.16	20.76	95.30	95.21	65.15	78.16	67.53	74.35	79.81	87.87
2/13/2007 19:00	131.30	175.02	160.19	48.11	189.90	193.69	78.32	101.11	85.09	90.84	62.93	134.40
2/13/2007 20:00	117.13	201.12	163.06	16.83	101.12	101.06	69.62	83.01	71.85	79.76	85.21	93.68
2/13/2007 21:00	118.56	205.04	163.62	16.23	100.80	100.74	70.64	83.28	73.02	80.65	85.32	93.50
2/13/2007 22:00	103.36	190.48	132.36	8.40	76.96	76.99	61.82	67.04	64.83	69.50	67.29	72.05
2/13/2007 23:00	81.45	109.15	88.16	53.02	71.37	71.38	67.26	68.39	74.98	69.56	68.35	69.60
2/14/2007 0:00	50.38	47.99	47.96	47.98	47.92	47.93	47.98	47.98	64.34	47.98	47.95	47.94

Table B:
Average Prices by Hour for
Load Settlement Locations and SPP-Wide

Hour Ending CPT	SPP	CSWS	EDE	GRDA	KACY	KCPL	OKGE	SECI	SPS	WFEC	WPEK	WR
2/14/2007 1:00	55.47	54.01	53.99	54.00	53.97	53.97	54.00	54.00	63.95	54.01	53.99	53.98
2/14/2007 2:00	61.37	62.70	59.56	60.08	59.34	59.34	60.56	59.88	64.55	60.46	59.70	59.43
2/14/2007 3:00	63.21	85.60	48.15	54.31	45.59	45.64	60.01	51.91	63.79	58.91	49.85	46.62
2/14/2007 4:00	63.88	77.42	54.48	58.25	52.92	52.95	61.76	56.79	65.17	61.08	55.53	53.55
2/14/2007 5:00	70.17	92.51	59.43	57.91	54.62	54.68	66.01	59.54	67.92	65.42	57.87	55.38
2/14/2007 6:00	120.10	173.90	147.00	51.57	106.97	107.04	91.63	98.21	92.98	97.67	99.00	103.57
2/14/2007 7:00	158.93	202.05	188.73	80.18	207.63	211.09	110.48	130.19	116.00	121.63	99.47	159.80
2/14/2007 8:00	125.95	208.05	168.26	24.88	123.88	124.77	73.89	88.15	77.78	84.87	80.93	104.33
2/14/2007 9:00	117.08	211.68	155.30	13.04	91.61	91.59	68.41	76.85	71.82	77.89	77.65	84.79
2/14/2007 10:00	122.23	204.17	169.64	17.00	118.65	118.79	70.41	85.79	73.44	81.85	80.97	102.27
2/14/2007 11:00	117.08	201.26	163.83	14.06	100.57	100.30	68.90	82.64	71.63	79.49	83.05	93.20
2/14/2007 12:00	102.68	167.44	140.11	27.34	91.62	90.86	63.38	75.18	69.88	71.92	75.89	84.56
2/14/2007 13:00	80.95	120.84	105.77	36.41	74.75	74.42	51.78	60.78	68.93	57.67	62.84	68.67
2/14/2007 14:00	77.92	115.09	100.91	36.93	72.36	72.20	51.09	59.49	66.18	56.49	61.39	66.75
2/14/2007 15:00	81.78	122.41	106.31	37.85	75.86	75.70	52.89	61.98	68.23	58.76	64.04	69.81
2/14/2007 16:00	79.49	120.15	103.47	34.65	72.97	72.82	50.02	59.00	68.45	55.79	61.08	66.90
2/14/2007 17:00	87.66	141.42	118.01	26.70	78.49	78.35	51.72	62.38	68.11	58.99	64.58	71.62
2/14/2007 18:00	112.73	192.70	155.30	19.79	98.46	98.31	66.78	81.25	69.70	76.56	82.20	90.83
2/14/2007 19:00	124.42	182.25	163.64	35.86	168.84	171.99	65.67	96.57	76.12	78.99	60.04	121.57
2/14/2007 20:00	107.42	178.16	153.15	14.21	92.50	92.44	65.83	78.28	73.72	75.38	78.57	86.16
2/14/2007 21:00	105.38	172.89	151.65	14.57	91.17	91.15	66.32	77.82	72.17	75.51	78.01	85.22
2/14/2007 22:00	100.35	173.19	142.48	10.34	84.93	84.79	55.66	69.00	70.87	65.21	69.60	77.57
2/14/2007 23:00	92.09	145.33	124.11	30.06	81.30	81.26	59.96	71.37	66.34	67.49	72.43	77.45
2/15/2007 0:00	69.67	79.81	76.18	58.72	67.03	67.03	62.58	65.36	66.74	64.30	65.85	66.60

Table B:
Average Prices by Hour for
Load Settlement Locations and SPP-Wide

Hour Ending CPT	SPP	CSWS	EDE	GRDA	KACY	KCPL	OKGE	SECI	SPS	WFEC	WPEK	WR
2/15/2007 1:00	118.72	73.87	71.99	64.52	66.99	67.04	66.58	67.41	398.49	67.29	66.85	67.21
2/15/2007 2:00	86.54	124.35	35.48	33.90	86.41	85.52	68.44	79.79	68.60	75.93	76.91	82.67
2/15/2007 3:00	86.48	118.77	94.38	51.85	81.48	81.30	67.51	76.19	68.95	72.96	76.90	79.72
2/15/2007 4:00	84.59	116.78	93.41	49.96	79.56	79.39	65.49	74.24	66.99	71.01	75.01	77.82
2/15/2007 5:00	109.04	177.87	131.97	23.80	98.37	98.03	69.94	84.57	72.51	79.99	84.40	92.20
2/15/2007 6:00	122.57	191.69	150.65	26.44	133.11	134.17	73.88	94.95	78.83	85.43	79.88	109.87
2/15/2007 7:00	131.82	161.03	136.80	58.69	193.97	198.18	87.33	116.29	97.60	98.97	66.89	140.25
2/15/2007 8:00	175.49	211.96	183.77	43.79	341.57	352.36	82.64	149.68	106.58	106.87	25.13	208.48
2/15/2007 9:00	112.18	181.90	142.66	30.73	102.66	102.47	69.78	84.78	73.61	79.34	85.11	94.37
2/15/2007 10:00	140.18	184.65	173.90	42.88	227.57	234.19	72.24	114.60	87.18	88.24	46.17	151.45
2/15/2007 11:00	114.83	180.12	148.80	38.13	102.68	102.76	76.28	89.11	78.86	84.56	89.75	97.23
2/15/2007 12:00	86.24	123.60	97.49	38.29	78.38	78.34	62.28	70.20	74.17	67.57	70.17	74.94
2/15/2007 13:00	64.57	70.80	63.21	50.89	60.57	60.58	58.84	59.87	72.44	59.82	59.55	60.32
2/15/2007 14:00	58.43	60.52	24.82	44.84	57.99	57.64	55.79	57.33	71.74	57.27	55.36	57.01
2/15/2007 15:00	63.60	62.61	60.37	61.87	62.55	62.53	62.48	62.54	70.86	62.55	62.41	62.50
2/15/2007 16:00	63.92	70.88	64.36	49.94	59.78	59.80	58.15	59.09	70.24	59.11	58.82	59.51
2/15/2007 17:00	115.68	179.20	115.65	31.97	104.35	104.08	81.77	93.07	82.88	90.03	91.26	98.77
2/15/2007 18:00	151.00	190.90	161.45	43.59	259.67	266.95	79.58	125.51	95.35	97.02	39.37	166.35
2/15/2007 19:00	192.36	199.33	181.97	110.26	338.97	347.48	126.84	175.26	144.07	143.95	68.50	224.70
2/15/2007 20:00	153.68	185.16	149.93	48.08	272.32	279.33	84.86	131.93	101.11	102.54	39.26	173.65
2/15/2007 21:00	156.83	186.61	157.68	51.85	275.81	283.08	89.27	135.51	105.55	106.38	41.84	176.97
2/15/2007 22:00	132.64	193.80	140.15	41.56	145.46	146.41	89.05	108.36	93.10	99.76	90.82	121.96
2/15/2007 23:00	202.06	231.77	219.69	168.82	197.82	197.76	183.41	189.77	184.53	187.29	190.51	194.10
2/16/2007 0:00	72.11	89.14	82.90	54.36	70.26	70.21	60.91	64.94	61.64	63.22	65.62	67.77

Table B:
Average Prices by Hour for
Load Settlement Locations and SPP-Wide

Hour Ending CPT	SPP	CSWS	EDE	GRDA	KACY	KCPL	OKGE	SECI	SPS	WFEC	WPEK	WR
2/16/2007 1:00	87.82	112.79	95.98	60.06	85.82	85.67	71.79	78.04	72.70	75.39	78.72	82.17
2/16/2007 2:00	73.18	81.99	73.40	62.69	72.75	72.67	67.64	69.98	67.90	69.01	70.09	71.43
2/16/2007 3:00	78.15	94.68	81.94	58.72	77.17	77.05	67.38	71.79	67.97	69.91	72.24	74.73
2/16/2007 4:00	89.07	120.30	99.58	52.76	86.95	86.78	68.53	76.66	69.60	73.30	77.61	82.23
2/16/2007 5:00	118.12	175.70	135.07	43.92	110.52	110.26	82.76	95.54	84.29	91.14	96.53	103.90
2/16/2007 6:00	118.87	192.96	148.22	19.64	106.00	105.81	73.36	88.53	75.24	83.61	89.89	98.57
2/16/2007 7:00	151.87	181.05	183.43	49.93	287.40	296.05	74.86	124.30	92.36	94.01	23.63	172.70
2/16/2007 8:00	161.18	181.47	202.71	21.28	306.73	314.13	78.37	149.81	103.89	101.72	57.31	201.14
2/16/2007 9:00	118.55	167.82	172.73	3.38	127.36	127.51	69.39	105.36	81.95	83.35	112.44	122.64
2/16/2007 10:00	134.77	199.14	193.68	(2.93)	142.04	142.19	75.96	115.33	90.22	93.01	125.03	135.93
2/16/2007 11:00	95.03	127.96	126.56	38.07	96.15	96.27	65.74	84.79	72.29	73.55	89.73	94.95
2/16/2007 12:00	60.46	59.77	59.76	59.77	59.74	59.74	59.78	59.76	64.93	59.77	59.75	59.75
2/16/2007 13:00	51.85	49.76	49.73	49.76	49.70	49.70	49.79	49.74	65.35	49.76	49.73	49.72
2/16/2007 14:00	47.51	45.00	44.96	44.99	44.92	44.92	45.03	44.97	63.77	44.99	44.95	44.93
2/16/2007 15:00	46.89	44.16	44.12	44.16	44.07	44.08	44.20	44.14	64.62	44.16	44.11	44.09
2/16/2007 16:00	22.94	22.40	22.39	22.40	22.38	22.38	22.41	22.39	26.44	22.40	22.39	22.39
2/16/2007 17:00	51.94	48.19	51.81	44.73	72.95	74.35	44.38	50.93	47.01	46.21	36.66	57.42
2/16/2007 18:00	83.35	67.40	82.93	52.16	173.97	180.08	50.79	79.01	61.98	58.62	17.84	106.93
2/16/2007 19:00	125.10	98.13	126.05	69.83	293.39	303.99	66.90	91.95	74.69	81.35	(18.17)	176.44
2/16/2007 20:00	90.59	76.32	91.77	60.48	185.54	191.40	58.55	66.97	60.43	66.65	16.73	120.96
2/16/2007 21:00	45.75	44.90	44.89	44.91	44.87	44.88	44.91	44.89	51.23	44.90	44.89	44.88
2/16/2007 22:00	94.32	106.07	105.19	62.89	96.22	96.22	82.86	90.50	89.09	86.33	91.01	93.57
2/16/2007 23:00	48.17	48.17	48.17	48.17	48.17	48.17	48.17	48.17	48.17	48.17	48.17	48.17
2/17/2007 0:00	42.86	42.86	42.86	42.86	42.86	42.86	42.86	42.86	42.86	42.86	42.86	42.86

Table B:
Average Prices by Hour for
Load Settlement Locations and SPP-Wide

Hour Ending CPT	SPP	CSWS	EDE	GRDA	KACY	KCPL	OKGE	SECI	SPS	WFEC	WPEK	WR
2/17/2007 1:00	58.58	58.58	58.58	58.58	58.58	58.58	58.58	58.58	58.58	58.58	58.58	58.58
2/17/2007 2:00	65.50	67.92	68.20	68.14	69.45	68.97	68.12	40.71	54.10	67.48	6.28	72.72
2/17/2007 3:00	64.06	85.04	68.56	64.79	72.04	70.97	59.51	3.30	28.54	56.60	(70.69)	78.20
2/17/2007 4:00	52.26	53.84	52.77	53.55	54.83	54.51	53.88	36.91	45.19	53.55	16.26	56.81
2/17/2007 5:00	60.79	61.02	57.67	59.86	61.10	61.06	60.80	60.97	60.75	60.95	60.84	61.00
2/17/2007 6:00	48.38	48.38	48.36	48.37	48.38	48.38	48.38	48.38	48.38	48.38	48.38	48.38
2/17/2007 7:00	55.78	54.67	54.63	52.68	64.27	64.79	52.94	55.05	53.66	53.71	50.82	58.24
2/17/2007 8:00	63.76	62.80	63.09	61.21	71.05	71.47	61.34	63.13	61.96	61.98	59.50	65.86
2/17/2007 9:00	143.16	145.86	168.21	36.15	297.77	306.50	70.68	121.64	89.69	90.18	48.21	185.07
2/17/2007 10:00	76.59	92.90	93.29	36.77	85.51	85.90	59.18	70.89	63.65	64.27	68.59	77.86
2/17/2007 11:00	70.64	78.60	80.19	45.17	85.83	86.67	57.38	66.32	60.72	61.06	60.01	74.20
2/17/2007 12:00	48.49	49.32	49.22	46.56	48.66	48.66	47.78	48.26	47.98	48.01	48.29	48.47
2/17/2007 13:00	40.22	40.22	40.22	40.22	40.22	40.22	40.22	40.22	40.22	40.22	40.22	40.22
2/17/2007 14:00	26.06	26.06	26.06	26.06	26.06	26.06	26.06	26.06	26.06	26.06	26.06	26.06
2/17/2007 15:00	25.34	19.48	19.17	19.37	15.73	15.87	21.21	(12.91)	68.45	20.23	2.03	15.10
2/17/2007 16:00	17.63	16.18	16.12	16.16	15.41	15.43	16.54	9.51	27.91	16.34	12.59	15.28
2/17/2007 17:00	19.06	18.60	18.60	18.61	18.55	18.56	18.63	18.26	21.76	18.61	18.42	18.55
2/17/2007 18:00	48.43	48.22	48.21	48.21	48.08	48.08	48.28	47.02	50.04	48.24	47.58	48.06
2/17/2007 19:00	90.05	123.83	119.65	21.49	93.87	93.92	61.13	79.94	68.46	69.60	81.59	88.55
2/17/2007 20:00	100.58	115.37	122.07	46.96	153.53	156.86	63.19	88.02	72.33	72.83	63.81	114.14
2/17/2007 21:00	62.87	63.36	63.70	59.99	65.52	65.67	61.25	62.37	61.69	61.72	61.20	63.55
2/17/2007 22:00	74.42	85.31	81.71	63.30	73.47	73.47	67.28	69.91	67.86	68.75	70.02	71.69
2/17/2007 23:00	63.49	63.49	63.49	63.49	63.49	63.49	63.49	63.49	63.49	63.49	63.49	63.49
2/18/2007 0:00	56.41	56.41	56.41	56.41	56.41	56.41	56.41	56.41	56.41	56.41	56.41	56.41

Table B:
Average Prices by Hour for
Load Settlement Locations and SPP-Wide

Hour Ending CPT	SPP	CSWS	EDE	GRDA	KACY	KCPL	OKGE	SECI	SPS	WFEC	WPEK	WR
2/18/2007 1:00	49.09	49.09	49.09	49.09	49.09	49.09	49.09	49.09	49.09	49.09	49.09	49.09
2/18/2007 2:00	58.52	58.52	58.52	58.52	58.52	58.52	58.52	58.52	58.52	58.52	58.52	58.52
2/18/2007 3:00	46.18	46.18	46.18	46.18	46.18	46.18	46.18	46.18	46.18	46.18	46.18	46.18
2/18/2007 4:00	51.27	59.49	60.46	60.29	60.55	63.11	60.17	(34.07)	12.60	58.07	(138.58)	75.71
2/18/2007 5:00	54.18	56.86	57.17	57.12	57.20	58.04	57.08	26.12	41.46	56.38	(8.25)	62.18
2/18/2007 6:00	47.00	55.80	56.85	56.67	56.95	59.75	56.55	(46.46)	4.61	54.25	(160.03)	73.50
2/18/2007 7:00	57.71	62.66	63.26	63.16	63.31	64.92	63.08	4.53	33.46	61.78	(59.83)	72.74
2/18/2007 8:00	46.71	49.23	49.53	49.48	49.57	50.39	49.45	19.33	34.27	48.78	(12.91)	54.38
2/18/2007 9:00	47.22	47.49	47.52	47.52	47.52	47.61	47.51	44.28	45.89	47.44	40.90	48.04
2/18/2007 10:00	41.53	41.53	41.53	41.53	41.53	41.53	41.53	41.53	41.53	41.53	41.53	41.53
2/18/2007 11:00	18.12	18.09	18.09	18.09	18.07	18.07	18.09	17.93	18.33	18.09	18.01	18.07
2/18/2007 12:00	23.56	23.56	23.56	23.56	23.56	23.56	23.56	23.56	23.56	23.56	23.56	23.56
2/18/2007 13:00	17.55	17.55	17.55	17.55	17.55	17.55	17.55	17.55	17.55	17.55	17.55	17.55
2/18/2007 14:00	14.99	14.99	14.99	14.99	14.99	14.99	14.99	14.99	14.99	14.99	14.99	14.99
2/18/2007 15:00	13.72	13.72	13.72	13.72	13.72	13.72	13.72	13.72	13.72	13.72	13.72	13.72
2/18/2007 16:00	13.91	13.91	13.91	13.91	13.91	13.91	13.91	13.91	13.91	13.91	13.91	13.91
2/18/2007 17:00	14.04	14.04	14.04	14.04	14.04	14.04	14.04	14.04	14.04	14.04	14.04	14.04
2/18/2007 18:00	12.15	14.67	14.98	14.92	15.00	15.77	14.89	(12.91)	0.92	14.26	(43.36)	19.50
2/18/2007 19:00	41.35	49.09	50.05	49.88	50.13	52.64	49.79	(39.69)	4.64	47.76	(135.95)	64.65
2/18/2007 20:00	60.86	67.05	67.82	67.69	67.89	69.89	67.61	(3.62)	31.55	66.00	(79.16)	79.47
2/18/2007 21:00	41.84	44.67	45.02	44.96	45.04	45.95	44.93	12.36	28.56	44.19	(21.51)	50.32
2/18/2007 22:00	59.83	65.76	66.49	66.36	66.50	68.41	66.31	(2.48)	32.53	64.75	(73.67)	77.57
2/18/2007 23:00	61.79	66.44	67.06	66.96	66.66	68.36	67.13	1.39	42.80	65.64	(61.76)	76.47
2/19/2007 0:00	33.04	34.68	35.03	34.98	34.09	35.15	35.44	(12.47)	29.97	34.34	(49.89)	40.10

Table B:
Average Prices by Hour for
Load Settlement Locations and SPP-Wide

Hour Ending CPT	SPP	CSWS	EDE	GRDA	KACY	KCPL	OKGE	SECI	SPS	WFEC	WPEK	WR
2/19/2007 1:00	26.98	27.66	27.81	27.79	27.41	27.84	27.98	8.09	25.80	27.52	(7.94)	29.89
2/19/2007 2:00	36.25	41.28	41.85	41.75	41.89	43.31	41.69	(12.26)	14.70	40.51	(73.41)	50.62
2/19/2007 3:00	32.56	35.39	35.71	35.66	35.74	36.53	35.62	5.20	20.40	34.95	(29.43)	40.62
2/19/2007 4:00	25.97	30.69	31.22	31.13	31.26	32.58	31.07	(19.23)	5.88	29.97	(78.62)	39.34
2/19/2007 5:00	52.85	58.56	59.20	59.09	59.25	60.86	59.02	(2.09)	28.49	57.68	(75.99)	69.05
2/19/2007 6:00	39.41	40.64	40.78	40.75	40.79	41.15	40.74	27.23	34.02	40.44	10.39	42.94
2/19/2007 7:00	70.39	71.14	71.22	71.20	71.23	71.45	71.20	62.81	66.99	71.01	52.30	72.57
2/19/2007 8:00	62.08	62.07	62.07	62.07	62.06	62.06	62.07	62.01	62.16	62.07	62.03	62.06
2/19/2007 9:00	65.28	65.09	65.31	64.83	66.81	66.89	64.76	65.28	64.98	64.91	64.23	65.63
2/19/2007 10:00	61.00	61.00	61.00	61.00	61.00	61.00	61.00	61.00	61.00	61.00	61.00	61.00
2/19/2007 11:00	59.32	59.32	59.32	59.32	59.32	59.32	59.32	59.32	59.32	59.32	59.32	59.32
2/19/2007 12:00	55.73	54.75	55.83	53.86	62.13	62.53	53.56	55.79	54.48	54.19	51.29	57.19
2/19/2007 13:00	26.12	26.12	26.12	26.12	26.12	26.12	26.12	26.12	26.12	26.12	26.12	26.12
2/19/2007 14:00	31.40	31.40	31.40	31.40	31.40	31.40	31.40	31.40	31.40	31.40	31.40	31.40
2/19/2007 15:00	18.26	18.07	18.07	18.07	18.07	18.07	18.08	18.07	19.27	18.07	18.07	18.07
2/19/2007 16:00	21.22	20.42	20.40	20.41	20.20	20.20	20.52	18.59	26.09	20.46	19.44	20.16
2/19/2007 17:00	22.52	22.22	22.21	22.21	22.08	22.08	22.28	21.05	24.51	22.24	21.59	22.06
2/19/2007 18:00	25.54	25.27	25.26	25.27	25.18	25.18	25.31	24.50	27.24	25.28	24.85	25.16
2/19/2007 19:00	53.83	53.83	53.83	53.83	53.83	53.83	53.83	53.83	53.83	53.83	53.83	53.83
2/19/2007 20:00	58.49	58.49	58.49	58.49	58.49	58.49	58.49	58.49	58.49	58.49	58.49	58.49
2/19/2007 21:00	39.18	38.36	38.31	38.33	37.84	37.86	38.57	33.96	45.13	38.43	36.02	37.74
2/19/2007 22:00	38.06	37.97	37.97	37.97	37.92	37.92	38.00	37.51	38.69	37.98	37.73	37.91
2/19/2007 23:00	44.95	44.57	44.45	44.57	44.28	44.29	44.65	42.42	47.74	44.58	43.38	44.23
2/20/2007 0:00	20.75	20.69	20.67	20.69	20.64	20.64	20.70	20.34	21.20	20.69	20.50	20.63

Table B:
Average Prices by Hour for
Load Settlement Locations and SPP-Wide

Hour Ending CPT	SPP	CSWS	EDE	GRDA	KACY	KCPL	OKGE	SECI	SPS	WFEC	WPEK	WR
2/20/2007 1:00	15.67	14.47	14.45	14.46	14.44	14.43	14.47	14.46	21.73	14.47	14.46	14.44
2/20/2007 2:00	15.92	14.73	14.71	14.73	14.71	14.69	14.74	14.62	21.86	14.74	14.66	14.69
2/20/2007 3:00	15.31	14.66	14.65	14.65	14.65	14.64	14.66	14.65	18.56	14.66	14.65	14.64
2/20/2007 4:00	15.28	14.64	14.63	14.64	14.64	14.63	14.65	14.64	18.41	14.65	14.64	14.63
2/20/2007 5:00	15.50	14.87	14.86	14.86	14.86	14.85	14.87	14.87	18.66	14.87	14.86	14.85
2/20/2007 6:00	22.24	21.73	21.73	21.74	21.72	21.72	21.74	21.73	24.86	21.74	21.73	21.73
2/20/2007 7:00	48.88	47.49	47.49	47.51	47.47	47.47	47.52	47.50	56.40	47.51	47.49	47.48
2/20/2007 8:00	82.32	82.17	82.17	82.17	82.17	82.17	82.17	82.17	83.12	82.17	82.17	82.17
2/20/2007 9:00	41.93	38.40	38.39	38.44	38.33	38.33	38.46	38.40	61.07	38.43	38.37	38.34
2/20/2007 10:00	32.44	27.52	27.51	27.58	27.43	27.43	27.61	27.52	58.96	27.57	27.49	27.45
2/20/2007 11:00	27.69	23.03	23.02	23.08	22.94	22.94	23.10	23.03	52.92	23.07	23.00	22.96
2/20/2007 12:00	38.21	34.42	34.42	34.46	34.34	34.35	34.48	34.42	58.76	34.46	34.39	34.36
2/20/2007 13:00	31.40	26.74	26.74	26.79	26.64	26.65	26.81	26.74	56.80	26.78	26.71	26.67
2/20/2007 14:00	28.28	22.97	22.97	23.03	22.87	22.87	23.06	22.98	57.21	23.03	22.94	22.90
2/20/2007 15:00	26.48	21.10	21.10	21.15	20.99	21.00	21.19	21.10	55.68	21.15	21.06	21.02
2/20/2007 16:00	34.24	30.54	30.54	30.58	30.47	30.47	30.60	30.55	54.32	30.58	30.52	30.49
2/20/2007 17:00	33.60	29.92	29.92	29.97	29.85	29.85	29.99	29.93	53.42	29.96	29.90	29.87
2/20/2007 18:00	30.37	26.52	26.52	26.57	26.44	26.45	26.59	26.52	51.50	26.56	26.49	26.46
2/20/2007 19:00	57.28	57.09	57.09	57.10	57.09	57.09	57.10	57.09	58.34	57.10	57.09	57.09
2/20/2007 20:00	57.25	56.14	56.14	56.15	56.11	56.11	56.16	56.14	63.45	56.15	56.13	56.12
2/20/2007 21:00	52.15	50.13	50.13	50.15	50.09	50.09	50.16	50.13	63.29	50.15	50.11	50.10
2/20/2007 22:00	42.07	38.25	38.24	38.30	38.17	38.17	38.31	38.25	62.66	38.28	38.22	38.19
2/20/2007 23:00	46.55	44.60	44.57	44.59	44.54	44.54	44.61	44.59	56.81	44.60	44.58	44.56
2/21/2007 0:00	18.27	14.74	14.68	14.71	14.63	14.63	14.75	14.72	36.17	14.73	14.69	14.66

Table B:
Average Prices by Hour for
Load Settlement Locations and SPP-Wide

Hour Ending CPT	SPP	CSWS	EDE	GRDA	KACY	KCPL	OKGE	SECI	SPS	WFEC	WPEK	WR
2/21/2007 1:00	23.48	23.41	23.41	23.41	23.40	23.40	23.41	23.41	23.85	23.41	23.41	23.40
2/21/2007 2:00	23.32	23.29	23.28	23.29	23.28	23.28	23.29	23.27	23.50	23.28	23.28	23.28
2/21/2007 3:00	21.26	20.87	20.87	20.87	20.86	20.86	20.87	20.87	23.17	20.87	20.87	20.86
2/21/2007 4:00	20.17	19.53	19.52	19.53	19.51	19.51	19.53	19.53	23.35	19.53	19.52	19.52
2/21/2007 5:00	21.31	20.36	20.36	20.37	20.35	20.35	20.38	20.36	26.01	20.37	20.36	20.35
2/21/2007 6:00	50.86	50.86	50.86	50.86	50.86	50.86	50.86	50.86	50.86	50.86	50.86	50.86
2/21/2007 7:00	72.29	72.29	72.29	72.29	72.29	72.29	72.29	72.29	72.29	72.29	72.29	72.29
2/21/2007 8:00	56.22	54.67	54.67	54.69	54.64	54.64	54.70	54.67	64.76	54.68	54.66	54.65
2/21/2007 9:00	50.68	48.01	48.00	48.03	47.95	47.95	48.05	48.00	65.41	48.03	47.98	47.96
2/21/2007 10:00	47.43	44.32	44.30	44.35	44.24	44.25	44.37	44.31	64.66	44.34	44.29	44.26
2/21/2007 11:00	57.49	55.70	55.69	55.72	55.66	55.66	55.73	55.70	67.42	55.71	55.68	55.67
2/21/2007 12:00	27.92	21.45	21.43	21.53	21.31	21.31	21.56	21.44	63.80	21.50	21.39	21.34
2/21/2007 13:00	31.48	25.99	25.97	26.05	25.87	25.88	26.09	25.98	62.06	26.03	25.94	25.90
2/21/2007 14:00	42.32	39.01	38.99	39.05	38.94	38.94	39.06	39.00	60.76	39.03	38.98	38.95
2/21/2007 15:00	56.22	54.81	54.80	54.81	54.77	54.77	54.83	54.81	64.04	54.81	54.79	54.78
2/21/2007 16:00	39.74	35.93	35.89	35.93	35.83	35.83	35.97	35.92	60.71	35.94	35.89	35.85
2/21/2007 17:00	23.81	16.69	16.68	16.78	16.55	16.56	16.82	16.69	62.45	16.76	16.64	16.59
2/21/2007 18:00	21.91	14.89	14.88	14.98	14.75	14.76	15.02	14.89	60.09	14.96	14.84	14.78
2/21/2007 19:00	52.62	50.66	50.66	50.69	50.62	50.62	50.70	50.66	63.68	50.68	50.65	50.63
2/21/2007 20:00	55.36	53.50	53.50	53.53	53.46	53.47	53.54	53.50	65.71	53.52	53.49	53.47
2/21/2007 21:00	31.95	25.98	25.97	26.06	25.86	25.86	26.09	25.98	64.94	26.04	25.94	25.88
2/21/2007 22:00	33.03	27.79	27.78	27.86	27.69	27.69	27.89	27.79	61.44	27.84	27.75	27.71
2/21/2007 23:00	22.68	17.21	17.15	17.21	17.06	17.07	17.26	17.19	51.32	17.22	17.15	17.10
2/22/2007 0:00	21.81	17.36	17.29	17.32	17.22	17.23	17.38	17.33	44.43	17.35	17.30	17.26

Table B:
Average Prices by Hour for
Load Settlement Locations and SPP-Wide

Hour Ending CPT	SPP	CSWS	EDE	GRDA	KACY	KCPL	OKGE	SECI	SPS	WFEC	WPEK	WR
2/22/2007 1:00	24.29	24.29	24.29	24.29	24.29	24.29	24.29	24.29	24.29	24.29	24.29	24.29
2/22/2007 2:00	16.36	15.23	15.22	15.23	15.20	15.20	15.24	15.23	21.98	15.23	15.22	15.21
2/22/2007 3:00	15.85	14.52	14.50	14.51	14.48	14.48	14.53	14.52	22.42	14.52	14.51	14.49
2/22/2007 4:00	17.59	15.07	15.04	15.05	15.00	15.00	15.09	15.06	29.99	15.07	15.04	15.02
2/22/2007 5:00	19.21	16.61	16.59	16.61	16.55	16.55	16.64	16.61	32.12	16.62	16.59	16.56
2/22/2007 6:00	42.57	42.49	42.49	42.49	42.49	42.49	42.49	42.49	43.00	42.49	42.49	42.49
2/22/2007 7:00	58.01	56.69	56.68	56.70	56.66	56.66	56.71	56.69	65.25	56.70	56.68	56.67
2/22/2007 8:00	52.04	49.94	49.93	49.96	49.89	49.90	49.97	49.93	63.58	49.95	49.92	49.90
2/22/2007 9:00	40.71	36.56	36.54	36.60	36.47	36.47	36.63	36.55	63.32	36.59	36.52	36.48
2/22/2007 10:00	55.87	54.53	54.52	54.54	54.50	54.50	54.55	54.52	63.17	54.54	54.51	54.50
2/22/2007 11:00	35.22	30.13	30.12	30.18	30.02	30.02	30.22	30.12	62.91	30.17	30.08	30.04
2/22/2007 12:00	31.04	25.32	25.31	25.38	25.20	25.20	25.42	25.31	62.01	25.37	25.27	25.22
2/22/2007 13:00	38.74	35.02	35.04	35.07	34.99	34.99	35.08	35.04	58.79	35.06	35.02	35.00
2/22/2007 14:00	52.77	52.39	52.40	52.40	52.39	52.39	52.39	52.39	54.82	52.39	52.39	52.39
2/22/2007 15:00	42.93	41.30	41.32	41.33	41.31	41.31	41.31	41.31	51.68	41.31	41.31	41.31
2/22/2007 16:00	30.48	26.09	26.15	26.17	26.13	26.13	26.13	26.13	53.88	26.13	26.13	26.13
2/22/2007 17:00	35.44	31.51	31.56	31.58	31.54	31.54	31.54	31.54	56.17	31.54	31.54	31.54
2/22/2007 18:00	46.44	46.34	44.21	43.92	44.20	44.20	43.38	43.86	55.94	43.31	43.95	44.15
2/22/2007 19:00	67.73	67.29	67.29	67.29	67.29	67.29	67.29	67.29	70.18	67.29	67.29	67.29
2/22/2007 20:00	62.94	62.94	62.94	62.94	62.94	62.94	62.94	62.94	62.94	62.94	62.94	62.94
2/22/2007 21:00	63.42	63.42	63.42	63.42	63.42	63.42	63.42	63.42	63.42	63.42	63.42	63.42
2/22/2007 22:00	42.67	41.46	41.46	41.47	41.44	41.44	41.49	41.46	49.13	41.47	41.45	41.44
2/22/2007 23:00	41.62	41.37	41.37	41.37	41.37	41.37	41.38	41.37	42.89	41.37	41.37	41.37
2/23/2007 0:00	18.88	18.68	18.67	18.67	18.67	18.67	18.68	18.67	19.91	18.67	18.67	18.67

Table B:
Average Prices by Hour for
Load Settlement Locations and SPP-Wide

Hour Ending CPT	SPP	CSWS	EDE	GRDA	KACY	KCPL	OKGE	SECI	SPS	WFEC	WPEK	WR
2/23/2007 1:00	16.77	16.37	16.36	16.36	16.35	16.36	16.37	16.36	18.76	16.36	16.36	16.36
2/23/2007 2:00	16.76	16.55	16.53	16.54	16.52	16.52	16.55	16.38	17.86	16.55	16.45	16.52
2/23/2007 3:00	17.79	16.86	16.72	16.86	16.52	16.53	16.95	14.37	23.20	16.87	15.46	16.45
2/23/2007 4:00	21.51	21.31	21.26	21.32	21.19	21.19	21.35	20.32	22.78	21.32	20.76	21.16
2/23/2007 5:00	23.89	23.60	23.52	23.60	23.41	23.42	23.65	22.16	25.83	23.61	22.80	23.37
2/23/2007 6:00	42.08	41.95	41.91	41.95	41.86	41.86	41.97	41.23	42.99	41.95	41.55	41.84
2/23/2007 7:00	62.17	64.07	64.29	64.40	65.52	65.51	64.26	43.73	53.24	63.80	16.73	68.12
2/23/2007 8:00	52.92	52.29	52.28	52.28	52.27	52.27	52.29	52.28	56.34	52.29	52.28	52.27
2/23/2007 9:00	48.66	46.99	46.96	46.98	46.93	46.94	47.00	46.98	57.73	46.98	46.96	46.95
2/23/2007 10:00	63.74	63.74	63.74	63.74	63.74	63.74	63.74	63.74	63.74	63.74	63.74	63.74
2/23/2007 11:00	54.58	54.48	54.48	54.48	54.48	54.48	54.48	54.48	55.15	54.48	54.48	54.48
2/23/2007 12:00	46.24	46.24	46.24	46.24	46.24	46.24	46.24	46.24	46.24	46.24	46.24	46.24
2/23/2007 13:00	27.59	27.29	27.29	27.29	27.28	27.28	27.29	27.29	29.23	27.29	27.29	27.28
2/23/2007 14:00	22.58	22.20	22.20	22.20	22.19	22.19	22.20	22.20	24.62	22.20	22.20	22.19
2/23/2007 15:00	19.35	18.35	18.34	18.35	18.32	18.32	18.36	18.35	24.73	18.35	18.34	18.33
2/23/2007 16:00	20.67	19.85	19.79	19.85	19.70	19.71	19.89	18.91	25.37	19.85	19.32	19.69
2/23/2007 17:00	16.55	15.42	15.36	15.41	15.30	15.30	15.45	14.73	22.82	15.42	15.02	15.28
2/23/2007 18:00	17.74	16.96	16.90	16.96	16.80	16.81	17.00	15.91	22.33	16.97	16.37	16.78
2/23/2007 19:00	43.93	43.83	43.82	43.83	43.80	43.80	43.83	43.66	44.56	43.83	43.73	43.80
2/23/2007 20:00	38.30	38.30	38.30	38.30	38.30	38.30	38.30	38.30	38.30	38.30	38.30	38.30
2/23/2007 21:00	32.84	32.81	32.80	32.81	32.78	32.78	32.81	32.59	33.11	32.81	32.69	32.77
2/23/2007 22:00	41.34	40.17	40.00	40.17	39.77	39.78	40.27	37.27	48.62	40.19	38.54	39.70
2/23/2007 23:00	42.63	42.63	42.63	42.63	42.63	42.63	42.63	42.63	42.63	42.63	42.63	42.63
2/24/2007 0:00	15.72	15.72	15.72	15.72	15.72	15.72	15.72	15.72	15.72	15.72	15.72	15.72

Table B:
Average Prices by Hour for
Load Settlement Locations and SPP-Wide

Hour Ending CPT	SPP	CSWS	EDE	GRDA	KACY	KCPL	OKGE	SECI	SPS	WFEC	WPEK	WR
2/24/2007 1:00	14.01	13.67	13.67	13.67	13.66	13.66	13.67	13.67	15.64	13.67	13.67	13.66
2/24/2007 2:00	23.15	23.15	23.15	23.15	23.15	23.15	23.15	23.15	23.15	23.15	23.15	23.15
2/24/2007 3:00	20.89	20.64	20.63	20.64	20.63	20.63	20.64	20.60	22.08	20.64	20.61	20.63
2/24/2007 4:00	19.99	21.15	19.56	19.41	19.48	19.48	19.08	18.25	20.68	18.97	18.80	19.40
2/24/2007 5:00	16.15	16.14	16.14	16.14	16.14	16.14	16.14	16.14	16.17	16.14	16.14	16.14
2/24/2007 6:00	20.77	20.63	20.63	20.63	20.63	20.63	20.63	20.63	21.38	20.63	20.63	20.63
2/24/2007 7:00	50.90	50.01	51.14	49.42	57.05	57.36	49.17	49.50	49.18	49.57	47.30	52.44
2/24/2007 8:00	24.97	21.37	25.94	19.12	49.21	50.29	18.13	19.43	18.17	19.69	10.67	31.03
2/24/2007 9:00	67.81	58.67	70.25	53.04	128.89	131.38	50.38	53.10	51.52	54.41	31.19	82.93
2/24/2007 10:00	62.21	59.86	62.90	58.39	78.21	78.76	57.71	58.57	57.74	58.74	52.75	66.24
2/24/2007 11:00	80.53	70.64	83.08	63.74	149.12	151.45	60.68	64.52	61.03	65.35	39.48	97.57
2/24/2007 12:00	44.99	43.00	45.41	41.21	59.78	60.27	40.63	41.43	40.69	41.64	35.96	48.59
2/24/2007 13:00	93.62	80.08	96.10	68.17	191.88	195.15	64.17	69.62	64.73	71.04	33.45	117.26
2/24/2007 14:00	78.01	68.08	79.73	59.44	149.86	152.42	56.40	60.49	56.89	61.45	34.24	95.26
2/24/2007 15:00	80.99	71.99	82.59	64.19	146.44	148.61	61.26	65.41	61.92	66.03	41.40	96.77
2/24/2007 16:00	29.14	28.34	29.28	27.63	34.95	35.13	27.37	27.74	27.44	27.80	25.61	30.54
2/24/2007 17:00	25.30	24.64	25.40	24.09	29.98	30.14	23.88	24.21	23.96	24.23	22.67	26.42
2/24/2007 18:00	48.50	44.38	49.25	40.84	78.71	79.78	39.48	41.63	40.03	41.71	31.71	55.79
2/24/2007 19:00	58.60	58.07	58.70	57.61	62.49	62.61	57.44	57.72	57.51	57.72	56.42	59.54
2/24/2007 20:00	78.78	73.89	80.11	69.47	117.73	118.99	67.57	70.33	68.28	70.40	57.39	87.68
2/24/2007 21:00	48.32	48.32	48.32	48.32	48.32	48.32	48.32	48.32	48.32	48.32	48.32	48.32
2/24/2007 22:00	46.52	46.52	46.52	46.52	46.52	46.52	46.52	46.52	46.52	46.52	46.52	46.52
2/24/2007 23:00	44.66	44.01	43.83	44.02	43.56	43.57	44.13	40.53	49.10	44.03	42.03	43.47
2/25/2007 0:00	31.19	29.61	29.26	29.61	28.75	28.78	29.84	23.11	41.16	29.65	25.89	28.58

Table B:
Average Prices by Hour for
Load Settlement Locations and SPP-Wide

Hour Ending CPT	SPP	CSWS	EDE	GRDA	KACY	KCPL	OKGE	SECI	SPS	WFEC	WPEK	WR
2/25/2007 1:00	23.85	20.13	19.72	20.14	19.12	19.14	20.41	12.75	44.38	20.18	15.92	18.93
2/25/2007 2:00	27.87	26.40	24.85	26.18	23.10	23.14	27.79	18.70	40.56	27.39	20.20	22.35
2/25/2007 3:00	33.37	32.36	30.90	32.16	29.23	29.27	33.64	23.75	43.78	33.24	25.88	28.52
2/25/2007 4:00	40.03	39.15	38.26	39.04	37.22	37.25	39.91	32.71	47.79	39.64	34.63	36.78
2/25/2007 5:00	44.07	43.98	43.96	43.98	43.93	43.93	44.00	43.54	44.66	43.99	43.73	43.91
2/25/2007 6:00	24.74	24.07	23.93	24.08	23.66	23.66	24.19	20.78	29.05	24.11	22.21	23.57
2/25/2007 7:00	21.53	20.92	20.86	20.92	20.64	20.65	21.01	18.74	25.22	20.95	19.70	20.59
2/25/2007 8:00	33.08	32.11	32.03	32.11	31.74	31.75	32.24	29.18	38.88	32.15	30.48	31.67
2/25/2007 9:00	60.52	60.52	60.52	60.52	60.52	60.52	60.52	60.52	60.52	60.52	60.52	60.52
2/25/2007 10:00	62.50	62.50	62.50	62.50	62.50	62.50	62.50	62.50	62.50	62.50	62.50	62.50
2/25/2007 11:00	49.15	49.15	49.15	49.15	49.15	49.15	49.15	49.15	49.15	49.15	49.15	49.15
2/25/2007 12:00	29.39	29.39	29.39	29.39	29.39	29.39	29.39	29.39	29.39	29.39	29.39	29.39
2/25/2007 13:00	24.49	24.35	24.35	24.35	24.35	24.35	24.35	24.35	25.23	24.35	24.35	24.35
2/25/2007 14:00	23.57	23.57	23.57	23.57	23.57	23.57	23.57	23.57	23.57	23.57	23.57	23.57
2/25/2007 15:00	27.22	27.22	27.22	27.22	27.22	27.22	27.22	27.22	27.22	27.22	27.22	27.22
2/25/2007 16:00	27.41	27.41	27.41	27.41	27.41	27.41	27.41	27.41	27.41	27.41	27.41	27.41
2/25/2007 17:00	47.46	40.31	47.67	34.80	92.19	93.52	33.04	35.80	33.53	36.29	19.16	57.81
2/25/2007 18:00	88.14	68.43	88.32	53.39	209.89	213.48	48.43	56.06	49.85	57.42	10.74	116.09
2/25/2007 19:00	102.56	87.97	102.82	76.68	194.76	197.29	72.83	78.58	73.89	79.66	44.33	123.97
2/25/2007 20:00	67.10	67.04	67.10	66.99	67.49	67.50	66.97	67.00	66.98	67.00	66.85	67.19
2/25/2007 21:00	64.37	64.37	64.37	64.37	64.37	64.37	64.37	64.37	64.37	64.37	64.37	64.37
2/25/2007 22:00	64.41	64.19	64.44	64.00	66.01	66.05	63.93	64.03	63.95	64.05	63.44	64.80
2/25/2007 23:00	35.37	35.25	35.22	35.25	35.17	35.17	35.27	34.59	36.23	35.26	34.89	35.15
2/26/2007 0:00	15.64	15.40	15.35	15.40	15.28	15.29	15.43	14.52	17.25	15.40	14.91	15.26

Table B:
Average Prices by Hour for
Load Settlement Locations and SPP-Wide

Hour Ending CPT	SPP	CSWS	EDE	GRDA	KACY	KCPL	OKGE	SECI	SPS	WFEC	WPEK	WR
2/26/2007 1:00	19.61	19.32	19.28	19.32	19.22	19.22	19.35	18.56	21.38	19.33	18.90	19.20
2/26/2007 2:00	24.76	24.69	24.67	24.69	24.64	24.64	24.70	24.29	25.28	24.69	24.46	24.63
2/26/2007 3:00	23.06	23.00	22.98	23.00	22.96	22.96	23.01	22.67	23.49	23.00	22.82	22.95
2/26/2007 4:00	35.20	35.20	35.20	35.20	35.20	35.20	35.20	35.20	35.20	35.20	35.20	35.20
2/26/2007 5:00	47.65	47.65	47.65	47.65	47.65	47.65	47.65	47.65	47.65	47.65	47.65	47.65
2/26/2007 6:00	66.86	59.62	67.88	52.25	122.14	124.62	50.35	53.49	50.67	54.10	33.25	80.22
2/26/2007 7:00	54.84	54.84	54.84	54.84	54.84	54.84	54.84	54.84	54.84	54.84	54.84	54.84
2/26/2007 8:00	73.79	71.25	74.12	68.77	92.93	93.51	68.05	69.14	68.16	69.36	62.07	78.39
2/26/2007 9:00	67.75	65.26	68.02	62.99	85.81	86.43	62.27	63.34	62.42	63.55	56.62	72.08
2/26/2007 10:00	58.04	58.04	58.04	58.04	58.04	58.04	58.04	58.04	58.04	58.04	58.04	58.04
2/26/2007 11:00	73.99	70.00	74.45	66.17	102.37	103.20	65.32	66.89	65.54	67.46	56.17	81.08
2/26/2007 12:00	55.25	55.25	55.25	55.25	55.25	55.25	55.25	55.25	55.25	55.25	55.25	55.25
2/26/2007 13:00	49.81	49.81	49.81	49.81	49.81	49.81	49.81	49.81	49.81	49.81	49.81	49.81
2/26/2007 14:00	58.52	54.12	58.92	49.94	89.50	90.50	49.11	50.81	49.32	51.43	39.07	66.40
2/26/2007 15:00	35.57	35.57	35.57	35.57	35.57	35.57	35.57	35.57	35.57	35.57	35.57	35.57
2/26/2007 16:00	38.65	38.65	38.65	38.65	38.65	38.65	38.65	38.65	38.65	38.65	38.65	38.65
2/26/2007 17:00	36.49	36.49	36.49	36.49	36.49	36.49	36.49	36.49	36.49	36.49	36.49	36.49
2/26/2007 18:00	34.36	34.31	34.31	34.31	34.31	34.31	34.31	34.31	34.63	34.31	34.31	34.31
2/26/2007 19:00	49.57	49.31	49.58	49.08	51.31	51.35	49.03	49.16	49.05	49.16	48.45	50.00
2/26/2007 20:00	60.28	58.72	60.38	57.25	71.12	71.35	56.95	57.73	57.08	57.76	53.35	63.00
2/26/2007 21:00	50.01	50.01	50.01	50.01	50.01	50.01	50.01	50.01	50.01	50.01	50.01	50.01
2/26/2007 22:00	51.86	51.66	51.66	51.66	51.54	51.54	51.72	50.59	53.33	51.69	51.10	51.52
2/26/2007 23:00	24.25	23.59	23.51	23.59	23.12	23.13	23.76	19.72	29.47	23.66	21.52	23.04
2/27/2007 0:00	22.51	21.45	21.26	21.45	20.65	20.68	21.70	15.21	30.76	21.53	18.07	20.52

Table B:
Average Prices by Hour for
Load Settlement Locations and SPP-Wide

Hour Ending CPT	SPP	CSWS	EDE	GRDA	KACY	KCPL	OKGE	SECI	SPS	WFEC	WPEK	WR
2/27/2007 1:00	22.33	22.29	22.28	22.29	22.26	22.26	22.29	22.05	22.64	22.29	22.16	22.25
2/27/2007 2:00	19.91	19.71	19.68	19.71	19.58	19.58	19.76	18.64	21.32	19.73	19.13	19.55
2/27/2007 3:00	19.38	19.38	19.38	19.38	19.38	19.38	19.38	19.38	19.38	19.38	19.38	19.38
2/27/2007 4:00	20.18	20.18	20.18	20.18	20.18	20.18	20.18	20.18	20.18	20.18	20.18	20.18
2/27/2007 5:00	23.43	23.43	23.43	23.43	23.43	23.43	23.43	23.43	23.43	23.43	23.43	23.43
2/27/2007 6:00	44.38	44.28	44.28	44.28	44.23	44.23	44.31	43.80	45.02	44.29	44.03	44.22
2/27/2007 7:00	131.55	108.69	130.58	83.13	285.76	291.35	80.32	116.75	93.42	93.12	36.38	174.01
2/27/2007 8:00	84.96	81.17	87.69	55.06	152.61	154.66	59.02	75.89	65.00	65.44	39.94	102.29
2/27/2007 9:00	39.85	37.45	39.72	34.86	55.60	56.09	34.66	38.29	35.96	35.94	30.16	44.16
2/27/2007 10:00	75.38	62.52	74.35	49.05	157.17	160.17	47.99	67.67	55.20	54.82	25.19	97.98
2/27/2007 11:00	33.12	32.11	33.02	31.09	39.42	39.65	31.02	32.54	31.58	31.55	29.25	34.85
2/27/2007 12:00	19.09	19.09	19.09	19.09	19.09	19.09	19.09	19.09	19.09	19.09	19.09	19.09
2/27/2007 13:00	22.22	22.22	22.22	22.22	22.22	22.22	22.22	22.22	22.22	22.22	22.22	22.22
2/27/2007 14:00	28.15	27.80	28.10	27.44	30.33	30.42	27.42	27.95	27.62	27.60	26.82	28.75
2/27/2007 15:00	22.06	22.06	22.06	22.06	22.06	22.06	22.06	22.06	22.06	22.06	22.06	22.06
2/27/2007 16:00	21.77	21.77	21.77	21.77	21.77	21.77	21.77	21.77	21.77	21.77	21.77	21.77
2/27/2007 17:00	16.55	16.50	16.50	16.50	16.48	16.48	16.51	16.28	16.88	16.51	16.38	16.47
2/27/2007 18:00	23.17	19.20	19.56	18.73	21.91	22.04	19.00	13.16	43.26	19.05	14.45	19.62
2/27/2007 19:00	112.26	86.73	109.52	61.53	271.91	277.24	57.53	96.36	71.56	70.66	14.32	156.76
2/27/2007 20:00	78.16	68.42	77.32	58.59	140.86	142.87	56.81	72.17	62.45	62.11	39.91	95.73
2/27/2007 21:00	49.15	43.52	48.68	37.93	85.18	86.40	36.99	45.76	40.18	39.91	26.80	59.31
2/27/2007 22:00	53.31	46.63	52.73	40.15	95.35	96.79	39.07	48.87	43.48	42.48	26.67	65.11
2/27/2007 23:00	21.02	20.02	20.00	20.01	19.64	19.65	20.20	16.65	27.23	20.10	18.30	19.57
2/28/2007 0:00	16.61	15.86	15.84	15.85	15.57	15.58	15.99	13.31	21.17	15.92	14.52	15.53

Table B:
Average Prices by Hour for
Load Settlement Locations and SPP-Wide

Hour Ending CPT	SPP	CSWS	EDE	GRDA	KACY	KCPL	OKGE	SECI	SPS	WFEC	WPEK	WR
2/28/2007 1:00	15.87	14.80	14.79	14.80	14.65	14.66	14.87	13.60	21.55	14.83	14.15	14.63
2/28/2007 2:00	20.59	20.59	20.59	20.59	20.59	20.59	20.59	20.59	20.59	20.59	20.59	20.59
2/28/2007 3:00	16.36	16.36	16.36	16.36	16.36	16.36	16.36	16.36	16.36	16.36	16.36	16.36
2/28/2007 4:00	14.33	14.24	14.24	14.24	14.24	14.24	14.24	14.24	14.79	14.24	14.24	14.24
2/28/2007 5:00	15.34	15.19	15.19	15.19	15.19	15.19	15.20	15.19	16.07	15.19	15.19	15.19
2/28/2007 6:00	15.74	15.25	15.24	15.25	15.24	15.24	15.25	15.25	18.33	15.25	15.24	15.24
2/28/2007 7:00	73.21	47.16	47.07	47.41	46.56	46.58	47.59	47.10	215.96	47.33	46.93	46.70
2/28/2007 8:00	27.28	27.13	27.12	27.13	27.04	27.05	27.17	26.37	28.30	27.15	26.73	27.03
2/28/2007 9:00	21.05	21.01	21.01	21.01	20.99	20.99	21.02	20.80	21.35	21.02	20.90	20.99
2/28/2007 10:00	24.92	24.80	24.80	24.80	24.74	24.74	24.83	24.25	25.67	24.82	24.51	24.73
2/28/2007 11:00	26.39	26.34	26.33	26.33	26.30	26.30	26.35	26.04	26.79	26.34	26.18	26.30
2/28/2007 12:00	52.46	48.01	52.70	43.88	81.23	82.41	43.01	51.08	45.67	45.38	33.64	59.84
2/28/2007 13:00	20.86	20.71	20.70	20.71	20.62	20.62	20.75	19.93	21.93	20.73	20.30	20.60
2/28/2007 14:00	36.42	36.42	36.42	36.42	36.42	36.42	36.42	36.42	36.42	36.42	36.42	36.42
2/28/2007 15:00	33.08	33.08	33.08	33.08	33.08	33.08	33.08	33.08	33.08	33.08	33.08	33.08
2/28/2007 16:00	21.90	21.79	21.78	21.79	21.73	21.73	21.82	21.24	22.65	21.80	21.50	21.72
2/28/2007 17:00	23.54	23.49	23.48	23.49	23.45	23.45	23.50	23.20	23.94	23.49	23.33	23.45
2/28/2007 18:00	35.57	35.57	35.57	35.57	35.57	35.57	35.57	35.57	35.57	35.57	35.57	35.57
2/28/2007 19:00	41.44	41.44	41.44	41.44	41.44	41.44	41.44	41.44	41.44	41.44	41.44	41.44
2/28/2007 20:00	52.88	52.88	52.88	52.88	52.88	52.88	52.88	52.88	52.88	52.88	52.88	52.88
2/28/2007 21:00	47.86	47.86	47.86	47.86	47.86	47.86	47.86	47.86	47.86	47.86	47.86	47.86
2/28/2007 22:00	32.06	31.32	31.30	31.31	30.95	30.96	31.48	28.12	36.96	31.40	29.61	30.89
2/28/2007 23:00	22.64	21.62	21.61	21.62	21.39	21.40	21.73	19.73	28.35	21.67	20.60	21.36
3/1/2007 0:00	14.66	13.62	13.61	13.62	13.55	13.55	13.65	13.22	19.88	13.63	13.39	13.55