

Member Impacting Project Overview:

Market Monitoring Portal Release 1.4.0

Version 1.0

Table of Contents

Version Control 2

Executive Summary 2

Business Impact 2

 Users Impacted 3

 Business Functions Impacted 3

 SPP Systems/Processes Impacted 3

 Anticipated Member Systems/Processes Impacted 3

Member Requirements 3

Testing 3

Training 3

Implementation/Back-out Plan 3

Summary of Timeline 4

Project Assumptions 4

Risks 4

Additional Documentation 4

 MIPO and Project Documentation 4

Next Steps 5

FAQs 5

More Information 5

Appendix A – Process Flow 6

Appendix B – Screen prints of new functionality 7

Version Control

Version	Date	Author	Change Description
1.0	07/02/18	Tom White	Initial version

Executive Summary

In this document the term “members” refers to any and all stakeholders which could include Market Participants, Members, Customers, Transmission Owners, Vendors, etc.

This change allows market participants to add a major maintenance component to the Mitigated Start-Up offer and the Mitigated No-Load Offer. Such cost must be based solely on resource-specific information derived from actual variable maintenance costs, when available, or estimated variable maintenance costs. The Market Participants will provide cost information to the Market Monitoring Unit through the Market Monitoring Portal (MMP) web interface.

Business Impact

Market Participants will be able to include major maintenance costs associated with the number of starts or run hours in their Mitigated Start-Up Offers and Mitigated No-Load Offers.

A few values will be entered directly into the MMP interface but most of the work will go on in a spreadsheet (or doc depending on the MPs preference). The functionality is similar to our mitigated offer development methodology documents (a.k.a. fuel policies).

Users Impacted

Generation owners and operators

Business Functions Impacted

Anyone responsible for providing the SPP Market Monitor with the cost components required to calculate mitigated offers.

SPP Systems/Processes Impacted

- MMP
- No applications or processes other than MMP are affected.
- There will be a brief downtime of 15 minutes during the release implementation.

Anticipated Member Systems/Processes Impacted

- Limited to MMP

Member Requirements

Testing

- MMP Release 1.4.0 will be available for Member validation from 07/23/18 through 07/27/18.
- Members will have the opportunity to review the changes in MTE.
- As these enhancements are minor, testing is not required, but encouraged.
- Since formal testing is not required, a testing checklist or scorecard will not be utilized for this project.

Training

- These minor enhancements do not require training

Implementation/Back-out Plan

- Implementation of this release will require a brief outage while the application is upgraded and restarted. Should this release adversely affect the MMP, the application will be reverted back to the previous version.

Summary of Timeline

Date	Responsible Party	Action
05/28/18 – 07/20/18	SPP	Requirements, Design, Build
07/06/18	SPP	Publish MP Requirements via MIPO
07/06/18	SPP	Publish MP Validation details via MIPO
07/23/18 – 07/27/18	Member	MP Validation phase
08/02/18	SPP / Member	Implementation

Project Assumptions

N/A

Risks

No risks identified

Additional Documentation

N/A

MIPO and Project Documentation

- All project communication and information will be posted to the SPP Change Working Group (CWG) Project Documentation folder - [Market Monitoring Portal - Release 1.4.0](#)
- This MIPO will be updated upon change or with any new information, and according to the Member Project Touch Points and Deliverables. With any update, a redline version will be posted to the project documentation folder, and the CWG will be notified.

Next Steps

Action	Assignee	Status & Due Date
Send project communication	CWG Staff Secretary	MIPO – 07/06/2018
Install into MTE	SPP	07/20/2018
Unstructured Member testing	CWG Representative	07/23/2018 – 07/27/2018
Go Live	SPP, Members	08/02/2018

FAQs

Frequently asked questions will be added to the document as identified or necessary

Question	Origination	Answer

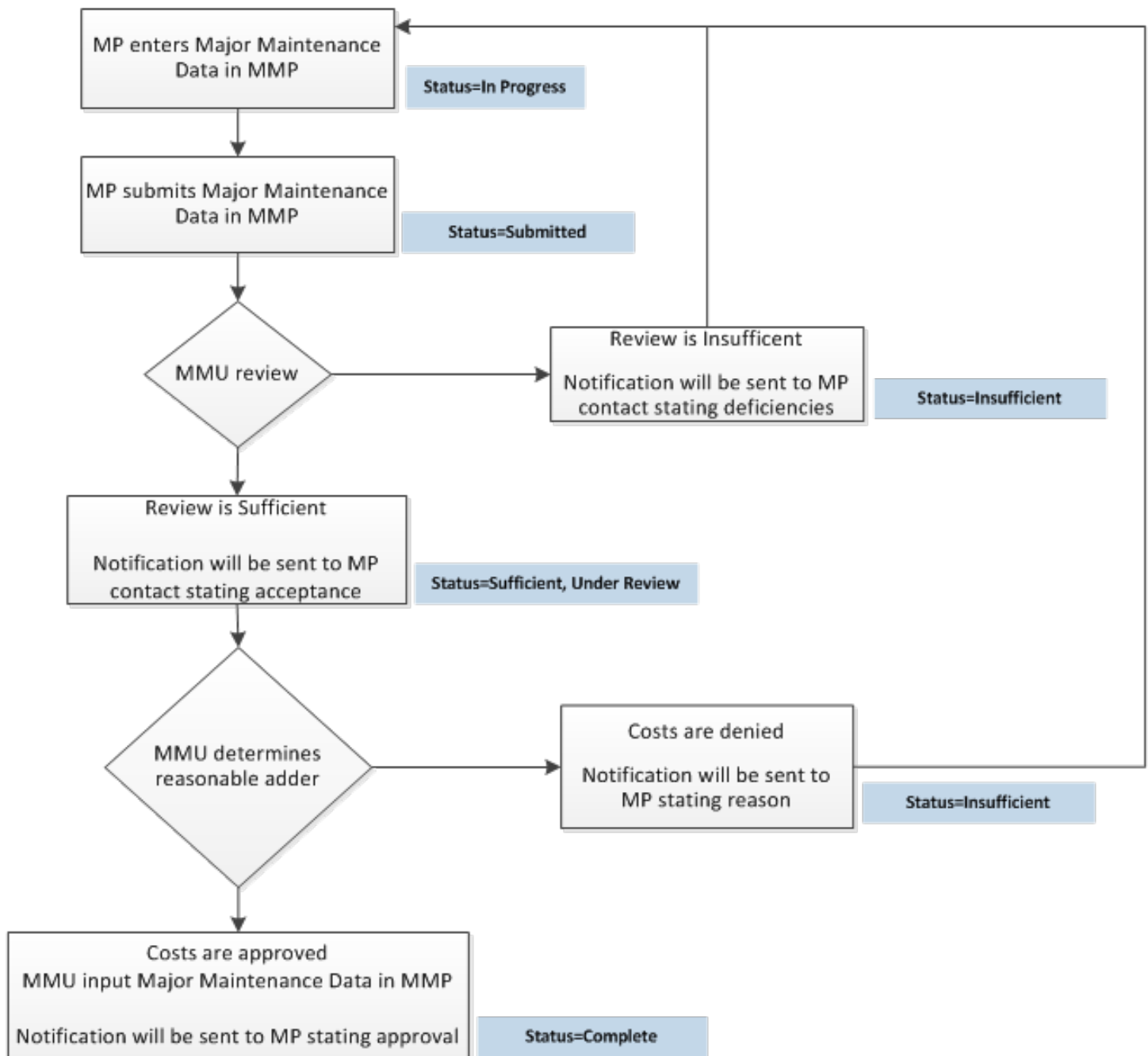
More Information

- At any time, members can ask questions or get more information by completing an RMS ticket using “General Inquiry” Quick Pick and in subject field insert “Market Monitoring Portal Release 1.4.0”.

RMS link: <https://spprms.issuetrak.com/login.asp>.

- If a new user ID is needed for RMS, click on that link and follow the directions for “Register Now”.

Appendix A – Process Flow



Appendix B – Screen prints of new functionality

SPP: Market Monitoring Portal Acting as Asset Owner RELI14

Edit Generator Costs for [REDACTED]

Station Service Rate	Supplemental Addl Labor Cost 0.00	Condensing Op Start Cost	Condensing Op VOM
No Load Fuel Cost	No Load VOM	No Load VOM Units	Condensing Load
Proposed No Load Major Maintenance Cost	Proposed Start Major Maintenance Cost	Min Economic Cap Limit Heat In	

← CANCEL SAVE CHANGES

SPP: Market Monitoring Portal Acting as Asset Owner RELI14

Generator Costs for RELI14

No Load VOM	No Load VOM Units	Condensing Load	Proposed No Load Major Maintenance Cost	Approved No Load Major Maintenance Cost	Proposed Start Major Maintenance Cost	Approved Start Major Maintenance Cost	Min Economic Cap Limit Heat In
			1.27	1.24	2.75	2.25	

SPP: Market Monitoring Portal Acting as Asset Owner RELI14

Mitigated Offer Policies for RELI14

<input type="checkbox"/>	MODM Name	Major Maintenance Adder	Status Change Date	Approved By	submit_status	Updated On
<input type="checkbox"/>	Test upload major maintenance 2	true	2018-06-29 20:24:40		In Progress	2018-06-29
<input type="checkbox"/>	Test upload major maintenance	false	2018-06-29 20:00:04		In Progress	2018-06-29

SPP: Market Monitoring Portal Acting as Asset Owner RELI14

Edit Policies for RELI14

modm_name
Test upload major maintenance 2

major_maint_adder

← CANCEL SAVE CHANGES