

Southwest Power Pool
COMPLIANCE COMMITTEE MEETING
March 29, 2007
Boston Pacific Offices, Washington D.C.

• M I N U T E S •

Agenda Item 1 – Administrative Items

SPP Chair Josh Martin called the meeting to order at 10:00 a.m. The following members were in attendance: Josh Martin (Director), Phyllis Bernard (Director), and Quentin Jackson (Director). Staff in attendance included Stacy Duckett. Guests included Ron Ciesiel and Alan McQueen (SPP); and Craig Roach (Boston Pacific).

Mr. Martin referred to the draft minutes of the December 11, 2006 meeting and asked for corrections or a motion for approval (12/11/06 Meeting Minutes – Attachment 1). Quentin Jackson moved to approve the minutes as presented. Phyllis Bernard seconded the motion, which passed unopposed.

Agenda Item 2 – Review of Past Action Items

Stacy Duckett reported that there were no action items to review.

Agenda Item 3 – ERO/RE Update

Stacy Duckett provided an update on the ERO/RE project. The Regional Entity (RE) Delegation Agreements have been filed by NERC at FERC. Commission action is pending. The group discussed possible outcomes and results.

Agenda Item 4 – Compliance Project

Stacy Duckett reported on a new internal project to assess compliance requirements that SPP will have going forward. The purpose of the project is to ensure all compliance requirements are known, and then determine the approach/process to address the requirements. Josh Martin asked that this be an action item for reporting at the committee's next meeting.

Agenda Item 5 – Update on Current Activities

Compliance Department

Ron Ciesiel provided an update on the NERC registration process (Compliance Department Report – Attachment 2). He then reviewed the audit and field review results for 2006. The group discussed the ability to provide assistance/advice for audit compliance if SPP becomes an RE. Quentin Jackson asked that the audit review results include the date of the last audit and some indication of the current results compared to the previous audit. Mr. Martin will highlight those entities that were 100% compliant in 2006 during his report at the April Board meeting. Mr. Jackson also asked that this be reported in The Org Report. The committee reviewed and discussed the confirmed violations for 2006.

Market Monitoring Unit

Alan McQueen provided the Market Monitoring Unit Report (MMU Report – Attachment 3). The group discussed current efforts related to the over reservation of the grid for non-firm network service. Mr. McQueen reviewed reporting requirements to FERC.

Compliance Committee Meeting
March 29, 2007

External Market Monitor

Craig Roach reviewed the activities of the External Market Advisor during the first quarter of 2007 (EMA Report – Attachment 4). Considerable work was completed on developing metrics and reporting formats, including the first Monthly Metrics Report (Monthly Metrics Report – Attachment 5). The MMU and the EMA continue to evaluate data and reporting to refine content as well as expand communications. The group spent considerable time reviewing reports from February operations. Mr. Roach then reviewed market participant requests for guidance received by Boston Pacific related to their actions in the market, and how Boston Pacific responded. The committee approved the approach EMA/MMU are using to address these requests, recognizing that the EMA/MMU cannot advise participants on specific strategy or approaches to the market. All are concerned that the EMA/MMU should be available to market participants making it clear that discussions are for education or clarification only and not determinative or in any way protecting a participant from future action. As the market progresses, the committee will assess the volume of requests and determine whether a more formal procedure is necessary.

Boston Pacific will develop the 2006 State of the Market Report for, which will be presented to FERC in May. Richard Dillon and Alan McQueen will provide an update on the 2007 Market Operations concurrent with this presentation.

Craig Roach reviewed the budget and spending year to date for Boston Pacific's services.

The committee thanked Boston Pacific and Mr. Roach for work done on behalf of SPP and coordination with the MMU.

Agenda Item 6 – Summary of Action Items

Stacy Duckett reviewed action items for the next meeting:

- Update on the Compliance Project
- Update on market participant requests for guidance

Other

The committee reviewed the Compliance Department Budget for 2008 (2008 Compliance Department Budget – Attachment 6). Quentin Jackson moved and Phyllis Bernard seconded a motion to approve the budget. Approval was unanimous.

Ron Ciesiel recommended that if the RE issue was resolved, the Compliance Committee should consider meeting with the new RE Trustees to transition responsibilities.

Executive Session

The committee reviewed and approved the Annual Performance Evaluation and Compensation adjustments for the Director of Compliance, as required by the SPP Bylaws.

The executive session adjourned at 3:00 p.m.

Respectfully Submitted,

Stacy Duckett
Secretary



Southwest Power Pool, Inc.
COMPLIANCE COMMITTEE MEETING
March 29, 2007
Boston Pacific Offices, Washington D.C.

• A G E N D A •

10:00 a.m. - 3:00 p.m. EST

- 1. Administrative Items Josh Martin
- 2. Review of Past Action Items..... Stacy Duckett
- 3. ERO/RE Update Stacy Duckett
- 4. Compliance Project Stacy Duckett
- 5. Update on Current Activities
 - a. NERC Compliance..... Ron Ciesiel
 - b. Market Monitoring Unit..... Richard Dillon
 - c. External Market Monitor.....Craig Roach
- 6. Summary of Action Items Stacy Duckett
- 7. Future Meetings Josh Martin
 - Schedule for 2007:

June 28	Philadelphia
September 27	Chicago
December TBD	
 - Schedule for 2008:

March 27	Washington D.C.
June 26	Philadelphia
September 25	Chicago
December TBD	

Executive Session

Southwest Power Pool
COMPLIANCE COMMITTEE MEETING
December 11, 2006
DWF Airport Hyatt, Dallas, Texas

• M I N U T E S •

Agenda Item 1 – Administrative Items

SPP Chair Josh Martin called the meeting to order at 2:20 p.m. The following members were in attendance: Josh Martin (Director), Phyllis Bernard (Director), and Quentin Jackson (Director). Staff in attendance included Stacy Duckett. Guests included Ron Ciesiel and Richard Dillon (SPP); Craig Roach (Boston Pacific); and Richard Ross (AEP). Richard Ross asked to attend the meeting. The agenda was adjusted to move confidential items to later in the meeting.

Mr. Martin referred to the draft minutes of the September 28, 2006 meeting and asked for corrections or a motion for approval (9/28/06 Meeting Minutes – Attachment 1). Quentin Jackson moved to approve the minutes as presented. Phyllis Bernard seconded the motion, which passed unopposed.

Agenda Item 2 – ERO/RE Update

Stacy Duckett stated that NERC has filed individual Regional Entity (RE) Delegation Agreements; all docketed separately. Each entity will file to be a party in other dockets.

Ron Ciesiel announced that March 2, 2007 is the deadline to register entities. It is anticipated that REs will be approved by April 1 and RE services implemented June 1. The Compliance Program will be published with an effective date of January 1, 2007 through the RE implementation anticipated date of June 1, 2007. The RE program outline is expected to be ready for a February 2007 workshop with another workshop scheduled before the RE implementation to assure clarity/understanding since sanctions go into effect on Day 1, and training for those organizational groups that will hear appeals. Effective Day 1, the SPP Compliance Department may no longer serve as liaison/advisor to SPP or members on compliance matters and will handle enforcement only. Michael Desselle will be recommending how this transition is managed.

Agenda Item 4 – Update on Current Activities

Compliance Department

Ron Ciesiel provided an update on the entity registration process. The focus is now on municipals. It is expected that 125 entities will register from the SPP footprint. Mr. Ciesiel also reviewed other audit and field activities. Refer to the activity report for other items of interest (Compliance Department Report – Attachment 2).

Market Monitoring Unit

Richard Dillon provided the Market Monitoring Unit Report (MMU Report – Attachment 3). He advised the group of new hires since the last meeting; two positions remain open. Mr. Dillon reviewed an issue that Les Dillahunty pointed out related to over-reservations of non-firm service and its impact on access to the grid. The MMU is working with the Business Practices Working Group to address this. The FERC reports are complete, except for the Uplift Report which is being prepared by Settlements. Mr. Dillon also provided draft reports, seeking feedback for committee on level of detail. Sample FERC reports were provided.

Compliance Committee Meeting
December 11, 2006

External Market Monitor

Craig Roach provided an update on Boston Pacific's activities since the last meeting (EMM Report – Attachment 4). Most of the time has been spent on the LIP Volatility project requested to support market implementation.

Ron Ciesiel advised the committee on the intent to retain the same vendor for auditing assistance. The contract is by audit and with Mr. Ciesiel's signature authority. The committee supports this decision.

Mr. Roach reviewed the status of Boston Pacific invoices through November 2006.

Agenda Item 3– External Market Monitoring Report

Craig Roach and Stacy Duckett presented the proposal for the External Marketing Advisor's role in 2007. Points of clarification following discussion were:

- a. Timing of State of the Market Report, which is due May 31, but may be adjusted if the Market start is adjusted from February 1
- b. Meeting Attendance – all Board and, Compliance Committee meetings; working groups when invited or with approval of staff (based on whether policy issues are on the agenda)
- c. Budget – adjust hours and/or expenses to accommodate meeting attendance

Agenda Item 5 – Organizational Effectiveness Survey Results

Stacy Duckett reviewed the survey process and the results of the Compliance Committee's survey (Organizational Effectiveness Survey – Attachment 5). The group will consider survey results and comments and will discuss them at the next meeting.

With no further business, Josh Martin thanked everyone for participating and adjourned the meeting to executive session.

Executive Session

Boston Pacific will be engaged for 2007 as the External Market Advisor subject to the stated budget cap.

The executive session adjourned at 4:45 p.m.

Respectfully Submitted,

Stacy Duckett
Secretary



Southwest Power Pool, Inc.

COMPLIANCE DEPARTMENT

Report to the Compliance Committee

March 29, 2007

NERC Entity Registration

SPP currently has 115 NERC registered entities for the SPP footprint. We are sending updates to NERC on a weekly basis. We presented the registration process at the Spring SPP Compliance Rollout Workshop in Tulsa. The staff has also traveled to many Municipal groups and companies to present and answer questions about registration. There will be a final registration list completed by the end of March, but the list will be a continually updated database.

2006 NERC Readiness Audits

SPP completed the following Readiness Audits since the last report:

Grand River Dam Authority	Report Completed
Southwestern Power Administration	Report Completed
Empire District Energy	Report Completed
Southwestern Public Service	Report Completed

2006 Compliance Field Reviews

SPP completed the following Compliance Field Reviews since the last report:

Sunflower Electric Cooperative	Report Completed
Midwest Energy	Report Completed
Midwest ISO	Report Completed
Missouri Public Service	Report Completed
SPP Reliability Coordinator	Report Completed



Companies with no violations for 2006: 100% Compliant for 2006

- AECC – Arkansas Electric Cooperatives
- EDE - Empire District Electric
- INDN – City of Independence, KS
- LAFA – City of Lafayette, LA
- OMPA – Oklahoma Municipal Power Authority
- SPA – Southwest Power Administration
- WPEK – West Plains Electric
- WR - Westar
- YAZO – City of Yazoo City
- KEPCO – Kansas Electric Power Cooperatives
- SPP RC – Southwest Power Pool Reliability Coordinator

Confirmed Violations for 2006

The following ‘confirmed violations’ have been reported to NERC since the last report:

CLECO	PRC-005 Level 2	Relay Maintenance Program
GRDA	EOP-008 Level 3	Plans for loss of Control Center Functionality
MPS	EOP-008 Level3	Plans for loss of Control Center Functionality
MIDW	PRC-005 Level 2	Relay Maintenance Program
OGE	PRC-005 Level 2	Relay Maintenance Program
SECI	EOP-008 Level 3	Plans for loss of Control Center Functionality
SECI	PER-002 Level 3	Operation Personnel Training
SPS	TPL-003 Level 4	System Performance following Loss of Two or more BES elements
SPS	TPL-004 Level 1	System Performance following Extreme BES elements
LEPA	Has 1 violation for 2006 that is pending at this time [Appealed to SPP SPCWG]	



2006 Compliance Program Summary

2006: Total samples collected: 1319 Fully Compliant: 1293 Overall compliance rating of **98%**

2005: Total samples collected: 1221 Fully Compliant: 1161 Overall compliance rating of **95%**

Violations Reported:

Level 1 Non-Compliant: 7

Level 2 Non-Compliant: 9

Level 3 Non-Compliant: 7

Level 4 Non-Compliant: 3

Total Non-compliant violations: 26 [60 violations reported in 2005]

2007 NERC Readiness Audits

SPP has 5 Readiness Audits scheduled for this year.

2007 SPP Compliance Audits (formerly Field Reviews)

SPP completed the following Compliance Audits since the last report:

CLECO Final Report Completed (no violations)

There are 5 more Compliance Audits scheduled for this year including the SPP RC.

Recent Activities

Staff went to CLECO to address registration and compliance concerns and questions.

Staff presented ERO issues at the LEPA Members meeting

Staff met with the City of Alexandria, LA concerning registration issues.

SPP Compliance Department held the Spring Rollout session in Tulsa in February. The attendance was excellent for both days of the workshop. We received many compliments on the material presented at the workshop.

Staff attended the Compliance Database Management System (CDMS) user group meeting to prioritize the updates for the tool in 2007.

Staff has investigated a voting tool created by MRO for use with the standards development process. We will continue evaluating the tool to see if it meets SPP's needs.



Future Activities

SPP will sponsor a Compliance Workshop for ERO changes and issues this summer.

Staff is making a presentation to the Missouri Public Utility Alliance concerning NERC/ ERO/ SPP.

Staff is making a presentation at the SPP Operations Conference in Springfield to address NERC standard EOP-008, Plans for loss of Control Center Functionality.

Staff will make a presentation at the Kansas Electric Power Cooperatives meeting this spring

Staff is participating in a Readiness Audit in another region.

Conducting a Spring 2007 Under Frequency Load Shed (UFLS) survey on May 1st.

Staff is scheduled to attend NERC required auditor training.

Respectfully submitted by:

Ronald W. Ciesiel

Compliance Director

March 22, 2007

Southwest Power Pool, Inc.
MARKET MONITOR
Report to the Compliance Committee
21 March 2007

Staffing

The Market Development and Analysis currently has one open position: Supervisor, Market Design. We continue to conduct focused recruiting for the market design position because of the very specialize skills and experiences requirements for this position.

Activity Update

Inquiries - There have been no new Transmission or EIS complaints since the December meeting and there are no outstanding complaints. Related Market Participant contacts are as follow:

- Network transmission reservations on DC ties
- Failure to follow Self Dispatch Schedules
- MP letters requesting MM “approval” of activities

In all cases the issues were resolved to MM satisfaction or required no action. These types of activities provide visibility for MM and reinforce the notion that MM is actively monitoring behavior in the markets. Referrals from operation staff have been a great asset in identifying potential areas of concern and in providing insight into Market Participant behavior.

MM continues to work with the SPP operations staff and the Business Practices Working Group (BPWG) to implement new tariff language that will mitigate the over-reservation of the Transmission grid in non-firm network service. The objective of this activity is to reduce the potential for transmission hoarding and increase use of the grid.

Infrastructure

Market monitoring IT systems including the Offer Cap program and the mini-data warehouse have performed as expected. Both systems have required only minor enhancement and upgrades.

SPP is pursuing data dictionary and data warehouse projects with the objective of enhance reporting and monitoring capabilities. The data dictionary project will ensure accurate and efficient access to data necessary for monitoring and reporting. The project is in the early planning phase with an expected completion time of 6-9 months. The information and experience acquired in the data dictionary project will be used in planning and designing the data warehouse. Implementation of a warehouse system will be a multi year project. The need for a data warehouse will increase as the volume and complexity of the data increases over time.

Reports

All FERC reports for February are complete. Rigorous data validation is being conducted to ensure accurate and repeatable results for subsequent reporting periods. February reports will be filed with FERC before the end of the month.

There will be three FERC monthly reports: Congestion Resolution, Depth of Market, and Over/Under Scheduling. These are informational filings. Two reporting requirements will take the form of “referrals” to FERC: Uneconomic Over Production/Strategic Bidding and Strategic Withholding. Tariff rules specify a process for identifying and evaluating potential problems related to the two referral topics. Only when specific cases meet FERC required criteria of “credible and sufficient information” to justify a referral to FERC will there be a report sent to FERC.

Market Monitoring staff continue to support the development of other reports for the SPP Board of Directors, RSC Committee, FERC, SPP executives, SPP working groups and committees, and market participants. This includes coordinated and joint efforts with Boston Pacific. Market Monitoring continues to enhance existing reports and prepare new reports for internal monitoring purposes.

Market Analysis - MM staff have been instrumental in detecting market issues, developing analysis, and identifying solutions. Specific areas of interest include ramp rates, VLR, uplift, and LIP revisions.

Respectfully submitted,

Richard Dillon
Director, Market Development and Analysis

**SPP, INC
COMPLIANCE COMMITTEE MEETING
MARCH 29, 2007**

**SUMMARY OF EMA ACTIVITY
SINCE LAST MEETING ON DECEMBER 11, 2006**

A. START UP METRICS

1. Initial Set
 - a. Briefings, design memos, conversations
2. Next Steps
 - a. Completion, “triggers”, added metrics

B. MONTHLY/QUARTERLY METRIC REPORTS

1. First Monthly Report
 - a. Drafts, consultation
2. Presentation
3. Next Steps
 - a. Chairman’s requests, transition
4. Additional confidential details

C. MARKET PARTICIPANT LETTERS

1. Please see copies of letters
2. Policy discussion

D. 2006 STATE OF MARKET REPORT

1. Schedule
 - a. MWG Mid-May
 - b. FERC May 23, 2007

E. BUDGET STATUS TABLES

FEBRUARY 2007

MONTHLY METRICS REPORT
FOR THE SOUTHWEST POWER POOL (SPP)
ENERGY IMBALANCE SERVICES (EIS) MARKET

Prepared by:

The SPP Market Monitoring Unit and
Boston Pacific Company, Inc.

March 27, 2007

LIST OF TABLES AND FIGURES

EXECUTIVE SUMMARY

I. MARKET ACTIVITY

Table One: Electricity Sales in the EIS Market by Day and for the Month

Table Two: Electricity Purchases in the EIS Market by Day and for the Month

II. PRICES

Table Three: Rough Comparison of SPP-Wide, MISO-Wide, and ERCOT-Wide Hourly Price Statistics

Figure One: Price Duration Curve for the EIS Market

Figure Two: Average Price to Load by Load Settlement Location

Table Four: Monthly Flagged Interval Prices Beyond Thresholds

Figure Three: Path of Daily Henry Hub Natural Gas Prices Compared to SPP On-Peak Daily Average

III. PARTICIPATION

Table Five: Percent of Total Capacity Made Available to the EIS Market by Day and for the Month

Figure Four: Capacity Made Available Compared to Load in the SPP Footprint

Table Six: Dispatchable Range of Capacity Made Available to the EIS Market by Day and for the Month

IV. TRANSMISSION CONGESTION

Table Seven: Price Divergence as a Rough Indicator of Transmission Congestion

Table Eight: Transmission Congestion Summary by Flowgate for the Month

APPENDICES

Table A: Average Prices by Day for Load Settlement Locations and SPP-Wide

Table B: Average Prices by Hour for Load Settlement Locations and SPP-Wide

DISCLAIMER

The data and analysis in this report are provided for informational purposes only and shall not be considered or relied upon as market advice or market settlement data. The SPP RTO, the SPP MMU, and Boston Pacific Company, Inc. (collectively the “Authors”) make no representations or warranties of any kind, express or implied, with respect to the accuracy or adequacy of the information contained herein. The Authors shall have no liability to recipients of this information or third parties for the consequences arising from errors or discrepancies in this information, for recipients’ or third parties’ reliance upon such information, or for any claim, loss or damage of any kind or nature whatsoever arising out of or in connection with (i) the deficiency or inadequacy of this information for any purpose, whether or not known or disclosed to the authors, (ii) any error or discrepancy in this information, (iii) the use of this information, or (iv) any loss of business or other consequential loss or damage whether or not resulting from any of the foregoing.

EXECUTIVE SUMMARY

INTRODUCTION

- The SPP Energy Imbalance Services (EIS) Market started on February 1, 2007 and has now completed its first full month of operation.
- This is the first Monthly Metric Report prepared by the SPP Market Monitoring Unit (MMU) and Boston Pacific Company, Inc. (as the External Market Advisor)
- As such, this Report is a work in progress and it will evolve as further market experience is gained. As this point, the Report provides only a snapshot of the first month of the EIS Market.
- Based on this snapshot, we consider February 2007 to be a successful first month for the SPP EIS Market. Our broad view of this first month can be summarized as follows:
 - The level of EIS Market Activity can be considered a good start in both dollars and MWh.
 - Market Prices were generally in line with mature, neighboring real-time markets.
 - Prices are volatile (significantly so), but, again, volatility is in line with that in mature, neighboring markets.
 - Participation, which is voluntary, was robust.
 - Transmission congestion is pervasive in the sense it affects prices in most hours. However, the bottlenecks which cause the congestion are relatively few in number.

MARKET ACTIVITY

- As is the nature of an imbalance market, a *sale* is made by a Market Participant when either (a) it generates more than it has scheduled and/or (b) its actual load is less than it has scheduled. Similarly, a *purchase* is made by a Market Participant when either (a) it generates less than it has scheduled and/or (b) its actual load is more than it has scheduled.¹

¹ For example, say a Market Participant schedules and offers 100 MWh of generation from a power plant; by scheduling and offering, this power plant becomes dispatchable by the EIS Market. If the power plant is dispatched at 125 MWh, it made a 25 MWh sale to the EIS Market. In contrast, if it is dispatched at 70 MWh, it made a 30 MWh purchase from the EIS Market. If a Market Participant schedules 100 MWh of use (load), but actually uses 125 MWh, it has purchased 25 MWh; if its actual use is only 70 MWh, it sold 30 MWh to the EIS Market.

- For the month of February 2007, 982,439 MWh were sold in the EIS Market for a total of \$55.0 million.
- About 1,005,583 MWh were purchased in the month for a total of \$53.6 million.
- To put these MWh purchases and sales in context, note that we estimate a total of about 13 million MWh were used (total load) in the SPP footprint in February 2007. EIS Market sales (at 982,439 MWh) were equal to 7.5% of total load in SPP.²

PRICES

- The SPP-wide, weighted average hourly price to consumers (at load) for February 2007 was \$58.98/MWh in the EIS Market.
- These SPP-wide hourly prices ranged from a low \$12.15/MWh to a high \$202.06/MWh. The median price was \$54.53/MWh. (The median means half the prices were above this level and half below.)
- The SPP-wide weighted average hourly on-peak price was \$68.22/MWh and, for off-peak, the average hourly price was \$49.50/MWh.
- Volatility of SPP-wide hourly prices was significant, as indicated by a Coefficient of Variation of 54%. (This means that the SPP-wide price in any given hour differed, on average, from the monthly average by 54%.)
- Only rough comparisons can be made to other energy imbalance markets because of differences in market structure and current data limitations. As to average monthly price, the SPP weighted average price of \$58.98/MWh (a) fell below the MISO simple average price of \$62.67/MWh and (b) was above the ERCOT simple average of \$52.66/MWh. Volatility was about the same in the SPP, MISO, and ERCOT markets with the Coefficient of Variation at 54%, 58%, and 53%, respectively.
- In addition to the analysis of SPP-wide hourly prices for load, we also assessed prices at 5-minute deployment intervals for both load and generation settlement locations. These are the most granular price data and they can be summarized as follows:
 - 94% were in the zero to \$100/MWh range

² It is important to see that we excluded the category of “First Tier Transmission Customers” from these estimates of Market Activity; SPP tells us there are no invoices for these MWh although they appear in the settlement database.

- 1.1% were negative;
 - 4.6% were in the \$100 to \$400/MWh range, and;
 - 0.3% were above \$400/MWh.
- We expect swings in natural gas prices to drive on-peak prices. However, SPP-wide EIS on-peak prices varied more widely than natural gas prices varied.

PARTICIPATION

- Participation in the EIS Market, which is voluntary, was robust in February 2007, with 77% of on-line capacity being made available to the EIS Market. (For the purposes of this Report, on-line capacity includes only Available and Self-Dispatched capacity.)
- Capacity made available to the EIS Market was consistently equal to a high percentage (about 93%) of average daily load in the SPP footprint.
- The five largest Market Participants control 73% of all generation capacity in the SPP footprint. Consistent with this (and as additional evidence of robust participation), these five accounted for 84% of all capacity made available to the EIS Market.
- For the capacity made available to the EIS Market, the dispatchable range averaged 50% which is another, more strict indication of robust participation. (Dispatchable range indicates the portion of the capacity that can be moved up and down as customer need varies.)
- The one possible concern with participation is low ramp rate; a ramp rate dictates how fast a power plant can be moved from one level of operation to the next. The average ramp rate per available resource was 2.34 MW per minute.

TRANSMISSION CONGESTION

- Prices in the EIS Market diverge by location when there is transmission congestion.
- Congestion was pervasive in time in the sense that prices at load diverged in 66% of all hours. For on-peak hours only, prices diverged in 78% of the hours. On average, prices in on-peak hours with congestion were 41% higher than in hours without congestion.
- We also wanted a sense of how many transmission facilities (flowgates) were causing the congestion in these intervals. We found that that the number of congested flowgates (“bottlenecks”) is small.

- To confirm this view that the transmission bottlenecks are few in number, we traced congestion to specific flowgates. We found that in 88% of all of the instances of congestion, the same 6 flowgates, including two temporary flowgates, were involved.

I. MARKET ACTIVITY

Table One
Electricity Sales in the EIS Market by Day
and for the Month

Day	MWh Sold by Market Participants	Dollars Received by Market Participants
2/1/2007	34,949	1,971,639
2/2/2007	34,070	1,821,259
2/3/2007	39,546	2,644,925
2/4/2007	30,620	1,485,333
2/5/2007	30,893	1,939,267
2/6/2007	32,329	1,785,757
2/7/2007	31,237	1,413,318
2/8/2007	34,706	2,332,233
2/9/2007	34,873	2,518,184
2/10/2007	36,213	2,341,242
2/11/2007	35,822	1,820,749
2/12/2007	32,339	1,462,428
2/13/2007	35,376	2,379,263
2/14/2007	45,100	4,190,633
2/15/2007	45,435	4,901,323
2/16/2007	49,774	3,660,385
2/17/2007	39,415	2,237,393
2/18/2007	34,552	1,628,092
2/19/2007	31,678	1,332,111
2/20/2007	33,774	1,201,676
2/21/2007	28,319	1,048,573
2/22/2007	31,524	1,241,816
2/23/2007	33,489	1,104,951
2/24/2007	35,846	1,506,148
2/25/2007	34,374	1,469,639
2/26/2007	28,700	1,265,879
2/27/2007	31,902	1,226,139
2/28/2007	35,583	1,034,602
Total	982,439	54,964,957

- 1) Source: SPP DSS.
- 2) A sale is made by a Market Participant when either (a) it generates more than it has scheduled and/or (b) its actual load is less than it has scheduled.

Table Two
Electricity Purchases in the EIS Market by Day
and for the Month

Day	MWh Purchased by Market Participants	Dollars Paid by Market Participants
2/1/2007	36,313	2,020,372
2/2/2007	34,440	1,793,341
2/3/2007	40,181	2,691,554
2/4/2007	30,395	1,505,408
2/5/2007	31,207	1,791,733
2/6/2007	32,231	1,251,460
2/7/2007	32,427	1,525,557
2/8/2007	36,021	2,634,330
2/9/2007	36,681	2,485,909
2/10/2007	37,321	2,414,945
2/11/2007	36,237	1,848,170
2/12/2007	33,694	1,574,100
2/13/2007	37,136	2,118,349
2/14/2007	46,960	3,223,090
2/15/2007	47,468	4,576,733
2/16/2007	49,685	3,340,457
2/17/2007	40,327	2,289,971
2/18/2007	34,040	1,709,348
2/19/2007	32,690	1,403,128
2/20/2007	35,778	1,364,416
2/21/2007	29,467	1,185,697
2/22/2007	33,027	1,359,280
2/23/2007	32,941	1,130,373
2/24/2007	35,515	1,457,618
2/25/2007	35,097	1,442,698
2/26/2007	30,481	1,354,284
2/27/2007	31,952	980,994
2/28/2007	35,869	1,103,474
Total	1,005,583	53,576,789

- 1) Source: SPP DSS.
- 2) A purchase is made by a Market Participant when either (a) it generates less than it has scheduled and/or (b) its actual load is more than it has scheduled.

II. PRICES

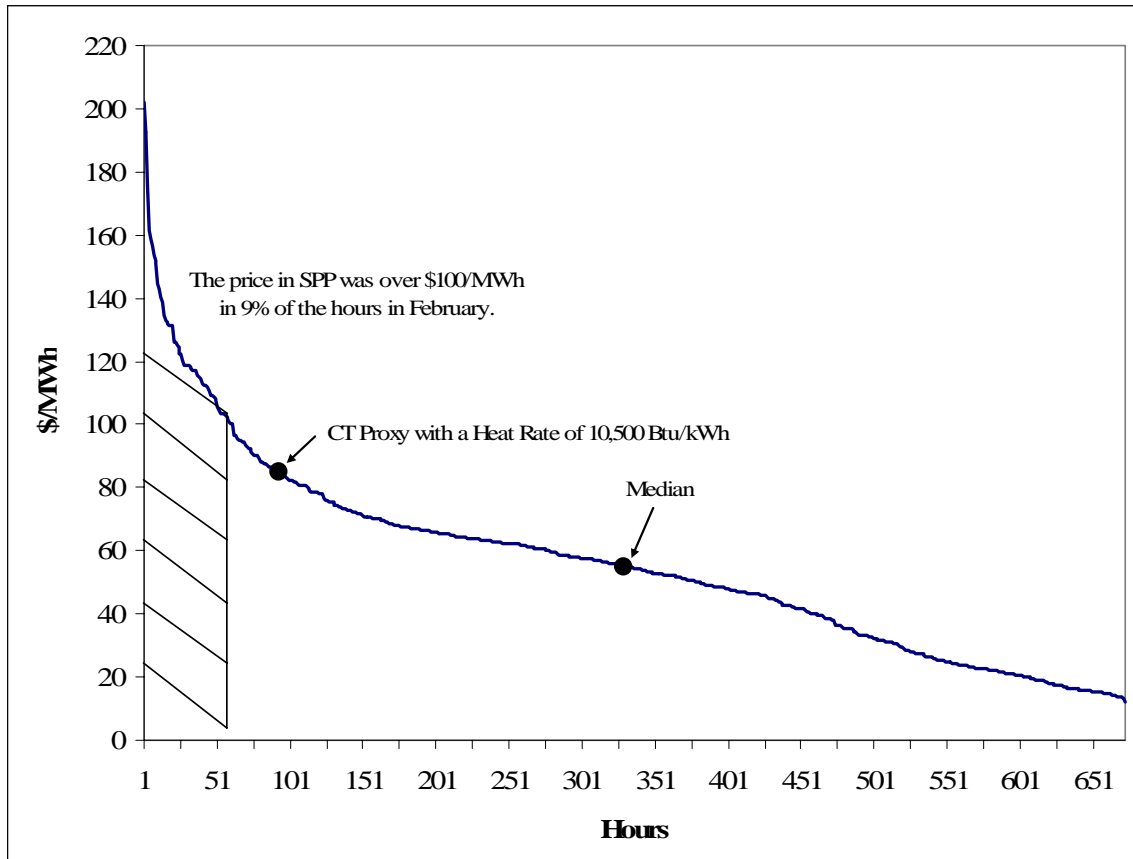
Table Three
Rough Comparison of SPP-Wide, MISO-Wide,
and ERCOT-Wide Hourly Price Statistics

Region	Average Price	Max. Price	Min. Price	Median Price	Volatility	Average On-Peak Price	Average Off-Peak Price
SPP	\$58.98	\$202.06	\$12.15	\$54.53	54%	\$68.22	\$49.50
MISO	\$62.67	\$249.52	\$6.27	\$55.52	58%	\$78.55	\$48.23
ERCOT	\$52.66	\$468.83	\$3.37	\$50.97	53%	\$57.66	\$48.11

Note: We use the term “rough comparison” because of inherent differences in the structure of the three markets. Also because of the difference in how prices for SPP, MISO, and ERCOT are calculated. For SPP prices, we used weighted averages and for MISO and ERCOT, we used simple averages.

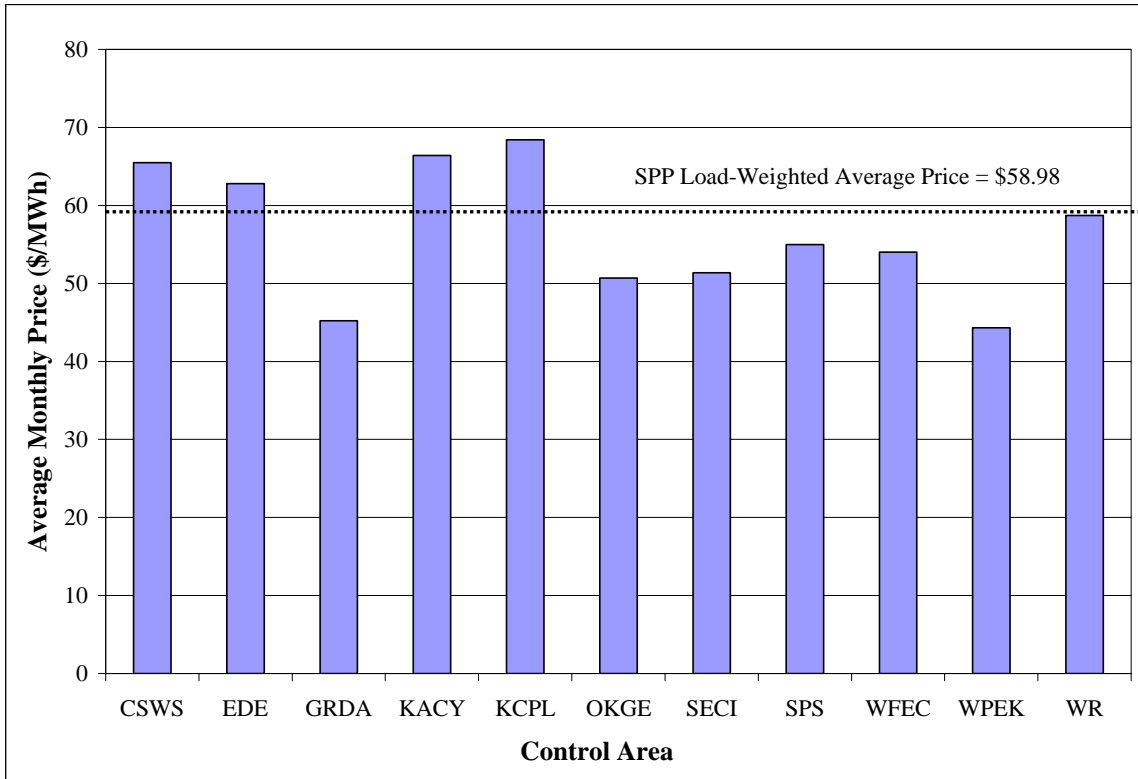
- 1) All prices are per MWh.
- 2) Note that SPP and MISO deploy on a 5-minute interval and both are nodal markets. ERCOT deploys on a 15-minute interval and is a zonal market.
- 3) For SPP, the average price is the weighted average of all hourly locational imbalance prices (LIPs) for eleven load settlement areas; weights are total hourly load in the footprint (not EIS-only load).
- 4) Because of interim data limitations, the averages for MISO and ERCOT are simple averages of hourly prices, not load weighted. Had we taken a simple average for SPP, SPP’s averages would have been lower. The average price would have been \$56.07, the average on-peak price \$65.61 and the average off-peak price \$47.40.
- 5) The maximum, minimum, and median prices are taken across all hours in the month.
- 6) Volatility is measured by Coefficient of Variation, which is the standard deviation across all hours divided by the simple average of hourly prices.
- 7) On-peak hours include hour-ending 7:00 am to hour-ending 10:00 pm. Off-peak hours are hour-ending 11:00 pm to hour-ending 6:00 am. Weekends and NERC holidays are also off-peak.
- 8) The SPP data is from the Market Operating System.
- 9) MISO data is publicly available at http://www.midwestiso.org/publish/Folder/10b1ff_101f945f78e_-75e70a48324a.
- 10) ERCOT data is publicly available at <http://www.ercot.com/mktinfo/services/bal/index.html>

Figure One
Price Duration Curve for the EIS Market



- 1) A price duration curve represents all hourly prices in descending order plotted against the hours that price level prevailed. It is not chronological.
- 2) The median price is \$54.30/MWh.
- 3) The CT Proxy reflects the average variable cost of operating a Combustion Turbine with a heat rate of 10,500 Btu/kWh and average trading day Henry Hub gas prices. The average is \$84.00/MWh – the SPP-wide price was above this level in 96 hours in February.

Figure Two
Average Price to Load by Load Settlement Location



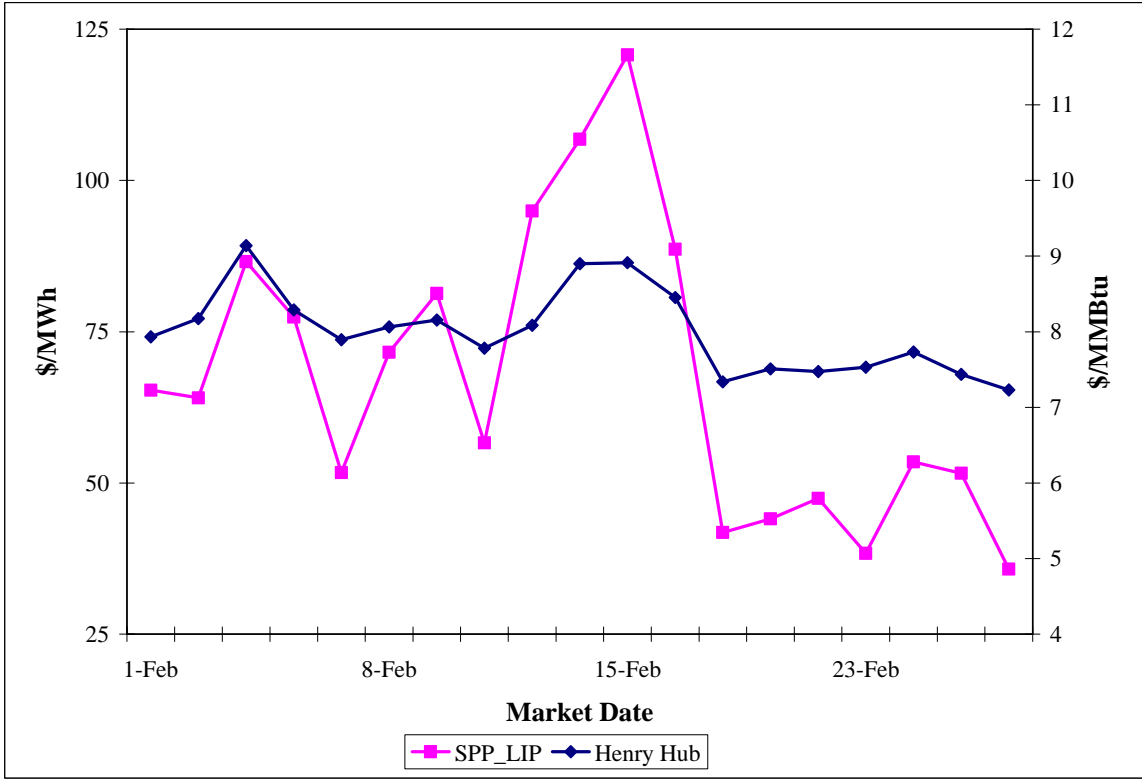
- 1) The price is the weighted average of all locational imbalance prices (LIPs) for the eleven load settlement areas, weighted by the total hourly load in the settlement area (not EIS-only load).

Table Four
Monthly Flagged Interval Prices Beyond Thresholds

Day	Less Than \$0		Between \$0 and \$100		Between \$100 and \$400		Greater Than \$400	
	Count	% of all observations	Count	% of all observations	Count	% of all observations	Count	% of all observations
2/1/2007	45	0.1%	81,486	99.6%	248	0.3%	13	0.0%
2/2/2007	460	0.6%	78,784	96.3%	2,490	3.0%	58	0.1%
2/3/2007	1,088	1.3%	77,283	94.5%	2,949	3.6%	472	0.6%
2/4/2007	2	0.0%	80,084	97.9%	1,706	2.1%	0	0.0%
2/5/2007	3,188	3.9%	70,474	86.2%	7,055	8.6%	1,075	1.3%
2/6/2007	4,780	5.8%	71,230	87.1%	4,874	6.0%	908	1.1%
2/7/2007	44	0.1%	81,137	99.2%	604	0.7%	7	0.0%
2/8/2007	397	0.5%	75,942	92.9%	5,358	6.6%	95	0.1%
2/9/2007	359	0.4%	75,575	92.4%	5,753	7.0%	105	0.1%
2/10/2007	0	0.0%	79,479	97.2%	2,313	2.8%	0	0.0%
2/11/2007	0	0.0%	81,506	99.7%	286	0.4%	0	0.0%
2/12/2007	10	0.0%	79,770	97.5%	2,010	2.5%	2	0.0%
2/13/2007	936	1.1%	74,050	90.5%	6,576	8.0%	230	0.3%
2/14/2007	1,307	1.6%	68,808	84.1%	11,406	14.0%	271	0.3%
2/15/2007	2,835	3.5%	60,121	73.5%	16,755	20.5%	2,081	2.5%
2/16/2007	2,058	2.5%	68,345	83.6%	10,808	13.2%	581	0.7%
2/17/2007	1,177	1.4%	76,690	93.8%	3,693	4.5%	232	0.3%
2/18/2007	2,588	3.2%	77,118	94.3%	2,086	2.6%	0	0.0%
2/19/2007	930	1.1%	80,040	97.9%	822	1.0%	0	0.0%
2/20/2007	0	0.0%	80,656	98.6%	1,136	1.4%	0	0.0%
2/21/2007	0	0.0%	79,804	97.6%	1,988	2.4%	0	0.0%
2/22/2007	1	0.0%	80,655	98.6%	1,136	1.4%	0	0.0%
2/23/2007	22	0.0%	80,200	98.1%	1,570	1.9%	0	0.0%
2/24/2007	916	1.1%	77,678	95.0%	3,044	3.7%	154	0.2%
2/25/2007	592	0.7%	79,768	97.5%	1,314	1.6%	118	0.1%
2/26/2007	315	0.4%	79,571	97.3%	1,852	2.3%	54	0.1%
2/27/2007	1,753	2.1%	76,082	93.0%	3,698	4.5%	259	0.3%
2/28/2007	59	0.1%	81,315	99.4%	350	0.4%	68	0.1%
Total	25,862	1.1%	2,153,651	94.0%	103,880	4.6%	6,783	0.3%

- 1) All prices are per MWh.
- 2) Counts are computed as the number of dispatch interval LIPs within a certain threshold anytime in a day for all settlement locations.
- 3) Percentage (%) of all observations is computed as the count of dispatch interval LIPs within a certain threshold divided by the total number of dispatch interval LIPs in a day for all settlement locations.

Figure Three
 Path of Daily Henry Hub Natural Gas Prices
 Compared to SPP On-Peak Daily Average



1) SPP On-Peak Daily Average LIPs represent the load-weighted average for all on-peak LIPs for each day.

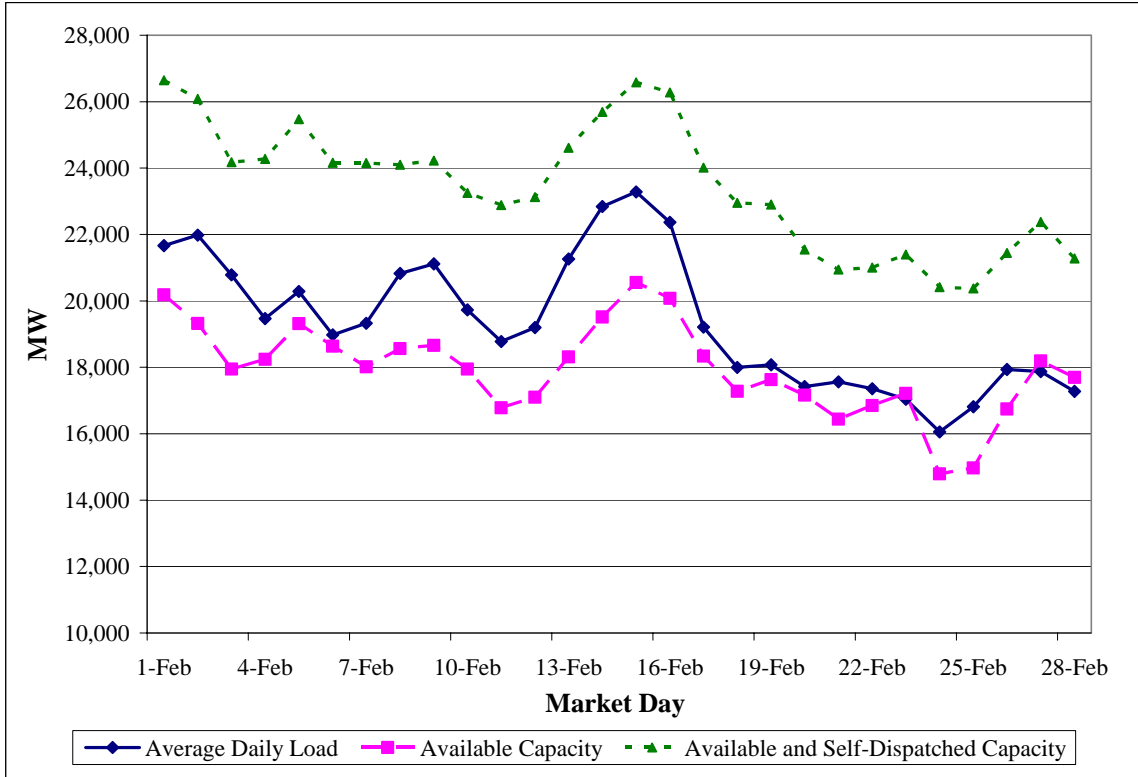
III.PARTICIPATION

Table Five
Percent of Total Capacity Made Available
to the EIS Market by Day and for the Month

Day	Available Capacity	Available and Self-Dispatch Capacity	SPP-Wide Availability
2/1/2007	20,184	26,645	76%
2/2/2007	19,319	26,085	74%
2/3/2007	17,946	24,181	74%
2/4/2007	18,241	24,279	75%
2/5/2007	19,317	25,474	76%
2/6/2007	18,636	24,159	77%
2/7/2007	18,014	24,157	75%
2/8/2007	18,561	24,098	77%
2/9/2007	18,661	24,230	77%
2/10/2007	17,947	23,251	77%
2/11/2007	16,781	22,886	73%
2/12/2007	17,099	23,127	74%
2/13/2007	18,311	24,615	74%
2/14/2007	19,513	25,693	76%
2/15/2007	20,553	26,582	77%
2/16/2007	20,078	26,278	76%
2/17/2007	18,338	24,011	76%
2/18/2007	17,274	22,950	75%
2/19/2007	17,628	22,904	77%
2/20/2007	17,162	21,547	80%
2/21/2007	16,441	20,943	79%
2/22/2007	16,847	21,006	80%
2/23/2007	17,216	21,397	80%
2/24/2007	14,789	20,414	72%
2/25/2007	14,969	20,376	73%
2/26/2007	16,745	21,445	78%
2/27/2007	18,193	22,377	81%
2/28/2007	17,696	21,280	83%
Average	17,945	23,443	77%

- 1) Available Capacity represents the sum of the Resource-Plan maximum for all Available generating units.
- 2) Available and Self-Dispatch Capacity represents the sum of the Resource-Plan maximum for all Available and Self-Dispatched generating units.
- 3) SPP-Wide Availability is the second column divided by the third.
- 4) Resources are not included if their status is Manual, Supplemental, or Unavailable.

Figure Four
Capacity Made Available
Compared to Load in the SPP Footprint



- 1) Average Daily Load is the average of the 24 hourly SPP load values for each day.
- 2) Available Capacity represents the sum of the Resource-Plan maximum for all Available generating units.
- 3) Available and Self-Dispatch Capacity represents the sum of the Resource-Plan maximum for all Available and Self-Dispatched generating units.

Table Six
 Dispatchable Range of Capacity Made
 Available to the EIS Market by Day and for the Month

Day	Available Capacity	Dispatchable Capacity	Percent Dispatchable
2/1/2007	20,184	10,055	50%
2/2/2007	19,319	9,680	50%
2/3/2007	17,946	8,876	49%
2/4/2007	18,241	8,974	49%
2/5/2007	19,317	9,279	48%
2/6/2007	18,636	9,203	49%
2/7/2007	18,014	9,089	50%
2/8/2007	18,561	9,278	50%
2/9/2007	18,661	9,062	49%
2/10/2007	17,947	9,019	50%
2/11/2007	16,781	8,225	49%
2/12/2007	17,099	8,550	50%
2/13/2007	18,311	9,642	53%
2/14/2007	19,513	9,947	51%
2/15/2007	20,553	10,297	50%
2/16/2007	20,078	10,096	50%
2/17/2007	18,338	9,282	51%
2/18/2007	17,274	8,797	51%
2/19/2007	17,628	8,999	51%
2/20/2007	17,162	8,771	51%
2/21/2007	16,441	8,325	51%
2/22/2007	16,847	8,458	50%
2/23/2007	17,216	8,644	50%
2/24/2007	14,789	7,346	50%
2/25/2007	14,969	7,620	51%
2/26/2007	16,745	8,207	49%
2/27/2007	18,193	8,216	45%
2/28/2007	17,696	7,932	45%
Total	502,458	249,872	50%

- 1) Available Capacity represents the sum of the Resource-Plan max for all Available generating units.
- 2) The Dispatchable Capacity is calculated using the Resource Plan and reserve designation. The upper level of the Dispatchable Capacity is equal to Maximum Economic Limit which is the Resource-Plan maximum minus Regulation Up and reserve services. The lower level of the Dispatchable Capacity is equal to the Minimum Economic Limit which is the Resource-Plan minimum plus Regulation Down service.
- 3) Percent Dispatchable is the Dispatchable Capacity divided by the Available Capacity.

IV. TRANSMISSION CONGESTION

Table Seven
Price Divergence as a
Rough Indicator of Transmission Congestion

Day	% of Hours with Price Divergence			Average On-Peak LIP without Congestion	Average On-Peak LIP with Congestion
	Off-Peak	On-Peak	Total		
2/1/2007	25%	31%	29%	\$61.45	\$64.78
2/2/2007	13%	63%	46%	\$52.17	\$67.03
2/3/2007	29%	NA	29%	NA	NA
2/4/2007	33%	NA	33%	NA	NA
2/5/2007	0%	100%	67%	NA	\$86.59
2/6/2007	50%	100%	83%	NA	\$77.42
2/7/2007	88%	25%	46%	\$48.49	\$61.13
2/8/2007	75%	88%	83%	\$69.72	\$71.88
2/9/2007	38%	100%	79%	NA	\$81.33
2/10/2007	4%	NA	4%	NA	NA
2/11/2007	8%	NA	8%	NA	NA
2/12/2007	25%	44%	38%	\$56.10	\$57.28
2/13/2007	100%	100%	100%	NA	\$77.10
2/14/2007	100%	100%	100%	NA	\$97.14
2/15/2007	100%	100%	100%	NA	\$117.89
2/16/2007	75%	100%	92%	NA	\$90.19
2/17/2007	79%	NA	79%	NA	\$63.49
2/18/2007	58%	NA	58%	NA	\$45.52
2/19/2007	100%	63%	75%	\$48.70	\$42.71
2/20/2007	100%	100%	100%	NA	\$41.83
2/21/2007	88%	94%	92%	\$72.29	\$42.12
2/22/2007	88%	88%	88%	\$63.18	\$45.15
2/23/2007	75%	81%	79%	\$49.51	\$35.72
2/24/2007	88%	NA	88%	NA	NA
2/25/2007	67%	NA	67%	NA	NA
2/26/2007	75%	50%	58%	\$47.62	\$59.18
2/27/2007	63%	75%	71%	\$21.27	\$61.30
2/28/2007	75%	63%	67%	\$41.36	\$32.34
Total	56%	78%	66%	\$51.50	\$72.75

- 1) All prices are load-weighted and are per MWh.
- 2) LIPs diverge across locations only when congestion occurs. Congestion in a single 5-minute interval will result in price divergence being reported for that hour for this table.
- 3) The percentages represented here are out of the hours in that period (16 for On-Peak and 8 for Off-Peak during the week and 24 hours for Off-Peak during the weekend and NERC Holidays. President's Day is not considered a NERC Holiday). For example, 4 hours of peak congestion would show 25%.

Table Eight
Transmission Congestion Summary
by Flowgate for the Month

Flowgate Name	Control Area	Count of Congested Intervals	Count of Binding Intervals	Count of Violated Intervals
SPP to SPS Ties	SPP-SPS	1812	1801	11
Flint Creek to Tontitown	CSWS	824	132	692
Stilwell to Peculiar *	KCPL	705	439	266
Flint Creek to Tontitown *	CSWS	670	56	614
SPS North South	SPS	459	453	6
Atlas Junction to Carthage	EDE-SPA	399	363	36
Valliant Transformer	CSWS	231	120	111
Judson Large to Greensburg	WPEK	211	139	72
Wilburt to Livonia	EES	95	9	86
Broken Bow Dam to Clayton	SPA-CSWS	47	37	10
Pecan Transformer	OKGE	40	40	0
Hugo to Valliant	WFEC-CSWS	16	14	2
Overton to Sibley	MISO-MPS	13	8	5
S. Coffeyville to Dearing	CSWS-WR	9	8	1
Bartlesville SE to Bartlesville N	CSWS	8	8	0
Creswell to Newkirk / Kildare	WR-OKGE	7	7	0
Okmulgee to East Central Henryetta	CSWS	2	2	0
N. W. Texarkana to Patterson	CSWS	2	2	0
Total Flowgate-Intervals		5550	3638	1912

* Indicates temporary flowgates. To get the names we matched the NERC TLRs to the SPP TLRs.

- 1) This table was created by SPP.
- 2) Flowgate Name is the list of the flowgates that were congested during the month.
- 3) Count of Congested Intervals is the count of intervals in which the flowgate was congested during the month. The table is sorted in descending order by this column.
- 4) Count of Binding Intervals is the count of intervals in which the flowgate limit was binding during the month.
- 5) Count of Violating Intervals is the count of intervals in which the flowgate limit was violated during the month.
- 6) A Flowgate-Interval is defined as one flowgate per five minute interval. The total number of Flowgate-Intervals in a month is equal to the number of flowgates multiplied by the number of intervals in the month (12*24*28).

APPENDICES

Table A:
Average Prices by Day for
Load Settlement Locations and SPP-Wide

Market Day	SPP	CSWS	EDE	GRDA	KACY	KCPL	OKGE	SECI	SPS	WFEC	WPEK	WR
2/1/2007	57.78	61.66	58.39	53.27	55.94	56.35	56.35	55.95	56.10	56.43	56.24	56.21
2/2/2007	57.10	61.87	59.43	44.73	64.65	65.58	50.94	54.34	52.07	51.87	53.39	57.56
2/3/2007	69.83	66.90	69.03	62.92	85.65	88.53	62.84	68.10	70.62	64.72	56.74	72.95
2/4/2007	48.32	48.56	48.52	47.95	47.39	47.39	48.07	47.49	49.86	48.80	47.46	47.42
2/5/2007	71.80	62.02	72.60	51.68	121.15	128.29	53.31	67.37	59.39	57.38	39.20	87.33
2/6/2007	63.42	58.51	57.76	46.92	103.98	113.27	49.91	52.75	49.35	70.47	19.52	69.45
2/7/2007	46.68	46.19	46.29	46.08	45.35	45.86	46.47	45.56	49.67	47.44	45.77	45.87
2/8/2007	67.75	66.95	63.11	65.51	64.53	64.73	67.42	65.20	76.27	71.55	64.98	64.71
2/9/2007	76.39	92.66	80.03	52.76	72.32	72.45	68.23	70.44	69.22	70.27	70.46	71.79
2/10/2007	64.32	64.58	64.37	64.25	64.06	64.19	64.29	64.10	64.19	64.30	64.11	64.17
2/11/2007	49.57	49.87	50.00	49.45	49.47	49.62	49.19	49.47	49.67	49.54	49.13	49.30
2/12/2007	46.80	46.66	46.56	44.99	45.70	46.37	45.83	45.79	50.20	45.26	46.33	46.21
2/13/2007	77.10	116.36	95.78	28.84	68.65	70.64	53.43	57.77	65.97	58.14	56.92	64.63
2/14/2007	97.14	148.56	124.31	35.52	91.42	92.43	64.73	73.84	72.34	71.82	71.02	82.41
2/15/2007	117.89	150.63	123.11	52.74	148.29	152.85	79.40	99.21	100.88	89.01	70.50	116.20
2/16/2007	86.91	103.74	101.38	43.34	113.23	116.27	61.31	75.54	69.10	68.87	58.05	91.04
2/17/2007	60.49	65.29	65.72	46.32	71.14	72.18	52.06	51.47	54.39	54.46	42.24	63.39
2/18/2007	39.26	42.19	42.86	42.15	41.93	42.76	41.97	11.21	27.46	41.82	(21.39)	46.41
2/19/2007	41.97	42.88	43.20	42.64	42.65	43.17	42.62	33.01	38.96	42.91	23.57	43.84
2/20/2007	35.61	33.03	33.19	33.05	32.59	33.09	33.05	32.58	49.38	33.21	32.73	32.95
2/21/2007	38.61	35.62	36.09	35.59	35.39	35.66	35.75	35.29	54.40	35.81	35.39	35.58
2/22/2007	40.78	39.10	38.90	38.60	38.56	39.04	38.83	38.43	50.51	38.77	38.75	38.94
2/23/2007	34.38	34.09	34.51	33.85	33.93	34.16	34.06	32.49	36.15	34.13	31.59	34.17
2/24/2007	47.58	44.52	48.52	41.72	68.83	71.30	41.03	40.96	41.55	42.72	33.81	52.95
2/25/2007	44.02	42.00	43.82	40.43	54.89	56.48	40.19	39.05	42.95	40.85	35.33	46.09
2/26/2007	47.35	46.43	47.73	45.24	54.05	54.59	45.11	44.83	45.65	45.47	42.69	48.97
2/27/2007	43.13	39.07	43.49	33.50	69.79	72.53	33.23	38.70	37.01	36.12	24.81	50.43
2/28/2007	30.18	28.90	28.78	28.34	29.72	30.01	28.50	28.15	36.80	28.48	27.70	29.12

Table B:
Average Prices by Hour for
Load Settlement Locations and SPP-Wide

Hour Ending CPT	SPP	CSWS	EDE	GRDA	KACY	KCPL	OKGE	SECI	SPS	WFEC	WPEK	WR
2/1/2007 1:00	31.78	31.78	31.78	31.78	31.78	31.78	31.78	31.78	31.78	31.78	31.78	31.78
2/1/2007 2:00	22.80	22.80	22.80	22.80	22.80	22.80	22.80	22.80	22.80	22.80	22.80	22.80
2/1/2007 3:00	38.73	38.73	38.73	38.73	38.73	38.73	38.73	38.73	38.73	38.73	38.73	38.73
2/1/2007 4:00	39.62	39.62	39.62	39.62	39.62	39.62	39.62	39.62	39.62	39.62	39.62	39.62
2/1/2007 5:00	48.31	48.31	48.31	48.31	48.31	48.31	48.31	48.31	48.31	48.31	48.31	48.31
2/1/2007 6:00	60.94	60.94	60.94	60.94	60.94	60.94	60.94	60.94	60.94	60.94	60.94	60.94
2/1/2007 7:00	59.88	59.88	59.88	59.88	59.88	59.88	59.88	59.88	59.88	59.88	59.88	59.88
2/1/2007 8:00	62.40	62.40	62.40	62.40	62.40	62.40	62.40	62.40	62.40	62.40	62.40	62.40
2/1/2007 9:00	61.71	61.71	61.71	61.71	61.71	61.71	61.71	61.71	61.71	61.71	61.71	61.71
2/1/2007 10:00	63.33	63.33	63.33	63.33	63.33	63.33	63.33	63.33	63.33	63.33	63.33	63.33
2/1/2007 11:00	80.85	105.51	93.18	45.63	73.91	74.06	68.46	71.26	69.00	71.30	71.19	73.07
2/1/2007 12:00	63.08	63.08	63.08	63.08	63.08	63.08	63.08	63.08	63.08	63.08	63.08	63.08
2/1/2007 13:00	62.41	62.41	62.41	62.41	62.41	62.41	62.41	62.41	62.41	62.41	62.41	62.41
2/1/2007 14:00	63.58	63.58	63.58	63.58	63.58	63.58	63.58	63.58	63.58	63.58	63.58	63.58
2/1/2007 15:00	61.26	61.26	61.26	61.26	61.26	61.26	61.26	61.26	61.26	61.26	61.26	61.26
2/1/2007 16:00	57.47	57.47	57.47	57.47	57.47	57.47	57.47	57.47	57.47	57.47	57.47	57.47
2/1/2007 17:00	62.54	62.54	62.54	62.54	62.54	62.54	62.54	62.54	62.54	62.54	62.54	62.54
2/1/2007 18:00	66.70	70.87	68.84	60.64	65.49	65.51	64.55	65.06	64.66	65.05	65.03	65.34
2/1/2007 19:00	80.63	103.36	92.13	47.52	74.02	74.15	68.89	71.70	69.50	71.64	71.54	73.24
2/1/2007 20:00	71.07	77.14	74.20	62.18	69.33	69.36	67.95	68.70	68.10	68.68	68.65	69.11
2/1/2007 21:00	68.81	72.25	70.58	63.79	67.83	67.85	67.06	67.48	67.14	67.46	67.45	67.71
2/1/2007 22:00	58.07	58.07	58.07	58.07	58.07	58.07	58.07	58.07	58.07	58.07	58.07	58.07
2/1/2007 23:00	50.73	59.81	44.69	47.22	43.62	43.62	49.56	45.89	50.33	49.12	45.51	44.08
2/2/2007 0:00	28.73	46.00	17.32	22.08	15.28	15.26	26.52	19.60	27.99	25.71	18.88	16.14

Table B:
Average Prices by Hour for
Load Settlement Locations and SPP-Wide

Hour Ending CPT	SPP	CSWS	EDE	GRDA	KACY	KCPL	OKGE	SECI	SPS	WFEC	WPEK	WR
2/2/2007 1:00	20.37	25.51	16.97	18.39	16.37	16.36	19.71	17.65	20.15	19.47	17.44	16.63
2/2/2007 2:00	43.02	43.02	43.02	43.02	43.02	43.02	43.02	43.02	43.02	43.02	43.02	43.02
2/2/2007 3:00	16.43	16.43	16.43	16.43	16.43	16.43	16.43	16.43	16.43	16.43	16.43	16.43
2/2/2007 4:00	16.43	16.43	16.43	16.43	16.43	16.43	16.43	16.43	16.43	16.43	16.43	16.43
2/2/2007 5:00	30.98	30.98	30.98	30.98	30.98	30.98	30.98	30.98	30.98	30.98	30.98	30.98
2/2/2007 6:00	53.93	53.93	53.93	53.93	53.93	53.93	53.93	53.93	53.93	53.93	53.93	53.93
2/2/2007 7:00	72.11	72.11	72.11	72.11	72.11	72.11	72.11	72.11	72.11	72.11	72.11	72.11
2/2/2007 8:00	68.74	68.74	68.74	68.74	68.74	68.74	68.74	68.74	68.74	68.74	68.74	68.74
2/2/2007 9:00	80.89	93.14	86.60	55.06	87.90	87.27	70.18	76.33	72.79	71.22	79.10	79.57
2/2/2007 10:00	92.49	129.00	109.72	29.39	97.18	96.38	67.80	78.73	71.92	71.34	82.59	84.59
2/2/2007 11:00	69.43	50.23	57.55	60.35	119.87	116.85	59.56	77.31	68.94	55.56	89.81	86.42
2/2/2007 12:00	65.65	41.56	50.68	54.18	128.64	124.86	53.13	75.31	64.70	48.18	90.89	86.73
2/2/2007 13:00	45.41	45.41	45.41	45.41	45.41	45.41	45.41	45.41	45.41	45.41	45.41	45.41
2/2/2007 14:00	25.74	29.34	23.51	24.48	23.10	23.09	25.34	23.99	25.60	25.18	23.83	23.27
2/2/2007 15:00	25.19	30.63	21.83	23.29	21.20	21.19	24.59	22.54	24.99	24.35	22.31	21.46
2/2/2007 16:00	20.23	20.23	20.23	20.23	20.23	20.23	20.23	20.23	20.23	20.23	20.23	20.23
2/2/2007 17:00	46.20	46.20	46.20	46.20	46.20	46.20	46.20	46.20	46.20	46.20	46.20	46.20
2/2/2007 18:00	56.36	56.36	56.36	56.36	56.36	56.36	56.36	56.36	56.36	56.36	56.36	56.36
2/2/2007 19:00	92.88	126.18	110.59	32.83	107.94	111.31	65.39	76.30	68.31	71.94	59.88	87.08
2/2/2007 20:00	94.76	114.30	107.30	45.60	130.16	135.46	67.41	83.56	70.15	74.14	55.17	97.01
2/2/2007 21:00	76.22	102.31	89.57	38.93	68.61	68.75	62.95	66.00	63.52	65.96	65.81	67.73
2/2/2007 22:00	79.29	82.31	82.49	63.21	100.96	103.85	68.26	75.01	70.27	71.08	60.38	82.97
2/2/2007 23:00	67.88	67.88	67.88	67.88	67.88	67.88	67.88	67.88	67.88	67.88	67.88	67.88
2/3/2007 0:00	74.58	74.58	74.58	74.58	74.58	74.58	74.58	74.58	74.58	74.58	74.58	74.58

Table B:
Average Prices by Hour for
Load Settlement Locations and SPP-Wide

Hour Ending CPT	SPP	CSWS	EDE	GRDA	KACY	KCPL	OKGE	SECI	SPS	WFEC	WPEK	WR
2/3/2007 1:00	78.84	78.84	78.84	78.84	78.84	78.84	78.84	78.84	78.84	78.84	78.84	78.84
2/3/2007 2:00	70.08	70.08	70.08	70.08	70.08	70.08	70.08	70.08	70.08	70.08	70.08	70.08
2/3/2007 3:00	78.63	78.63	78.63	78.63	78.63	78.63	78.63	78.63	78.63	78.63	78.63	78.63
2/3/2007 4:00	69.61	69.61	69.61	69.61	69.61	69.61	69.61	69.61	69.61	69.61	69.61	69.61
2/3/2007 5:00	68.11	68.11	68.11	68.11	68.11	68.11	68.11	68.11	68.11	68.11	68.11	68.11
2/3/2007 6:00	70.69	70.69	70.69	70.69	70.69	70.69	70.69	70.69	70.69	70.69	70.69	70.69
2/3/2007 7:00	62.80	62.80	62.80	62.80	62.80	62.80	62.80	62.80	62.80	62.80	62.80	62.80
2/3/2007 8:00	71.55	71.55	71.55	71.55	71.55	71.55	71.55	71.55	71.55	71.55	71.55	71.55
2/3/2007 9:00	71.66	71.66	71.66	71.66	71.66	71.66	71.66	71.66	71.66	71.66	71.66	71.66
2/3/2007 10:00	75.21	80.33	78.32	67.22	73.69	73.73	72.42	73.12	72.57	73.03	73.07	73.66
2/3/2007 11:00	70.70	70.70	70.70	70.70	70.70	70.70	70.70	70.70	70.70	70.70	70.70	70.70
2/3/2007 12:00	65.59	65.59	65.59	65.59	65.59	65.59	65.59	65.59	65.59	65.59	65.59	65.59
2/3/2007 13:00	64.55	64.55	64.55	64.55	64.55	64.55	64.55	64.55	64.55	64.55	64.55	64.55
2/3/2007 14:00	56.74	56.74	56.74	56.74	56.74	56.74	56.74	56.74	56.74	56.74	56.74	56.74
2/3/2007 15:00	34.56	34.56	34.56	34.56	34.56	34.56	34.56	34.56	34.56	34.56	34.56	34.56
2/3/2007 16:00	45.95	45.95	45.95	45.95	45.95	45.95	45.95	45.95	45.95	45.95	45.95	45.95
2/3/2007 17:00	45.76	45.76	45.76	45.76	45.76	45.76	45.76	45.76	45.76	45.76	45.76	45.76
2/3/2007 18:00	70.85	62.42	69.80	52.85	124.65	131.16	51.28	65.61	55.93	56.44	31.77	83.37
2/3/2007 19:00	96.65	84.89	95.19	70.52	175.45	184.95	68.09	89.09	74.98	75.73	39.36	115.01
2/3/2007 20:00	144.80	119.32	144.74	86.87	330.99	353.13	79.88	151.19	82.62	97.37	21.05	192.07
2/3/2007 21:00	84.03	77.24	83.93	68.40	133.94	139.91	66.64	83.97	68.50	71.34	50.28	96.56
2/3/2007 22:00	66.40	62.79	66.11	58.22	91.60	94.66	57.40	64.51	60.25	59.83	48.60	72.44
2/3/2007 23:00	67.43	43.00	42.90	42.99	42.76	42.76	43.02	40.15	214.58	42.98	42.09	42.69
2/4/2007 0:00	32.64	32.64	32.64	32.64	32.64	32.64	32.64	32.64	32.64	32.64	32.64	32.64

Table B:
Average Prices by Hour for
Load Settlement Locations and SPP-Wide

Hour Ending CPT	SPP	CSWS	EDE	GRDA	KACY	KCPL	OKGE	SECI	SPS	WFEC	WPEK	WR
2/4/2007 1:00	46.27	46.27	46.27	46.27	46.27	46.27	46.27	46.27	46.27	46.27	46.27	46.27
2/4/2007 2:00	42.96	42.96	42.96	42.96	42.96	42.96	42.96	42.96	42.96	42.96	42.96	42.96
2/4/2007 3:00	51.31	53.74	49.75	50.41	49.46	49.46	51.01	50.06	51.20	50.89	49.97	49.59
2/4/2007 4:00	56.10	56.10	56.10	56.10	56.10	56.10	56.10	56.10	56.10	56.10	56.10	56.10
2/4/2007 5:00	52.30	52.30	52.30	52.30	52.30	52.30	52.30	52.30	52.30	52.30	52.30	52.30
2/4/2007 6:00	54.47	54.47	54.47	54.47	54.47	54.47	54.47	54.47	54.47	54.47	54.47	54.47
2/4/2007 7:00	55.47	55.47	55.47	55.47	55.47	55.47	55.47	55.47	55.47	55.47	55.47	55.47
2/4/2007 8:00	112.05	111.93	111.77	111.79	111.89	111.89	112.29	112.13	112.27	112.42	112.03	111.91
2/4/2007 9:00	65.66	65.66	65.66	65.66	65.66	65.66	65.66	65.66	65.66	65.66	65.66	65.66
2/4/2007 10:00	63.27	63.27	63.27	63.27	63.27	63.27	63.27	63.27	63.27	63.27	63.27	63.27
2/4/2007 11:00	54.73	53.56	53.54	53.56	53.53	53.53	53.57	53.55	61.38	53.56	53.55	53.53
2/4/2007 12:00	52.89	49.97	49.93	49.97	49.88	49.88	49.99	49.95	69.39	49.97	49.94	49.90
2/4/2007 13:00	48.94	46.77	46.74	46.76	46.71	46.71	46.78	46.76	61.17	46.77	46.74	46.72
2/4/2007 14:00	22.54	22.07	22.06	22.07	22.06	22.06	22.08	22.07	25.17	22.07	22.07	22.06
2/4/2007 15:00	14.42	14.42	14.42	14.42	14.42	14.42	14.42	14.42	14.42	14.42	14.42	14.42
2/4/2007 16:00	14.80	14.32	14.32	14.32	14.31	14.31	14.33	14.32	17.52	14.32	14.32	14.31
2/4/2007 17:00	28.23	28.23	28.23	28.23	28.23	28.23	28.23	28.23	28.23	28.23	28.23	28.23
2/4/2007 18:00	29.36	29.36	29.36	29.36	29.36	29.36	29.36	29.36	29.36	29.36	29.36	29.36
2/4/2007 19:00	50.01	50.01	50.01	50.01	50.01	50.01	50.01	50.01	50.01	50.01	50.01	50.01
2/4/2007 20:00	46.76	45.91	46.87	47.07	46.80	46.80	47.29	47.02	47.24	47.20	46.99	46.87
2/4/2007 21:00	50.28	50.28	50.28	50.28	50.28	50.28	50.28	50.28	50.28	50.28	50.28	50.28
2/4/2007 22:00	54.27	54.27	54.27	54.27	54.27	54.27	54.27	54.27	54.27	54.27	54.27	54.27
2/4/2007 23:00	53.85	53.85	53.85	53.85	53.85	53.85	53.85	53.85	53.85	53.85	53.85	53.85
2/5/2007 0:00	22.24	22.24	22.24	22.24	22.24	22.24	22.24	22.24	22.24	22.24	22.24	22.24

Table B:
Average Prices by Hour for
Load Settlement Locations and SPP-Wide

Hour Ending CPT	SPP	CSWS	EDE	GRDA	KACY	KCPL	OKGE	SECI	SPS	WFEC	WPEK	WR
2/5/2007 1:00	20.57	20.57	20.57	20.57	20.57	20.57	20.57	20.57	20.57	20.57	20.57	20.57
2/5/2007 2:00	36.06	36.06	36.06	36.06	36.06	36.06	36.06	36.06	36.06	36.06	36.06	36.06
2/5/2007 3:00	27.63	27.63	27.63	27.63	27.63	27.63	27.63	27.63	27.63	27.63	27.63	27.63
2/5/2007 4:00	39.67	39.67	39.67	39.67	39.67	39.67	39.67	39.67	39.67	39.67	39.67	39.67
2/5/2007 5:00	48.57	48.57	48.57	48.57	48.57	48.57	48.57	48.57	48.57	48.57	48.57	48.57
2/5/2007 6:00	62.25	62.25	62.25	62.25	62.25	62.25	62.25	62.25	62.25	62.25	62.25	62.25
2/5/2007 7:00	101.99	101.48	102.56	95.30	114.79	116.23	96.60	100.50	97.90	97.75	93.49	105.30
2/5/2007 8:00	138.98	159.21	156.90	41.42	249.38	262.63	76.55	115.23	88.84	90.05	49.83	161.37
2/5/2007 9:00	71.78	79.38	75.61	57.48	72.51	73.02	65.39	67.48	70.13	66.72	65.13	69.53
2/5/2007 10:00	65.66	65.36	65.01	63.76	64.46	64.46	64.37	64.42	71.32	64.43	64.40	64.44
2/5/2007 11:00	88.32	74.09	85.89	64.30	159.46	168.33	62.08	82.55	72.52	67.61	41.62	110.02
2/5/2007 12:00	131.56	70.34	126.37	59.89	365.08	393.99	56.80	118.88	78.99	73.66	(14.38)	205.41
2/5/2007 13:00	126.03	39.63	127.76	38.74	365.15	393.41	56.31	124.48	83.13	72.36	0.30	214.22
2/5/2007 14:00	41.84	36.15	42.63	43.94	42.12	42.12	45.34	43.70	45.15	44.98	43.47	42.62
2/5/2007 15:00	67.60	52.56	65.43	47.37	128.64	136.71	46.20	62.71	52.21	50.73	28.28	86.40
2/5/2007 16:00	58.17	46.65	55.82	39.20	112.00	119.08	37.91	53.00	43.19	41.92	22.62	74.45
2/5/2007 17:00	56.71	46.55	55.49	35.55	114.64	123.26	34.26	49.27	39.00	39.87	10.28	71.02
2/5/2007 18:00	117.44	91.36	113.77	63.72	262.06	283.19	60.50	97.89	72.16	74.46	0.36	152.61
2/5/2007 19:00	108.82	77.89	116.85	87.50	202.84	212.30	66.70	109.12	84.25	75.27	73.19	152.96
2/5/2007 20:00	83.11	74.00	82.34	64.97	135.53	142.77	63.03	76.02	68.18	67.96	42.09	96.31
2/5/2007 21:00	61.92	60.76	60.75	60.77	60.73	60.73	60.78	60.76	69.02	60.77	60.75	60.74
2/5/2007 22:00	54.91	53.46	53.45	53.47	53.42	53.42	53.48	53.45	63.57	53.47	53.45	53.43
2/5/2007 23:00	46.98	46.98	46.98	46.98	46.98	46.98	46.98	46.98	46.98	46.98	46.98	46.98
2/6/2007 0:00	24.86	24.86	24.86	24.86	24.86	24.86	24.86	24.86	24.86	24.86	24.86	24.86

Table B:
Average Prices by Hour for
Load Settlement Locations and SPP-Wide

Hour Ending CPT	SPP	CSWS	EDE	GRDA	KACY	KCPL	OKGE	SECI	SPS	WFEC	WPEK	WR
2/6/2007 1:00	29.69	31.20	25.76	29.11	25.63	25.62	31.59	27.20	30.01	42.17	26.68	25.82
2/6/2007 2:00	30.80	31.11	30.00	30.68	29.98	29.98	31.17	30.29	30.85	33.29	30.19	30.01
2/6/2007 3:00	35.91	35.91	35.91	35.91	35.91	35.91	35.91	35.91	35.91	35.91	35.91	35.91
2/6/2007 4:00	28.06	28.06	28.06	28.06	28.06	28.06	28.06	28.06	28.06	28.06	28.06	28.06
2/6/2007 5:00	31.39	31.39	31.39	31.39	31.39	31.39	31.39	31.39	31.39	31.39	31.39	31.39
2/6/2007 6:00	62.59	65.49	52.23	61.43	51.90	51.87	68.15	56.14	63.56	96.53	54.73	52.39
2/6/2007 7:00	104.41	91.71	98.83	70.67	196.93	211.21	71.99	89.86	76.64	95.48	24.50	124.57
2/6/2007 8:00	132.99	112.85	122.13	78.17	282.42	304.80	81.34	108.54	88.14	124.96	1.23	164.30
2/6/2007 9:00	90.41	81.96	83.83	69.58	156.14	166.69	68.85	75.91	67.99	99.04	26.28	101.67
2/6/2007 10:00	50.94	50.93	50.43	55.96	50.64	51.06	52.63	47.75	48.51	60.87	46.17	48.76
2/6/2007 11:00	86.33	78.01	71.11	52.23	172.51	189.88	68.67	59.90	61.04	108.98	(31.72)	83.59
2/6/2007 12:00	67.01	66.69	55.05	58.31	88.24	93.65	64.28	52.83	57.02	102.27	26.30	61.05
2/6/2007 13:00	51.86	51.54	46.65	47.68	60.94	63.09	50.15	46.22	47.65	66.98	36.33	50.24
2/6/2007 14:00	94.77	79.35	84.65	50.77	207.95	229.16	54.64	72.02	59.87	95.08	(9.48)	119.32
2/6/2007 15:00	78.70	70.16	68.62	51.02	148.18	159.69	56.10	62.47	57.21	89.08	12.23	90.42
2/6/2007 16:00	19.08	19.30	18.41	18.94	18.63	18.66	19.40	18.63	19.05	21.27	18.38	18.48
2/6/2007 17:00	17.29	17.42	16.77	17.07	17.27	17.35	17.42	16.90	17.18	18.86	16.50	16.91
2/6/2007 18:00	95.26	77.96	85.58	45.62	223.33	244.00	49.86	69.97	55.80	90.40	(17.06)	121.86
2/6/2007 19:00	111.00	95.87	99.58	67.45	221.03	238.55	72.41	86.96	76.18	113.80	9.37	131.32
2/6/2007 20:00	91.04	83.23	79.20	64.24	154.26	165.20	70.22	73.44	70.07	109.05	24.62	99.09
2/6/2007 21:00	90.24	79.82	79.82	59.79	167.18	179.77	64.50	70.85	65.36	100.45	15.83	102.53
2/6/2007 22:00	38.52	39.54	35.61	38.38	35.51	35.50	40.38	36.74	38.66	48.17	36.31	35.65
2/6/2007 23:00	26.20	26.20	26.20	26.20	26.20	26.20	26.20	26.20	26.20	26.20	26.20	26.20
2/7/2007 0:00	13.86	13.81	13.81	13.81	13.81	13.81	13.81	13.81	14.13	13.81	13.81	13.81

Table B:
Average Prices by Hour for
Load Settlement Locations and SPP-Wide

Hour Ending CPT	SPP	CSWS	EDE	GRDA	KACY	KCPL	OKGE	SECI	SPS	WFEC	WPEK	WR
2/7/2007 1:00	15.30	14.82	14.82	14.82	14.81	14.81	14.83	14.82	17.88	14.83	14.82	14.81
2/7/2007 2:00	18.80	18.62	18.62	18.62	18.62	18.62	18.62	18.62	19.75	18.62	18.62	18.62
2/7/2007 3:00	15.05	14.99	14.99	14.99	14.99	14.99	14.99	14.99	15.35	14.99	14.99	14.99
2/7/2007 4:00	17.81	17.62	17.62	17.62	17.61	17.61	17.62	17.62	18.84	17.62	17.62	17.61
2/7/2007 5:00	48.96	48.96	48.96	48.96	48.96	48.96	48.96	48.96	48.96	48.96	48.96	48.96
2/7/2007 6:00	55.81	53.86	53.86	53.87	53.82	53.83	53.89	53.86	66.84	53.89	53.85	53.83
2/7/2007 7:00	56.81	55.50	55.51	55.50	55.57	55.58	55.50	55.50	64.48	55.50	55.43	55.51
2/7/2007 8:00	57.58	56.02	52.56	56.21	52.36	52.38	59.02	54.18	67.65	69.09	53.56	52.62
2/7/2007 9:00	64.04	63.85	60.50	63.10	60.40	60.39	65.16	61.61	69.42	72.68	61.17	60.54
2/7/2007 10:00	61.54	61.54	61.54	61.54	61.54	61.54	61.54	61.54	61.54	61.54	61.54	61.54
2/7/2007 11:00	53.40	53.40	53.40	53.40	53.40	53.40	53.40	53.40	53.40	53.40	53.40	53.40
2/7/2007 12:00	53.23	53.23	53.23	53.23	53.23	53.23	53.23	53.23	53.23	53.23	53.23	53.23
2/7/2007 13:00	44.59	44.59	44.59	44.59	44.59	44.59	44.59	44.59	44.59	44.59	44.59	44.59
2/7/2007 14:00	40.06	40.06	40.06	40.06	40.06	40.06	40.06	40.06	40.06	40.06	40.06	40.06
2/7/2007 15:00	31.07	31.07	31.07	31.07	31.07	31.07	31.07	31.07	31.07	31.07	31.07	31.07
2/7/2007 16:00	24.07	24.07	24.07	24.07	24.07	24.07	24.07	24.07	24.07	24.07	24.07	24.07
2/7/2007 17:00	31.81	31.81	31.81	31.81	31.81	31.81	31.81	31.81	31.81	31.81	31.81	31.81
2/7/2007 18:00	52.42	52.42	52.42	52.42	52.42	52.42	52.42	52.42	52.42	52.42	52.42	52.42
2/7/2007 19:00	64.59	64.59	64.59	64.59	64.59	64.59	64.59	64.59	64.59	64.59	64.59	64.59
2/7/2007 20:00	62.42	62.42	62.42	62.42	62.42	62.42	62.42	62.42	62.42	62.42	62.42	62.42
2/7/2007 21:00	56.92	56.92	56.92	56.92	56.92	56.92	56.92	56.92	56.92	56.92	56.92	56.92
2/7/2007 22:00	66.00	65.16	65.16	65.17	65.14	65.14	65.17	65.16	71.01	65.17	65.15	65.14
2/7/2007 23:00	57.67	55.44	55.40	55.44	55.37	55.37	55.45	55.43	70.56	55.44	55.41	55.39
2/8/2007 0:00	40.00	35.37	35.30	35.36	35.23	35.23	35.40	35.35	67.51	35.37	35.32	35.26

Table B:
Average Prices by Hour for
Load Settlement Locations and SPP-Wide

Hour Ending CPT	SPP	CSWS	EDE	GRDA	KACY	KCPL	OKGE	SECI	SPS	WFEC	WPEK	WR
2/8/2007 1:00	46.33	42.49	42.44	42.49	42.38	42.39	42.52	42.48	67.69	42.50	42.46	42.41
2/8/2007 2:00	55.77	54.29	54.27	54.29	54.25	54.25	54.30	54.28	63.87	54.29	54.27	54.26
2/8/2007 3:00	60.44	60.19	60.19	60.19	60.19	60.19	60.20	60.19	61.78	60.19	60.19	60.19
2/8/2007 4:00	50.54	48.74	48.72	48.74	48.69	48.69	48.75	48.73	60.35	48.74	48.72	48.70
2/8/2007 5:00	54.25	54.17	54.17	54.17	54.17	54.17	54.18	54.17	54.69	54.18	54.17	54.17
2/8/2007 6:00	58.95	58.14	58.13	58.15	58.12	58.12	58.15	58.14	63.56	58.15	58.13	58.13
2/8/2007 7:00	103.59	79.19	78.98	79.30	78.52	78.53	79.49	79.03	249.35	79.29	78.88	78.64
2/8/2007 8:00	65.80	65.33	65.33	65.33	65.32	65.32	65.34	65.33	68.61	65.34	65.33	65.32
2/8/2007 9:00	64.99	64.86	64.86	64.86	64.85	64.85	64.86	64.86	65.79	64.86	64.86	64.86
2/8/2007 10:00	64.17	63.74	63.74	63.74	63.73	63.73	63.75	63.74	66.73	63.74	63.73	63.73
2/8/2007 11:00	66.66	66.59	66.59	66.59	66.59	66.59	66.59	66.59	67.09	66.59	66.59	66.59
2/8/2007 12:00	66.24	66.10	66.10	66.11	66.10	66.10	66.11	66.10	67.03	66.10	66.10	66.10
2/8/2007 13:00	62.16	61.41	61.41	61.42	61.39	61.39	61.42	61.41	66.58	61.42	61.41	61.40
2/8/2007 14:00	62.41	61.87	61.86	61.87	61.85	61.85	61.87	61.86	65.69	61.87	61.86	61.85
2/8/2007 15:00	67.22	67.04	67.04	67.04	67.04	67.04	67.04	67.04	68.32	67.04	67.04	67.04
2/8/2007 16:00	76.18	77.68	66.39	75.25	66.13	66.13	82.59	70.40	77.07	109.69	68.73	66.61
2/8/2007 17:00	75.58	77.89	63.46	74.35	63.15	63.15	83.20	68.35	76.44	115.65	66.36	63.74
2/8/2007 18:00	84.12	85.93	71.22	83.32	70.79	70.80	93.14	76.45	85.02	127.22	74.31	71.44
2/8/2007 19:00	81.67	84.52	47.24	71.95	83.13	82.73	82.99	82.45	81.45	87.39	80.62	82.22
2/8/2007 20:00	68.83	68.83	68.83	68.83	68.83	68.83	68.83	68.83	68.83	68.83	68.83	68.83
2/8/2007 21:00	70.63	70.63	70.63	70.63	70.63	70.63	70.63	70.63	70.63	70.63	70.63	70.63
2/8/2007 22:00	66.76	66.19	66.18	66.19	66.17	66.17	66.19	66.18	70.20	66.19	66.18	66.17
2/8/2007 23:00	72.85	72.85	72.85	72.85	72.85	72.85	72.85	72.85	72.85	72.85	72.85	72.85
2/9/2007 0:00	66.28	66.28	66.28	66.28	66.28	66.28	66.28	66.28	66.28	66.28	66.28	66.28

Table B:
Average Prices by Hour for
Load Settlement Locations and SPP-Wide

Hour Ending CPT	SPP	CSWS	EDE	GRDA	KACY	KCPL	OKGE	SECI	SPS	WFEC	WPEK	WR
2/9/2007 1:00	63.60	63.49	63.49	63.49	63.49	63.49	63.49	63.49	64.20	63.49	63.49	63.49
2/9/2007 2:00	63.01	62.78	62.78	62.78	62.77	62.77	62.78	62.78	64.30	62.78	62.78	62.78
2/9/2007 3:00	58.62	58.62	58.62	58.62	58.62	58.62	58.62	58.62	58.62	58.62	58.62	58.62
2/9/2007 4:00	66.01	66.01	66.01	66.01	66.01	66.01	66.01	66.01	66.01	66.01	66.01	66.01
2/9/2007 5:00	70.29	70.29	70.29	70.29	70.29	70.29	70.29	70.29	70.29	70.29	70.29	70.29
2/9/2007 6:00	74.28	77.08	41.62	64.59	76.98	76.59	74.66	76.13	73.92	76.07	74.67	76.13
2/9/2007 7:00	86.51	99.16	92.35	68.30	83.11	83.15	79.98	81.69	80.38	81.46	81.80	82.69
2/9/2007 8:00	94.51	127.70	109.71	47.15	85.57	85.66	77.52	81.90	78.55	81.33	82.20	84.50
2/9/2007 9:00	87.15	113.08	99.23	50.43	80.28	80.35	73.99	77.40	74.79	76.97	77.63	79.43
2/9/2007 10:00	100.29	145.10	103.54	33.94	90.23	90.14	78.53	84.77	79.48	84.25	84.28	88.30
2/9/2007 11:00	96.77	139.91	103.09	33.96	86.76	86.71	75.73	81.63	76.69	81.35	81.36	85.01
2/9/2007 12:00	84.27	113.18	88.23	42.77	77.68	77.63	70.25	74.27	71.00	73.93	74.11	76.51
2/9/2007 13:00	82.85	115.57	88.28	36.18	75.16	75.13	67.01	71.36	67.72	71.27	71.21	73.88
2/9/2007 14:00	80.22	107.54	91.24	42.24	73.16	73.21	66.54	70.14	67.55	69.86	70.31	72.25
2/9/2007 15:00	69.35	74.21	69.38	61.22	67.65	67.64	66.36	67.03	69.60	67.14	66.99	67.44
2/9/2007 16:00	66.89	74.09	65.20	55.04	65.01	64.97	62.94	64.05	65.53	64.22	63.90	64.65
2/9/2007 17:00	82.23	115.86	93.21	33.61	73.89	73.91	65.15	69.95	66.30	69.75	69.99	72.63
2/9/2007 18:00	88.14	130.07	108.96	28.35	76.96	77.06	66.31	72.25	67.99	71.57	72.64	75.57
2/9/2007 19:00	82.55	110.34	96.22	42.73	75.00	75.06	68.22	71.97	69.19	71.59	72.19	74.10
2/9/2007 20:00	67.89	70.64	69.18	63.81	67.05	67.05	66.40	66.75	66.91	66.72	66.77	66.96
2/9/2007 21:00	61.58	60.74	60.73	60.74	60.71	60.71	60.75	60.73	66.65	60.74	60.72	60.72
2/9/2007 22:00	67.78	67.66	67.66	67.66	67.65	67.65	67.66	67.66	68.50	67.66	67.66	67.65
2/9/2007 23:00	60.21	60.21	60.21	60.21	60.21	60.21	60.21	60.21	60.21	60.21	60.21	60.21
2/10/2007 0:00	62.94	62.94	62.94	62.94	62.94	62.94	62.94	62.94	62.94	62.94	62.94	62.94

Table B:
Average Prices by Hour for
Load Settlement Locations and SPP-Wide

Hour Ending CPT	SPP	CSWS	EDE	GRDA	KACY	KCPL	OKGE	SECI	SPS	WFEC	WPEK	WR
2/10/2007 1:00	60.20	60.20	60.20	60.20	60.20	60.20	60.20	60.20	60.20	60.20	60.20	60.20
2/10/2007 2:00	57.40	57.40	57.40	57.40	57.40	57.40	57.40	57.40	57.40	57.40	57.40	57.40
2/10/2007 3:00	57.17	57.17	57.17	57.17	57.17	57.17	57.17	57.17	57.17	57.17	57.17	57.17
2/10/2007 4:00	60.52	60.52	60.52	60.52	60.52	60.52	60.52	60.52	60.52	60.52	60.52	60.52
2/10/2007 5:00	62.12	62.12	62.12	62.12	62.12	62.12	62.12	62.12	62.12	62.12	62.12	62.12
2/10/2007 6:00	64.90	64.90	64.90	64.90	64.90	64.90	64.90	64.90	64.90	64.90	64.90	64.90
2/10/2007 7:00	73.50	73.50	73.50	73.50	73.50	73.50	73.50	73.50	73.50	73.50	73.50	73.50
2/10/2007 8:00	67.58	67.58	67.58	67.58	67.58	67.58	67.58	67.58	67.58	67.58	67.58	67.58
2/10/2007 9:00	73.29	73.29	73.29	73.29	73.29	73.29	73.29	73.29	73.29	73.29	73.29	73.29
2/10/2007 10:00	72.70	72.70	72.70	72.70	72.70	72.70	72.70	72.70	72.70	72.70	72.70	72.70
2/10/2007 11:00	70.03	70.03	70.03	70.03	70.03	70.03	70.03	70.03	70.03	70.03	70.03	70.03
2/10/2007 12:00	67.16	67.16	67.16	67.16	67.16	67.16	67.16	67.16	67.16	67.16	67.16	67.16
2/10/2007 13:00	57.01	61.57	54.11	55.34	53.54	53.55	56.46	54.70	56.80	56.27	54.39	53.75
2/10/2007 14:00	61.21	61.21	61.21	61.21	61.21	61.21	61.21	61.21	61.21	61.21	61.21	61.21
2/10/2007 15:00	52.25	52.25	52.25	52.25	52.25	52.25	52.25	52.25	52.25	52.25	52.25	52.25
2/10/2007 16:00	57.87	57.87	57.87	57.87	57.87	57.87	57.87	57.87	57.87	57.87	57.87	57.87
2/10/2007 17:00	53.33	53.33	53.33	53.33	53.33	53.33	53.33	53.33	53.33	53.33	53.33	53.33
2/10/2007 18:00	65.81	65.81	65.81	65.81	65.81	65.81	65.81	65.81	65.81	65.81	65.81	65.81
2/10/2007 19:00	67.79	67.79	67.79	67.79	67.79	67.79	67.79	67.79	67.79	67.79	67.79	67.79
2/10/2007 20:00	72.63	72.63	72.63	72.63	72.63	72.63	72.63	72.63	72.63	72.63	72.63	72.63
2/10/2007 21:00	71.64	71.64	71.64	71.64	71.64	71.64	71.64	71.64	71.64	71.64	71.64	71.64
2/10/2007 22:00	70.86	70.86	70.86	70.86	70.86	70.86	70.86	70.86	70.86	70.86	70.86	70.86
2/10/2007 23:00	68.49	68.49	68.49	68.49	68.49	68.49	68.49	68.49	68.49	68.49	68.49	68.49
2/11/2007 0:00	52.02	52.02	52.02	52.02	52.02	52.02	52.02	52.02	52.02	52.02	52.02	52.02

Table B:
Average Prices by Hour for
Load Settlement Locations and SPP-Wide

Hour Ending CPT	SPP	CSWS	EDE	GRDA	KACY	KCPL	OKGE	SECI	SPS	WFEC	WPEK	WR
2/11/2007 1:00	55.16	55.16	55.16	55.16	55.16	55.16	55.16	55.16	55.16	55.16	55.16	55.16
2/11/2007 2:00	59.45	59.45	59.45	59.45	59.45	59.45	59.45	59.45	59.45	59.45	59.45	59.45
2/11/2007 3:00	57.77	57.77	57.77	57.77	57.77	57.77	57.77	57.77	57.77	57.77	57.77	57.77
2/11/2007 4:00	49.67	49.67	49.67	49.67	49.67	49.67	49.67	49.67	49.67	49.67	49.67	49.67
2/11/2007 5:00	52.42	52.42	52.42	52.42	52.42	52.42	52.42	52.42	52.42	52.42	52.42	52.42
2/11/2007 6:00	66.20	66.20	66.20	66.20	66.20	66.20	66.20	66.20	66.20	66.20	66.20	66.20
2/11/2007 7:00	60.84	60.84	60.84	60.84	60.84	60.84	60.84	60.84	60.84	60.84	60.84	60.84
2/11/2007 8:00	65.21	65.21	65.21	65.21	65.21	65.21	65.21	65.21	65.21	65.21	65.21	65.21
2/11/2007 9:00	66.33	66.33	66.33	66.33	66.33	66.33	66.33	66.33	66.33	66.33	66.33	66.33
2/11/2007 10:00	64.26	64.26	64.26	64.26	64.26	64.26	64.26	64.26	64.26	64.26	64.26	64.26
2/11/2007 11:00	55.87	55.87	55.87	55.87	55.87	55.87	55.87	55.87	55.87	55.87	55.87	55.87
2/11/2007 12:00	47.95	47.95	47.95	47.95	47.95	47.95	47.95	47.95	47.95	47.95	47.95	47.95
2/11/2007 13:00	46.51	46.51	46.51	46.51	46.51	46.51	46.51	46.51	46.51	46.51	46.51	46.51
2/11/2007 14:00	30.22	30.22	30.22	30.22	30.22	30.22	30.22	30.22	30.22	30.22	30.22	30.22
2/11/2007 15:00	16.77	16.77	16.77	16.77	16.77	16.77	16.77	16.77	16.77	16.77	16.77	16.77
2/11/2007 16:00	25.46	25.46	25.46	25.46	25.46	25.46	25.46	25.46	25.46	25.46	25.46	25.46
2/11/2007 17:00	40.80	40.80	40.80	40.80	40.80	40.80	40.80	40.80	40.80	40.80	40.80	40.80
2/11/2007 18:00	50.76	50.76	50.76	50.76	50.76	50.76	50.76	50.76	50.76	50.76	50.76	50.76
2/11/2007 19:00	65.14	65.14	65.14	65.14	65.14	65.14	65.14	65.14	65.14	65.14	65.14	65.14
2/11/2007 20:00	63.15	64.86	63.92	60.81	62.70	62.71	62.31	62.52	62.37	62.49	62.53	62.70
2/11/2007 21:00	57.18	57.18	57.18	57.18	57.18	57.18	57.18	57.18	57.18	57.18	57.18	57.18
2/11/2007 22:00	43.72	43.72	43.72	43.72	43.72	43.72	43.72	43.72	43.72	43.72	43.72	43.72
2/11/2007 23:00	26.55	26.55	26.55	26.55	26.55	26.55	26.55	26.55	26.55	26.55	26.55	26.55
2/12/2007 0:00	15.78	15.14	15.14	15.14	15.12	15.12	15.14	15.14	19.24	15.14	15.13	15.12

Table B:
Average Prices by Hour for
Load Settlement Locations and SPP-Wide

Hour Ending CPT	SPP	CSWS	EDE	GRDA	KACY	KCPL	OKGE	SECI	SPS	WFEC	WPEK	WR
2/12/2007 1:00	19.25	19.25	19.25	19.25	19.25	19.25	19.25	19.25	19.25	19.25	19.25	19.25
2/12/2007 2:00	13.10	13.10	13.10	13.10	13.10	13.10	13.10	13.10	13.10	13.10	13.10	13.10
2/12/2007 3:00	13.85	13.85	13.85	13.85	13.85	13.85	13.85	13.85	13.85	13.85	13.85	13.85
2/12/2007 4:00	14.51	14.51	14.51	14.51	14.51	14.51	14.51	14.51	14.51	14.51	14.51	14.51
2/12/2007 5:00	17.33	17.33	17.33	17.33	17.33	17.33	17.33	17.33	17.33	17.33	17.33	17.33
2/12/2007 6:00	33.24	33.24	33.24	33.24	33.24	33.24	33.24	33.24	33.24	33.24	33.24	33.24
2/12/2007 7:00	57.25	57.25	57.25	57.25	57.25	57.25	57.25	57.25	57.25	57.25	57.25	57.25
2/12/2007 8:00	60.52	60.30	60.30	60.31	60.30	60.30	60.31	60.30	61.80	60.30	60.30	60.30
2/12/2007 9:00	52.70	52.05	52.05	52.05	52.04	52.04	52.06	52.05	56.50	52.05	52.04	52.04
2/12/2007 10:00	62.09	62.09	62.09	62.09	62.09	62.09	62.09	62.09	62.09	62.09	62.09	62.09
2/12/2007 11:00	54.97	54.97	54.97	54.97	54.97	54.97	54.97	54.97	54.97	54.97	54.97	54.97
2/12/2007 12:00	47.18	47.18	47.18	47.18	47.18	47.18	47.18	47.18	47.18	47.18	47.18	47.18
2/12/2007 13:00	54.12	54.12	54.12	54.12	54.12	54.12	54.12	54.12	54.12	54.12	54.12	54.12
2/12/2007 14:00	45.65	45.65	45.65	45.65	45.65	45.65	45.65	45.65	45.65	45.65	45.65	45.65
2/12/2007 15:00	54.61	54.61	54.61	54.61	54.61	54.61	54.61	54.61	54.61	54.61	54.61	54.61
2/12/2007 16:00	64.98	64.98	64.98	64.98	64.98	64.98	64.98	64.98	64.98	64.98	64.98	64.98
2/12/2007 17:00	64.14	64.14	64.14	64.14	64.14	64.14	64.14	64.14	64.14	64.14	64.14	64.14
2/12/2007 18:00	69.00	77.93	72.24	57.46	66.58	66.60	65.04	65.79	65.12	65.84	65.78	66.34
2/12/2007 19:00	63.46	66.73	64.68	59.22	62.58	62.59	62.02	62.29	62.05	62.31	62.29	62.49
2/12/2007 20:00	58.20	57.37	57.36	57.37	57.35	57.35	57.38	57.37	63.15	57.37	57.36	57.35
2/12/2007 21:00	59.82	58.10	58.09	58.11	58.06	58.06	58.12	58.09	69.83	58.11	58.08	58.06
2/12/2007 22:00	36.54	30.86	30.81	30.88	30.71	30.71	30.92	30.82	68.54	30.88	30.78	30.73
2/12/2007 23:00	46.20	42.62	42.60	42.62	42.52	42.52	42.64	42.60	65.57	42.62	42.57	42.54
2/13/2007 0:00	22.60	16.91	16.89	16.91	16.76	16.77	16.95	16.88	52.34	16.92	16.84	16.79

Table B:
Average Prices by Hour for
Load Settlement Locations and SPP-Wide

Hour Ending CPT	SPP	CSWS	EDE	GRDA	KACY	KCPL	OKGE	SECI	SPS	WFEC	WPEK	WR
2/13/2007 1:00	14.65	14.19	14.18	14.19	14.17	14.17	14.19	14.18	17.04	14.19	14.18	14.18
2/13/2007 2:00	15.51	14.26	14.26	14.26	14.23	14.23	14.27	14.26	21.87	14.26	14.24	14.23
2/13/2007 3:00	15.08	14.30	14.30	14.30	14.28	14.28	14.31	14.30	19.06	14.30	14.29	14.28
2/13/2007 4:00	16.08	14.47	14.46	14.47	14.43	14.43	14.48	14.46	24.32	14.47	14.45	14.44
2/13/2007 5:00	17.18	16.15	16.14	16.15	16.12	16.12	16.16	16.14	22.51	16.15	16.13	16.13
2/13/2007 6:00	30.95	29.99	29.98	30.00	29.97	29.97	30.00	29.99	36.09	30.00	29.98	29.97
2/13/2007 7:00	44.99	41.32	41.30	41.34	41.23	41.23	41.36	41.30	65.60	41.34	41.27	41.25
2/13/2007 8:00	66.56	87.57	73.35	34.97	58.72	58.77	54.44	56.66	67.46	56.76	56.63	58.08
2/13/2007 9:00	78.73	117.27	93.73	28.79	68.81	68.90	61.49	65.27	62.36	65.40	65.24	67.72
2/13/2007 10:00	65.21	70.10	66.47	56.34	62.56	62.57	61.45	62.02	68.97	62.07	62.01	62.39
2/13/2007 11:00	70.22	71.35	71.11	60.67	81.96	82.78	63.45	65.44	69.23	65.01	59.66	72.09
2/13/2007 12:00	75.65	97.95	84.20	45.28	69.13	69.18	64.82	67.05	68.44	67.22	67.03	68.50
2/13/2007 13:00	114.32	200.86	158.29	17.72	93.71	97.08	68.50	81.30	70.87	79.14	82.79	91.39
2/13/2007 14:00	103.64	175.69	141.60	26.54	86.30	89.96	64.23	75.75	66.33	73.25	77.42	84.88
2/13/2007 15:00	108.10	187.81	149.71	20.10	88.38	92.08	64.76	77.17	67.02	74.77	78.85	86.74
2/13/2007 16:00	85.64	139.18	111.91	21.29	72.74	73.36	56.15	63.93	62.95	62.26	64.71	69.62
2/13/2007 17:00	112.86	152.17	121.26	12.21	74.03	73.97	51.12	61.14	244.42	58.54	62.33	68.40
2/13/2007 18:00	109.38	187.00	151.16	20.76	95.30	95.21	65.15	78.16	67.53	74.35	79.81	87.87
2/13/2007 19:00	131.30	175.02	160.19	48.11	189.90	193.69	78.32	101.11	85.09	90.84	62.93	134.40
2/13/2007 20:00	117.13	201.12	163.06	16.83	101.12	101.06	69.62	83.01	71.85	79.76	85.21	93.68
2/13/2007 21:00	118.56	205.04	163.62	16.23	100.80	100.74	70.64	83.28	73.02	80.65	85.32	93.50
2/13/2007 22:00	103.36	190.48	132.36	8.40	76.96	76.99	61.82	67.04	64.83	69.50	67.29	72.05
2/13/2007 23:00	81.45	109.15	88.16	53.02	71.37	71.38	67.26	68.39	74.98	69.56	68.35	69.60
2/14/2007 0:00	50.38	47.99	47.96	47.98	47.92	47.93	47.98	47.98	64.34	47.98	47.95	47.94

Table B:
Average Prices by Hour for
Load Settlement Locations and SPP-Wide

Hour Ending CPT	SPP	CSWS	EDE	GRDA	KACY	KCPL	OKGE	SECI	SPS	WFEC	WPEK	WR
2/14/2007 1:00	55.47	54.01	53.99	54.00	53.97	53.97	54.00	54.00	63.95	54.01	53.99	53.98
2/14/2007 2:00	61.37	62.70	59.56	60.08	59.34	59.34	60.56	59.88	64.55	60.46	59.70	59.43
2/14/2007 3:00	63.21	85.60	48.15	54.31	45.59	45.64	60.01	51.91	63.79	58.91	49.85	46.62
2/14/2007 4:00	63.88	77.42	54.48	58.25	52.92	52.95	61.76	56.79	65.17	61.08	55.53	53.55
2/14/2007 5:00	70.17	92.51	59.43	57.91	54.62	54.68	66.01	59.54	67.92	65.42	57.87	55.38
2/14/2007 6:00	120.10	173.90	147.00	51.57	106.97	107.04	91.63	98.21	92.98	97.67	99.00	103.57
2/14/2007 7:00	158.93	202.05	188.73	80.18	207.63	211.09	110.48	130.19	116.00	121.63	99.47	159.80
2/14/2007 8:00	125.95	208.05	168.26	24.88	123.88	124.77	73.89	88.15	77.78	84.87	80.93	104.33
2/14/2007 9:00	117.08	211.68	155.30	13.04	91.61	91.59	68.41	76.85	71.82	77.89	77.65	84.79
2/14/2007 10:00	122.23	204.17	169.64	17.00	118.65	118.79	70.41	85.79	73.44	81.85	80.97	102.27
2/14/2007 11:00	117.08	201.26	163.83	14.06	100.57	100.30	68.90	82.64	71.63	79.49	83.05	93.20
2/14/2007 12:00	102.68	167.44	140.11	27.34	91.62	90.86	63.38	75.18	69.88	71.92	75.89	84.56
2/14/2007 13:00	80.95	120.84	105.77	36.41	74.75	74.42	51.78	60.78	68.93	57.67	62.84	68.67
2/14/2007 14:00	77.92	115.09	100.91	36.93	72.36	72.20	51.09	59.49	66.18	56.49	61.39	66.75
2/14/2007 15:00	81.78	122.41	106.31	37.85	75.86	75.70	52.89	61.98	68.23	58.76	64.04	69.81
2/14/2007 16:00	79.49	120.15	103.47	34.65	72.97	72.82	50.02	59.00	68.45	55.79	61.08	66.90
2/14/2007 17:00	87.66	141.42	118.01	26.70	78.49	78.35	51.72	62.38	68.11	58.99	64.58	71.62
2/14/2007 18:00	112.73	192.70	155.30	19.79	98.46	98.31	66.78	81.25	69.70	76.56	82.20	90.83
2/14/2007 19:00	124.42	182.25	163.64	35.86	168.84	171.99	65.67	96.57	76.12	78.99	60.04	121.57
2/14/2007 20:00	107.42	178.16	153.15	14.21	92.50	92.44	65.83	78.28	73.72	75.38	78.57	86.16
2/14/2007 21:00	105.38	172.89	151.65	14.57	91.17	91.15	66.32	77.82	72.17	75.51	78.01	85.22
2/14/2007 22:00	100.35	173.19	142.48	10.34	84.93	84.79	55.66	69.00	70.87	65.21	69.60	77.57
2/14/2007 23:00	92.09	145.33	124.11	30.06	81.30	81.26	59.96	71.37	66.34	67.49	72.43	77.45
2/15/2007 0:00	69.67	79.81	76.18	58.72	67.03	67.03	62.58	65.36	66.74	64.30	65.85	66.60

Table B:
Average Prices by Hour for
Load Settlement Locations and SPP-Wide

Hour Ending CPT	SPP	CSWS	EDE	GRDA	KACY	KCPL	OKGE	SECI	SPS	WFEC	WPEK	WR
2/15/2007 1:00	118.72	73.87	71.99	64.52	66.99	67.04	66.58	67.41	398.49	67.29	66.85	67.21
2/15/2007 2:00	86.54	124.35	35.48	33.90	86.41	85.52	68.44	79.79	68.60	75.93	76.91	82.67
2/15/2007 3:00	86.48	118.77	94.38	51.85	81.48	81.30	67.51	76.19	68.95	72.96	76.90	79.72
2/15/2007 4:00	84.59	116.78	93.41	49.96	79.56	79.39	65.49	74.24	66.99	71.01	75.01	77.82
2/15/2007 5:00	109.04	177.87	131.97	23.80	98.37	98.03	69.94	84.57	72.51	79.99	84.40	92.20
2/15/2007 6:00	122.57	191.69	150.65	26.44	133.11	134.17	73.88	94.95	78.83	85.43	79.88	109.87
2/15/2007 7:00	131.82	161.03	136.80	58.69	193.97	198.18	87.33	116.29	97.60	98.97	66.89	140.25
2/15/2007 8:00	175.49	211.96	183.77	43.79	341.57	352.36	82.64	149.68	106.58	106.87	25.13	208.48
2/15/2007 9:00	112.18	181.90	142.66	30.73	102.66	102.47	69.78	84.78	73.61	79.34	85.11	94.37
2/15/2007 10:00	140.18	184.65	173.90	42.88	227.57	234.19	72.24	114.60	87.18	88.24	46.17	151.45
2/15/2007 11:00	114.83	180.12	148.80	38.13	102.68	102.76	76.28	89.11	78.86	84.56	89.75	97.23
2/15/2007 12:00	86.24	123.60	97.49	38.29	78.38	78.34	62.28	70.20	74.17	67.57	70.17	74.94
2/15/2007 13:00	64.57	70.80	63.21	50.89	60.57	60.58	58.84	59.87	72.44	59.82	59.55	60.32
2/15/2007 14:00	58.43	60.52	24.82	44.84	57.99	57.64	55.79	57.33	71.74	57.27	55.36	57.01
2/15/2007 15:00	63.60	62.61	60.37	61.87	62.55	62.53	62.48	62.54	70.86	62.55	62.41	62.50
2/15/2007 16:00	63.92	70.88	64.36	49.94	59.78	59.80	58.15	59.09	70.24	59.11	58.82	59.51
2/15/2007 17:00	115.68	179.20	115.65	31.97	104.35	104.08	81.77	93.07	82.88	90.03	91.26	98.77
2/15/2007 18:00	151.00	190.90	161.45	43.59	259.67	266.95	79.58	125.51	95.35	97.02	39.37	166.35
2/15/2007 19:00	192.36	199.33	181.97	110.26	338.97	347.48	126.84	175.26	144.07	143.95	68.50	224.70
2/15/2007 20:00	153.68	185.16	149.93	48.08	272.32	279.33	84.86	131.93	101.11	102.54	39.26	173.65
2/15/2007 21:00	156.83	186.61	157.68	51.85	275.81	283.08	89.27	135.51	105.55	106.38	41.84	176.97
2/15/2007 22:00	132.64	193.80	140.15	41.56	145.46	146.41	89.05	108.36	93.10	99.76	90.82	121.96
2/15/2007 23:00	202.06	231.77	219.69	168.82	197.82	197.76	183.41	189.77	184.53	187.29	190.51	194.10
2/16/2007 0:00	72.11	89.14	82.90	54.36	70.26	70.21	60.91	64.94	61.64	63.22	65.62	67.77

Table B:
Average Prices by Hour for
Load Settlement Locations and SPP-Wide

Hour Ending CPT	SPP	CSWS	EDE	GRDA	KACY	KCPL	OKGE	SECI	SPS	WFEC	WPEK	WR
2/16/2007 1:00	87.82	112.79	95.98	60.06	85.82	85.67	71.79	78.04	72.70	75.39	78.72	82.17
2/16/2007 2:00	73.18	81.99	73.40	62.69	72.75	72.67	67.64	69.98	67.90	69.01	70.09	71.43
2/16/2007 3:00	78.15	94.68	81.94	58.72	77.17	77.05	67.38	71.79	67.97	69.91	72.24	74.73
2/16/2007 4:00	89.07	120.30	99.58	52.76	86.95	86.78	68.53	76.66	69.60	73.30	77.61	82.23
2/16/2007 5:00	118.12	175.70	135.07	43.92	110.52	110.26	82.76	95.54	84.29	91.14	96.53	103.90
2/16/2007 6:00	118.87	192.96	148.22	19.64	106.00	105.81	73.36	88.53	75.24	83.61	89.89	98.57
2/16/2007 7:00	151.87	181.05	183.43	49.93	287.40	296.05	74.86	124.30	92.36	94.01	23.63	172.70
2/16/2007 8:00	161.18	181.47	202.71	21.28	306.73	314.13	78.37	149.81	103.89	101.72	57.31	201.14
2/16/2007 9:00	118.55	167.82	172.73	3.38	127.36	127.51	69.39	105.36	81.95	83.35	112.44	122.64
2/16/2007 10:00	134.77	199.14	193.68	(2.93)	142.04	142.19	75.96	115.33	90.22	93.01	125.03	135.93
2/16/2007 11:00	95.03	127.96	126.56	38.07	96.15	96.27	65.74	84.79	72.29	73.55	89.73	94.95
2/16/2007 12:00	60.46	59.77	59.76	59.77	59.74	59.74	59.78	59.76	64.93	59.77	59.75	59.75
2/16/2007 13:00	51.85	49.76	49.73	49.76	49.70	49.70	49.79	49.74	65.35	49.76	49.73	49.72
2/16/2007 14:00	47.51	45.00	44.96	44.99	44.92	44.92	45.03	44.97	63.77	44.99	44.95	44.93
2/16/2007 15:00	46.89	44.16	44.12	44.16	44.07	44.08	44.20	44.14	64.62	44.16	44.11	44.09
2/16/2007 16:00	22.94	22.40	22.39	22.40	22.38	22.38	22.41	22.39	26.44	22.40	22.39	22.39
2/16/2007 17:00	51.94	48.19	51.81	44.73	72.95	74.35	44.38	50.93	47.01	46.21	36.66	57.42
2/16/2007 18:00	83.35	67.40	82.93	52.16	173.97	180.08	50.79	79.01	61.98	58.62	17.84	106.93
2/16/2007 19:00	125.10	98.13	126.05	69.83	293.39	303.99	66.90	91.95	74.69	81.35	(18.17)	176.44
2/16/2007 20:00	90.59	76.32	91.77	60.48	185.54	191.40	58.55	66.97	60.43	66.65	16.73	120.96
2/16/2007 21:00	45.75	44.90	44.89	44.91	44.87	44.88	44.91	44.89	51.23	44.90	44.89	44.88
2/16/2007 22:00	94.32	106.07	105.19	62.89	96.22	96.22	82.86	90.50	89.09	86.33	91.01	93.57
2/16/2007 23:00	48.17	48.17	48.17	48.17	48.17	48.17	48.17	48.17	48.17	48.17	48.17	48.17
2/17/2007 0:00	42.86	42.86	42.86	42.86	42.86	42.86	42.86	42.86	42.86	42.86	42.86	42.86

Table B:
Average Prices by Hour for
Load Settlement Locations and SPP-Wide

Hour Ending CPT	SPP	CSWS	EDE	GRDA	KACY	KCPL	OKGE	SECI	SPS	WFEC	WPEK	WR
2/17/2007 1:00	58.58	58.58	58.58	58.58	58.58	58.58	58.58	58.58	58.58	58.58	58.58	58.58
2/17/2007 2:00	65.50	67.92	68.20	68.14	69.45	68.97	68.12	40.71	54.10	67.48	6.28	72.72
2/17/2007 3:00	64.06	85.04	68.56	64.79	72.04	70.97	59.51	3.30	28.54	56.60	(70.69)	78.20
2/17/2007 4:00	52.26	53.84	52.77	53.55	54.83	54.51	53.88	36.91	45.19	53.55	16.26	56.81
2/17/2007 5:00	60.79	61.02	57.67	59.86	61.10	61.06	60.80	60.97	60.75	60.95	60.84	61.00
2/17/2007 6:00	48.38	48.38	48.36	48.37	48.38	48.38	48.38	48.38	48.38	48.38	48.38	48.38
2/17/2007 7:00	55.78	54.67	54.63	52.68	64.27	64.79	52.94	55.05	53.66	53.71	50.82	58.24
2/17/2007 8:00	63.76	62.80	63.09	61.21	71.05	71.47	61.34	63.13	61.96	61.98	59.50	65.86
2/17/2007 9:00	143.16	145.86	168.21	36.15	297.77	306.50	70.68	121.64	89.69	90.18	48.21	185.07
2/17/2007 10:00	76.59	92.90	93.29	36.77	85.51	85.90	59.18	70.89	63.65	64.27	68.59	77.86
2/17/2007 11:00	70.64	78.60	80.19	45.17	85.83	86.67	57.38	66.32	60.72	61.06	60.01	74.20
2/17/2007 12:00	48.49	49.32	49.22	46.56	48.66	48.66	47.78	48.26	47.98	48.01	48.29	48.47
2/17/2007 13:00	40.22	40.22	40.22	40.22	40.22	40.22	40.22	40.22	40.22	40.22	40.22	40.22
2/17/2007 14:00	26.06	26.06	26.06	26.06	26.06	26.06	26.06	26.06	26.06	26.06	26.06	26.06
2/17/2007 15:00	25.34	19.48	19.17	19.37	15.73	15.87	21.21	(12.91)	68.45	20.23	2.03	15.10
2/17/2007 16:00	17.63	16.18	16.12	16.16	15.41	15.43	16.54	9.51	27.91	16.34	12.59	15.28
2/17/2007 17:00	19.06	18.60	18.60	18.61	18.55	18.56	18.63	18.26	21.76	18.61	18.42	18.55
2/17/2007 18:00	48.43	48.22	48.21	48.21	48.08	48.08	48.28	47.02	50.04	48.24	47.58	48.06
2/17/2007 19:00	90.05	123.83	119.65	21.49	93.87	93.92	61.13	79.94	68.46	69.60	81.59	88.55
2/17/2007 20:00	100.58	115.37	122.07	46.96	153.53	156.86	63.19	88.02	72.33	72.83	63.81	114.14
2/17/2007 21:00	62.87	63.36	63.70	59.99	65.52	65.67	61.25	62.37	61.69	61.72	61.20	63.55
2/17/2007 22:00	74.42	85.31	81.71	63.30	73.47	73.47	67.28	69.91	67.86	68.75	70.02	71.69
2/17/2007 23:00	63.49	63.49	63.49	63.49	63.49	63.49	63.49	63.49	63.49	63.49	63.49	63.49
2/18/2007 0:00	56.41	56.41	56.41	56.41	56.41	56.41	56.41	56.41	56.41	56.41	56.41	56.41

Table B:
Average Prices by Hour for
Load Settlement Locations and SPP-Wide

Hour Ending CPT	SPP	CSWS	EDE	GRDA	KACY	KCPL	OKGE	SECI	SPS	WFEC	WPEK	WR
2/18/2007 1:00	49.09	49.09	49.09	49.09	49.09	49.09	49.09	49.09	49.09	49.09	49.09	49.09
2/18/2007 2:00	58.52	58.52	58.52	58.52	58.52	58.52	58.52	58.52	58.52	58.52	58.52	58.52
2/18/2007 3:00	46.18	46.18	46.18	46.18	46.18	46.18	46.18	46.18	46.18	46.18	46.18	46.18
2/18/2007 4:00	51.27	59.49	60.46	60.29	60.55	63.11	60.17	(34.07)	12.60	58.07	(138.58)	75.71
2/18/2007 5:00	54.18	56.86	57.17	57.12	57.20	58.04	57.08	26.12	41.46	56.38	(8.25)	62.18
2/18/2007 6:00	47.00	55.80	56.85	56.67	56.95	59.75	56.55	(46.46)	4.61	54.25	(160.03)	73.50
2/18/2007 7:00	57.71	62.66	63.26	63.16	63.31	64.92	63.08	4.53	33.46	61.78	(59.83)	72.74
2/18/2007 8:00	46.71	49.23	49.53	49.48	49.57	50.39	49.45	19.33	34.27	48.78	(12.91)	54.38
2/18/2007 9:00	47.22	47.49	47.52	47.52	47.52	47.61	47.51	44.28	45.89	47.44	40.90	48.04
2/18/2007 10:00	41.53	41.53	41.53	41.53	41.53	41.53	41.53	41.53	41.53	41.53	41.53	41.53
2/18/2007 11:00	18.12	18.09	18.09	18.09	18.07	18.07	18.09	17.93	18.33	18.09	18.01	18.07
2/18/2007 12:00	23.56	23.56	23.56	23.56	23.56	23.56	23.56	23.56	23.56	23.56	23.56	23.56
2/18/2007 13:00	17.55	17.55	17.55	17.55	17.55	17.55	17.55	17.55	17.55	17.55	17.55	17.55
2/18/2007 14:00	14.99	14.99	14.99	14.99	14.99	14.99	14.99	14.99	14.99	14.99	14.99	14.99
2/18/2007 15:00	13.72	13.72	13.72	13.72	13.72	13.72	13.72	13.72	13.72	13.72	13.72	13.72
2/18/2007 16:00	13.91	13.91	13.91	13.91	13.91	13.91	13.91	13.91	13.91	13.91	13.91	13.91
2/18/2007 17:00	14.04	14.04	14.04	14.04	14.04	14.04	14.04	14.04	14.04	14.04	14.04	14.04
2/18/2007 18:00	12.15	14.67	14.98	14.92	15.00	15.77	14.89	(12.91)	0.92	14.26	(43.36)	19.50
2/18/2007 19:00	41.35	49.09	50.05	49.88	50.13	52.64	49.79	(39.69)	4.64	47.76	(135.95)	64.65
2/18/2007 20:00	60.86	67.05	67.82	67.69	67.89	69.89	67.61	(3.62)	31.55	66.00	(79.16)	79.47
2/18/2007 21:00	41.84	44.67	45.02	44.96	45.04	45.95	44.93	12.36	28.56	44.19	(21.51)	50.32
2/18/2007 22:00	59.83	65.76	66.49	66.36	66.50	68.41	66.31	(2.48)	32.53	64.75	(73.67)	77.57
2/18/2007 23:00	61.79	66.44	67.06	66.96	66.66	68.36	67.13	1.39	42.80	65.64	(61.76)	76.47
2/19/2007 0:00	33.04	34.68	35.03	34.98	34.09	35.15	35.44	(12.47)	29.97	34.34	(49.89)	40.10

Table B:
Average Prices by Hour for
Load Settlement Locations and SPP-Wide

Hour Ending CPT	SPP	CSWS	EDE	GRDA	KACY	KCPL	OKGE	SECI	SPS	WFEC	WPEK	WR
2/19/2007 1:00	26.98	27.66	27.81	27.79	27.41	27.84	27.98	8.09	25.80	27.52	(7.94)	29.89
2/19/2007 2:00	36.25	41.28	41.85	41.75	41.89	43.31	41.69	(12.26)	14.70	40.51	(73.41)	50.62
2/19/2007 3:00	32.56	35.39	35.71	35.66	35.74	36.53	35.62	5.20	20.40	34.95	(29.43)	40.62
2/19/2007 4:00	25.97	30.69	31.22	31.13	31.26	32.58	31.07	(19.23)	5.88	29.97	(78.62)	39.34
2/19/2007 5:00	52.85	58.56	59.20	59.09	59.25	60.86	59.02	(2.09)	28.49	57.68	(75.99)	69.05
2/19/2007 6:00	39.41	40.64	40.78	40.75	40.79	41.15	40.74	27.23	34.02	40.44	10.39	42.94
2/19/2007 7:00	70.39	71.14	71.22	71.20	71.23	71.45	71.20	62.81	66.99	71.01	52.30	72.57
2/19/2007 8:00	62.08	62.07	62.07	62.07	62.06	62.06	62.07	62.01	62.16	62.07	62.03	62.06
2/19/2007 9:00	65.28	65.09	65.31	64.83	66.81	66.89	64.76	65.28	64.98	64.91	64.23	65.63
2/19/2007 10:00	61.00	61.00	61.00	61.00	61.00	61.00	61.00	61.00	61.00	61.00	61.00	61.00
2/19/2007 11:00	59.32	59.32	59.32	59.32	59.32	59.32	59.32	59.32	59.32	59.32	59.32	59.32
2/19/2007 12:00	55.73	54.75	55.83	53.86	62.13	62.53	53.56	55.79	54.48	54.19	51.29	57.19
2/19/2007 13:00	26.12	26.12	26.12	26.12	26.12	26.12	26.12	26.12	26.12	26.12	26.12	26.12
2/19/2007 14:00	31.40	31.40	31.40	31.40	31.40	31.40	31.40	31.40	31.40	31.40	31.40	31.40
2/19/2007 15:00	18.26	18.07	18.07	18.07	18.07	18.07	18.08	18.07	19.27	18.07	18.07	18.07
2/19/2007 16:00	21.22	20.42	20.40	20.41	20.20	20.20	20.52	18.59	26.09	20.46	19.44	20.16
2/19/2007 17:00	22.52	22.22	22.21	22.21	22.08	22.08	22.28	21.05	24.51	22.24	21.59	22.06
2/19/2007 18:00	25.54	25.27	25.26	25.27	25.18	25.18	25.31	24.50	27.24	25.28	24.85	25.16
2/19/2007 19:00	53.83	53.83	53.83	53.83	53.83	53.83	53.83	53.83	53.83	53.83	53.83	53.83
2/19/2007 20:00	58.49	58.49	58.49	58.49	58.49	58.49	58.49	58.49	58.49	58.49	58.49	58.49
2/19/2007 21:00	39.18	38.36	38.31	38.33	37.84	37.86	38.57	33.96	45.13	38.43	36.02	37.74
2/19/2007 22:00	38.06	37.97	37.97	37.97	37.92	37.92	38.00	37.51	38.69	37.98	37.73	37.91
2/19/2007 23:00	44.95	44.57	44.45	44.57	44.28	44.29	44.65	42.42	47.74	44.58	43.38	44.23
2/20/2007 0:00	20.75	20.69	20.67	20.69	20.64	20.64	20.70	20.34	21.20	20.69	20.50	20.63

Table B:
Average Prices by Hour for
Load Settlement Locations and SPP-Wide

Hour Ending CPT	SPP	CSWS	EDE	GRDA	KACY	KCPL	OKGE	SECI	SPS	WFEC	WPEK	WR
2/20/2007 1:00	15.67	14.47	14.45	14.46	14.44	14.43	14.47	14.46	21.73	14.47	14.46	14.44
2/20/2007 2:00	15.92	14.73	14.71	14.73	14.71	14.69	14.74	14.62	21.86	14.74	14.66	14.69
2/20/2007 3:00	15.31	14.66	14.65	14.65	14.65	14.64	14.66	14.65	18.56	14.66	14.65	14.64
2/20/2007 4:00	15.28	14.64	14.63	14.64	14.64	14.63	14.65	14.64	18.41	14.65	14.64	14.63
2/20/2007 5:00	15.50	14.87	14.86	14.86	14.86	14.85	14.87	14.87	18.66	14.87	14.86	14.85
2/20/2007 6:00	22.24	21.73	21.73	21.74	21.72	21.72	21.74	21.73	24.86	21.74	21.73	21.73
2/20/2007 7:00	48.88	47.49	47.49	47.51	47.47	47.47	47.52	47.50	56.40	47.51	47.49	47.48
2/20/2007 8:00	82.32	82.17	82.17	82.17	82.17	82.17	82.17	82.17	83.12	82.17	82.17	82.17
2/20/2007 9:00	41.93	38.40	38.39	38.44	38.33	38.33	38.46	38.40	61.07	38.43	38.37	38.34
2/20/2007 10:00	32.44	27.52	27.51	27.58	27.43	27.43	27.61	27.52	58.96	27.57	27.49	27.45
2/20/2007 11:00	27.69	23.03	23.02	23.08	22.94	22.94	23.10	23.03	52.92	23.07	23.00	22.96
2/20/2007 12:00	38.21	34.42	34.42	34.46	34.34	34.35	34.48	34.42	58.76	34.46	34.39	34.36
2/20/2007 13:00	31.40	26.74	26.74	26.79	26.64	26.65	26.81	26.74	56.80	26.78	26.71	26.67
2/20/2007 14:00	28.28	22.97	22.97	23.03	22.87	22.87	23.06	22.98	57.21	23.03	22.94	22.90
2/20/2007 15:00	26.48	21.10	21.10	21.15	20.99	21.00	21.19	21.10	55.68	21.15	21.06	21.02
2/20/2007 16:00	34.24	30.54	30.54	30.58	30.47	30.47	30.60	30.55	54.32	30.58	30.52	30.49
2/20/2007 17:00	33.60	29.92	29.92	29.97	29.85	29.85	29.99	29.93	53.42	29.96	29.90	29.87
2/20/2007 18:00	30.37	26.52	26.52	26.57	26.44	26.45	26.59	26.52	51.50	26.56	26.49	26.46
2/20/2007 19:00	57.28	57.09	57.09	57.10	57.09	57.09	57.10	57.09	58.34	57.10	57.09	57.09
2/20/2007 20:00	57.25	56.14	56.14	56.15	56.11	56.11	56.16	56.14	63.45	56.15	56.13	56.12
2/20/2007 21:00	52.15	50.13	50.13	50.15	50.09	50.09	50.16	50.13	63.29	50.15	50.11	50.10
2/20/2007 22:00	42.07	38.25	38.24	38.30	38.17	38.17	38.31	38.25	62.66	38.28	38.22	38.19
2/20/2007 23:00	46.55	44.60	44.57	44.59	44.54	44.54	44.61	44.59	56.81	44.60	44.58	44.56
2/21/2007 0:00	18.27	14.74	14.68	14.71	14.63	14.63	14.75	14.72	36.17	14.73	14.69	14.66

Table B:
Average Prices by Hour for
Load Settlement Locations and SPP-Wide

Hour Ending CPT	SPP	CSWS	EDE	GRDA	KACY	KCPL	OKGE	SECI	SPS	WFEC	WPEK	WR
2/21/2007 1:00	23.48	23.41	23.41	23.41	23.40	23.40	23.41	23.41	23.85	23.41	23.41	23.40
2/21/2007 2:00	23.32	23.29	23.28	23.29	23.28	23.28	23.29	23.27	23.50	23.28	23.28	23.28
2/21/2007 3:00	21.26	20.87	20.87	20.87	20.86	20.86	20.87	20.87	23.17	20.87	20.87	20.86
2/21/2007 4:00	20.17	19.53	19.52	19.53	19.51	19.51	19.53	19.53	23.35	19.53	19.52	19.52
2/21/2007 5:00	21.31	20.36	20.36	20.37	20.35	20.35	20.38	20.36	26.01	20.37	20.36	20.35
2/21/2007 6:00	50.86	50.86	50.86	50.86	50.86	50.86	50.86	50.86	50.86	50.86	50.86	50.86
2/21/2007 7:00	72.29	72.29	72.29	72.29	72.29	72.29	72.29	72.29	72.29	72.29	72.29	72.29
2/21/2007 8:00	56.22	54.67	54.67	54.69	54.64	54.64	54.70	54.67	64.76	54.68	54.66	54.65
2/21/2007 9:00	50.68	48.01	48.00	48.03	47.95	47.95	48.05	48.00	65.41	48.03	47.98	47.96
2/21/2007 10:00	47.43	44.32	44.30	44.35	44.24	44.25	44.37	44.31	64.66	44.34	44.29	44.26
2/21/2007 11:00	57.49	55.70	55.69	55.72	55.66	55.66	55.73	55.70	67.42	55.71	55.68	55.67
2/21/2007 12:00	27.92	21.45	21.43	21.53	21.31	21.31	21.56	21.44	63.80	21.50	21.39	21.34
2/21/2007 13:00	31.48	25.99	25.97	26.05	25.87	25.88	26.09	25.98	62.06	26.03	25.94	25.90
2/21/2007 14:00	42.32	39.01	38.99	39.05	38.94	38.94	39.06	39.00	60.76	39.03	38.98	38.95
2/21/2007 15:00	56.22	54.81	54.80	54.81	54.77	54.77	54.83	54.81	64.04	54.81	54.79	54.78
2/21/2007 16:00	39.74	35.93	35.89	35.93	35.83	35.83	35.97	35.92	60.71	35.94	35.89	35.85
2/21/2007 17:00	23.81	16.69	16.68	16.78	16.55	16.56	16.82	16.69	62.45	16.76	16.64	16.59
2/21/2007 18:00	21.91	14.89	14.88	14.98	14.75	14.76	15.02	14.89	60.09	14.96	14.84	14.78
2/21/2007 19:00	52.62	50.66	50.66	50.69	50.62	50.62	50.70	50.66	63.68	50.68	50.65	50.63
2/21/2007 20:00	55.36	53.50	53.50	53.53	53.46	53.47	53.54	53.50	65.71	53.52	53.49	53.47
2/21/2007 21:00	31.95	25.98	25.97	26.06	25.86	25.86	26.09	25.98	64.94	26.04	25.94	25.88
2/21/2007 22:00	33.03	27.79	27.78	27.86	27.69	27.69	27.89	27.79	61.44	27.84	27.75	27.71
2/21/2007 23:00	22.68	17.21	17.15	17.21	17.06	17.07	17.26	17.19	51.32	17.22	17.15	17.10
2/22/2007 0:00	21.81	17.36	17.29	17.32	17.22	17.23	17.38	17.33	44.43	17.35	17.30	17.26

Table B:
Average Prices by Hour for
Load Settlement Locations and SPP-Wide

Hour Ending CPT	SPP	CSWS	EDE	GRDA	KACY	KCPL	OKGE	SECI	SPS	WFEC	WPEK	WR
2/22/2007 1:00	24.29	24.29	24.29	24.29	24.29	24.29	24.29	24.29	24.29	24.29	24.29	24.29
2/22/2007 2:00	16.36	15.23	15.22	15.23	15.20	15.20	15.24	15.23	21.98	15.23	15.22	15.21
2/22/2007 3:00	15.85	14.52	14.50	14.51	14.48	14.48	14.53	14.52	22.42	14.52	14.51	14.49
2/22/2007 4:00	17.59	15.07	15.04	15.05	15.00	15.00	15.09	15.06	29.99	15.07	15.04	15.02
2/22/2007 5:00	19.21	16.61	16.59	16.61	16.55	16.55	16.64	16.61	32.12	16.62	16.59	16.56
2/22/2007 6:00	42.57	42.49	42.49	42.49	42.49	42.49	42.49	42.49	43.00	42.49	42.49	42.49
2/22/2007 7:00	58.01	56.69	56.68	56.70	56.66	56.66	56.71	56.69	65.25	56.70	56.68	56.67
2/22/2007 8:00	52.04	49.94	49.93	49.96	49.89	49.90	49.97	49.93	63.58	49.95	49.92	49.90
2/22/2007 9:00	40.71	36.56	36.54	36.60	36.47	36.47	36.63	36.55	63.32	36.59	36.52	36.48
2/22/2007 10:00	55.87	54.53	54.52	54.54	54.50	54.50	54.55	54.52	63.17	54.54	54.51	54.50
2/22/2007 11:00	35.22	30.13	30.12	30.18	30.02	30.02	30.22	30.12	62.91	30.17	30.08	30.04
2/22/2007 12:00	31.04	25.32	25.31	25.38	25.20	25.20	25.42	25.31	62.01	25.37	25.27	25.22
2/22/2007 13:00	38.74	35.02	35.04	35.07	34.99	34.99	35.08	35.04	58.79	35.06	35.02	35.00
2/22/2007 14:00	52.77	52.39	52.40	52.40	52.39	52.39	52.39	52.39	54.82	52.39	52.39	52.39
2/22/2007 15:00	42.93	41.30	41.32	41.33	41.31	41.31	41.31	41.31	51.68	41.31	41.31	41.31
2/22/2007 16:00	30.48	26.09	26.15	26.17	26.13	26.13	26.13	26.13	53.88	26.13	26.13	26.13
2/22/2007 17:00	35.44	31.51	31.56	31.58	31.54	31.54	31.54	31.54	56.17	31.54	31.54	31.54
2/22/2007 18:00	46.44	46.34	44.21	43.92	44.20	44.20	43.38	43.86	55.94	43.31	43.95	44.15
2/22/2007 19:00	67.73	67.29	67.29	67.29	67.29	67.29	67.29	67.29	70.18	67.29	67.29	67.29
2/22/2007 20:00	62.94	62.94	62.94	62.94	62.94	62.94	62.94	62.94	62.94	62.94	62.94	62.94
2/22/2007 21:00	63.42	63.42	63.42	63.42	63.42	63.42	63.42	63.42	63.42	63.42	63.42	63.42
2/22/2007 22:00	42.67	41.46	41.46	41.47	41.44	41.44	41.49	41.46	49.13	41.47	41.45	41.44
2/22/2007 23:00	41.62	41.37	41.37	41.37	41.37	41.37	41.38	41.37	42.89	41.37	41.37	41.37
2/23/2007 0:00	18.88	18.68	18.67	18.67	18.67	18.67	18.68	18.67	19.91	18.67	18.67	18.67

Table B:
Average Prices by Hour for
Load Settlement Locations and SPP-Wide

Hour Ending CPT	SPP	CSWS	EDE	GRDA	KACY	KCPL	OKGE	SECI	SPS	WFEC	WPEK	WR
2/23/2007 1:00	16.77	16.37	16.36	16.36	16.35	16.36	16.37	16.36	18.76	16.36	16.36	16.36
2/23/2007 2:00	16.76	16.55	16.53	16.54	16.52	16.52	16.55	16.38	17.86	16.55	16.45	16.52
2/23/2007 3:00	17.79	16.86	16.72	16.86	16.52	16.53	16.95	14.37	23.20	16.87	15.46	16.45
2/23/2007 4:00	21.51	21.31	21.26	21.32	21.19	21.19	21.35	20.32	22.78	21.32	20.76	21.16
2/23/2007 5:00	23.89	23.60	23.52	23.60	23.41	23.42	23.65	22.16	25.83	23.61	22.80	23.37
2/23/2007 6:00	42.08	41.95	41.91	41.95	41.86	41.86	41.97	41.23	42.99	41.95	41.55	41.84
2/23/2007 7:00	62.17	64.07	64.29	64.40	65.52	65.51	64.26	43.73	53.24	63.80	16.73	68.12
2/23/2007 8:00	52.92	52.29	52.28	52.28	52.27	52.27	52.29	52.28	56.34	52.29	52.28	52.27
2/23/2007 9:00	48.66	46.99	46.96	46.98	46.93	46.94	47.00	46.98	57.73	46.98	46.96	46.95
2/23/2007 10:00	63.74	63.74	63.74	63.74	63.74	63.74	63.74	63.74	63.74	63.74	63.74	63.74
2/23/2007 11:00	54.58	54.48	54.48	54.48	54.48	54.48	54.48	54.48	55.15	54.48	54.48	54.48
2/23/2007 12:00	46.24	46.24	46.24	46.24	46.24	46.24	46.24	46.24	46.24	46.24	46.24	46.24
2/23/2007 13:00	27.59	27.29	27.29	27.29	27.28	27.28	27.29	27.29	29.23	27.29	27.29	27.28
2/23/2007 14:00	22.58	22.20	22.20	22.20	22.19	22.19	22.20	22.20	24.62	22.20	22.20	22.19
2/23/2007 15:00	19.35	18.35	18.34	18.35	18.32	18.32	18.36	18.35	24.73	18.35	18.34	18.33
2/23/2007 16:00	20.67	19.85	19.79	19.85	19.70	19.71	19.89	18.91	25.37	19.85	19.32	19.69
2/23/2007 17:00	16.55	15.42	15.36	15.41	15.30	15.30	15.45	14.73	22.82	15.42	15.02	15.28
2/23/2007 18:00	17.74	16.96	16.90	16.96	16.80	16.81	17.00	15.91	22.33	16.97	16.37	16.78
2/23/2007 19:00	43.93	43.83	43.82	43.83	43.80	43.80	43.83	43.66	44.56	43.83	43.73	43.80
2/23/2007 20:00	38.30	38.30	38.30	38.30	38.30	38.30	38.30	38.30	38.30	38.30	38.30	38.30
2/23/2007 21:00	32.84	32.81	32.80	32.81	32.78	32.78	32.81	32.59	33.11	32.81	32.69	32.77
2/23/2007 22:00	41.34	40.17	40.00	40.17	39.77	39.78	40.27	37.27	48.62	40.19	38.54	39.70
2/23/2007 23:00	42.63	42.63	42.63	42.63	42.63	42.63	42.63	42.63	42.63	42.63	42.63	42.63
2/24/2007 0:00	15.72	15.72	15.72	15.72	15.72	15.72	15.72	15.72	15.72	15.72	15.72	15.72

Table B:
Average Prices by Hour for
Load Settlement Locations and SPP-Wide

Hour Ending CPT	SPP	CSWS	EDE	GRDA	KACY	KCPL	OKGE	SECI	SPS	WFEC	WPEK	WR
2/24/2007 1:00	14.01	13.67	13.67	13.67	13.66	13.66	13.67	13.67	15.64	13.67	13.67	13.66
2/24/2007 2:00	23.15	23.15	23.15	23.15	23.15	23.15	23.15	23.15	23.15	23.15	23.15	23.15
2/24/2007 3:00	20.89	20.64	20.63	20.64	20.63	20.63	20.64	20.60	22.08	20.64	20.61	20.63
2/24/2007 4:00	19.99	21.15	19.56	19.41	19.48	19.48	19.08	18.25	20.68	18.97	18.80	19.40
2/24/2007 5:00	16.15	16.14	16.14	16.14	16.14	16.14	16.14	16.14	16.17	16.14	16.14	16.14
2/24/2007 6:00	20.77	20.63	20.63	20.63	20.63	20.63	20.63	20.63	21.38	20.63	20.63	20.63
2/24/2007 7:00	50.90	50.01	51.14	49.42	57.05	57.36	49.17	49.50	49.18	49.57	47.30	52.44
2/24/2007 8:00	24.97	21.37	25.94	19.12	49.21	50.29	18.13	19.43	18.17	19.69	10.67	31.03
2/24/2007 9:00	67.81	58.67	70.25	53.04	128.89	131.38	50.38	53.10	51.52	54.41	31.19	82.93
2/24/2007 10:00	62.21	59.86	62.90	58.39	78.21	78.76	57.71	58.57	57.74	58.74	52.75	66.24
2/24/2007 11:00	80.53	70.64	83.08	63.74	149.12	151.45	60.68	64.52	61.03	65.35	39.48	97.57
2/24/2007 12:00	44.99	43.00	45.41	41.21	59.78	60.27	40.63	41.43	40.69	41.64	35.96	48.59
2/24/2007 13:00	93.62	80.08	96.10	68.17	191.88	195.15	64.17	69.62	64.73	71.04	33.45	117.26
2/24/2007 14:00	78.01	68.08	79.73	59.44	149.86	152.42	56.40	60.49	56.89	61.45	34.24	95.26
2/24/2007 15:00	80.99	71.99	82.59	64.19	146.44	148.61	61.26	65.41	61.92	66.03	41.40	96.77
2/24/2007 16:00	29.14	28.34	29.28	27.63	34.95	35.13	27.37	27.74	27.44	27.80	25.61	30.54
2/24/2007 17:00	25.30	24.64	25.40	24.09	29.98	30.14	23.88	24.21	23.96	24.23	22.67	26.42
2/24/2007 18:00	48.50	44.38	49.25	40.84	78.71	79.78	39.48	41.63	40.03	41.71	31.71	55.79
2/24/2007 19:00	58.60	58.07	58.70	57.61	62.49	62.61	57.44	57.72	57.51	57.72	56.42	59.54
2/24/2007 20:00	78.78	73.89	80.11	69.47	117.73	118.99	67.57	70.33	68.28	70.40	57.39	87.68
2/24/2007 21:00	48.32	48.32	48.32	48.32	48.32	48.32	48.32	48.32	48.32	48.32	48.32	48.32
2/24/2007 22:00	46.52	46.52	46.52	46.52	46.52	46.52	46.52	46.52	46.52	46.52	46.52	46.52
2/24/2007 23:00	44.66	44.01	43.83	44.02	43.56	43.57	44.13	40.53	49.10	44.03	42.03	43.47
2/25/2007 0:00	31.19	29.61	29.26	29.61	28.75	28.78	29.84	23.11	41.16	29.65	25.89	28.58

Table B:
Average Prices by Hour for
Load Settlement Locations and SPP-Wide

Hour Ending CPT	SPP	CSWS	EDE	GRDA	KACY	KCPL	OKGE	SECI	SPS	WFEC	WPEK	WR
2/25/2007 1:00	23.85	20.13	19.72	20.14	19.12	19.14	20.41	12.75	44.38	20.18	15.92	18.93
2/25/2007 2:00	27.87	26.40	24.85	26.18	23.10	23.14	27.79	18.70	40.56	27.39	20.20	22.35
2/25/2007 3:00	33.37	32.36	30.90	32.16	29.23	29.27	33.64	23.75	43.78	33.24	25.88	28.52
2/25/2007 4:00	40.03	39.15	38.26	39.04	37.22	37.25	39.91	32.71	47.79	39.64	34.63	36.78
2/25/2007 5:00	44.07	43.98	43.96	43.98	43.93	43.93	44.00	43.54	44.66	43.99	43.73	43.91
2/25/2007 6:00	24.74	24.07	23.93	24.08	23.66	23.66	24.19	20.78	29.05	24.11	22.21	23.57
2/25/2007 7:00	21.53	20.92	20.86	20.92	20.64	20.65	21.01	18.74	25.22	20.95	19.70	20.59
2/25/2007 8:00	33.08	32.11	32.03	32.11	31.74	31.75	32.24	29.18	38.88	32.15	30.48	31.67
2/25/2007 9:00	60.52	60.52	60.52	60.52	60.52	60.52	60.52	60.52	60.52	60.52	60.52	60.52
2/25/2007 10:00	62.50	62.50	62.50	62.50	62.50	62.50	62.50	62.50	62.50	62.50	62.50	62.50
2/25/2007 11:00	49.15	49.15	49.15	49.15	49.15	49.15	49.15	49.15	49.15	49.15	49.15	49.15
2/25/2007 12:00	29.39	29.39	29.39	29.39	29.39	29.39	29.39	29.39	29.39	29.39	29.39	29.39
2/25/2007 13:00	24.49	24.35	24.35	24.35	24.35	24.35	24.35	24.35	25.23	24.35	24.35	24.35
2/25/2007 14:00	23.57	23.57	23.57	23.57	23.57	23.57	23.57	23.57	23.57	23.57	23.57	23.57
2/25/2007 15:00	27.22	27.22	27.22	27.22	27.22	27.22	27.22	27.22	27.22	27.22	27.22	27.22
2/25/2007 16:00	27.41	27.41	27.41	27.41	27.41	27.41	27.41	27.41	27.41	27.41	27.41	27.41
2/25/2007 17:00	47.46	40.31	47.67	34.80	92.19	93.52	33.04	35.80	33.53	36.29	19.16	57.81
2/25/2007 18:00	88.14	68.43	88.32	53.39	209.89	213.48	48.43	56.06	49.85	57.42	10.74	116.09
2/25/2007 19:00	102.56	87.97	102.82	76.68	194.76	197.29	72.83	78.58	73.89	79.66	44.33	123.97
2/25/2007 20:00	67.10	67.04	67.10	66.99	67.49	67.50	66.97	67.00	66.98	67.00	66.85	67.19
2/25/2007 21:00	64.37	64.37	64.37	64.37	64.37	64.37	64.37	64.37	64.37	64.37	64.37	64.37
2/25/2007 22:00	64.41	64.19	64.44	64.00	66.01	66.05	63.93	64.03	63.95	64.05	63.44	64.80
2/25/2007 23:00	35.37	35.25	35.22	35.25	35.17	35.17	35.27	34.59	36.23	35.26	34.89	35.15
2/26/2007 0:00	15.64	15.40	15.35	15.40	15.28	15.29	15.43	14.52	17.25	15.40	14.91	15.26

Table B:
Average Prices by Hour for
Load Settlement Locations and SPP-Wide

Hour Ending CPT	SPP	CSWS	EDE	GRDA	KACY	KCPL	OKGE	SECI	SPS	WFEC	WPEK	WR
2/26/2007 1:00	19.61	19.32	19.28	19.32	19.22	19.22	19.35	18.56	21.38	19.33	18.90	19.20
2/26/2007 2:00	24.76	24.69	24.67	24.69	24.64	24.64	24.70	24.29	25.28	24.69	24.46	24.63
2/26/2007 3:00	23.06	23.00	22.98	23.00	22.96	22.96	23.01	22.67	23.49	23.00	22.82	22.95
2/26/2007 4:00	35.20	35.20	35.20	35.20	35.20	35.20	35.20	35.20	35.20	35.20	35.20	35.20
2/26/2007 5:00	47.65	47.65	47.65	47.65	47.65	47.65	47.65	47.65	47.65	47.65	47.65	47.65
2/26/2007 6:00	66.86	59.62	67.88	52.25	122.14	124.62	50.35	53.49	50.67	54.10	33.25	80.22
2/26/2007 7:00	54.84	54.84	54.84	54.84	54.84	54.84	54.84	54.84	54.84	54.84	54.84	54.84
2/26/2007 8:00	73.79	71.25	74.12	68.77	92.93	93.51	68.05	69.14	68.16	69.36	62.07	78.39
2/26/2007 9:00	67.75	65.26	68.02	62.99	85.81	86.43	62.27	63.34	62.42	63.55	56.62	72.08
2/26/2007 10:00	58.04	58.04	58.04	58.04	58.04	58.04	58.04	58.04	58.04	58.04	58.04	58.04
2/26/2007 11:00	73.99	70.00	74.45	66.17	102.37	103.20	65.32	66.89	65.54	67.46	56.17	81.08
2/26/2007 12:00	55.25	55.25	55.25	55.25	55.25	55.25	55.25	55.25	55.25	55.25	55.25	55.25
2/26/2007 13:00	49.81	49.81	49.81	49.81	49.81	49.81	49.81	49.81	49.81	49.81	49.81	49.81
2/26/2007 14:00	58.52	54.12	58.92	49.94	89.50	90.50	49.11	50.81	49.32	51.43	39.07	66.40
2/26/2007 15:00	35.57	35.57	35.57	35.57	35.57	35.57	35.57	35.57	35.57	35.57	35.57	35.57
2/26/2007 16:00	38.65	38.65	38.65	38.65	38.65	38.65	38.65	38.65	38.65	38.65	38.65	38.65
2/26/2007 17:00	36.49	36.49	36.49	36.49	36.49	36.49	36.49	36.49	36.49	36.49	36.49	36.49
2/26/2007 18:00	34.36	34.31	34.31	34.31	34.31	34.31	34.31	34.31	34.63	34.31	34.31	34.31
2/26/2007 19:00	49.57	49.31	49.58	49.08	51.31	51.35	49.03	49.16	49.05	49.16	48.45	50.00
2/26/2007 20:00	60.28	58.72	60.38	57.25	71.12	71.35	56.95	57.73	57.08	57.76	53.35	63.00
2/26/2007 21:00	50.01	50.01	50.01	50.01	50.01	50.01	50.01	50.01	50.01	50.01	50.01	50.01
2/26/2007 22:00	51.86	51.66	51.66	51.66	51.54	51.54	51.72	50.59	53.33	51.69	51.10	51.52
2/26/2007 23:00	24.25	23.59	23.51	23.59	23.12	23.13	23.76	19.72	29.47	23.66	21.52	23.04
2/27/2007 0:00	22.51	21.45	21.26	21.45	20.65	20.68	21.70	15.21	30.76	21.53	18.07	20.52

Table B:
Average Prices by Hour for
Load Settlement Locations and SPP-Wide

Hour Ending CPT	SPP	CSWS	EDE	GRDA	KACY	KCPL	OKGE	SECI	SPS	WFEC	WPEK	WR
2/27/2007 1:00	22.33	22.29	22.28	22.29	22.26	22.26	22.29	22.05	22.64	22.29	22.16	22.25
2/27/2007 2:00	19.91	19.71	19.68	19.71	19.58	19.58	19.76	18.64	21.32	19.73	19.13	19.55
2/27/2007 3:00	19.38	19.38	19.38	19.38	19.38	19.38	19.38	19.38	19.38	19.38	19.38	19.38
2/27/2007 4:00	20.18	20.18	20.18	20.18	20.18	20.18	20.18	20.18	20.18	20.18	20.18	20.18
2/27/2007 5:00	23.43	23.43	23.43	23.43	23.43	23.43	23.43	23.43	23.43	23.43	23.43	23.43
2/27/2007 6:00	44.38	44.28	44.28	44.28	44.23	44.23	44.31	43.80	45.02	44.29	44.03	44.22
2/27/2007 7:00	131.55	108.69	130.58	83.13	285.76	291.35	80.32	116.75	93.42	93.12	36.38	174.01
2/27/2007 8:00	84.96	81.17	87.69	55.06	152.61	154.66	59.02	75.89	65.00	65.44	39.94	102.29
2/27/2007 9:00	39.85	37.45	39.72	34.86	55.60	56.09	34.66	38.29	35.96	35.94	30.16	44.16
2/27/2007 10:00	75.38	62.52	74.35	49.05	157.17	160.17	47.99	67.67	55.20	54.82	25.19	97.98
2/27/2007 11:00	33.12	32.11	33.02	31.09	39.42	39.65	31.02	32.54	31.58	31.55	29.25	34.85
2/27/2007 12:00	19.09	19.09	19.09	19.09	19.09	19.09	19.09	19.09	19.09	19.09	19.09	19.09
2/27/2007 13:00	22.22	22.22	22.22	22.22	22.22	22.22	22.22	22.22	22.22	22.22	22.22	22.22
2/27/2007 14:00	28.15	27.80	28.10	27.44	30.33	30.42	27.42	27.95	27.62	27.60	26.82	28.75
2/27/2007 15:00	22.06	22.06	22.06	22.06	22.06	22.06	22.06	22.06	22.06	22.06	22.06	22.06
2/27/2007 16:00	21.77	21.77	21.77	21.77	21.77	21.77	21.77	21.77	21.77	21.77	21.77	21.77
2/27/2007 17:00	16.55	16.50	16.50	16.50	16.48	16.48	16.51	16.28	16.88	16.51	16.38	16.47
2/27/2007 18:00	23.17	19.20	19.56	18.73	21.91	22.04	19.00	13.16	43.26	19.05	14.45	19.62
2/27/2007 19:00	112.26	86.73	109.52	61.53	271.91	277.24	57.53	96.36	71.56	70.66	14.32	156.76
2/27/2007 20:00	78.16	68.42	77.32	58.59	140.86	142.87	56.81	72.17	62.45	62.11	39.91	95.73
2/27/2007 21:00	49.15	43.52	48.68	37.93	85.18	86.40	36.99	45.76	40.18	39.91	26.80	59.31
2/27/2007 22:00	53.31	46.63	52.73	40.15	95.35	96.79	39.07	48.87	43.48	42.48	26.67	65.11
2/27/2007 23:00	21.02	20.02	20.00	20.01	19.64	19.65	20.20	16.65	27.23	20.10	18.30	19.57
2/28/2007 0:00	16.61	15.86	15.84	15.85	15.57	15.58	15.99	13.31	21.17	15.92	14.52	15.53

Table B:
Average Prices by Hour for
Load Settlement Locations and SPP-Wide

Hour Ending CPT	SPP	CSWS	EDE	GRDA	KACY	KCPL	OKGE	SECI	SPS	WFEC	WPEK	WR
2/28/2007 1:00	15.87	14.80	14.79	14.80	14.65	14.66	14.87	13.60	21.55	14.83	14.15	14.63
2/28/2007 2:00	20.59	20.59	20.59	20.59	20.59	20.59	20.59	20.59	20.59	20.59	20.59	20.59
2/28/2007 3:00	16.36	16.36	16.36	16.36	16.36	16.36	16.36	16.36	16.36	16.36	16.36	16.36
2/28/2007 4:00	14.33	14.24	14.24	14.24	14.24	14.24	14.24	14.24	14.79	14.24	14.24	14.24
2/28/2007 5:00	15.34	15.19	15.19	15.19	15.19	15.19	15.20	15.19	16.07	15.19	15.19	15.19
2/28/2007 6:00	15.74	15.25	15.24	15.25	15.24	15.24	15.25	15.25	18.33	15.25	15.24	15.24
2/28/2007 7:00	73.21	47.16	47.07	47.41	46.56	46.58	47.59	47.10	215.96	47.33	46.93	46.70
2/28/2007 8:00	27.28	27.13	27.12	27.13	27.04	27.05	27.17	26.37	28.30	27.15	26.73	27.03
2/28/2007 9:00	21.05	21.01	21.01	21.01	20.99	20.99	21.02	20.80	21.35	21.02	20.90	20.99
2/28/2007 10:00	24.92	24.80	24.80	24.80	24.74	24.74	24.83	24.25	25.67	24.82	24.51	24.73
2/28/2007 11:00	26.39	26.34	26.33	26.33	26.30	26.30	26.35	26.04	26.79	26.34	26.18	26.30
2/28/2007 12:00	52.46	48.01	52.70	43.88	81.23	82.41	43.01	51.08	45.67	45.38	33.64	59.84
2/28/2007 13:00	20.86	20.71	20.70	20.71	20.62	20.62	20.75	19.93	21.93	20.73	20.30	20.60
2/28/2007 14:00	36.42	36.42	36.42	36.42	36.42	36.42	36.42	36.42	36.42	36.42	36.42	36.42
2/28/2007 15:00	33.08	33.08	33.08	33.08	33.08	33.08	33.08	33.08	33.08	33.08	33.08	33.08
2/28/2007 16:00	21.90	21.79	21.78	21.79	21.73	21.73	21.82	21.24	22.65	21.80	21.50	21.72
2/28/2007 17:00	23.54	23.49	23.48	23.49	23.45	23.45	23.50	23.20	23.94	23.49	23.33	23.45
2/28/2007 18:00	35.57	35.57	35.57	35.57	35.57	35.57	35.57	35.57	35.57	35.57	35.57	35.57
2/28/2007 19:00	41.44	41.44	41.44	41.44	41.44	41.44	41.44	41.44	41.44	41.44	41.44	41.44
2/28/2007 20:00	52.88	52.88	52.88	52.88	52.88	52.88	52.88	52.88	52.88	52.88	52.88	52.88
2/28/2007 21:00	47.86	47.86	47.86	47.86	47.86	47.86	47.86	47.86	47.86	47.86	47.86	47.86
2/28/2007 22:00	32.06	31.32	31.30	31.31	30.95	30.96	31.48	28.12	36.96	31.40	29.61	30.89
2/28/2007 23:00	22.64	21.62	21.61	21.62	21.39	21.40	21.73	19.73	28.35	21.67	20.60	21.36
3/1/2007 0:00	14.66	13.62	13.61	13.62	13.55	13.55	13.65	13.22	19.88	13.63	13.39	13.55



2008 Compliance Department Projected Budget
[Preliminary]

March 22, 2007

Manpower [Salaries only - \$397,600 using SPP Mid-point salaries]

Requested Staff for 2007:

- Director
- Senior Engineer
- Senior Engineer [Additional manpower request]**
- Engineer II

Notes: The increase in staff requested for 2008 [**one additional full time equivalent**] is to meet the proposed increases in both the number of entities that will be under the jurisdiction of the SPP compliance program and the expansion of the number of standards included in the annual programs. The proposed additional senior engineer will be assigned some of the duties that the Director presently performs; specifically the regional co-lead on all NERC sponsored Readiness Evaluations. 2007 Salaries estimated at ~ \$302,800.

Travel [Total \$84,000]

- Ron - \$25,000
- Kevin - \$22,000
- Sr. Engineer - \$22,000
- Engineer II - \$12,000

Notes: Increase of **\$34,000** over 2007 due to travel cost increases plus additional duties.

Continuing Education [Total \$15,000]

- Ron - \$4,000 [PE license plus Law license]
- Kevin - \$4,000 [PE license plus NERC Certified Operator license]
- Sr. Engineer - \$4,000 [PE license]
- Engineer II - \$3,000

Notes: This item has increased slightly [**up \$4,000**] due to the addition of the Sr. Engineer to the department.

SPP Meetings [Total \$10,000]

- 2 Compliance Workshops [Spring/Fall]

Notes: Small increase [**up \$2,000**] due to increased meeting costs.

Outside Services [Total \$221,000]

- MAPPCORP Compliance Database Management Services - \$60,000
- MAPPCORP Personnel Travel Expenses - \$10,000
- Independent Compliance Reviews 8 @ \$17,000 = \$136,000
- Independent review of Compliance Program - \$15,000

2008 Compliance Department Budget

Notes: This item has been increased [**up \$ 16,000**] based on:

1. Anticipated Compliance Review price increase [up \$2,000 per review or 8 x \$1,000=**\$16,000**]

TOTALS

2008 Projected: \$727,600 [+ \$150,800 over 2007]

2007 Approved: \$576,800

IMPORTANT NOTES

Budget **DOES NOT INCLUDE** the following:

- Overhead multipliers for salaries
- Office Space
- Personal Computers
- Telecommunications devices
- Reimbursement to SPP members that serve on NERC Committees

Prepared by: Ronald W. Ciesiel
Director of Compliance
Southwest Power Pool



**Southwest Power Pool
Compliance Group Financials**

Thousands

	2006 Actuals	2006 Budget	Variance	2006 Actuals	2007 Budget*	Variance
Ordinary Income/Expense						
Expense						
Salary & Benefits	\$267.8	\$254.8	\$13.0	\$267.8	\$424.1	(\$156.3)
Employee Travel	41.7	38.0	3.7	41.7	50.0	(8.3)
Administrative	1.7	1.3	0.4	1.7		1.7
Meetings	12.5		12.5	12.5	8.0	4.5
Maintenance		6.7	(6.7)			0.0
Services	161.1	168.0	(6.9)	161.1	205.0	(43.9)
Total Expense	484.8	468.8	16.0	484.8	687.1	(202.3)

** 2007 operating budget includes additional Regional Entity travel and meeting costs approved by SPP's Board of Directors. These costs are not reflected on this analysis since no costs were incurred in 2006.*