

**SOUTHWEST POWER POOL**  
**DELIVERABILITY STEERING COMMITTEE MEETING**  
Friday, May 11, 2022  
Teleconference

## **MINUTES**

### **AGENDA ITEM 1 – ADMINISTRATIVE ITEMS**

DSC Chair Denise Buffington (Evergy) called the meeting to order at 1:00 pm. Six of seven members were in attendance or represented by proxy. The full list of attendees is attached.

There being no additions or corrections, the minutes of both the March 22 and April 22, 2022 meetings were approved by unanimous consent.

### **AGENDA ITEM 2 – CRIS TRANSITION STUDY SCOPE**

Steve Purdy reviewed a rough draft of the CRIS transition study scope and facilitated group discussion of the merits of the proposal (*see attached*).

### **AGENDA ITEM 3 – SUMMARY OF ACTION ITEMS**

There were no action items.

### **AGENDA ITEM 4 – DISCUSSION OF FUTURE MEETINGS**

Steve noted that the next meeting is scheduled for Wednesday, June 15 at 1:00 pm.

There being no further business, the meeting was adjourned at 2:10 pm.

Respectfully Submitted,

*Steve Purdy*

Secretary

#### Attachments

- Agenda
- Attendance List
- CRIS Transition Study Scope presentation



**SOUTHWEST POWER POOL, INC.  
DELIVERABILITY STEERING COMMITTEE MEETING**

**Wednesday, May 11, 2022  
Teleconference**

1:00 pm – 3:00 pm CDT

1. Administrative Items..... Denise Buffington (Evergy) 5
  - a. Call to order & introductions
  - b. Anti-trust statement
  - c. Review proxies
  - d. Agenda review
  - e. Minutes of the previous meeting(s)
  - f. Review action items
2. CRIS Transition Study Scope ..... Steve Purdy (SPP) 60
3. Summary of Action Items..... Steve Purdy 4
4. Discussion of Future Meetings..... All 1
  - Wednesday, June 15, 1-3pm
  - Wednesday, July 6, 1-3 pm
  - Wednesday, August 10, 1-3pm
  - Wednesday, September 14, 1-3pm
  - Wednesday, October 5, 1-3 pm
  - Wednesday, November 9, 1-3pm

**Antitrust:** SPP strictly prohibits use of participation in SPP activities as a forum for engaging in practices or communications that violate the antitrust laws. Please avoid discussion of topics or behavior that would result in anti-competitive behavior, including but not limited to, agreements between or among competitors regarding prices, bid and offer practices, availability of service, product design, terms of sale, division of markets, allocation of customers or any other activity that might unreasonably restrain competition.

**Attendance List**  
**DSC Meeting**  
**May 11, 2022**

1		Adam Schieffer
2		Ashlyn Collie
3		Bakhtawar Khan
4		Bernie Liu
5		Brian Rounds
6		Calvin Daniels
7		Charles Hendrix
8		Christine Aarnes
9		Cindy Ireland
10		Daria Diaz
11		David Kelley
12	†	Denise Buffington
13	†	Derek Brown
14	†	Derek Sunderman
15		Don Frerking-SPP
16	‡	Eric Laverty
17		Harika Basaran PUCT
18		Jason Chaplin
19		Jason Davis
20		Jason Mazigian
21		Jerry Bradshaw
22		Jim Jacoby (AEP)
23		John Boshears
24		Josh Ross
25		Kristin Littlefield
26		Margaret Kristian
27		Marisa Choate
28		Orijit Ghoshal
29		Peter Jones
30	†	Robert Pick
31		Ryan Yokley
32		Steve Gaw
33		Steve Purdy
34		Tom Hestermann
35	†	Victor Schock
36		Walt Cecil

† DSC Member

‡ Proxy for Natasha Henderson



# CRIS TRANSITION STUDY SCOPE

*Working together to responsibly and economically  
keep the lights on today and in the future.*



SouthwestPowerPool



SPPorg



southwest-power-pool

# CRIS TRANSITION STUDY ROUGH DRAFT PROPOSAL

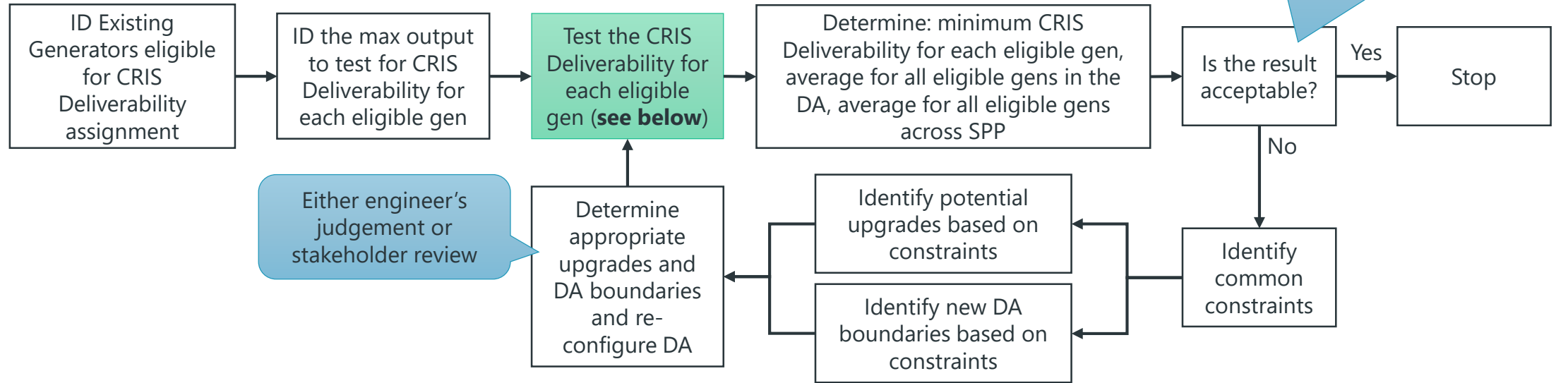
- Objectives

- Determine the amount of CRIS Deliverability to assign to every Eligible Existing Generator.
- Determine the scope and size of Deliverability Areas.

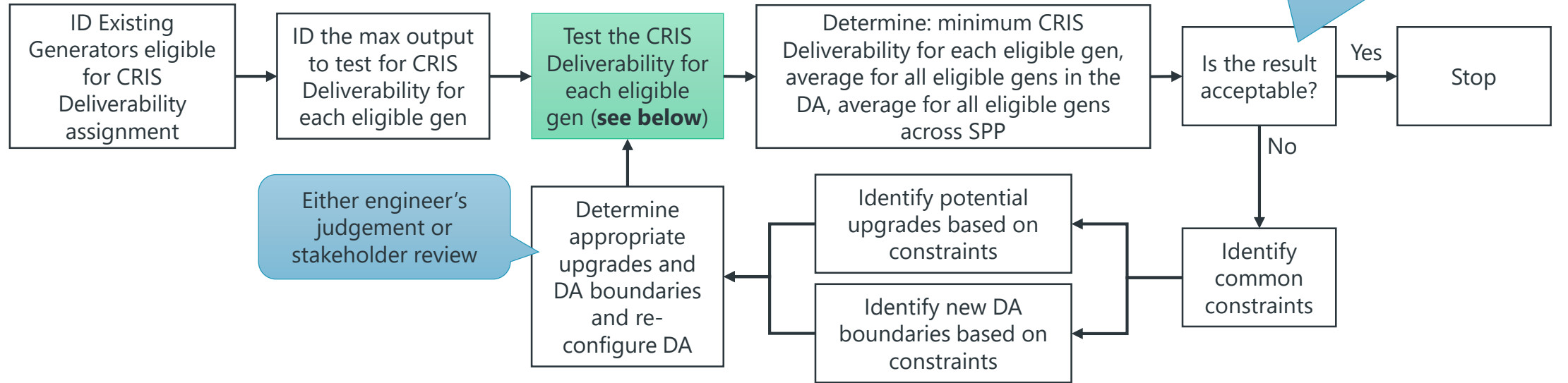
- Definitions

- CRIS Deliverability is the amount of real power in megawatts that can be reliably transmitted from a generator to any load within the same Deliverability Area.
- Deliverability Area (DA) is a defined, contiguous portion of the SPP Transmission System.
- Eligible Existing Generator is a generator currently interconnected with the SPP Transmission System that either
  1. Has NRIS service, or
  2. Is associated with long-term firm transmission service to load within SPP

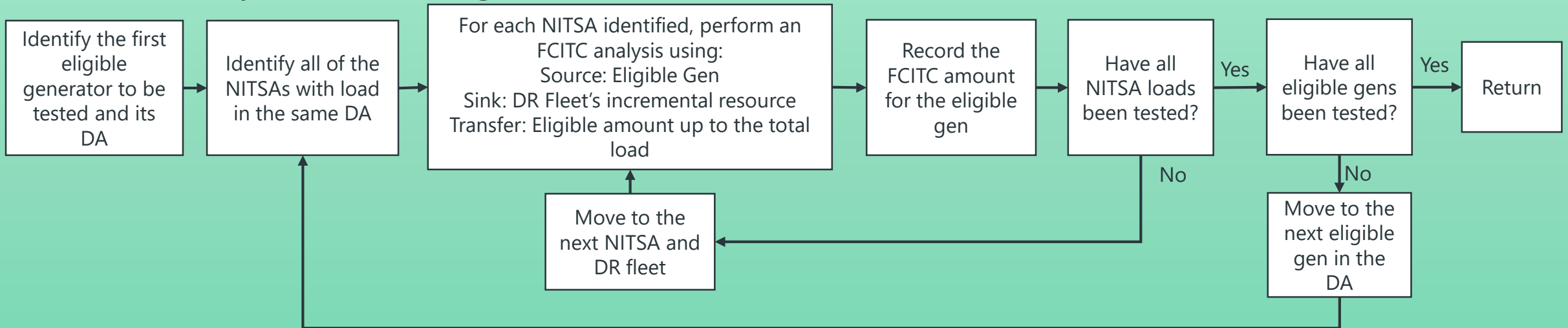
# Method Overview



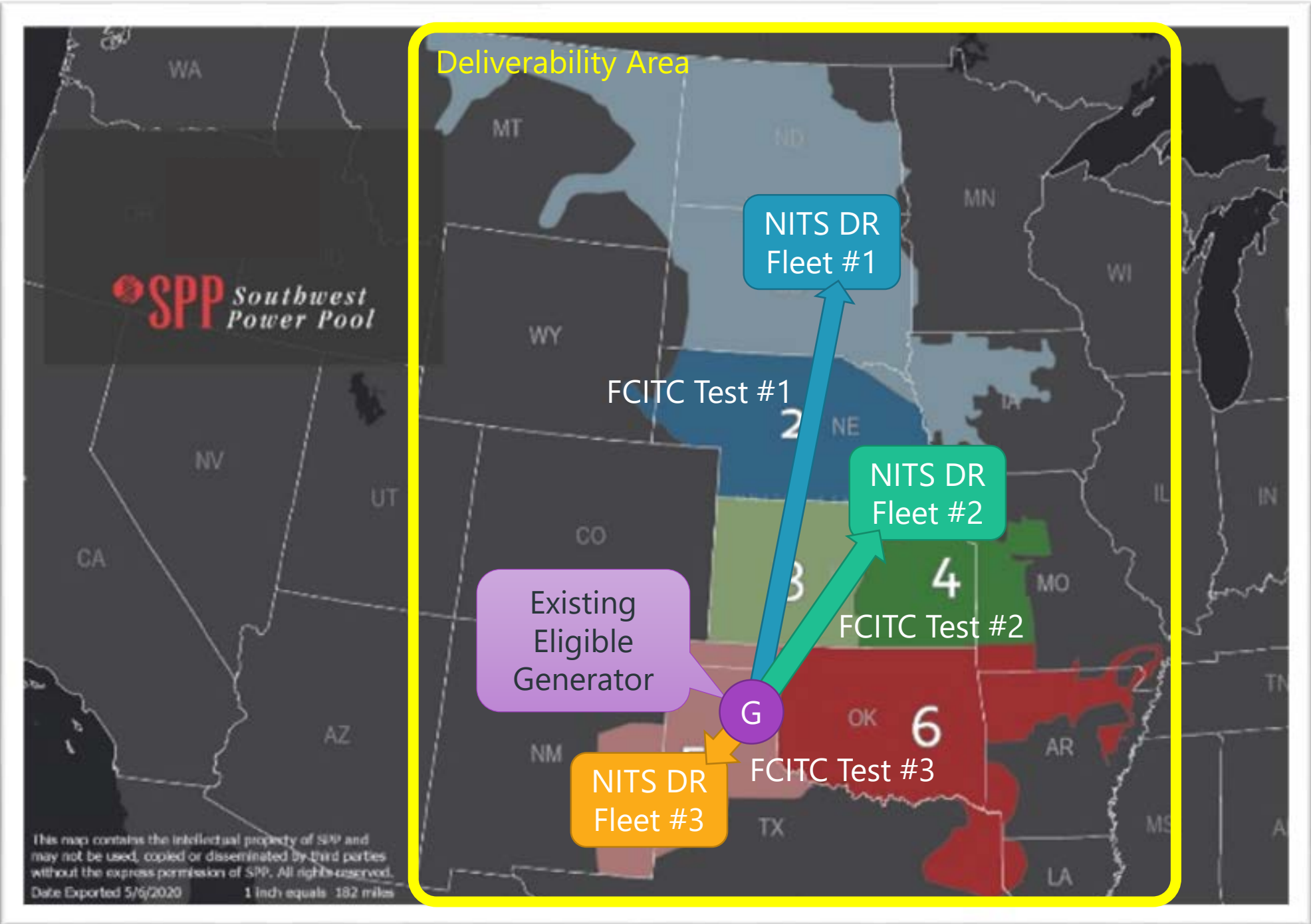
## Method Overview



## CRIS Deliverability Test for Each Eligible Generator



Visual of CRIS  
Deliverability Test  
Transfer Analysis





# DETAILS ON TRANSFER ANALYSIS

- NITS Load must be in the same DA as the EEG.
- DR Fleet's incremental unit(s) can be in a different DA or off-system (same as the ATSS).
- Transfer amount for each FCITC test is lower of
  - MW amount of NITS Load being tested within the same DA as the EEG, or
  - Higher of
    - Full NRIS MW capability of the EEG, or
    - Highest MW amount of firm transmission service with the EEG as source (to any load, not just the one being tested)

# OBSERVATIONS/CONCERNS

- Proposal is similar to the annual flowgate analysis. The result tends to be full deliverability because the individual transfers are relatively small with respect to the footprint. This method may not identify regional constraints.
- Proposal doesn't consider the impact of multiple resources in the same region delivering to the same loads.
- Can we leverage existing regional transfer analyses to determine initial DA boundaries? If so which? LOLE?
- Is a group transfer analysis needed to determine individual CRIS deliverability amounts? Which one? How would individual amounts be assigned?

# LIST OF EXISTING TRANSFER ANALYSES PROCESSES/TOOLS

- ITP Siting Process
  - FCITC for same POI to System
  - FCITC for same POI with similar limits to System
- LOLE Inter-area limits: Area-to-area or Area-to-System limit analysis
- EPRI Capacity Screening Tool
- Resource Adequacy Deliverability Study
  - FCITC simple single gen to system
  - Capture gens with same impacts
- Annual Flowgate Assessment: FCITC area-to-area and AFC zone-to-AFC zone
- NERC Inter-regional transfer analysis: sub-region to sub-region
- Aggregate Study: AC FCITC cluster of requests from specific source gen to specific sink gen
- GI Study: AC FCITC cluster of requests from specific source gen to system sink gen
- ITP Constraint Assessment: 8760 hr Economic Gen to Gen