



**Southwest Power Pool
REGIONAL STATE COMMITTEE
Doubletree Hotel at Warren Place
October 29, 2007**

• M I N U T E S •

Administrative Items:

Members in attendance or represented by proxy were:

- Julie Parsley, Public Utility Commission of Texas (PUCT)
- Jeff Cloud, Oklahoma Corporation Commission (OCC)
- Jeff Davis, Missouri Public Service Commission (MPSC)
- Mike Moffet, Kansas Corporation Commission (KCC)
- Paul Suskie, Arkansas Public Service Commission (APSC)

There were 53 in attendance (Attendance – Attachment 1). Others in attendance via phone:

- David Douglass, Aquila
- Walter Wolf, Stone, Pigman, Walther, Wittman, LLC
- Jay Caspary, Southwest Power Pool, Inc.

President Parsley called the meeting to order at 1:08 p.m. Cheryl Robertson (SPP) called roll and a quorum was declared. President Parsley asked for adoption of the July 23 and October 11, 2007 meeting minutes (RSC Minutes 7/23/07 and 10/11/07 - Attachment 2). **Jeff Cloud moved to approve the July and October minutes as presented. Mike Moffet seconded the motion. The minutes were approved by acclamation.**

Election of Officers:

President Parsley stated that the Annual Meeting is time to elect RSC officers for 2008. **Mike Moffet moved that Julie Parsley continue to serve as President. Jeff Cloud seconded the motion, which passed unanimously. President Parsley moved that David King serve as Vice President. Jeff Davis seconded the motion, which passed unanimously. President Parsley moved that Mike Moffet serve as Secretary/Treasurer. Jeff Davis seconded the motion, which passes unanimously.**

Updates:

RSC Financial Report

Les Dillahunt (SPP) presented the RSC Financial Report (RSC Financial Report – Attachment 3). Mr. Dillahunt reported that the RSC remained under budget for 2007 mainly due to the fact that no cost/ benefit study had been initiated and travel expenses remained below budget.

FERC Update

John Rogers provided an update on FERC activities:

- In October, the Commission approved an ISO New England proposal to improve market transparency by reducing the time to release of offer and bid market data from six to three months. This proposal is consistent with the Commission's proposal in an Advanced Notice of Proposed Rulemaking on Competition that the Commission issued in June.
- FERC conditionally accepted the 2008 NERC Business Plan and Budget for Regional Entities which also includes SPP's Regional Entity funding.

Regional State Committee
October 29, 2007

- The Commission issued decisions on two SPP proposals. On October 15, the Commission rejected SPP's proposal for permitting external generator participation in the energy imbalance market and directed SPP to file a new proposal in 60 days. On October 29, the Commission issued a data request in response to SPP's proposed amendments to its generator interconnection procedures.
- The Commission made two organizational changes. First, the Chairman elevated the Division of Reliability to the Office of Reliability in recognition of the growing importance of the Commission's work on reliability. As part of this change, Michael McLaughlin, Division Director of Market Development-Central, was named Deputy Office Director. Second, a new unit within the Office of Energy Market Regulation was formed. The Energy Innovations Unit will provide expertise to promote and manage the Commission's activities with regard to demand response, energy efficiency, distributed generation, renewable energy issues, and advanced technologies relevant to the transmission grid and wholesale markets.

SPP Update

Nick Brown provided an update on SPP activities. The SPP Strategic Planning Committee has reviewed progress on nine action items in the SPP Strategic Plan and has rated four items as A priorities. Two items discussed in depth were the EHV Overlay and the Transmission Expansion Plan. He noted that there is cause for concern about the EHV Overlay project, the STEP and transmission planning in general with the recent rejection of coal plants in Kansas and Oklahoma. Mr. Brown encouraged the RSC to help make the EHV Overlay a reality and to maintain its commitment to expand transmission. He stated that SPP appreciates the RSC's earlier work and approval of a cost allocation mechanism for reliability upgrades and encouraged the RSC to move post haste on the critical path toward a cost allocation plan for economic upgrades.

Business Meeting

2008 Budget Approval

Les Dillahunt presented the 2008 & 2009 RSC Budget for approval (2008 Budget – Attachment 4). The cost/benefit study is listed as a place holder as the Cost Benefit Task Force needs to define the scope and bid for any external resources deemed to be required. Following discussion, **Jeff Cloud moved to approve the 2008 RSC Budget of \$703,017 as presented. Paul Suskie seconded the motion, which passed unanimously.**

Cost Allocation Working Group Report

Dr. Mike Proctor provided the Cost Allocation Working Group report (CAWG Report – Attachment 5). Dr. Proctor provided background on the process of Base Plan Funded Projects, the cost allocation issue previously initiated by the RSC. This review was presented as background information due to the addition of four new commissioners on the RSC Board and due to Empire District's waiver request which might result in possible changes in the current cost allocation methodology for certain Base Plan Funded Projects.

Dr. Proctor noted that Empire requested a waiver on August 23, 2007 for the recovery of all cost exceeding the Safe Harbor Cost Limit for the Cloud County wind farm, pursuant to Attachment J of the SPP OATT. This request may require a general policy change and as a result a change in the SPP tariff for similar requests in the future. The CAWG is looking for alternatives to address the tariff issue. Empire supports an extension beyond the 120 day decision period to afford a better opportunity for discussion at the SPP's January cycle of meetings.

Jeff Davis expressed that with the recent rejection of coal plants, there is a need to work out wind projects. Jim Eckelberger, SPP Board Chairman, added that there is a need to build a robust transmission system and the SPP Board is very interested in moving forward.

Transmission Ownership/Construction Task Force (TOCTF) Report Overview

- Mel Perkins provided an overview of the Transmission Ownership/Construction Task Force activities (TOCTF Report – Attachment 6). The TOCTF was formed in April of 2007 to address the policy for allocation of rights and responsibilities associated with the ownership, construction, and operation of transmission upgrades. The TOCTF suggested that the group's term be

Regional State Committee
October 29, 2007

extended through January 2008 in order to provide greater specificity to the results of their recommendations.

Future Market Efforts

Carl Monroe provided a report on SPP's future market efforts. Mr. Monroe addressed two efforts (Future Market Efforts – Attachment 7):

- Balancing Authority Consolidation - The Balancing Authority (BA) consolidation was required by FERC in 2005 in conjunction with approving the 2004 RTO filing. SPP is required to study the feasibility of consolidating BA's and file a report within 15 months of the February 1, 2007 start of the EIS Market.
- Future Markets –The Market Working Group (MWG) offered the Cost Benefit Task Force three scenarios to include in the cost/benefit study to be undertaken:
 1. Day Ahead Market
 2. Ancillary Service Market
 3. Both

The CBTF working with the MWG will continue to move forward with the development of the project scope, a cost/benefit study and analysis that will be reported to the SPP and RSC.

2007 SPP Transmission Expansion Plan (STEP) and EHV Progress Reports

Les Dillahunty provided a presentation of 2007 STEP and EHV Overlay Study as well as the multi-colored Project Tracking Chart (Progress Reports & Project Tracking – Attachment 8). Mr. Dillahunty reported that 2007 STEP projects through 2017 amount to \$2.18B without recent commitments. The STEP addresses a 10 year plan focusing on reliability needs based on firm commitments; the EHV Overlay is a 20 year visionary blueprint for near term planning to incorporate into collaborative, inter-regional assessments; and the CAWG Economic Portfolio effort investigates economically beneficial projects within the SPP footprint.

Inter-Regional Cost Sharing and Siting Discussion

Dr. Proctor stated that he would continue to follow this issue with Midwest ISO but has nothing to report at this meeting.

Update on Organizational Metrics

Michael Desselle discussed the Organizational Metrics Task Force document previously distributed to members of several committees. Organizational Metrics have been developed with the help of Mark Rossi (Gestalt) to create a dashboard measuring 4 areas:

- Reliability and Market Performance Metrics
- Financial Metrics
- Learning and Growth Metrics
- Overall Performances

Mr. Desselle requested feedback from the Board of Directors, RSC, and the Market and Operations Policy Committee in the next three weeks. It is the OMTF's goal is to implement and track organizational metrics starting early in 2008.

SPP Regional Entity Trustees

President Parsley asked John Meyer, Chair of Regional Entity Trustees (RET), to provide an update of the group's activities. Mr. Meyer stated that the RET met on August 20 discussing: violation status, hearing procedures, the compliance monitoring and enforcement program, and the Delegation Agreement. On August 21, the group met with FERC staff regarding compliance and reliability. Topics discussed included: independence for RTO, staff size, situation awareness/reliability assessment and Standards Process oversight. FERC conditionally accepted the Regional Entity budgets for 2008 in an order on October 18.

NERC is performing an audit of the SPP Reliability Coordinator with participation of FERC on October 29-31. The

Regional State Committee
October 29, 2007

audit is supported by SERC with observation by the SPP Regional Entity. The results will not be available for several months. Notice was received on October 4 of an upcoming FERC compliance audit of both the RE and the RTO. This audit will review compliance of Bylaws, Delegation Agreement, Membership Agreement, RTO Tariff, and FERC orders. Every RE will be audited but SPP and New York ISO are the first to undergo this type of audit.

President Parsley thanked Mr. Meyer for his report and stated that in the future RET reports would be included on the agenda.

Resolutions

President Parsley presented a resolution for Ms. Sandy Hochstetter (APSC) and a resolution for Mr. Steve Gaw (MPSC) in appreciation of their past contributions to the Regional State Committee.

Scheduling of Next Regular Meeting, Special Meetings or Events:

President Parsley noted that the next regularly scheduled RSC meeting is in Austin, Texas on January 28, 2008.

With no further business, the meeting was adjourned.

Respectfully Submitted,

Les Dillahunty

AGENDA

ANNUAL MEETING *

Monday, October 29, 2007

1:00 pm- 5:00 pm

Doubletree Hotel at Warren Place

Tulsa, Oklahoma

1. CALL TO ORDER
2. PRELIMINARY MATTERS
 - a. Declaration of a quorum
 - b. Adoption of July 23 and October 11, 2007 Minutes
3. ELECTION OF OFFICERS
4. UPDATES
 - a. RSC Financial Report
 - b. Other RSC officer reports
 - c. FERC
 - d. SPP
5. BUSINESS MEETING
 - a. 2008 Budget Approval (ACTION ITEM) Les Dillahunty
 - b. CAWG Report.....Dr. Mike Proctor
 1. Empire District Electric Base Plan Project Waiver Request.
 2. Status of Development of an Alternative Approach to the Funding of Economic Upgrades
 - c. 2007 SPP Transmission Expansion Plan (Step) and EHV Progress Reports.....Les Dillahunty
 - d. Inter-Regional Cost Sharing and Siting Discussion.....Dr. Mike Proctor
 - e. Transmission Ownership/Construction Report Overview.....Mel Perkins
 - f. Update on Organizational Metrics.....Michael Desselle
 - g. Commissioners Hochstetter and Gaw Recognition.....Julie Parsley
6. SCHEDULING OF NEXT REGULAR MEETING, SPECIAL MEETINGS OR EVENTS
7. ADJOURNMENT

Southwest Power Pool, Inc.
 REGIONAL STATE COMMITTEE
 Doubletree Hotel at Warren Place, Tulsa, OK
 October 29, 2007

ATTENDANCE LIST

Name	System
MIKE PALMER	EDE
BARY WARREN	EDC
BOB KOENIG	OGE
Tim Woolly	SPS
JEFF KNOTTEK	CUSM
Phil CRISSUP	OG&E
RICK WALKER	THE WIND COALITION
Venita Mclellon-Athen	Swepco
Richard BOSS	AEP
WALT SHUMATE	ZET
DENNIS BETHEL	AEP
STUART SOLOMON	AEP (PSo)
HARRY SKILTON	SPP Director
Tom Layton	Occidental (Customer)
Mel PERKINS	OG&E
JOE DUDAR	ITC HOLDINGS
Carl Huslig	ITC Great Plains
Daniel Oginsky	ITC Holdings Corp.
JAM Loudenslager	ARKANSAS PSC
Bridget Headrick	Texas PUC

Southwest Power Pool, Inc.
 REGIONAL STATE COMMITTEE
 Doubletree Hotel at Warren Place, Tulsa, OK
 October 29, 2007

ATTENDANCE LIST

Name	System
Adrienne Brandt	PUCT
Joyce Davidson	OCC
Paul Sustie	Act PSC
Jeff Davis	MO PSC
Jeff Cloud	OCC
Julie Parsley	Tx PUC
MIKE MOFFET	Kansas Corp. Comm.
Mike Proctor	Missouri PSEC
Greg Meyer	Missouri PSC
Larry Hollaway	KCC
Jason T. Gray	KCC
JOSHUA MARTIN	SPP DIRECTOR
Rob Janssen	Redbud Energy
Jim Eckelberger	SPP Director
Nick Brown	SPP Staff
Phyllis Bernard	SPP Director
Mark Rossi	Gestalt
Michael Desselte	SPP
Les Dillahunty	SPP
Ed STONEBURG	TRANS-ELEC DEVELOPMENT



1000 Center St.

Little Rock, AR 72201

**Southwest Power Pool
REGIONAL STATE COMMITTEE**

Marriott Country Club Plaza, Kansas City, MO

July 23, 2007

• M I N U T E S •

Administrative Items:

Members in attendance or represented by proxy were:

Julie Parsley, Public Utility Commission of Texas (PUCT)
Sandra Hochstetter, Arkansas Public Service Commission (APSC)
Jeff Cloud, Oklahoma Corporation Commission (OCC)
Steve Gaw, Missouri Public Service Commission (MPSC)
David King, New Mexico Public Regulation Commission (NMPRC)
Mike Moffet, Kansas Corporation Commission (KCC)

There were 58 in attendance (Attendance – Attachment 1). Others in attendance via phone:

Tom DeBaun, Kansas Corporation Commission
Christine Ryan, East Texas Electric Cooperative
David Kays, Oklahoma Gas and Electric
Jim Useldinger, Kansas City Power and Light
Walter Wolf, Stone, Pigman, Walther, Wittman, LLC

President Parsley called the meeting to order at 1:05 p.m. Cheryl Robertson (SPP) called roll and a quorum was declared. President Parsley asked for adoption of the April 23, May 9 and June 28, 2007 meeting minutes (RSC Minutes 4/23/07, 5/9/07, 6/28/07 - Attachment 2). **Sandra Hochstetter moved to approve the April, May, and June minutes as presented. Mike Moffet seconded the motion. The minutes were approved by acclamation.**

Updates:

RSC Financial Report

Les Dillahunty (SPP) presented the RSC Financial Report (RSC Financial Report – Attachment 3). Mr. Dillahunty reported that the RSC remained under budget for 2007 mainly due to the fact that no cost/ benefit study had been initiated.

RSC 2006 Audit Review and Approval

Sandra Hochstetter provided a report of the RSC 2006 Audit. Ms. Hochstetter stated that Patricia Salman and Associates prepared the RSC 2006 tax return and the RSC Audit ending December 31, 2006. Two minor issues were pointed out in the audit: 1) inconsistency in the mileage rate for travel reimbursement and 2) missing receipts in which the RSC must show more diligence. Copies of the audit will be distributed to Mr. Dillahunty and the RSC members.

Ms. Hochstetter presented a resolution from Nick Brown to honor Denise Bode and Brian Moline for their past contributions and service to the Regional State Committee. Ms. Hochstetter moved and Julie Parsley seconded that RSC should join the SPP Board in presenting the resolution to Ms. Bode and Mr. Moline.

FERC Update

Regional State Committee
July 23, 2007

John Rogers provided an update on FERC activities:

- In May, the Commission approved NERC's proposal to assign Violation Risk Factors to its Reliability Standards. Violation Risk Factors will be used in the determination of monetary penalties for violations of Reliability Standards. (Docket Nos: RR07-9-000 and RR07-10-000)
- In June, the Commission issued an Advanced Notice of Proposed Rulemaking seeking public comment on potential reforms to improve operations in organized wholesale power markets. Based on the comments received at four technical conferences, the Commission made specific preliminary proposals in four areas regarding wholesale competition in RTO and ISO regions.
 - The role of demand response in organized markets
 - Increasing opportunities for long-term power contracts
 - Strengthening market monitoring
 - The responsiveness of RTOs and ISOs to customers and other stakeholders.
- In June, the Commission issued a final rule implementing reforms to its Market-Based Rates program. The reforms are intended to protect consumers from the exercise of market power. (Docket No. RM04-7-000)
- In July, the Commission issued a Notice of Proposed Rulemaking (NOPR) to codify cross-subsidy pricing restrictions on power and non-power goods and services transactions between franchised public utilities with captive customers and their market-regulated power sales affiliates or non-utility affiliates (RM07-15). Comments are due 30 days after publication in the Federal Register.
- The Commission issued two SPP orders related to the EIS market: 1) the Commission denied rehearing of its SPP Market Certification Order and 2) the Commission granted in part, a rehearing request of the Violation Relaxation Limit (VRL) Order in Docket No. ER07-319. In the VRL Order, the Commission instituted a paper hearing and directed SPP to provide additional information on its VRL's by July 30.

SPP Update

Nick Brown provided an update on SPP activities.

- SPP Regional Entity: Mr. Brown thanked everyone for their support in becoming a Regional Entity. On June 21 the Regional Entity Trustees were elected as follows: John Meyer (formerly with Reliant), Gerry Burrows (formerly with Kansas City Power & Light), and Dave Christiano (formerly with the City of Springfield). The group met on July 11 and elected John Meyer Chair of the group, ratified a budget, and hired Ron Ciesiel as Director of Compliance.
- SPP Board of Directors: The SPP Board of Directors (BOD) met in June for a development session. During that time, the BOD: attended the dedication of the new SPP Operation Center in Maumelle, AR; joined the staff for an outing to the ballpark; as well as heard many informative presentations.

The Board will review a recommendation tomorrow to raise the Administrative Fee Cap to 22.5¢/MWh. Thus far SPP has been able to operate under 20¢/MWh to cover SPP's operating and debt service costs but projections of future costs indicate that cost would exceed the current rate cap of 20¢/MWh as early as next year.

President Parsley commended SPP on a good job of selecting the Regional Entity Trustees and electing John Meyer to chair the group.

Business Meeting

RSC Orientation

President Parsley, Mike Proctor and Les Dillahunty conducted an orientation for the new members Jeff Cloud and Mike Moffet and returning member David King. Some of the RSC responsibilities explained were: cost allocation, overseeing cost benefits studies, consensus building between states, and monitoring other RTOs and ISOs. President Parsley explained that the RSC is made up of a representative from each state commission in the SPP footprint and officers include a President, Vice President, and a Secretary/Treasurer. The RSC will elect officers at its Annual Meeting in October.

Center of Excellence

Bill Wylie (SPP) provided a report on the Center of Excellence and its effort to facilitate Demand

Regional State Committee
July 23, 2007

Response/Energy Efficiency (DR/EE) initiatives (Attachment 4). The Strategic Planning Committee is looking for volunteers from the Membership to help conduct a DR/EE survey, educate Members as to benefits and barriers, conduct an analysis between wholesale and retail markets with regards to DR/EE, and do an analysis of performing future benefit/cost analyses.

Operational Services & Market Implications

Carl Monroe provided a report on operational services and market implications. Mr. Monroe stressed that the goal of SPP operations is reliability (Attachment 5). He addressed:

- Operating Criteria
- Planning/Operation Timeline
- Mechanisms for Reliability
- Basic Philosophy
- Transmission
- Market Working Group Work on Future Market Steps including a benefit/cost assessment

Empire District Electric Company Waiver Request

Dr. Proctor reported that the Empire District has requested a waiver for three OASIS requests pursuant to Section III of Attachment J of the SPP Tariff (Attachment 6). SPP staff recommended that the Empire waiver be approved based on a) the reservations are greater than 5 years, b) the resource to load is now less than 125% and c) the estimated E&C costs are less than the "Safe Harbor" limit. The MOPC did not feel a waiver was necessary at this time due to the resource to load ratio dropping below 125%. **Jeff Cloud moved to approve Empire District's waiver request should the SPP Boards of Directors deem it necessary. Mike Moffet seconded the motion, which passed unanimously.**

Summary of the CAWG's Economic Upgrade

Dr. Proctor provided an update on cost allocation proposals for economic upgrades (Attachment 7). Three proposals were presented from: 1) SPP staff, 2) Transmission Owners and 3) Transmission Customers. All three recommend a region wide postage stamp rate but differ in opinions regarding the transmission upgrade facilities that would be subject to this rate design. If CAWG is unable to put together a reasonably balanced portfolio of economic upgrades/projects, it may have to find something other than a postage stamp rate. Final positions will be presented to the RSC.

Golden Spread Transmission Planning Presentation

Bob O'Neil (Golden Spread Electric) provided a presentation regarding the need for effective long term backbone transmission planning (Attachment 8). He pointed out that his comments advocate a departure from current practices and that they were personal in that they do not reflect the position of any SPP Member.

Enhanced Regional Planning (ERP)/IRP Review

Project Tracking Report

Les Dillahunty provided a presentation which addressed Enhanced Regional Planning (ERP and how it relates to EHV Expansion (Attachment 9). Mr. Dillahunty pointed out that ERP is to consider three legs of planning: transmission, generation (Integrated Resource Planning -IRP), and load (Demand Side Management – DSM). He presented ERP considerations and EHV Overlay Study alternatives. The EHV Overlay alternative selected as a result of the study includes a 765 kV loop with extensions into MISO/PJM, and extensive integration of 500 kV systems in MO, AR, and TX between SPP and Entergy systems.

Scheduling of Next Regular Meeting, Special Meetings or Events:

President Parsley noted that the next regularly scheduled RSC meeting is in Tulsa on October 29. CAWG will continue RSC phone updates following the group's meetings.

With no further business, the meeting was adjourned.

Respectfully Submitted,

Les Dillahunty



1000 Center St.

Little Rock, AR 72201

**Southwest Power Pool
REGIONAL STATE COMMITTEE
August 24, 2007
Teleconference**

• M I N U T E S •

Administrative Items:

Members in attendance or represented by proxy were:

Mike Moffet, Kansas Corporation Commission
Steve Gaw, Missouri Public Service Commission
Sam Loudenslager, for Paul Suskie, Arkansas Public Service Commission

Others in attendance:

Tom DeBaun, Kansas Corporation Commission
Jason Gray, Kansas Corporation Commission
Larry Holloway, Kansas Corporation Commission
Walter Wolf, Stone, Pigman, Walther, Wittman, LLC
Adrienne Brandt, Public Utility Commission of Texas
Mike Proctor, Missouri Public Service Commission
Greg Meyer, Missouri Public Service Commission
Joyce Davidson, Oklahoma Corporation Commission
Harry Skilton, SPP Director
Bary Warren, Empire
Rob Janssen, Redbud
Walt Shumate, EEI
Tim Woolley, Xcel Energy
David Kays, Oklahoma Gas and Electric
Jake Langthorn, Oklahoma Gas and Electric
Carl Monroe, Southwest Power Pool
Les Dillahunty, Southwest Power Pool
Jay Caspary, Southwest Power Pool
Keith Tynes, Southwest Power Pool
Cheryl Robertson, Southwest Power Pool

Steve Gaw called the meeting to order at 9:10 a.m. Carl Monroe called roll and a quorum was declared.

Business Meeting:

Dr. Mike Proctor provided a report from the Cost Allocation Working Group (CAWG) meeting on July 25, 2007 (CAWG Report – Attachment 1). Topics included were:

- STEP Screen to Portfolio Transition
Charles Cates (SPP Staff) led a discussion regarding the 2006 STEP Screening process, stakeholder and SPP staff recommendations and the WFLR Process from the EHV Overlay Study. SPP has agreed to include in the screening process TLRs on flowgates and off-peak benefits.
- Integration vs. Off Ramp Facilities

Regional State Committee
August 24, 2007

Raj Rana (AEP) led a discussion regarding off ramp facilities versus integration facilities. The group decided that further discussion was needed regarding off ramp facilities where situations in which lower voltage upgrades are needed to bring benefit/cost ratio up to have the EHV project implemented.

- Aggregate Study Improvement Task Force Update
Jason Atwood provided an update on the Aggregate Study Improvement Task Force (ASITF). The Market and Operations Policy Committee (MOPC) directed that the ASITF present a report of potential Aggregate Study revisions prior to the October 16 MOPC meeting. The task force is made up of 7 members and 2 observers: 3 Transmission Owners; 3 Transmission Dependent Utilities; 1 Independent Power Producer; 1 FERC Staff; and 1 State Commission Staff. The group has agreed to remove the System Impact Study from the Aggregate Study process and has added the 15 day tariff required for execution of the study agreement in the 4 month open window or the transmission customer will be placed in the next Aggregate Study.
- Early Buy-In for Economic Upgrades
Dr. Mike Proctor led a discussion regarding buy-in for Economic Upgrades considering: the pre-approval process; the specification of the lower bound on the benefit to cost ratio under which a project is allowed to qualify for the portfolio; project cancellation; ongoing evaluation of approved projects; and risks associated with project cancellation. Dr. Proctor listed two action items for the August CAWG meeting:
 - Project completion costs compared to benefits, criteria for cancellation should be equivalent to benefit/cost criteria for inclusion of a project
 - Proposed modifications to postage stamp rate design for an unbalanced portfolio
- Topics for Next CAWG Meeting
Dr. Mike Proctor asked the RSC if modeling assumptions used for evaluation of an economic portfolio should match the modeling assumptions that go into the EHV project and asked for direction moving forward. Following discussion, the group decided that the CAWG should develop a list of key assumptions for the economic model, which hopefully will be consistent with the EHV project.

With no further business, the meeting was adjourned.

Respectfully Submitted,

Les Dillahunty



1000 Center St.

Little Rock, AR 72201

**Southwest Power Pool
REGIONAL STATE COMMITTEE
October 11, 2007
Teleconference**

• M I N U T E S •

Administrative Items:

Members in attendance or represented by proxy were:

Julie Parsley, Public Utility Commission of Texas
Jeff Davis, Missouri Public Service Commission
Mike Moffet, Kansas Corporation Commission

Others in attendance:

Patrick Clarey, FERC
John Rogers, FERC
Sam Loudenslager, Arkansas Public Service Commission
Tom DeBaun, Kansas Corporation Commission
Jason Gray, Kansas Corporation Commission
Larry Holloway, Kansas Corporation Commission
Walter Wolf, Stone, Pigman, Walther, Wittman, LLC
Adrienne Brandt, Public Utility Commission of Texas
Sarah Willard
Mike Proctor, Missouri Public Service Commission
Greg Meyer, Missouri Public Service Commission
Joyce Davidson, Oklahoma Corporation Commission
Bary Warren, Empire
David Kays, Oklahoma Gas and Electric
Philip Crissup, Oklahoma Gas and Electric
Raksha Krishna, EEI
Jason Atwood, Kelson Energy
Bernie Liu, Xcel Energy
Tom Payton, Oxy
Dennis Reed, Westar
Tom Stuchlik, Westar
Carl Monroe, Southwest Power Pool
Les Dillahunty, Southwest Power Pool
Cheryl Robertson, Southwest Power Pool

President Julie Parsley called the meeting to order at 12:05 p.m. President Parsley asked for introductions.

Business Meeting:

Dr. Mike Proctor provided a report from the Cost Allocation Working Group (CAWG) September meeting (CAWG Report – Attachment 1). Topics included were:

Empire District Electric Waiver

Dr. Proctor reported that the Empire District has submitted a waiver that would move the safe harbor level for upgrades required to deliver wind power as a designated resource from the current calculation of \$1.8

Regional State Committee
October 11, 2007

M based on 10 MW of accredited capacity to \$18 M based on 100 MW of requested transmission service based on the maximum output from the wind turbines. He pointed out that waiver requests are not meant to set precedent but specifically for special circumstances. In this case however, the RSC may want to consider the request as precedent setting and reconsider the tariff rules regarding renewables. Empire District has asked for a 45 day extension for a response from SPP. This would fall approximately in mid February allowing time for the January SPP Board meeting.

Benefit Calculations

Dr. Proctor provided an update on the benefit calculations including the PROMOD model. He stated that the original plan was to have a complete portfolio of projects by the end of 2007 but that it was the consensus to not rush and in the end have a more accurate product. Dr. Proctor listed key uncertainties identified as:

- Renewable Portfolio Standards
- Timing, location and types of new generation
- Exports
- CO2 legislation
- Demand Response, Energy Efficiency and Legacy Programs
- Fuel Prices

A survey will be distributed next week concerning perspectives on the values for these uncertainties. It was requested that the RSC Board be included in the survey distribution.

With no further business, the meeting was adjourned.

Respectfully Submitted,

Les Dillahunty

SOUTHWEST POWER POOL
REGIONAL STATE COMMITTEE
For the Nine Months Ending September 30, 2007
Budget vs. Actual
DRAFT

	YTD Actuals	YTD Budget	Variance	
Income				
Other Income	83,144	630,128	(546,984)	(A)
Total Income	83,144	630,128	(546,984)	
Expense				
Travel	45,703	73,503	(27,800)	
Meetings	33,720	52,500	(18,780)	
Administrative	484	1,125	(641)	
Outside Services	3,237	3,000	237	
Cost Benefit Studies	-	500,000	(500,000)	(B)
Total Expense	83,144	630,128	(546,984)	
Net Income (Loss)	-	-	-	

(A) YTD revenue is less than budget given that ytd expenses are less than budget.

(B) YTD study costs are less than budget as no studies have been conducted in 2007.

**SOUTHWEST POWER POOL
REGIONAL STATE COMMITTEE
2008 & 2009 ESTIMATED BUDGET**

	ESTIMATED FY BUDGET 2008	ESTIMATED FY BUDGET 2009	
Expense Category			
Travel			
RSC Board Meetings	\$44,000	\$45,320	
RSC Working Groups	\$22,000	\$22,660	
Total Travel	<u>\$66,000</u>	<u>\$67,980</u>	3% Increase
Meetings			
RSC Board Meetings	\$28,200	\$29,046	
RSC Working Groups	\$17,600	\$18,128	
RSC Teleconference	\$7,000	\$7,210	
Total Meetings	<u>\$52,800</u>	<u>\$54,384</u>	3% Increase
Administrative			
Annual Audit	\$1,050	\$1,082	
IRS - RSC Filing	\$500	\$515	
Other Administrative	\$1,000	\$1,030	
Total Administrative	<u>\$2,550</u>	<u>\$2,627</u>	3% Increase
Cost Benefit Study	<u>\$581,667</u>	<u>\$0</u>	
TOTAL EXPENSES	\$703,017	\$124,991	

**SPP REGIONAL STATE COMMITTEE
HISTORICAL EXPENSE DETAIL
TRAVEL AND ADMINISTRATIVE EXPENSE**

Expense	Jan-07	Feb-07	Mar-07	Apr-07	May-07	Jun-07	2007 YTD	Annualized*
Meeting Related Travel	\$4,598	\$2,841	\$8,874	\$3,527	\$5,389	\$6,809	\$32,038	\$65,998
Meeting Expense	\$6,879	\$15,158	\$0	\$3,601	\$0	\$0	\$25,638	\$52,814
Administrative Expense	\$0	\$0	\$31	\$69	(\$7)	\$235	\$328	\$676
Total Operating Expense	\$11,477	\$17,999	\$8,905	\$7,197	\$5,382	\$7,044	\$58,004	\$119,488

** This run rate analysis was used to determine the 2008 budget and includes a 3% growth rate*

Base Plan Funded Projects and Cost Allocation

SPP RSC Meeting
October 29, 2007
Mike Proctor

Purpose of Presentation

- With the question of Empire District Electric's waiver request and possible changes in cost allocation for Base Plan Funded Projects; and
- With four new Commissioners on the SPP RSC Board;
- This review is meant to provide background on the process of cost allocation that was previously initiated by the SPP RSC Board.

2

Base Plan Funded Projects

- What transmission upgrades qualify for Base Plan Funding?
 - Any reliability related transmission upgrade required by the SPP Transmission Expansion Plan (STEP)
 - Transmission upgrades resulting from requests for new or changed Designated Resource (DRs)

3

STEP Transmission Upgrades

- Any transmission upgrade required by SPP in its transmission expansion plan for meeting reliability conditions.
 - These reliability conditions must result from NERC requirements and SPP criteria.
 - Local transmission owner requirements that are stricter than SPP criteria resulting in upgrades go into zonal rates and are not Base Plan Funded.
 - These upgrades are typically the result of load growth that is different from initially expected when new or changed DRs were put in place.

4

New or Changed DRs

- As load grows and as contracts expire, utilities must build or find new generation resources to meet their planning reserve requirements.
- Designated Resources refer to generation resources that are used to meet both the capacity and energy requirements of load by the utilities.

5

Prior Cost Allocation

- Prior to the changes proposed by the SPP RSC, the cost of reliability upgrades were assigned to the local zone in which these upgrades were required; and
- Upgrades required for new or changed DRs were directly assigned to the utility making the request.

6

Base Plan Funding Cost Allocation

- If a transmission upgrade qualifies as a Base Plan Project, the cost of that upgrade are allocated as follows:
 - 1/3 go to a region-wide postage stamp rate
 - 2/3 are allocated to zones benefiting from the upgrade.

7

1/3 Region-Wide Postage Stamp Rate

- The annual revenue requirements from the transmission upgrade cost going to the region-wide postage stamp rate are divided by the sum of twelve-month coincident peak (CP) demands for all loads within the SPP to determine the rate.
- The rate is collected from each load-serving entity by multiplying that rate by that entities twelve-month CP demands.
- In essence, the costs are allocated to each utility on a load ratio share basis (i.e., in proportion to each utility's percent of 12 CP load).

8

2/3 Allocation to Zonal Rates

- Allocation is based on Sum of Positive MW-mile Impacts.
 - SPP runs the MW-mile calculation with and without the upgrade.
 - If MW-miles go down on transmission facilities after the upgrade, this is a positive MW-mile impact.
 - Any transmission facilities experiencing an increase in MW-miles after the upgrade are not netted against positive MW-mile impacts.

9

Restriction on New or Changed Designated Resources

- Contract must be for 5 years or longer.
- Capacity reserves cannot exceed 25%.
- Safe-Harbor Condition:
 - Costs qualifying for Base Plan Funding are limited to \$180,000/MW of accredited capacity of the DR.

10

Five Year Restriction

- The SPP RSC did not want to provide incentives for new transmission built that might only be of value for less than five years.

11

25% Reserve Margin

- The SPP RSC did not want incentives for what might be “energy” related replacements for existing capacity.
- Instead, the cost allocation was meant for projects that qualify as reliability needs.

12

Safe Harbor Condition

- The purpose was to put some restrictions on the dollar size of the upgrades and therefore on the distance between generator and load.
- The \$180,000/MW of accredited capacity was based on the average level of existing investment in transmission compared to generation megawatts in each zone.
- There is a commitment by the RSC and SPP to review the \$180,000 within a three year period.

13

Waivers from Restrictions

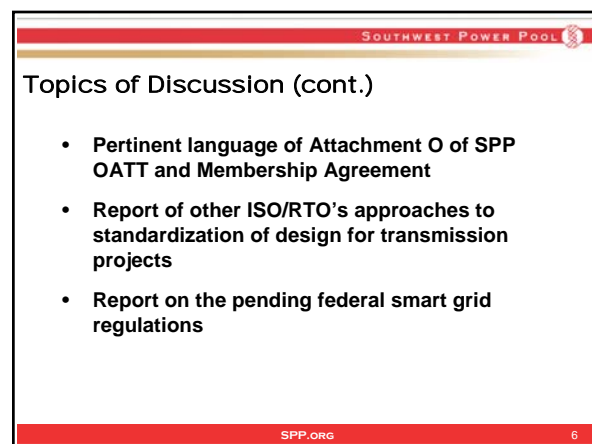
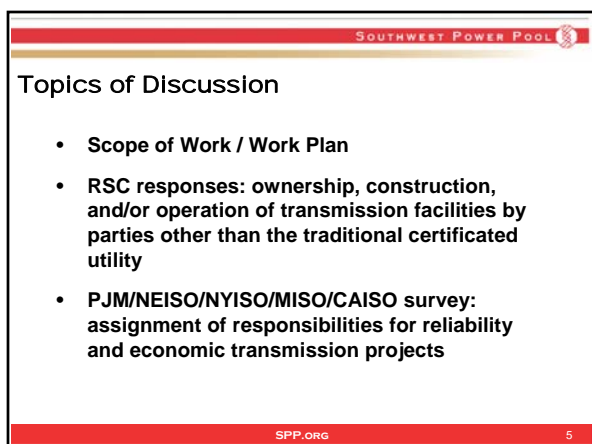
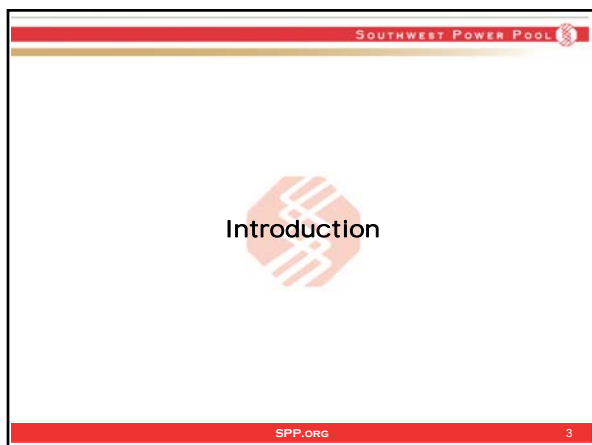
- Any transmission customer whose DR request does not meet any of the three restrictions is entitled to request a waiver.
- SPP staff make a recommendation on all waiver requests. This recommendation is reviewed by the Markets and Operations Policy Committee (MOPC), who then makes a recommendation to the SPP Board.
- In almost every waiver request, the MOPC has asked the SPP RSC to provide its opinion.

14

Past Waivers Granted

- All have been on the safe harbor condition
 - Increase the \$180,000/MW based on contracts being more than 5 years.
 - Allow a higher cost upgrade that would otherwise violate the safe harbor condition because it was a better regional solution.
 - Allow the \$180,000/MW to be applied in aggregate to all participants in the new generation plant rather than to each one.

15



SOUTHWEST POWER POOL

Topics of Discussion (cont.)

- This effort did not have critical infrastructure implications
- CapX2020 project
- MISO's effort regarding standardization of transmission ratings
- Transmission interconnections pursuant to the SPP OATT and the FPA

SPP.ORG 7

SOUTHWEST POWER POOL

Topics of Discussion (cont.)

- TOCTF developed several iterations of policy questions

SPP.ORG 8

SOUTHWEST POWER POOL



Current Policy Issues and Responses

SPP.ORG 9

SOUTHWEST POWER POOL

Questions and Consensus Opinions

- Does the current tariff language regarding the right of first refusal and the obligation to build apply only to reliability and/or transmission service requested upgrades or does this right extend to economic upgrades as well?
 - Section 3.3(c) of the existing Membership Agreement and Sections 4.0(b) and (c) of Attachment O of the SPP OATT do not differentiate between reliability and/or economic upgrades
 - Transmission owners' right of first refusal is applied to all approved transmission projects included in the SPP Transmission Expansion Plan (STEP)

SPP.ORG 10

SOUTHWEST POWER POOL

Questions and Consensus Opinions (cont.)

- Are SPP's rules governing assignment of project responsibility clear? Might SPP be asked to choose among multiple qualified entities for a specific project?
 - Language governing the assignment of project responsibility is clear
 - SPP might have to choose among multiple qualified entities for a specific project if:
 1. An existing Transmission Owner declines to exercise his right of first refusal; or
 2. The designated Transmission Owner does not or cannot agree to implement the project in a timely manner


SPP.ORG 11

SOUTHWEST POWER POOL

Questions and Consensus Opinions (cont.)

- Should there be an explicit obligation to build economic upgrades once they are approved?
 - Yes. SPP Board of Directors would direct that economic or requested projects that do no harm be built as a part of the STEP process
 - SPP would issue the necessary authorization to construct to the affected Transmission Owner(s) to initiate the Transmission Owner(s)' obligation
 - The TOCTF does not believe that an obligation to build transmission exists unless there is a cost recovery mechanism in place


SPP.ORG 12

SOUTHWEST POWER POOL 

Questions and Consensus Opinions (cont.)

- **Is there a need for broader definitions and usage of terms such as constructor, owner, and/or operator?**
 - No
- **Should the SPP governing documents be structured to require interconnection with new transmission?**
 - SPP's governing documents should be supplemented to address transmission interconnections in a manner as has been done with generator interconnections


SPP.ORG 13

SOUTHWEST POWER POOL 

Questions and Consensus Opinions (cont.)

- **Should SPP's governing documents be structured to:**
 - Provide guidance on standard rating or standard operating criteria?
 1. Criteria 12 has thus far been satisfactory, but may need to be revised
 2. TOCTF does not recommend specific construction standards due to:
 - A. Diversity in geography;
 - B. Design considerations; and
 - C. Standardization of equipment within specific operational area


SPP.ORG 14

SOUTHWEST POWER POOL 

Questions and Consensus Opinions (cont.)

- **Should SPP's governing documents be structured to:**
 - Encourage construction that allows maximum transfer capability?
 1. Yes, based upon comprehensive planning, cost allocation, and recovery processes
 - Provide guidance on standard design for "regional" transmission? (consistent with EHV plan)
 1. No


SPP.ORG 15

SOUTHWEST POWER POOL 

Questions and Consensus Opinions (cont.)

- **Does the TOCTF believe that the current language in the Membership Agreement and Tariff is sufficient to accommodate a new transmission owner?**
 - Yes
- **Does the TOCTF wish to continue to use the term "transmission owner" in connection with these economic upgrades?**
 - Yes


SPP.ORG 16


SOUTHWEST POWER POOL 

Questions and Consensus Opinions (cont.)

- **What statutory or regulatory barriers to this list of issues and questions posed by the TOCTF can or should be addressed?**
 - Any public utility, or a utility that may apply for and be granted the required certificate from its respective state commission, may:
 1. Construct or operate transmission facilities
 2. Exercise eminent domain rights
 - The TOCTF does not wish to alter SPP staff's role in terms of issue advocacy: this is a member function

SPP.ORG 17

SOUTHWEST POWER POOL 



Additional Questions

SPP.ORG 18

SOUTHWEST POWER POOL

Does the ROFR continue as in the SPP OATT?

- Current governing language does not preclude application to projects that have economic rather than reliability justification
- A segment of the TOCTF prefers to revisit this issue; opportunities on all or some segment may broaden

SPP.ORG 19

SOUTHWEST POWER POOL

Should there be a defined period for a TO to exercise their ROFR?

- Some specific period should be specified; i.e., 30, 60, or 90 days

Should there be a prescription of time for projects to be constructed?

- Governing documents should address situations where a TO is assigned a project that is delayed due to circumstances or with purpose

SPP.ORG 20

SOUTHWEST POWER POOL

Is this issue an ROFR matter or an “obligation to build”?

- Board-approved reliability and economic projects are obligations
- Obligation presupposes a cost recovery mechanism

SPP.ORG 21


SOUTHWEST POWER POOL

Should the ROFR extend to economic as well as reliability projects?

- What are the qualifications for non-TOs or TOs to build in areas outside their certified areas?
 - There are differing points of view regarding rights of first refusal
 - TOCTF effort highlighted differences but did not attempt to achieve consensus on specific recommendations for change
 - Criteria should be developed addressing the qualification of entities other than certificated area utilities to build transmission projects

SPP.ORG 22

SOUTHWEST POWER POOL



Conclusions

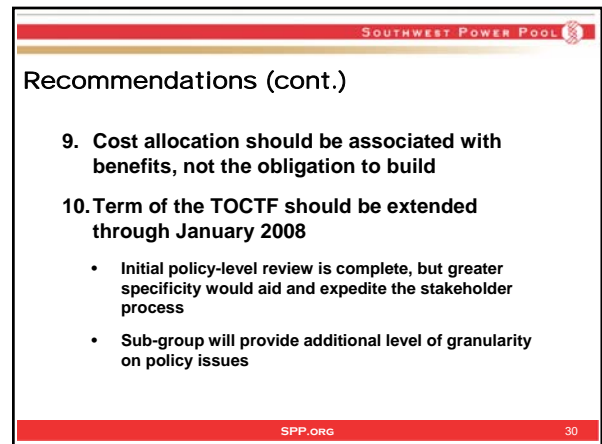
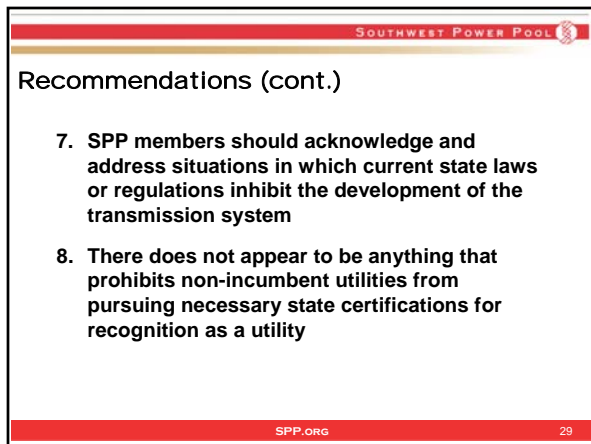
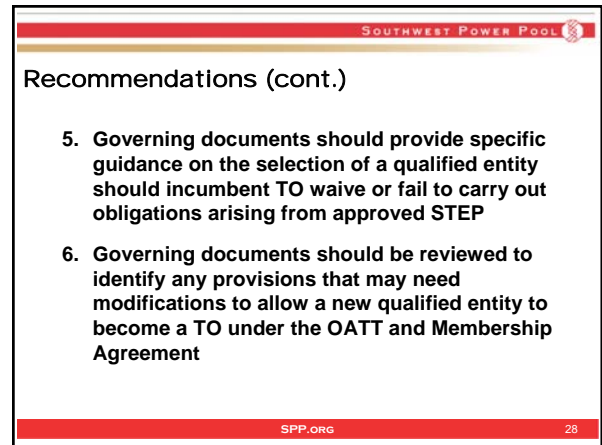
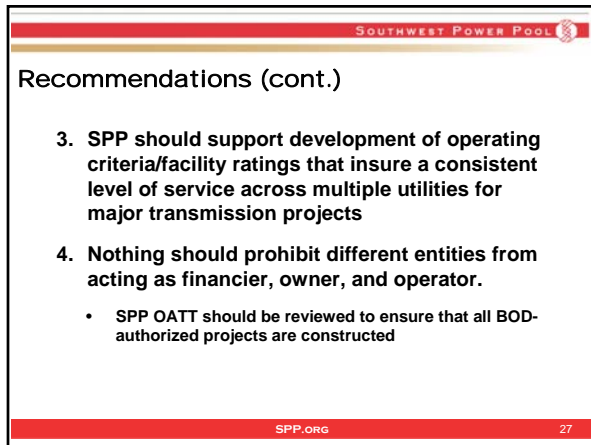
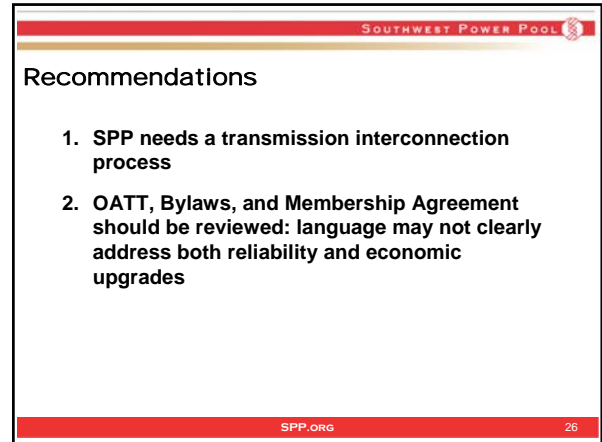
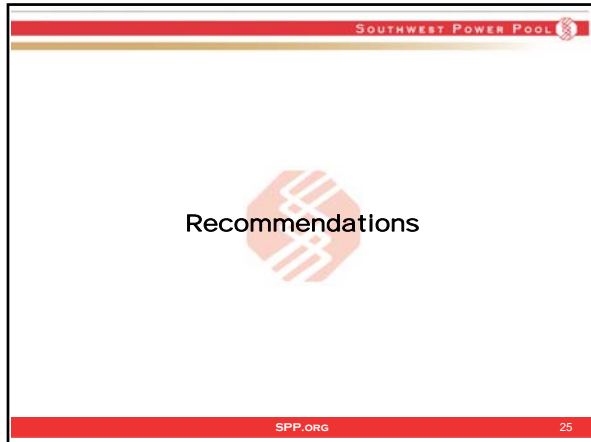
SPP.ORG 23

SOUTHWEST POWER POOL

Conclusions

- Completion of RSC effort to address cost allocation for economic upgrades is very important
- The STEP process cannot obligate parties to construct transmission upgrades without a presumption of cost recovery
- SPP must decide whether the present governing documents *accommodate* or *encourage* transmission expansion

SPP.ORG 24





**Report of the Transmission Ownership/Construction Task Force
to the Strategic Planning Committee
Southwest Power Pool, Inc.
October 18, 2007**

Ownership and Construction of Transmission Upgrades: Today and Tomorrow

INTRODUCTION

The Transmission Ownership/Construction Task Force (“TOCTF”) was approved for formation by the Southwest Power Pool, Inc. (“SPP”) Board of Directors on April 24, 2007 as a policy-level task force of the Strategic Planning Committee focused on addressing the following broad issues:

- A policy for the allocation of the rights and responsibilities associated with the ownership, construction and operation of transmission upgrades; and
- To consider a possible regional standardization of transmission design criteria.

These two areas became the focus of the TOCTF efforts due to the now realistic circumstance where parties other than the traditional state-certificated utility in the area where the transmission is to be built desire to provide either financing, ownership, operation, construction or some combination of these services. This is coupled with the possibility of regional standardization of transmission design criteria; i.e., construction standards (conductor size, structure design, equipment inventories, voltage levels) and facility ratings. The TOCTF Scope of Work is attached as **Exhibit A**.

During the course of the Task Force meetings and teleconferences, various subjects were discussed, including the following:

1. The details of a Scope of Work and a Work Plan.
2. A review of the RSC states submittals in response to a specific list of questions concerning ownership, construction and/or operation of transmission facilities by parties other than the traditional certificated utility. A summary of state responses is attached as **Exhibit B**.
3. A survey of PJM, NEISO, NYISO, MISO and the CAISO concerning the assignment of responsibilities for construction of reliability and economic transmission projects.
4. A review of the pertinent language of the SPP tariff, Attachment O and the Membership Agreement regarding transmission service and transmission construction. The pertinent language is attached as **Exhibit C**.
5. A review and report of other RTO’s/ISO’s approach to the standardization of design for transmission projects.

6. A report on the pending federal smart grid regulations was presented in terms of applicability to the TOCTF effort. The report is attached as **Exhibit D**.
7. The TOCTF determined that this effort did not have critical infrastructure implications.
8. The CapX2020 project, a joint initiative of transmission owning utilities in Minnesota, to construct four new major transmission projects to be placed in service between 2012-2014 at an estimated cost of \$2.3 billion was reviewed. The CapX2020 report is attached as **Exhibit E**.
9. An earlier MISO effort dealing with the standardization of transmission ratings was reviewed; however, that effort was unsuccessful due to concerns of responsibility for risks associated with the standardization.
10. Research was conducted and presented concerning transmission interconnections pursuant to the SPP OATT and the FPA. The powerpoint presentation resulting from the research is attached as **Exhibit F**.
11. The TOCTF developed, answered, modified and condensed several iterations of policy questions that the Task Force wished to address with the final list of questions summarized below.

CURRENT POLICY ISSUES AND RESPONSES

On September 21, 2007, the TOCTF convened in Dallas, Texas. On the agenda was a discussion of the following policy issues and responses received by SPP. The group discussed the questions and responses provided and developed a consensus of opinion on each issue. The questions and consensus opinions are set forth below.

I.A. Should the SPP governing documents, including the Tariff, be structured to expand or clarify these principles of transmission ownership?

Central to this issue are the following four sub-topics, addressed in turn.

[I.A.1.] Does the current tariff language regarding the right of first refusal and the obligation to build apply only to reliability and/or transmission service requested upgrades or does this right extend to economic upgrades as well?

Section 3.3(c) of the existing Membership Agreement and the Attachment O, Sections 4.0(b) and (c) of the SPP OATT, do not differentiate between reliability and/or economic upgrades. The transmission owners' right of first refusal is applied to all approved transmission projects included in the SPP Transmission Expansion Plan (STEP).

[I.A.2.] Are the SPP rules governing the assignment of project responsibility (reliability and economic upgrades) clear? Is there a possibility that SPP

would be asked to choose among multiple qualified entities for a specific project? If the answer is yes, then guidance must be provided.

Yes, the language governing the assignment of project responsibility is clear. And yes, there is the possibility that SPP would have to choose among multiple qualified entities for a specific project. That could occur in the following instances:

- (1) An existing Transmission Owner declines to exercise his right of first refusal; or
- (2) The designated Transmission Owner does not or cannot agree to implement the project in a timely manner.

For example, an existing Transmission Owner could decline his right of first refusal for reasons such as financial, engineering, manpower or political reasons.

Guidance offered. Both the Membership Agreement and the OATT direct that “SPP will solicit and evaluate proposals for the project from other entities and select a replacement”. The SPP governing documents do not provide the details to be followed should SPP be faced with assigning the responsibility to construct transmission if the incumbent Transmission Owner has waived or has not carried out the obligations of the approved STEP. There is no guidance in the governing documents as to the qualifications of the “replacement” in areas such as: planning, technical, operational, financial and construction experience. Obviously, SPP would be guided by principles of quality and cost effectiveness in this process, but those are subjective considerations.

[I.A.3.] Should there be an explicit obligation to build economic upgrades once they are approved?

Yes. The SPP Board of Directors would direct that these economic or requested projects that do no harm be built as a part of the STEP process, the Board action would cause SPP to issue the necessary authorization to construct to the affected Transmission Owner(s) and the Transmission Owner(s) obligation is initiated. The TOCTF does not believe that an obligation to build transmission exists unless there is a cost recovery mechanism in place.

[I.A.4.] Is there a need for broader definitions and usage of terms such as constructor, owner, and/or operator?

No.

B. Should the SPP governing documents, including the Tariff, be structured to require interconnection with new transmission?

The TOCTF recommends that the SPP governing documents be supplemented to address transmission interconnections in a manner as has been done with generator interconnections. The existing TWG Interconnect Review process has a narrow scope, reviewing new interconnections only on the basis of change to the impedance network. The current process does not intend to capture change in dispatch operations subsequent to new interconnection facilities. The process focuses on reliability impacts. The TOCTF did review the interconnection procedures that are employed within PJM and MISO. Section 202(b) of the FPA does authorize the Commission to require interconnections under certain conditions.

C. Should the SPP governing documents, including the Tariff, be structured to provide guidance on the standardization of ratings, operating criteria, design, rights of way, and etc., subject to reliability and economic justifications and the requirement that the project meets generally applicable conditions for cost recovery?

Sub-topics within this issue included:

[I.C.1.] Standard rating or standard operating criteria?

SPP 's Criteria 12, ELECTRICAL FACILITY RATINGS, addresses operating criteria, that have thus far been satisfactory; however these criteria may need to be revised in a differing transmission expansion environment. The TOCTF does not recommend specific construction standards due to the diversity in geography, design considerations and the standardization of equipment within a specific operational area.

[I.C.2.] Encourage construction that allows the maximum transfer capability (i.e. maximum conductor size, construct at a higher voltage and operate at a lower voltage, etc.)

Yes. SPP should always desire to “encourage construction that allows the maximum transfer capability” based upon a comprehensive planning process and an adequate cost allocation and recovery process.

[I.C.3.] Standard design for “regional” transmission? (e.g. consistent with EHV plan)

No. The TOCTF suggest that efforts toward standardization on specific future projects; i.e. portions of the EHV plan may be appropriate; but that general construction standards and details are not warranted.

II. Does the TOCTF believe that the current language in the Membership Agreement and Tariff is sufficient to accommodate a new transmission owner? Does the TOCTF wish to

continue to use the transmission owner term in connection with these economic upgrades or create another title?

Yes. The current language does accommodate a new Transmission Owner; however it is important to note the use of the term “Transmission Owner” within the governing documents.

There are two different defined terms for Transmission Ownership in SPP governing documents:

1. The term “Transmission Owner” is defined in Section 1.45a of the SPP Tariff and then again in Section 1.25 of the Membership Agreement.

SPP Tariff

1.45a Transmission Owner: Each member of SPP whose transmission facilities (in whole or in part) make up the Transmission System and has executed a membership agreement as a Transmission Owner. Those Transmission Owners that are not regulated by the Commission shall not become subject to Commission regulation by virtue of their status as Transmission Owners under this Tariff; provided, however, that service over their facilities classified as transmission and covered by the Tariff shall be subject to Commission regulation.

Membership Agreement

1.25 Transmission Owner

A signatory to this Agreement which transfers functional control related to the rates, terms and conditions of the OATT to SPP by executing this Agreement or appoints SPP under another agreement to provide service under the Transmission Tariff over Tariff Facilities which it owns or controls.

2. The term “Transmission Owning Member” is defined in Section 1.15 of the Bylaws.

Bylaws

1.15 Transmission Owning Member

A Member that has placed more than 500 miles of non-radial facilities operated at or above 60 kV under the independent administration of SPP for the provision of regional transmission service as set forth in the Membership Agreement.

The definitions of the term “Transmission Owner” in the SPP Tariff and Membership Agreement, although worded differently for the purposes of the documents in which they are defined, are complementary and consistent in intent. The term “Transmission Owning Member” as defined in the Bylaws is intended to be a specifically different term with a different definition for the purpose of establishing a threshold of ownership for voting purposes, while not disallowing consideration of transmission ownership under the SPP Tariff and Membership Agreement and the applicability of provisions of those documents. The TOCTF recommends that the governing documents be reviewed to identify whether there are any provisions that may need modification to allow a new, qualified entity to become a Transmission Owner under the OATT and Membership Agreement.

III. What statutory or regulatory barriers to this list of issues and questions posed by the TOCTF can or should be addressed?

The RSC states review of the specific responses to TOCTF questions mentioned above and attached as Exhibit B in conjunction with questions about transmission ownership and construction have been summarized as follows:

Responses were received from Arkansas, Texas, Kansas, Missouri and Oklahoma. In summary, the state responses are that any public utility or utility that may apply for and be granted the required certificate from the respective state commission may construct or operate transmission facilities and exercise eminent domain rights. Arkansas, in particular, requires that the electric utility requesting certification be organized for the purpose of generating, transmitting, distributing or supplying electricity to or for the public for compensation or public use.

The issue is not likely to arise before the Oklahoma Corporation Commission, as all territories are subscribed. However there is an overarching consensus that regulations trump in any circumstance.

The TOCTF does not wish to alter SPP's staff's role in terms of issue advocacy; believing that advocacy is a member function.

The TOCTF did not identify any specific regulatory or legal barriers specific to this assignment.

ADDITIONAL QUESTIONS

As the TOCTF neared the completion of this assignment this list of additional questions arose.

1. Does the ROFR continue as is in the SPP OATT?

The TOCTF did agree that the current governing language does not preclude application to projects that have an economic rather than a reliability justification. A segment of the TOCTF would prefer to revisit this issue, hoping for change that may broaden the opportunities on all or some segment; i.e., large-scale transmission projects.

2. Should there be a defined period for a TO to exercise their ROFR ?

TOCTF agrees that some specific period should be specified; i.e., 30, 60, or 90 days.

3. Should there be a prescription of time for projects to be constructed?

TOCTF agrees that a change to governing documents to avoid a situation where a Transmission Owner is assigned a project, but due to circumstances or with purpose, the

project is delayed or not commenced.

4. Is the issue a ROFR matter or an “obligation to build”?

TOCTF agrees that reliability or economic projects approved by the SPP Board of Directors are obligations. The obligation presupposes a cost recovery mechanism.

**5. Should the ROFR extend to economic as well as reliability projects?
What are the qualifications for non-TO’s or TO’s to build in areas outside their
certificated areas?**

The answer to this question is closely linked to Question 1 above and it is obvious that there are differing points of view regarding the rights of first refusal. The TOCTF effort highlighted the differences but did not attempt to achieve consensus on specific recommendations for change. Consensus will be difficult to achieve.

Criteria addressing the qualifications of entities other than the certificated area utility to build transmission projects should be developed.

CONCLUSIONS

- Completion of the Regional State Committee's effort to address cost allocation for economic upgrades is very important. The STEP process can not obligate parties to construct transmission upgrades without a presumption of cost recovery.
- SPP must decide whether the present governing documents **accommodate** or **encourage** transmission expansion.

The legacy language that exists in the SPP governing documents today was developed in an entirely different environment, one that did not recognize or anticipate the existence or evolution of economic upgrades, independent transmission companies, the EHV Overlay Plan, a Regional State Committee, costs assigned across the SPP footprint, KETA, 40,000 MW's of wind potential in remote areas, and large inter-regional power transfers. Today's language left unquestioned that the existing Transmission Owner had an obligation to build reliability upgrades. The SPP OATT language that is relevant to the Task Force's efforts is in the context of reliability projects without delineating economic projects.

Questions before us are numerous:

- Is there adequate assurance that a new Transmission Owner can be accommodated?
- To the extent that entities other than the existing Transmission Owner might be involved in the construction of transmission the roles of project sponsor, financier, owner and operator must be clarified.

- Have the right of first refusal issues raised in the FERC Attachment Z proceeding been adequately addressed. Attachment Z, along with a summary of the FERC actions with regard to the ROFR provision that was stricken from Attachment Z, is attached as **Exhibits G and H, respectively.**
- The SPP OATT language places SPP in the position of choosing among qualified entities under certain circumstances, but provides no specific guidance as to how to make that choice?

The current RSC/CAWG effort is focused on cost allocation, not on who will build and own transmission. Thorough planning, a clear process, cost recovery and cost allocation are critical to a robust transmission grid. In the future the SPP Board of Directors will address both reliability and economic upgrades, they will direct SPP to authorize for construction specific projects and that authorization to a Transmission Owner will obligate that Transmission Owner to place that project in service.

RECOMMENDATIONS

1. SPP does need a process for transmission interconnection as has been done for Generator Interconnections that go beyond the present Transmission Working Group (TWG) technical review to assess costs and impacts of the transmission interconnection.
2. The SPP OATT, Bylaws and Membership Agreement language may not be sufficient or provide enough clarity to address both reliability and economic upgrades and this area should be reviewed.
3. SPP should support the development of operating criteria/facility ratings that insure a consistent level of service across multiple utilities for major transmission projects. Operating criteria/facility ratings are distinct from construction standards.
4. While it is generally expected that the project financier, owner, and operator would be the same entity; there should be nothing that prohibits a differentiation, such that financial partners or joint ventures could occur. Additionally, the SPP OATT should be reviewed to ensure that all projects authorized by the SPP Board of Directors are constructed.
5. SPP's governing documents should be supplemented to provide specific guidance to direct the selection of a qualified entity should the incumbent Transmission Owner waive or not carry out obligations arising from the approved STEP.
6. The governing documents should be reviewed to identify whether there are any provisions that may need modification to allow a new, qualified entity to become a Transmission Owner under the OATT and Membership Agreement.
7. Should instances arise where current state laws or regulations inhibit the development of the transmission system; SPP members should raise and address these issues.

8. There does not appear to be anything that prohibits non-incumbent utilities from pursuing the necessary state certifications for recognition as a utility.

9. Cost allocation should be associated with benefits, not the obligation to build.

10. The TOCTF has completed its initial policy level review; however, before assigning responsibilities to specific working groups or task forces, greater specificity should aid and expedite the stakeholder process. To accomplish that goal, the TOCTF recommends that the term of the Task Force be extended through January 2008. A TOCTF sub-group comprised of Ricky Bittle (AECC), Charles Locke (KCPL), Pat Bourne (SPP) and Pam Kozlowski (Gestalt) will provide an additional level of granularity on these policy issues that will aid in the assignment of responsibilities. The sub-group will report to the TOCTF mid-term and again before the SPC's January 2008 meeting in order for a final report of the TOCTF to be made at that time.

EXHIBIT A

TOCTF Scope of Work

EXHIBIT B

Summary of States' Responses

EXHIBIT C

SPP Tariff, Attachment O and Pertinent
Membership Agreement provisions

EXHIBIT D

Report on the pending federal smart grid regulations

EXHIBIT E

CapX2020 Report

EXHIBIT F

Powerpoint Presentation on Transmission Interconnections

EXHIBIT G

Attachment Z

EXHIBIT H

Summary of FERC Actions on Attachment Z ROFR language



**Helping our members work together
to keep the lights on...
today & in the future**



Report of the Transmission
Ownership/Construction Task Force
(TOCTF) to the Strategic Planning
Committee (SPC)

October 2007



Introduction

Transmission Ownership/Construction Task Force (TOCTF)

- **Approved for formation on April 24, 2007**
- **Policy-level task force of the Strategic Planning Committee (SPC)**
 - **Addresses policy for allocation of rights and responsibilities associated with the ownership, construction, and operation of transmission upgrades**
 - **Considers possible regional standardization of transmission design criteria**

Topics of Discussion

- **Scope of Work / Work Plan**
- **RSC responses: ownership, construction, and/or operation of transmission facilities by parties other than the traditional certificated utility**
- **PJM/NEISO/NYISO/MISO/CAISO survey: assignment of responsibilities for reliability and economic transmission projects**

Topics of Discussion (cont.)

- **Pertinent language of Attachment O of SPP OATT and Membership Agreement**
- **Report of other ISO/RTO's approaches to standardization of design for transmission projects**
- **Report on the pending federal smart grid regulations**

Topics of Discussion (cont.)

- **This effort did not have critical infrastructure implications**
- **CapX2020 project**
- **MISO's effort regarding standardization of transmission ratings**
- **Transmission interconnections pursuant to the SPP OATT and the FPA**

Topics of Discussion (cont.)

- **TOCTF developed several iterations of policy questions**



Conclusions

Conclusions

- **Completion of RSC effort to address cost allocation for economic upgrades is very important**
- **The STEP process cannot obligate parties to construct transmission upgrades without a presumption of cost recovery**
- **SPP must decide whether the present governing documents *accommodate* or *encourage* transmission expansion**

Recommendations

Recommendations

- 1. SPP needs a transmission interconnection process**
- 2. OATT, Bylaws, and Membership Agreement should be reviewed: language may not clearly address both reliability and economic upgrades**

Recommendations (cont.)

- 3. SPP should support development of operating criteria/facility ratings that insure a consistent level of service across multiple utilities for major transmission projects**
- 4. Nothing should prohibit different entities from acting as financier, owner, and operator.**
 - SPP OATT should be reviewed to ensure that all BOD-authorized projects are constructed

Recommendations (cont.)

- 5. Governing documents should provide specific guidance on the selection of a qualified entity should incumbent TO waive or fail to carry out obligations arising from approved STEP**
- 6. Governing documents should be reviewed to identify any provisions that may need modifications to allow a new qualified entity to become a TO under the OATT and Membership Agreement**

Recommendations (cont.)

- 7. SPP members should acknowledge and address situations in which current state laws or regulations inhibit the development of the transmission system**
- 8. There does not appear to be anything that prohibits non-incumbent utilities from pursuing necessary state certifications for recognition as a utility**

Recommendations (cont.)

- 9. Cost allocation should be associated with benefits, not the obligation to build**
- 10. Term of the TOCTF should be extended through January 2008**
 - Initial policy-level review is complete, but greater specificity would aid and expedite the stakeholder process
 - Sub-group will provide additional level of granularity on policy issues



Mel Perkins
Vice President, Power Delivery
405-553-3225
perkinmh@oge.com



Balancing Authority Consolidation

Balancing Authority Consolidation

- **Previous considerations:**
 - 2001- The ORWG requested a study
 - 2005 – FERC required SPP to address BA consolidation in conjunction with approving the 2004 RTO filing.
- **Both studies determined that BA consolidation was feasible and potentially beneficial.**
 - Cost savings and benefits would occur
 - Difficult to quantify estimated savings and benefits
- **FERC requires SPP to study the feasibility of Consolidating BA's and file a report within 15 months of the February 1, 2007 start of the EI Market.**

BA Consolidation Study

- **Current feasibility study:**
 - Functional method of Consolidation
 - Range of Costs and Benefits expected
- **The proposed approach assumes SPP will be responsible for performing all BA tasks.**
- **Estimated Costs, Additional Annual - \$1,350,000, One Time (SPP - \$1,800,000, Current BA - \$600,000), Potential “throwaway” cost if future market steps - \$650,000**

Benefits of BA Consolidation

- **Benefits expected from BA Consolidation**
 - **Estimated Regulation reduction**
 1. 4 analyzed days
 2. 493 MWH to 1206 MWH per day reduction in UP regulation energy
 - \$3,800,000 to \$19,000,000 annually
 - Some Members estimate actual benefit will be ~10% of this amount.
- **Additional Benefits**
 - Facilitation of Future Market Steps
 - Transfer of Liability
 - Reduced Training and Certification Costs
 - Potential Staffing Reductions

Informal group of BAs Resolution

- “Estimated benefits are somewhat subjective, but appear to exist in terms of reduced burden on regulation due to inaccuracies in the market dispatch. Worst case, the relatively marginal system implementation cost of less than \$2M represents a full cost to the members for implementation with no immediate and measurable offsetting benefit.
- Balancing Authorities agree that BA **consolidation in advance** of the implementation of **future market phases would facilitate that implementation**. However, the BAs also believe that this intermediate step should be taken in conjunction with a commitment for some future market implementation of at least Ancillary Services, Day Ahead Unit Commitment and Day Ahead Energy Markets.
- BAs **agree** that the **work to further document** and develop the **detailed protocols and project implementation** should **begin in earnest**, so that the implementation of the project plan can begin immediately upon confirmation that further market steps will occur.”



Future Market Steps

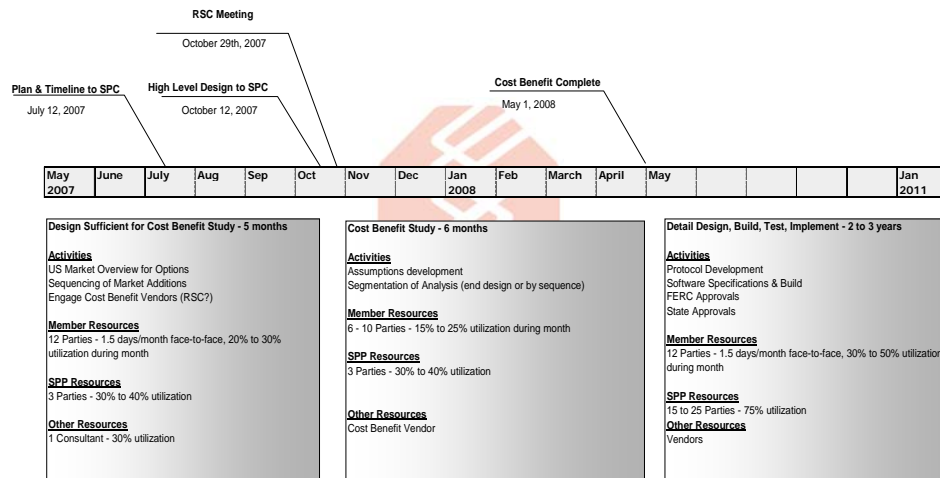
Long-term design of Resource products

- **Day-ahead Energy Market**
 - Security Constrained Unit Commitment & Includes Virtual Offers and Bids
- **Ancillary Services Market**
 - Co-optimized with energy market Day-ahead and Real-time.
- **Transmission Rights**
 - Built on current Transmission Reservation methodology (Physical Transmission Rights)
 - Incent short-term daily trading of the rights
- **Other**
 - Ability to trade energy responsibility through financial only schedules.
 - Support of hubs for trading energy.

Assumptions include current approved initiatives.

- **Consolidation of Balancing Authorities**
- **Market clearing (e.g. Ancillary Services) is across entire region.**
- **Transmission and Generation topology is the current STEP.**
- **Reserve sharing obligation is the LSE responsibility within the market footprint.**
- **Issue – ORWG needs to address if Ancillary Services will be handled on a Regional vs. Sub-regional basis**

SPP Future Market Timeline



The MWG identified issues/concerns for the further market development.

- **Incent transmission expansion.**
- **Alternative approaches to protect load from costs in a transmission scarce environment.**
- **Ability for demand response to participate.**
- **Ability of all Resources to participate in all Resource Products (e.g. Ancillary Services)**
- **Support changes in Resource diversity (e.g. intermittent resources)**

Scenarios are in addition to all inclusive for effective implementation of design.

- **Three Scenarios (Physical Rights Enhanced)**
 - Day Ahead Market
 - Ancillary Service Market
 - Both
- **Sensitivities:**
 - Virtual offers/bids
 - High wind/renewable Resource scenario
 - No Enhanced Physical Rights
 - FTRs
 - Incremental implementation

2007 STEP

Being finalized

- Transmission Summit August 15th
 1. focused on 100 kV +
 2. included sub-regional breakouts
- Western half of X Plan (345 kV) deferred until 2020 based on n-1 criteria but justified on economic benefits sooner
- Numerous opportunities identified based on Economic Upgrade screens
- Sub-regional 69 kV plans shared October 8th

Reflects EHV Overlay/Ozarks Study recommendations

- Flint Creek – Centerton – Osage Creek 345 kV in AR
 1. Centerton 345/161 kV in 2014
 2. Osage Creek 345/161 kV in 2016
- Brookline – Summit 345 kV in MO
 - Still studying alternatives

2007 STEP projects through 2017 amount to \$2.18B without recent commitments

Commitments for Spearville – Knoll – Axtell and Spearville – Comanche Co – Wichita EHV projects to MOPC/RSC/BOD in October

- Build out of Comanche Co – Wichita at 765 kV recommended in original EHV Overlay Study

STEP vs EHV Overlay

STEP – 10 year independent assessment focusing primarily on reliability needs based on firm commitments, and identifies potentially beneficial economic expansion projects

EHV Overlay – 20+ year visionary blueprint to shape near term planning and incorporate into collaborative, inter-regional assessments

CAWG Economic Portfolio – investigates economically beneficial projects within SPP to shape efficient grid expansion and associated cost recovery

Illustrative EHV Gantt Chart
Not Reviewed with Stakeholders
For Discussion Only



EHV Overlay Next Steps

- Stakeholders to share strategic plans (Ongoing)
- Stakeholders rank pending federal initiatives, e.g., RPS (survey in development, completed Nov 15)
- Conclude EHV conceptual design (Dec)
- Perform benefits analysis of design (Jan)
- Conduct state-by-state road shows (Feb-Apr)
- Seams Agreements and cost allocations (Oct – Apr)

EHV Overlay Presentations

- Shared with over 1,000 stakeholders to date
- Several national transmission planning conferences
- SPP regulators/legislative groups, e.g., FERC technical conferences and staff briefings, PUCT, KETA, OEPTTF, etc.
- Industry forums, e.g., EPRI, OSU Frontiers of Power, NERC Long Term Reliability Assessment Workshop, ERCOT RPG, etc.
- Numerous wind conferences, e.g., UWIG, NWCC, Wind Energy Conference, etc.

SPP 4th Quarter 2007 Project Tracking Report

Executive Summary

1.No upgrades classified as (RED) in this summary.

#2. To date in 2007, SPP project owners have completed 125 miles of new or upgraded transmission and related equipment representing an investment of \$116 million.

#3.14 upgrades have been completed this quarter. \$ 7 million in transmission lines and facilities were added from Richards - Piedmont and ReinMiller - Tipton Ford.

#4. SPP is tracking the development of 70 upgrades currently requiring mitigation plans (YELLOW).

Blue	Complete.
Green	On Schedule.
Yellow	Behind schedule, interim mitigation provided or project may change but time permits the implementation of project.
Red	Delayed beyond the RTO Determined need date and no mitigation plan provided.

SPP Area	Project Name	In-Service Date	RTO Reliability Need Date	Cost Estimate	Project Lead Time	Projec Status	Project Status Comments
Year 2006				\$81,169,724			
515	XFR - Norfork 161/69 kV	09/01/06	06/01/06	\$1,300,000			
520	Line - Okmulgee - Weleetka 138 kV Ckt 1	04/01/06	04/01/06	\$84,000			
520	Line - East Central Henryetta - Okmulgee 138kV	04/01/06	04/01/06	\$180,000			
520	Line - Rock Hill - Carthage REC 138 kV	06/01/06	06/01/05	\$4,370,000			
520	Line - Tontitown - Elm Springs REC 161 kV	05/01/06	05/01/07	\$640,000			
520	Line - Carthage REC - Carthage T 138 kV	06/01/06	06/01/07	\$1,590,000			
520	Line - Lone Star South - Pittsburg 138 kV	06/01/06	06/01/06	\$50,000			
520	Line - Finney Tap - Port Robson 69kV	12/31/06	12/31/06	\$6,230,000			
520	Line - Pittsburg - Winnsboro 138 kV	09/01/06	06/01/04	\$18,220,000			
524	Line - Cottonwood Creek - Skyline 138 kV Ckt 1	06/30/06	06/30/06	\$154,603			
524	Line - Redbud - Arcadia	05/15/06	05/15/06	\$1,609,082			
524	Line - Reno - Sunny Lane 69 kV	06/01/06	06/01/06	\$67,511			
524	Line - Van Buren AVEC - VBI 69 kV	06/01/06	06/01/06	\$107,114			
524	Line - Brown - Explorer Tap 138 kV Ckt 1	06/01/06	06/01/06	\$31,518			
524	Line - Richards Tap - Richards 138 kV	06/01/06	06/01/06	\$2,760,215			
524	Line - Bristow - Keystone West 138 kV	01/01/06	01/01/06	\$554,254			
524	Line - Tarby - Breaker Failure	08/31/06	08/31/06	\$1,136,503			
524	Line - Woodward District - Iodine 138 kV	12/01/06	06/01/04	\$7,870,364			
524	Line - NE Enid - Glenwood 138 kV	12/31/06	12/31/06	\$3,882,549			
526	XFR - Denver City 115/69 kV	12/01/06	06/01/06	\$2,670,460			
526		12/01/06	06/01/06				
536	Line - Cities Service - 3rd & VanBuren 69 kV Rebuild	03/01/06	06/01/06	\$1,700,000			
536	Line - Circle - Hutchinson Energy Center 115 kV Rebuild	03/29/06	06/01/06	\$300,000			
536	Line - Midwest Solvent Junction 1 - Atchison Junction 2 69 kV Rebuild	05/18/06	06/01/06	\$55,026			
536	XFR - Butler 138/69 kV #2 Addition	03/31/06	11/01/06	\$1,621,593			
536	Line - Morris - McDowell 230 kV Conversion	09/22/06	06/01/06	\$7,073,312			
536	XFR - McDowell 230/115 kV #1 Addition	07/19/06	06/01/06				
536	Multi - HEC - 43rd & Lorraine - Tower 33 69 kV Rebuild	12/31/06	12/31/06	\$2,400,000			
536		11/22/06	12/31/06				
536	Line - Chisholm - Grant 69 kV Rebuild	12/31/06	06/01/09	\$664,074			
540	Line - Gravois Mills - North Warsaw 161 kV	01/01/06	01/01/06	\$500,000			
540	Line - Truman - North Warsaw 161 kV	01/02/06	01/02/06	\$500,000			
541	Line - Lacygne - West Gardner 345 kV Ckt	05/01/06	05/01/06	\$10,461,346			
541	Line - Tomahawk - Bendix 161 kV	12/01/06	12/01/06	\$528,600			
544	Line - Sub 110 - Oronogo Jct. - Sub 432 - Joplin Oakland North 161 kV Ckt	05/01/06	03/01/06	\$504,000			
544	Line - Sub 109 - Atlas Jct. - Sub 432 - Joplin Oakland North 69 kV Ckt	05/01/06	06/01/06	\$1,353,600			
Year 2007				\$206,468,394			
502	Line - Pineville - Shady Oaks 138 kV	12/01/07	06/01/09	\$1,900,000			
515	Line - SPA Hilltop - EES Hilltop 161 kV	07/30/07	07/30/07	\$8,600,000			
515	Line - Springfield - Brookline 161 kV	06/01/07	06/01/08	\$390,000			
515	Line - Sub 109 - Atlas Jct. - Carthage 161 kV	05/01/07	06/01/07	\$88,000			
520	Line - 36th & Lewis - 52nd & Delaware Tap	06/01/07	06/01/16	\$15,000			
520	Line - Winnsboro - North Minneola 138 kV	12/01/07	12/01/07	\$20,770,000			

Southwest Power Pool
Project Tracking Report

SPP Area	Project Name	In-Service Date	RTO Reliability Need Date	Cost Estimate	Project Lead Time	Project Status	Project Status Comments
520	Line - South Shreveport - SW Shreveport 138 kV	07/04/07	06/01/10	\$110,000			
520	XFR - Southwest Shreveport Transformer Ckt 1 345/161 kV	01/01/09	06/01/10	\$1,500,000			
520	XFR - Southwest Shreveport Transformer Ckt 2 345/161 kV	01/01/09	06/01/10	\$1,500,000			
520	XFR - Tontitown 345/161 kV	06/01/07	06/01/07	\$4,278,100			
520	Line - Siloam Springs - Chambers Spring 161 kV	06/01/07	06/01/07	\$6,627,225			
520	Line - Knox Lee - Oak Hill #2 138 kV	07/11/07	06/01/07	\$135,000			
520	Line - Chambers Spring- Tontitown 161 kV	06/01/07	06/01/07	\$4,000,000			
520	Line - 53rd & Garnett N. Tap - Tulsa Southeast 138 kV	06/01/07	06/01/07	\$63,000			
520	Multi - Tulsa Project	07/01/07	06/01/07	\$58,710,000			
520		07/01/07	06/01/07				
520		07/01/07	06/01/07				
520		07/01/07	06/01/07				
520		07/01/07	06/01/07				
520		07/01/07	06/01/07				
520		07/01/07	06/01/07				
520		07/01/07	06/01/07				
520		07/01/07	06/01/07				
520		07/01/07	06/01/07				
520		07/01/07	06/01/07				
520		07/01/07	06/01/07				
520		07/01/07	06/01/07				
520	Line - Oak Hill - NW Henderson 138 kV	07/13/07	06/01/08	\$122,000			
523	Line - Zena Tap - Jay 69 kV	05/30/07	05/30/07	\$500,000			Facilities owned by Oklahoma Rural Elec. Coop.
523	Line - Gray Tap - Zena Tap 69 kV	05/30/07	05/30/07	\$1,600,000			Facilities owned by Oklahoma Rural Elec. Coop.
523	Line - Kerr - 412 Sub 161 kV	06/07/07	06/01/13	\$4,991,590			
523	XFR - Stilwell City 161/69 kV	06/01/07	06/01/07	\$2,200,000			
524	Line - Stillwater - McElroy 138 kV	05/31/08	05/31/08	\$933,542			
524	Line - Tecumseh - 69 kV Ckt	11/30/07	11/30/07	\$540,855			
524	Line - Dewey - 138 kV Ckt	06/01/07	06/01/07	\$1,428,565			
524	Line - Maud - 138 kV Ckt	12/31/07	12/31/07	\$359,964			
524	Line - Chitwood - Garber 138 kV	05/31/09	05/31/09	\$4,556,165			
524	Line - Russett - Springdale 138 kV Ckt 1	06/01/07	06/01/07	\$22,000			
524	Line - Vbi - 161 kV Ckt	12/31/07	12/31/07	\$128,460			
524	Line - 3rd St (Motorize Switches)	11/30/07	11/30/07	\$165,439			
524	Line - Ft. Smith (Motorize Switches)	12/31/07	12/31/07	\$105,852			
524	Line - Richards - Piedmont 138 kV	12/31/07	12/31/07	\$3,800,000			
524	Line - Stillwater - Morrison 138 kV	10/31/07	06/30/07	\$2,987,338			Project delayed to 10/31/07 due to scheduling & line clearance availability.Curtail generation at Sooner Power Plant as a mitigation plan
524	Line - Wind Farm - Mooreland 138 kV	06/01/07	06/01/07	\$120,000			
524	Line - Osage - 138 kV Ckt	11/15/07	11/15/07	\$149,230			
524	XFR - KNOBHILL 138 to KNOBHILL 69	12/12/07	06/01/08	\$1,834,568			
524	Line - Igo - 161 kV Ckt	12/31/07	12/31/07	\$2,832,404			
524	Line - Igo - Razorback 69 kV	12/31/07	06/01/10	\$4,500,000			
524	Line - Oakgrove - 69 kV Ckt	12/31/07	12/31/07	\$312,570			
524	Line - Razorback - Short Mountain 69 kV	12/31/07	12/31/06	\$9,600,000			The Razorback - Short Mountain line is being built because of a distribution loading problems in that area and the mitigation is being handled with adjacent distribution circuits for the present time. The Razorback - Short Mountain is not being built because of a transmission problem.
525	Line - Sleeping Bear/Fort Supply	04/01/07	02/01/07	\$2,080,000			
525	Line - Windfarm - Mooreland 138 kV	08/01/07	06/01/07	\$750,000			
525	Line - Elmore - Wallville 69 kV	12/01/07	12/01/07	\$1,488,000			
526	XFR - Mustang Station N. 115 kV - Mustang Station 230 kV	06/22/07	06/01/08	\$3,000,000			
526	XFR - Artesia 115/69 kV	-	06/01/07	\$2,750,000			Needs 69 kV study - new load in area. Study currently underway. Autos ok until 2017 w/switching
526	-	-	06/01/07	-			
526	XFR - Bailey Co 115/69 kV	04/01/07	06/01/06	\$2,476,344			
526	-	04/02/07	06/01/06	-			
526	XFR - Terry Co 115/69 kV	12/31/07	06/01/07	\$2,375,000			
526	-	12/31/07	06/01/07	-			
526	XFR - Hockley 115/69 kV	05/01/08	06/01/06	\$2,062,000			
526	-	05/01/08	06/01/06	-			
526	XFR - Curry County Interchange 69 kV - Curry County Interchange 115 kV	06/01/10	06/01/07	\$1,000,000			
526	-	-	06/01/07	-			
526	XFR - Gaines County Interchange 69 kV - Gaines County Interchange 115 kV	-	06/01/07	\$2,750,000			Studies will be conducted to further analyze 69 kV system - alternate solution will likely alleviate overload.
526	-	-	06/01/07	-			
526	XFR - Roswell Interchange 115 kV - Roswell Interchange 69 kV	12/01/07	06/01/10	\$1,375,000			Studies will be conducted to further analyze 69 kV system - alternate solution will likely alleviate overload.

Southwest Power Pool
Project Tracking Report

SPP Area	Project Name	In-Service Date	RTO Reliability Need Date	Cost Estimate	Project Lead Time	Project Status	Project Status Comments
531	XFR - South Hays 230/115	10/01/07	10/01/07	\$2,000,000			
531	Line - Knoll 115 - S Hays 115/230 Conversion	10/01/07	10/01/07	\$3,525,000			
531	Line - Mullergren - S Hays 115/230 Conversion	10/01/07	06/01/07	\$1,310,000	6 months		
536	Line - Hesston - Golden Plain - Gatz 69 kV Rebuild	12/31/07	06/01/07	\$2,032,500			Mitigation not required if Project completed before 08 Summer Peak. LOA received by Westar 2 February 2007 with required date 1 June 2007
536	Line - Hesston - Golden Plain - Gatz 69 kV Rebuild	12/31/07	06/01/07				Mitigation not required if Project completed before 08 Summer Peak. LOA received by Westar 2 February 2007 with required date 1 June 2007
536	Line - HTI Junction - Circleville 115 kV Rebuild	10/15/07	06/01/07	\$3,365,000			Mitigation not required if Project completed before 08 Summer Peak. LOA received by Westar 2 February 2007 with required date 1 June 2007
536	XFR - Swissvale 345/230 kV #2 Addition	12/31/2007	10/1/2007	\$5,600,000			
539	Line - Greensburg - Judson Large 115 kV Ckt 1	06/01/07	06/01/07	\$148,000	4-6 months		
539	Line - Sun City - Medicine Lodge 115 kV			\$167,500			06/05/2007 - notification to proceed, 07/05/2007 - major material has been quoted and is on order, 12/20/2007 - expected delivery of long lead time material, 02/01/2008 - installation complete at both locations
540	Line - St.Joseph-Cooper 345 kV	06/07/07	06/01/07	\$125,000			
540	Line - St.Joseph-Fairport 345 kV	06/01/07	06/01/07	\$125,000			
540	Line - Martin City - Turner Road 161 kV	06/30/07	06/01/07	\$47,683			
540	Line - Lake Road to Industrial Park 161 kV	06/01/07	06/01/07	\$10,000	8- months		
540	Line - Nevada 161 - Nevada Plant 69 kV	10/01/07	10/01/06	\$536,000			
540	Line - Craig Interconnection	07/01/07	06/01/06	\$75,000			
540	Multi - Loma Vista 161kV - Montrose 161kV (North Raymore 161kV Substation)	08/15/07	10/15/07	\$4,080,500			In service date is postponed to 10/15/2007. This is a distribution sub tap in transmission line. There is no impact on transmission reliability even it is postponed.
541	Line - Stilwell - Antioch 161 kV	05/25/07	06/01/07	\$963,000			
541	Multi - Pleasant Valley Sub	06/01/08	10/01/07	\$2,360,000	6 months		local reliability project, need for substation delayed to 2008, mitigation not needed
541	Multi - Pleasant Valley Sub	06/01/08	10/01/07				local reliability project, need for substation delayed to 2008, mitigation not needed
544	XFR - Sub 167 - Riverton 161/69 kV Ckt	06/22/07	06/01/07				
544	Line - Neosho - Sub 292 - Tipton Ford 161 kV Ckt	07/01/07	06/01/07	\$2,200,000			
544	Line - ReinMiller - Tipton Ford 161 kV	08/18/07	06/01/07	\$3,215,000			
Year 2008				\$262,442,385			
515	Line - Springfield - Brookline 161 kV	06/01/08	06/01/08	\$300,000			
515	XFR - NIXA 161/69	06/01/08	06/01/08	\$1,500,000			
515	Line - Brown - Brown 138kV	06/01/08	06/01/08	\$50,000			
520	Line - Snyder - Altus Junction 138 kV Ckt 1	06/01/08	06/01/13	\$16,760,000			
520	Multi - Fayetteville 69 kV conversion	06/01/08	06/01/08	\$21,000,000			
520		06/01/08	06/01/08				
520		06/01/08	06/01/08				
520		06/01/08	06/01/08				
520	Multi - Wallace Lake - Port Robson - RedPoint 138 kV	06/01/08	06/01/14	\$4,200,000			
520	Multi - Wallace Lake - Port Robson - RedPoint 138 kV	06/01/10	06/01/14	\$7,000,000			
520	Multi - Wallace Lake - Port Robson - RedPoint 138 kV	06/01/10	06/01/14	\$9,800,000			
520	Multi - Wallace Lake - Port Robson - RedPoint 138 kV	06/01/10	06/01/14	\$3,000,000			
520	Line - Northwest Texarkana-Bann T - Bann 138kV	06/01/08	06/01/08	\$25,000			
520	Line - Northwest Texarkana - Alumax Tap	06/01/08	06/01/07	\$2,160,000			On schedule for 6/1/08. SPP approved mitigation plan on 5/24/07.
520	Line - Alumax Tap - Bann	06/01/08	06/01/09	\$1,180,000			
520	Line - Chambers Spring - Tontitown 345 kV	05/01/08	06/01/07	\$14,405,000			Mitigation not required if Project completed before 08 Summer Peak.
520	Line - Elk City - Elk City 69 kV	06/01/08	06/01/07	\$100,000			On schedule for 6/1/08. SPP approved mitigation plan on 6/12/07.
520	Line - Bann - Kings Highway 69 kV	06/01/08	06/01/08	\$50,000			
520	Line - Cache - Snyder 138kV	06/01/08	06/01/08	\$73,348			
520	Line - Linwood to McWillie Street Rebuild	06/01/08	06/01/08	\$1,100,000			
520	Line - Ben Wheeler - Barton's Chapel (Rayburn) 138 kV Ckt 1	06/01/08	06/01/08	-			Rayburn Country Project
523	Line - 412 Sub - Kansas Tap 161 kV	06/08/08	06/01/13	\$2,971,180			
524	Multi - Earlywine	12/31/08	06/01/08	\$12,900,000			
524	Multi - Earlywine	12/31/08	06/01/08				
524	Multi - Earlywine	12/31/08	06/01/08				
524	Multi - Earlywine	12/31/08	06/01/08				
524	Line - Westmoore - Pennsylvania 138 kV	12/30/08	10/01/09	\$250,000			
524	Multi - Riverside - Pecan Creek - Muskogee 345 kV	06/01/08	06/01/08	\$7,226,027			
524	Multi - Riverside - Pecan Creek - Muskogee 345 kV	06/01/08	06/01/08				
524	XFR - Pecan Creek 345/161/13.8 kV	06/01/08	06/01/15				
525	Line - Hamon Butler - Morewood 69 kV	06/01/08	06/01/08	\$3,400,000	8- months		
525	Line - Sayre - Morewood 138 kV	06/01/08	06/01/08	\$12,000,000			
525	Line - Bradley - Rush Springs 69 kV	06/01/08	12/01/07	\$1,656,000	8- months		Shed load at Bradley Substation (up to 5MW in 2007 Summer Peak). MW values mentioned are typical for a Summer Peak case. Mitigation Plan yet to be reviewed by SPP

Southwest Power Pool
Project Tracking Report

SPP Area	Project Name	In-Service Date	RTO Reliability Need Date	Cost Estimate	Project Lead Time	Projec Status	Project Status Comments
525	Line - ACME - W Norman 69 kV	06/01/08	06/01/07	\$912,000	8- months		Open line from ACME to West Norman, West Norman supplied from Franklin SW.Mitigation Plan yet to be reviewed by SPP
525	XFR - Ft Supply 70 MVA	06/01/08	06/01/08	\$2,000,000	18- months		
526	Line - Amarillo South - Springdraw 115 kV	05/01/08	12/31/07	\$5,713,560			
526	Line - Cox - Floyd 115 kV	06/01/08	06/01/10	\$9,898,838			
526	XFR - Kress 115/69 kV	04/01/08	06/01/07	\$1,250,000			
526	XFR - Tuco Interchange 230/115 kV Ckt 2	06/01/08	06/01/08	\$7,978,726			
526	XFR - Nichols 230/115 kV	12/01/08	06/01/11	\$6,000,000			
526	XFR - Hale Co 115/69 kV	06/01/08	06/01/07	\$2,900,000			
526	XFR - Carlsbad Interchange 115 kV - Carlsbad Interchange 69 kV	-	06/01/07	\$2,750,000			Need 69 kV study - generator may defer, new load may require 115 kV. No switching available.
526	XFR - Floyd Co 115/69 kV	06/01/08	06/01/07	\$1,375,000			Studies will be conducted to further analyze 69 kV system - alternate solution will likely alleviate overload.
526	XFR - Lubbock East 115/69 kV	06/01/08	06/01/07	\$1,556,906			
526	XFR - Lubbock East 115/69 kV	09/01/08	06/01/07	\$1,300,000			
526	XFR - Lubbock East 115/69 kV	09/01/08	06/01/07	\$1,300,000			
526	XFR - Lubbock East 230/115 kV	12/31/07	06/01/07	\$3,000,000			
534	Line - Phillipsburg - Rhoades 115 kV Ckt 1	12/01/08	12/01/08	\$6,250,000			
536	Line - Gill Energy Center - Peck 69 kV Rebuild	06/01/08	06/01/08	\$4,040,000	12 mos		Mitigation not required since project deferred beyond 10 year planning period.
536	Line - Murray Gill Energy Center - MacArthur 69 kV Uprate	06/01/08	06/01/08	\$143,000			
536	Line - Dearing - Coffeyville 69 kV Rebuild	06/01/08	06/01/08	\$390,000			
536	Line - Coffeyville - CRA 69 kV Rebuild	06/01/08	06/01/08	\$250,000			
536	Line - Stranger Creek - Thornton Street 115 kV Addition	06/01/08	06/01/07	\$2,500,000			Mitigation not required if Project completed before 08 Summer Peak. LOA received by Westar 2 February 2007 with required date 1 June 2007
536	XFR - County Line 115/69 kV Replacement	07/31/08	06/01/07	\$2,860,000	14 mos		Mitigation not required if Project completed before 08 Summer Peak. LOA received by Westar 2 February 2007 with required date 1 June 2007
536	Line - Chase - White Junction 69 kV Rebuild	07/01/08	07/01/08	\$2,400,000			
536	Line - Wichita - Reno County 345 kV Addition	12/01/08	07/01/09				
536	XFR - Reno County 345/115 kV #1 Addition	12/31/08	07/01/09	\$42,800,000	24 mos		
536	Multi - Hutchinson 115 kV conversion	12/31/08	06/01/06	\$1,900,000	20 mos		
536							
536							
536							
536							
540	Line - Blue Springs - Duncan Road 161 kV	06/01/08	06/01/08		8- months (DELETED BY FRANK)		The project has been postponed since a new emergency rating of 275 MVA has been applied on the 161 kV line from Blue Spring East to Duncan Road. The conductor can sustain 100C degree for four hours under emergency
540	Line - Pope Lane to Smithville 161kV	06/01/08	06/01/08	\$4,550,000			
541	Multi - Lackman Sub	06/01/08	06/01/08	\$138,200	6 months		
541	Multi - Lackman Sub	06/01/08	06/01/08				
541	Line - Terrace - Boulevard 161 kV	06/01/08	11/01/08	\$4,352,600	10 months		
541	Line - Crosstown - Boulevard 161 kV	06/01/08	06/01/08	\$4,750,000			project will be modified due to ROW problems; date uncertain
544	Line - SUB 167 - RIVERTON - SUB 406 - RIVERTON SOUTH 1	06/01/08	06/01/08	\$20,000	6 months		
544	Multi - Riverdale - Ozarks 161 kV Ckt 1	12/31/08	06/01/10	\$14,057,000	30 months		
544							
544							
544							
Year 2009				\$162,776,469			
502	XFR - Cocodrie 230/138 kV	06/01/10	06/01/10	\$3,000,000			
520	Line - Riverside Station - Explorer Glenpool 138 kV Ckt 1	06/01/09	06/01/09	\$1,000,000			
523	XFR - Claremore 161/69 kV	06/01/09	05/30/11	\$6,000,000			
524	Line - Explorer Glenpool - Beeline 138 kV Ckt 1	06/01/09	06/01/09	\$200,000			
524	Line - Fort Smith - Colony 161 kV	06/01/09	06/01/10	\$2,137,500			
524	Line - Explorer Glenpool - Riverside Station 138 kV Ckt 1	06/01/09	06/01/09	\$400,000			
525	Line - Little Axe - Noble 69 kV	06/01/09	06/01/09	\$2,640,000			
526	Line - Bushland Interchange 115 kV - Northeast Hereford Interchange 115 kV	-	06/01/09	\$10,654,759			Exploratory project - not currently recommended. Better project to tap Potter-Roosevelt 345 kV and run 115 kV to Cargill. Will require additional analysis.
526	Multi - State Line 230/115 kV State Line-Graves 115kV and Graves XF	06/01/10	06/01/14	\$2,500,000			

Southwest Power Pool
Project Tracking Report

SPP Area	Project Name	In-Service Date	RTO Reliability Need Date	Cost Estimate	Project Lead Time	Projec Status	Project Status Comments
526	Multi - State Line 230/115 kV State Line-Graves 115kV and Graves XF	06/01/10	06/01/14	\$4,374,496			
526	Multi - State Line 230/115 kV State Line-Graves 115kV and Graves XF	06/01/10	06/01/14	\$5,600,000			
526	Multi - Seven Rivers - Pecos -Potash 230 kV	06/01/09	06/01/09				
526	Multi - Seven Rivers - Pecos -Potash 230 kV	06/01/09	06/01/09	\$15,891,640			
526	Multi - Seven Rivers - Pecos -Potash 230 kV	06/01/09	06/01/09				
526	XFR - Cochran 115/69 kV	06/01/09	06/01/08	\$2,750,000			
536	Line - Peck - Bell 69 kV	01/01/09	01/01/09	\$2,800,000			Mitigation not required since project deferred beyond 10 year planning period.
536	Line - Jarbalo - 166th Street 115 kV Rebuild	06/01/09	06/01/09	\$2,200,000			
536	Line - Evans - Grant - Chisolm Rebuild and Conversion Project	06/01/09	06/01/09	\$3,600,000			
536	Line - Evans - Grant - Chisolm Rebuild and Conversion Project	06/01/09	06/01/09	\$664,074			
536	Line- 166th - Jaggard Junction 115 kV Rebuild	06/01/09	06/01/09	\$1,500,000			
536	Line - Evans - Grant - Chisolm Rebuild and Conversion Project	06/01/09	06/01/09	\$2,000,000			
536	Line - Evans - Grant - Chisolm Rebuild and Conversion Project	06/01/09	06/01/09	\$6,510,000			
536	Line - Jaggard Junction - Pentagon 115 kV Rebuild	06/01/09	06/01/09	\$1,900,000			
536	Line - Gill Energy Center East - Gill Energy Center Jct 69 kV Rebuild	06/01/09	06/01/09	\$1,250,000			
536	Line - King Hill - Kelly 115 kV Rebuild	06/01/09	06/01/09	\$3,250,000			
536	Line - SW Lawrence - Wakarusa 115 kV Rebuild	06/01/09	06/01/09	\$1,400,000			
536	Line - Reno County - Summit 345 kV Addition	12/01/09	01/01/11		24 mos		
536	XFR - Reno County 345/115 kV #2 Addition	12/01/09	01/01/11	\$42,800,000			
536	XFR - Dearing 138/69 kV #2 Addition	06/01/11	06/01/09	\$1,700,000	18 mos		
536	XFR - Stranger Creek 345/115 #2 Addition	06/01/09	06/01/09	\$8,000,000	24 mos		
539	Line - Spearville - Judson Large 115 kV Ckt 2	06/01/09	06/01/09	\$8,310,000	12 months		This project is part of the second transmission path between the Dodge City area and Spearville 230 kV Sub. This new line would be built in 230 kV system but operated in 115 kV for the time being. This project is proposed to address two issues. Firstly, at present, Judson Large generation may not be taken off line on any seasons to perform maintenance due to potential voltage collapse for loss of Spearville to North Judson Large. After the described project, Judson Large Plant will no longer be an RMR. Secondly, under the category C contingency of losing the 115 kV line from Spearville to North Judson Large followed by breaker failure at North Judson Large Sub, the system would suffer major generation unstable, large loss of loads, and wind farm trips. Further investigations should be carried out to confirm this instability issue.
539	XFR - Spearville 230/115kV	06/01/09	06/01/09	\$4,800,000	6 months		This project is part of the second transmission path between the Dodge City area and Spearville 230 kV Sub. This new line would be built in 230 kV system but operated in 115 kV for the time being. This project is proposed to address two issues. Firstly, at present, Judson Large generation may not be taken off line on any seasons to perform maintenance due to potential voltage collapse for loss of Spearville to North Judson Large. After the described project, Judson Large Plant will no longer be an RMR. Secondly, under the category C contingency of losing the 115 kV line from Spearville to North Judson Large followed by breaker failure at North Judson Large Sub, the system would suffer major generation unstable, large loss of loads, and wind farm trips. Further investigations should be carried out to confirm this instability issue.
540	Multi - 161kV Tap of Nashua to Liberty West	06/01/09	06/01/09	\$1,260,000			
540	Multi - 161kV Tap of Nashua to Liberty West	06/01/09	06/01/09				
540	Line - Freeman - Anaconda 69 kV	06/01/09	06/01/09	\$20,000			
540	Multi - 161kV Tap of Platte City to Stranger Creek	06/01/09	06/01/09	\$7,127,000			
540	Multi - 161kV Tap of Platte City to Stranger Creek	06/01/09	06/01/09				
540	Line - Iatan - Platte City 161 kV Ckt 1	06/01/08	06/01/09	\$1,050,000			
540	Line - Longview - Sampson 161 kV	06/01/09	06/01/09	\$1,250,000			
540	Line - Sampson - Grandview East 161 kV	06/01/09	06/01/09	\$1,250,000			
541	Line - Craig - Lenexa 161 kV	06/01/09	06/01/09	\$192,000	6 months		
544	Line - SUB 124 - AURORA H.T. - SUB 383 - MONETT 1	06/01/09	06/01/11	\$5,000	6 months		
544	Line - SUB 124 - AURORA H.T. - SUB 152 - MONETT H.T. 1	06/01/09	06/01/09	\$5,000	6 months		
544	Line - Sub 145 - Joplin West 7th - Sub 341 - Joplin NorthWest	06/01/08	06/01/09	\$780,000	12 months		
544	Line - Sub 389 - Joplin Southwest - Sub 422 - Joplin 24th & Connecticut	06/01/09	06/01/09	\$5,000	6 months		
Year 2010				\$167,598,700			
151	Line - Grandview - Osage	06/01/10	06/01/09	\$6,000,000	3 yrs		
151	Line - Mt. Ida - Milton	-	06/01/10	\$15,000,000			Mt. Ida Cap Bank is being contemplated - no firm in service date. Mt. Ida - Milton not in construction plan through 2010. Indefinitely Deferred
502	Line - Bayou Rapides to Twin Bridges 138 kV	06/01/10	06/01/10	\$7,800,000			
515	Line - BULL SHOALS - BULL SHOALS 161kV	06/01/10	06/01/10	\$2,000,000			
520	XFR - Duncan - Duncan 138kV	06/01/10	06/01/10	\$1,800,000			
520	Line - Valliant Substation - Install 345 kV terminal equipment	05/01/10	05/01/10	\$2,500,000			
520	Line - Clinton City Wave Trap	06/01/10	06/01/10	\$75,000			
520	XFR - Centerton 345/161 kV	06/01/10	06/01/10	\$9,500,000			
520	Line - Bainford Tap - Bainford 161 kV	06/01/10	06/01/10	\$1,100,000			

Southwest Power Pool
Project Tracking Report

SPP Area	Project Name	In-Service Date	RTO Reliability Need Date	Cost Estimate	Project Lead Time	Projec Status	Project Status Comments
520	Line - Carthage - Rock Hill	06/01/10	06/01/10	\$650,000			
520	Line - Daingerfield - Jenkins Rec T	06/01/10	06/01/10	\$250,000			
520	Line - Flint Creek - East Centerton 345 kV	06/01/10	06/01/10	\$23,685,000			
523	Multi-Kansas Tap - Siloam City 161KV	06/01/10	06/01/13	\$4,212,500			
523	Multi-Kansas Tap - Siloam City 161KV	06/01/10	06/01/13	\$1,700,000			
524	Line - Fitzhugh - Helberg 161 kV	06/01/10	06/01/10	\$1,416,000			
524	Line - Great Lakes Carbon - Altus 161 kV	06/01/10	06/01/10	\$543,000			
524	Line - Altus - Fitzhugh 161 kV	06/01/10	06/01/10	\$660,000			
524	Line - Igo - Noark 161 kV	06/01/10	06/01/10	\$2,994,000			
524	Line - Little Spadra - Igo 161 kV	06/01/10	06/01/10	\$2,112,000			
524	Line - Noark - Great Lakes Carbon 161 kV	06/01/10	06/01/10	\$522,000			
524	Line - Park Lane - Ahlso Tap 69 kV	06/01/10	06/01/10	\$50,000			
524	Line - Razorback - Igo 161 kV	06/01/10	06/01/10	\$2,973,000			
524	Line - Razorback - Short Mountain 161 kV	06/01/10	06/01/10	\$500,000			
524	Line - Short Mountain - Branch 161 kV	06/01/10	06/01/10	\$3,231,000			
525	Line - Valiant - Hugo 345 kV	05/01/10	05/01/10	\$11,000,000			
525	XFR - Valiant 345/138 kV	05/01/10	05/01/10	\$5,000,000			
526	XFR - Yoakum County Interchange 115 kV - Yoakum County Interchange 230 kV	-	06/01/10	\$3,000,000			
531		06/01/10	06/01/10				
531	Multi - Knoll -Hays -Vine	06/01/10	06/01/10	\$536,000			
531		06/01/10	06/01/10				
534	Line - Scott City - Manning Tap 115 kV	06/01/10	06/01/10	\$1,500,000			
536	Line - Halstead - Mud Creek Junction 69 kV Rebuild	06/01/10	06/01/10	\$2,500,000			
536	Line - Oaklawn - Oliver 69 kV Rebuild	06/01/10	06/01/10	\$483,000			
536	Line - 95th & Waverly - Captain Jct 115 kV Rebuild	06/01/10	06/01/10	\$2,600,000			
536	Line - Circle - HEC GT 115 kV Rebuild	06/01/10	06/01/10	\$300,000			
536	Line - Circleville - King Hill 115 kV Rebuild	06/01/10	06/01/10	\$5,200,000			
536	XFR - Weaver 138/69 kV #2 Addition	06/01/10	06/01/10	\$1,200,000			
536	Line - Lawrence Energy Center Unit 4 - Jarbalo 115 kV Rebuild	06/01/10	06/01/10	\$1,300,000			
536	Line - Reno(Circle)-Moundridge Project Rebuild	06/01/10	06/01/10	\$5,800,000			
536	Line - Mid-American Junction - Newton 69 kV Rebuild	06/01/10	06/01/10	\$1,300,000			
536	Line - Mud Creek Junction - Mid-American Junction 69 kV Rebuild	06/01/10	06/01/10	\$360,000			
536	Line - Tecumseh Hill - Stull Tap 115 kV Rebuild	06/01/10	06/01/10	\$3,300,000			
536	XFR - Reno(Circle)-Moundridge Project Rebuild	06/01/10	06/01/10	\$1,700,000			
540	Line - Ritchfield - Sibley 161 kV	06/01/10	06/01/10	\$1,250,000			
540	Line - Lone Jack - Greenwood 161 kV	06/01/10	06/01/10	\$1,600,000			
540	Line - Hallmark - Ritchfield 161 kV	06/01/10	06/01/10	\$1,250,000			
540	Line - Nevada Plant - Nevada Tap 69 kV	06/01/10	06/01/10	\$711,000			Cancelled. There is no need for this project.
540		06/01/10	06/01/10	\$2,422,500			Postponed beyond 2017. The overloading issues on Warrensburg Plant - Warrensburg East 69kV was caused by the low voltage when the Clinton 161 kV tie between MPS and AECI was tripped out. To re-build the line does not adress the root problem. TO working with SPP on some alternative to address the root problem.
541	Line - Hillsdale - Cedar Niles 161 kV	06/01/12	06/01/10	\$5,418,700	24 months		local reliability project delayed 2 year; mitigation not needed.
541	Line - North Louisburg - Middle Creek 161 kV	06/01/11	06/01/10	\$12,179,000	24 months		local reliability project, modified; North Louisburg-Paola 161kV line; Middle Creek sub delayed to 2012
544	Line - SUB 184 - NEOSHO SOUTH JCT. - Neosho (SWPA) 161 kV	06/01/10	06/01/10	\$1,215,000	12 months		
546	XFR - SWPS Bus - SWPS #2 161 kV	10/01/10	10/01/10	\$3,200,000	24 months		
Year 2011				\$84,549,711			
130	XFR - Luther 138/69/13.8 #2	-	06/01/11	\$672,000			Project is cancelled. Plan is to now move Luther 69 kV load to 138 kV in 2009.
151	Line - Murfreesboro - Gum Springs 115	-	12/01/11				
520	Line - Hope - Fulton 115 kV	06/01/11	06/01/11	\$100,000			
520	Line - North Market - Arsenal Hill	06/01/11	06/01/11	\$2,300,000			
520	Line - North Mineola - Mineola	06/01/11	06/01/11	\$350,000			
524	Line - 3rd St 69 kV	06/01/11	06/01/11	\$100,000			
524	Line - Ada OC Pump - Ada OC Pump Tap 69 kV	06/01/11	06/01/11	\$1,640,000			
524	Line - Muldrow to 3rd St 69 kV	06/01/11	06/01/11	\$100,000			
525	Line - Anadarko - Cyril 69 kV	06/01/11	06/01/11	\$3,120,000			
525	XFR - Anadarko 138/69 kV	06/01/11	06/01/11	\$2,000,000			
525	XFR - Franklin SW 138/69 kV	06/01/11	06/01/11	\$1,800,000			
526	XFR - Crosby County Interchange 69 kV - Crosby County Interchange 115 kV	-	06/01/07	\$1,426,786			Studies will be conducted to further analyze 69 kV system.
526	Multi - Kress interchange	-	06/01/11	\$6,000,000			Exploratory project - still under study.
526	Multi - Kress interchange	-	06/01/11	\$9,053,875			Exploratory project - still under study.

Southwest Power Pool
Project Tracking Report

SPP Area	Project Name	In-Service Date	RTO Reliability Need Date	Cost Estimate	Project Lead Time	Project Status	Project Status Comments
534	Line - Holcomb - Plymell 115 kV	06/01/11	06/01/11	\$1,980,000			
534	Line - Manning Tap - Dighton Tap 115 kV	06/01/11	06/01/11	\$2,100,000			
534	Line - Holcomb - Fletcher 115 kV	06/01/11	06/01/11	\$1,500,000			
534	Line - Dighton Tap - Beeler 115 kV	06/01/11	06/01/11	\$3,150,000			
534	Line - Beeler - Ness City 115 kV	06/01/11	06/01/11	\$1,800,000			
534	Line - Plymell - Pioneer Tap 115 kV	12/01/11	12/01/10	\$2,380,000			
534	XFR - Spearville 345/230 kV	06/01/11	06/01/11	\$4,500,000			
536	Line - Liberty - CRA 115 kV Uprate	06/01/11	06/01/11	\$75,000			
536	XFR - Lawrence Hill 230/115 kV #2 Addition	06/01/11	06/01/11	\$4,500,000			
536	Line - Gill Energy Center - Oatville 69 kV	06/01/11	06/01/11	\$920,000			
536	Line - Tecumseh - Tecumseh Hill 115 kV Rebuild	06/01/11	06/01/11	\$90,000			
536	Line - Creswell - Oak 69 kV	06/01/11	06/01/13	\$2,000,000			
541	XFR - Paola 345/161 kV	-	06/01/11	\$16,925,000			
541	Line - College - Craig 161 kV	06/01/09	06/01/11	\$1,193,400	24 months		project cancelled; replaced by West Gardner transformer upgrade project; 6/1/08; \$5,000,000
541	Line - Paola - Middle Creek 161 kV	06/01/12	06/01/12	\$2,622,850	18 months		
541	Multi - Waldron Sub	06/01/13	06/01/11	\$1,632,300	18 months		local reliability project, delayed 2 years; mitigation not needed.
541	Multi - Waldron Sub	06/01/13	06/01/11				local reliability project, delayed 2 years; mitigation not needed.
541	Line - Hillsdale - Lackman 161 kV	06/01/14	06/01/11	\$3,553,000	24 months		local reliability project, delayed 2 years; mitigation not needed.
541	Line - Stilwell - BUCYRUS 161 kV	06/01/11	06/01/11	\$12,000	6 months		
541	Line - Cedar Niles - Quarry 161 kV	06/01/12	06/01/10	\$3,756,500	18 months		local reliability project, Clare substation need delayed; mitigation not needed.
544	Line - Monett City South - Monett City East 69 kV	06/01/11	06/01/11	\$275,000			
546	Line - Kickapoo - Sunset 69 kV	06/01/11	06/01/11	\$829,000	24 months		
546	Line - Golden - Springfield 69kV	06/01/11	06/01/11	\$46,500	24 months		
546	Line - Golden - Springfield 69kV	06/01/11	06/01/11	\$46,500	24 months		
Year 2012				\$54,767,514			
520	Multi - Bonanza - North Huntington 69kV	06/01/12	06/01/12	\$6,000,000			
520	Multi - Bonanza - North Huntington 69kV	06/01/12	06/01/12	\$5,300,000			
520	Multi - Bonanza - North Huntington 69kV	06/01/12	06/01/12	\$180,000			
520	Multi - Bonanza - North Huntington 69kV	06/01/12	06/01/12	\$2,500,000			
520	Multi - Bonanza - North Huntington 69kV	06/01/12	06/01/12	\$2,300,000			
520	Multi - Bonanza - North Huntington 69kV	06/01/12	06/01/12	\$1,000,000			
520	Multi - Flint Creek - E Centerton 161 kV	-	06/01/15	\$15,200,000			
520	Line - Forest Hills - Quitman 69 kV	06/01/12	06/01/12	\$100,000			
520	Line - Canton - Starr 138kV	-	06/01/12	\$3,600,000			Rayburn Country Project
526	LINE - Pringle Interchange 115 kV - Etter Rural Sub115 kV	-	06/01/12	\$10,912,514			Project not being pursued - Alternate projects being pursued.
541	Line - Sunflower - West Gardner 161 kV	-	06/01/12	\$3,750,000			local reliability project, need for Sunflower substation delayed; mitigation not needed.
544	Line - SUB 64 - JOPLIN 10TH ST. - SUB 145 - JOPLIN WEST 7TH 1	06/01/12	06/01/12	\$55,000	6 months		
544	Line - Jamesville - SUB 415 - BLACKHAWK JCT. 1	06/01/12	06/01/12	\$50,000	6 months		
541	Line - Quarry - Clare	06/01/13	06/01/12	\$1,385,000	18 months		local reliability project, Clare substation need delayed; mitigation not needed.
546	Line - Southwest - Brookline 161 kV	06/01/12	06/01/12	\$450,000	24 months		
546	Line - Southwest - Southwest Disposal 161 kV	06/01/12	06/01/12	\$175,000	24 months		
546	Line - Southwest Disposal - Battlefield 161 kV	06/01/12	06/01/12	\$675,000	24 months		
546	Line - James River - Twin Oaks 69 kV	06/01/12	06/01/12	\$1,135,000	24 months		
Year 2013				\$153,978,490			
520	Line - Bann - Lonestar Ordinance Tap 69kV	06/01/13	06/01/13	\$25,000			
520	Line - Greggton - Lake Lamond 69 kV	06/01/13	06/01/13	\$1,496,000			
520	Line - Dyess - Elm Springs REC 161 kV	06/01/13	06/01/13	\$300,000			
520	Line - Winnsboro - Magnolia Tap 69kV	06/02/13	06/01/13	\$250,000			
520	Multi - Diana - Barton's Chapel kV	-	06/01/13	\$6,000,000			Rayburn Country Project
520	Multi - Diana - Barton's Chapel 345kV	06/01/13	06/01/13	\$96,000,000	5 years		
524	Line - Ratliff 69 kV	06/01/13	06/01/13	\$75,000			
544	Line - SUB 436 - WEBB CITY CARDINAL - SUB 110 - ORONOGO JCT. 1	06/01/13	06/01/13	\$400,000	12 months		
524	Line - Earlsboro - Fixico 69 kV	06/01/13	06/01/13	\$150,000			
524	Line - Wildhorse - Ratliff 69 kV	06/01/13	06/01/13	\$75,000			
524	Line - HSL East - HSL West 69 kV	06/01/13	06/01/13	\$250,000			
526	Multi - N. Amarillo - Hasing - Van Buren 69kV	-	06/01/13	\$391,100			Not recommended project - need to convert north Amarillo 69 kV loop to 115 kV instead.
526	Multi - N. Amarillo - Hasing - Van Buren 69kV	-	06/01/13				Not recommended project - need to convert north Amarillo 69 kV loop to 115 kV instead.
526	Multi - Potter County - Roosevelt 345 kV 230/345 kV transformer	-	06/01/13				
526	Multi - Potter County - Roosevelt 345 kV 230/345 kV transformer	-	06/01/13	\$38,504,390			
526	XFR - Roosevelt County Interchange 115 kV - Roosevelt County Interchange 230 kV	06/01/13	06/01/13	\$2,750,000			
536	Line - 64th - Minneha 69 kV Rebuild	06/01/13	06/01/13	\$680,000			
536	Line - Eastborough - Minneha 69 kV Rebuild	06/01/13	06/01/13	\$207,000			
536	Line - Mockingbird - Stull Tap 115 kV Rebuild	06/01/13	06/01/13	\$2,200,000			

Southwest Power Pool
Project Tracking Report

SPP Area	Project Name	In-Service Date	RTO Reliability Need Date	Cost Estimate	Project Lead Time	Projec Status	Project Status Comments
536	XFR - Altoona XFR Outage Project Replacement	06/01/13	06/01/13	\$825,000			
536	XFR - Halstead 138/69 kV #4 Replacement	06/01/13	06/01/13	\$1,700,000			
536	XFR - Liberty 138/69 kV #2 Addition	06/01/13	06/01/13	\$1,700,000			
Year 2014				\$83,631,966			
520	Line - Big Sandy - Perdue 69kV	06/01/14	06/01/14	\$2,700,000			
520	Line - Coffeyville Tap - Dearing - 138 kV	06/01/10	06/01/10	\$1,473,750			
520	XFR - Weatherford Southeast - Weatherford Southeast 138kV	06/01/14	06/01/14	\$1,800,000			
520	Line - Howell - Kilgore 69kV	06/01/14	06/01/14	\$2,000,000			
520	Multi - Siloam Springs - South Fayetteville 69kV	06/01/14	06/01/14	\$3,600,000			
520	Multi - Siloam Springs - South Fayetteville 69kV	06/01/14	06/01/14	\$5,200,000			
520	Multi - Siloam Springs - South Fayetteville 69kV	06/01/14	06/01/14	\$11,000,000			
526	Line - Curry - Bailey 115kV	-	06/01/14	\$11,148,185			
526	Line - San Andress Sub 115 kV - Mustang Station S. 115 kV	-	06/01/14	\$1,742,892			
536	Line - Gill - Interstate 138 kV Uprate	06/01/14	06/01/14	\$50,000			
536	Line - Reset CTs on Moundridge - Newton 69 kV	06/01/14	06/01/14	\$20,000			
536	XFR - Rose Hill 345/138 kV #3 Addition	06/01/14	06/01/14	\$5,000,000			
536	Line - Sooner - Rose Hill 345 kV Addition	06/01/16	06/01/16	\$27,500,000			
544	Line - SUB 217 - FAIRPLAY EAST - SUB 602 - BOLIVAR PLANT 1	06/01/14	06/01/14	\$2,636,153	18 months		
544	Line - SUB 368 - DADEVILLE EAST - SUB 217 - FAIRPLAY EAST	06/01/14	06/01/14	\$1,660,986	18 months		
544	Multi - Sub 170 - Nichols St. - SUB 359 - REPUBLIC EAST	06/01/14	06/01/14	\$4,550,000			
544	Multi - Sub 170 - Nichols St. - SUB 359 - REPUBLIC EAST	06/01/14	06/01/14		18 months		
544	Line - SUB EXPLORER SPRING CITY TAP - SUB 389 - JOPLIN SOUTHWEST 1	06/01/14	06/01/14	\$1,550,000	12 months		
Year 2015				\$53,251,443			
520	Line - Snyder - Snyder 138kV	06/01/15	06/01/15				
520	Line - Quitman - Westwood 69kV	06/01/15	06/01/15	\$1,600,000			
520	Line - East Centerton - Bentonville 69kV	06/01/15	06/01/15	\$1,300,000			
520	Multi - Woodlawn - Baldwin - Karnack Tap	06/01/15	06/01/15	\$6,000,000			
520	Multi - Woodlawn - Baldwin - Karnack Tap	06/01/15	06/01/15				
520	Line - Maud - Fixico Tap	06/01/15	06/01/15	\$8,900,000			
524	Line - Russet to Glasses 138 kV	06/01/15	06/01/15	\$150,000			
525	Line - Cyril to Medicine Park Jct	06/01/15	06/01/15	\$750,000			
526	Line - Roosevelt County Interchange 115 kV - Curry County Interchange 115 kV	12/01/10	06/01/12	\$200,000			
526	XFR - Chaves 230/115 kV	06/01/15	06/01/15	\$3,000,000			
526	Multi - Hale Co -- LH Cox Interchange -- Cox Interchange 115 kV	-	06/01/15	\$4,522			
526	Multi - Hale Co -- LH Cox Interchange -- Cox Interchange 115 kV	-	06/01/15	\$890,921			
531	Line - Hutchinson Energy Center - Huntsville - St. John 115 kV Rebuild	06/01/15	06/01/15	\$7,965,000			
531	Line - Hutchinson Energy Center - Huntsville - St. John 115 kV Rebuild	06/01/15	06/01/15	\$8,637,000			
536	Line - Chapman - Clay Center 115 kV Uprate	06/01/15	06/01/15	\$10,000			
536	Line - Lawrence Hill - Wren 115 kV Rebuild	06/01/15	06/01/15	\$1,400,000			
536	Multi - Litchfield - Aquarius - HudsonJct. 69 kV Uprate	06/01/15	06/01/15	\$30,000			
536	Multi - Litchfield - Aquarius - HudsonJct. 69 kV Uprate	06/01/15	06/01/15				
536	Multi-Fort Scott-AECI tie	06/01/15	06/01/15	\$3,000,000			
539	Line - Greenleaf - Clay Center 115 kV	06/01/15	06/01/15	\$7,520,000	12 months		
541	Line - Avondale- Gladstone 161 kV	06/01/12	06/01/15	\$13,000	6 months		
546	Line - Norton - NEERGRD 69 kV	06/01/15	06/01/15	\$1,881,000	24 months		
Year 2016				\$107,527,741			
520	Line - Lone Star South - Pittsburg 138kV	06/01/16	06/01/16	\$300,000			
520	Line - Evenside - Northwest Henderson 69 kV	06/01/16	06/01/16	\$200,000			
520	Line - Northwest Henderson - Poynter 69kV	06/01/16	06/01/16	\$1,800,000			
523	Xfr - Wagoner 161/69 kV	06/01/16	06/01/16	\$2,786,894			
523	Line - Maid - Pryor Foundry South	06/01/16	06/01/16	\$370,530			
523	Line - Maid - Redden	06/01/16	06/01/16	\$370,530			
524	Line - Park Lane 138 kV	06/01/16	06/01/16	\$500,000			
524	Line - Canadian- Cedar Lane 138 kV	06/01/16	06/01/16	\$12,637			
524	Line - Osage - Continental Blacks 69 kV	06/01/16	06/01/16	\$200,000			
524	Line - Kilgore - VBI 69 kV	06/01/16	06/01/16	\$90,000			
524	Line -Sooner - Rose Hill 345 kV	12/31/10	06/01/16	\$45,000,000			
525	XFR - Paoli 138 kV/69 kV Xfr	06/01/16	06/01/16	\$1,500,000			
525	Line - Fletcher - Marlow Jct 69 kV	06/01/16	06/01/16	\$2,000,000			
526	XFR - Lynn County 115/69 kV 3rd XF	06/01/16	06/01/16	\$1,375,000			
526	Line - Lyntegar REC-Brownfield 69 kV - Terry County Interchange 69 kV	06/01/16	06/01/16	\$1,420,000			
526	XFRM - TUCO Interchange345/115 KV XF	06/01/16	06/01/16	\$10,318,679			
536	Line - Mead - Plaza 69 kV Uprate	06/01/16	06/01/16	\$60,000			

Southwest Power Pool
Project Tracking Report

SPP Area	Project Name	In-Service Date	RTO Reliability Need Date	Cost Estimate	Project Lead Time	Project Status	Project Status Comments
541	Line - Northeast - Crosstown 161 kV	06/01/16	06/01/16	\$650,000			project no longer needed; no longer problem in Aggregate Study
544	Line - SUB 109 - ATLAS JCT. - SUB 108 - CARTHAGE NORTHWEST 1	06/01/16	06/01/16	\$1,277,935	18 months		
544	Line - SUB 152 - MONETT H.T. - SUB 383 - MONETT	06/01/16	06/01/16	\$425,000			
544	Line - SUB 291 - BAXTER SPRINGS 12TH ST. - SUB 406 - RIVERTON SOUTH 1	06/01/16	06/01/16	\$5,000	6 months		
544	Line - SUB 383 - MONETT 161kV - MONETT 5 161kV	06/01/16	06/01/16	\$7,369,319	48 months		
544	Line - SUB 59 - JOPLIN 26TH ST. - SUB 258 - GATEWAY SOUTH	06/01/16	06/01/16	\$3,770,000	36 months		
544	XFR - MONETT 5 161kV - Monett City South 69kV	06/01/16	06/01/16	\$8,000,000	36 months		
544	XFR - JOPLIN 59 161 kV - SUB 59 - JOPLIN 26TH ST. 69kV	06/01/16	06/01/16	\$9,200,000	48 months		
544	Line - JOPLIN 59 - SUB 439 STATELINE	06/01/16	06/01/16	\$7,182,217	48 months		
546	Line - Brookline - Junction	06/01/16	06/01/16	\$1,344,000	24 months		
546	Multi - Battlefield - Sunset 161 kV & 161/69 kV XF	06/01/16	06/01/16		60 months		We think this project is no longer needed (Delete it)
Year 2017				\$891,000			
540	Line - Clinton 161 - Clinton Green St 69 kV	06/01/17	06/01/10	\$441,000			Postponed beyond 2017. The line projects on Clinton-Clinton Plant/Clinton Green were identified due to an error in the model.
540	Line - Clinton 161 - Clinton Plant 69 kV	06/01/17	06/01/10	\$450,000			Postponed beyond 2017. The line projects on Clinton-Clinton Plant/Clinton Green were identified due to an error in the model.
Year 2020				\$150,073,217			
525	Line - SPEARVILLE - Mooreland 345	05/01/15	05/01/15	\$5,000,000			
525	Line - SPEARVILLE - Mooreland 345	05/01/15	05/01/15	\$29,000,000			
534	Line - SPEARVILLE - Mooreland 345	06/01/11	05/01/15	\$43,000,000			
525	Line - Mooreland 345 - Potter County Interchange 345 kV	06/01/15	06/01/15	\$2,500,000			
526	Line - Mooreland 345 - Potter County Interchange 345 kV	-	06/01/15	\$61,850,000			Not recommended - should be Mooreland - TUCO
526	XFR - Potter County Interchange 345 kV - Potter County Interchange 230 kV - Potter Cour	06/01/15	06/01/15	\$8,723,217			

Southwest Power Pool Inc
Project Tracking Report

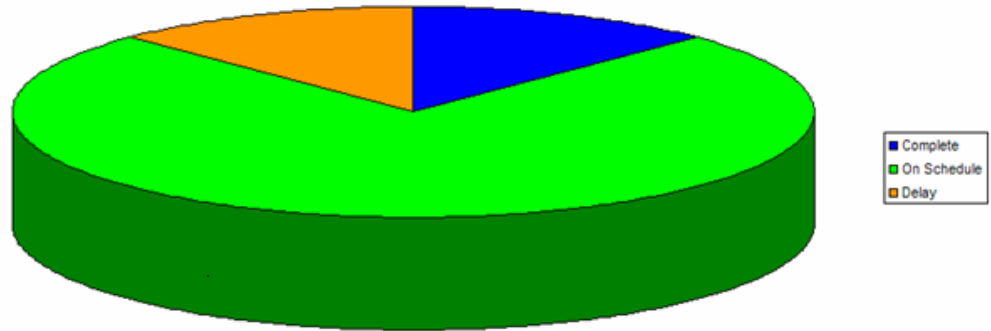
SPP Area	Project Name	In-Service Date	RTO Reliability Need Date	Cost Estimate	Project Lead Time	Projec Status	Project Status Comments
Year 2006				\$7,329,186			
520	Device - Arsenal Hill	06/01/06	06/01/06	\$432,000			
520	Device - Catoosa	06/01/06	06/01/06	\$394,000			
524	Device - Chickasaw	07/31/06	07/31/06	\$455,263			
524	Device - Caney Creek	12/31/06	06/01/11	\$532,263			
534	Device - Ruletton3	12/31/06	12/31/06	\$500,000			
536	Device - Mulbery	03/31/06	02/02/06	\$324,960			
536	Device - Clearwater	12/31/06	12/31/06	\$490,700			
539	Device - East Liberal	09/01/06	06/01/06	\$600,000			
539	Device - Plainville	10/01/06	06/01/05	\$3,000,000			
540	Device - Warrensburg East	08/01/06	06/01/06	\$600,000			
Year 2007				\$13,453,913			
502	Device - Many	06/01/08	06/01/07	\$250,000			
502	Device - Natchitoches	06/01/09	06/01/10	\$707,400			
520	Multi - Tulsa Project	07/01/07	06/01/07	-			
520	Multi - Tulsa Project	07/01/07	06/01/07	-			
524	Device - Various	12/31/07	12/31/07	\$3,711,300			
524	Device - Osage	12/01/07	12/01/07	\$336,089			
524	Device - Woodring	12/31/07	12/31/07	\$336,089			
525	Device - Rush Springs 69 kV	12/1/07	06/01/06	\$90,000			Shed load at Rush Springs Substation (up to 5MW in 2007 Summer Peak). MW values mentioned are typical for a Summer Peak case. Mitigation Plan yet to be reviewed by SPP
525	Device - Snyder	12/1/07	04/01/07	\$100,000			
525	Device - Pink Southwest 138 kV	12/1/07	04/01/07	\$216,000			Shed load at Pink Substation (up to 9MW in 2007 Summer Peak) Shed load at Franklin Substation (up to 18MW in 2007 Summer Peak). MW values mentioned are typical for a Summer Peak case. Mitigation Plan yet to be reviewed by SPP
526	Device - Carlisle Interchange	11/1/2007	06/01/07	\$571,983			
526	Device - Chaves County Interchange	11/01/07	11/01/07	\$500,000			
526	Device - Bowers	11/01/07	06/01/08	\$300,000			
526	Device - Lubbock South Interchange	05/18/07	06/01/07	\$584,165			
526	Device - LC SOL	-	06/01/13	\$311,040			Substation belongs to Lamb County Cooperative, not SPS. Needs additional analysis
526	Device - San Andress Sub	-	06/01/07	\$750,000			Needs further analysis - Seminole project may mitigate.
536	Device - UDALL 2	01/31/07	12/31/06	\$376,847			
536	Device - Wathena	06/30/07	06/01/12	\$525,000			
536	Device - NE Parsons	12/31/07	06/01/07	\$1,000,000	14 mos		Mitigation not required if Project completed before 08 Summer Peak. LOA received by Westar 2 February 2007 with required date 1 June 2007
536	Device - Parsons	12/31/07	06/01/07	\$525,000	14 mos		Mitigation not required if Project completed before 08 Summer Peak. LOA received by Westar 2 February 2007 with required date 1 June 2007
540	Device - St Joe 161 kV 50 MVAR cap	10/1/2007	10/1/2007	\$500,000			
540	Device - Nashua 161 kV 50 MVAR cap	10/1/2007	10/1/2007	\$500,000			
541	Device - South Waverly	10/01/07	06/01/07	\$713,000			
546	Device - Sunset	06/01/07	06/01/07	\$550,000	24 months		
Year 2008				\$13,900,673			
525	Device - Comanche	6/1/08	06/01/07	\$350,000			Shed load at Loco Substation (up to 3.5MW in 2007 Summer Peak) Shed load at Empire Substation (up to 5MW in 2007 Summer Peak). MW values mentioned are typical for a Summer Peak case. Mitigation Plan yet to be reviewed by SPP
525	Device - Cashion 69 kV	6/1/08	06/01/07	\$108,000			
526	Device - Cox Interchange	12/01/08	06/01/13	\$400,000			
526	Device - Tuco Interchange	02/01/08	06/01/07	\$1,251,333			Shunt Capacitors at TUCO - On track for 02/01/2008. (Mitigation not required if Project completed before 08 Summer Peak)
526	Device - Bailey Co Earth	-	06/01/13	\$311,040			BC-Earth is not our station - owned by Bailey Co. Electric Cooperative.
526	Device - Tuco Interchange	06/01/08	06/01/08	\$10,240,300			
536	Device - Nortonville 69 kV Cap	12/31/08	06/01/07	\$715,000	14 mos		Mitigation not required if completed before 08 Summer Peak. LOA received by Westar 2 February 2007 with required date 1 June 2007
536	Device - Sunset 69 kV Cap	12/31/08	06/01/07	\$525,000			Mitigation not required if Project completed before 08 Summer Peak. LOA received by Westar 2 February 2007 with required date 1 June 2007
Year 2009				\$2,624,850			
523	Device - Newport 69 kV	06/01/09	06/01/11	\$311,040			
523	Device - Pyramid Corners	06/01/09	06/01/11	\$155,520			

Southwest Power Pool Inc
Project Tracking Report

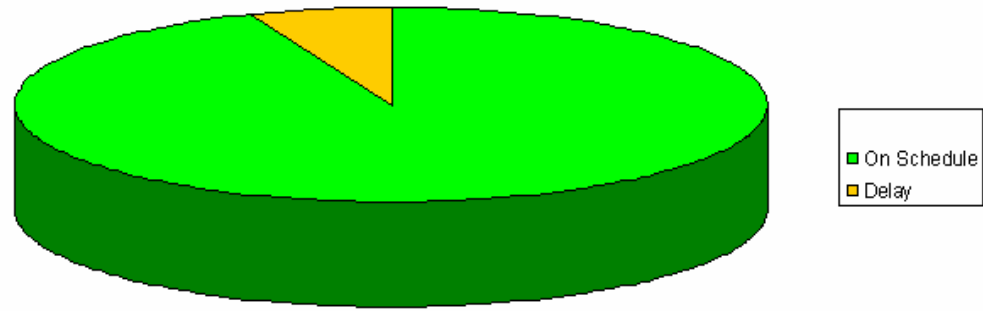
SPP Area	Project Name	In-Service Date	RTO Reliability Need Date	Cost Estimate	Project Lead Time	Projec Status	Project Status Comments
523	Device - Tahlequah City #1	06/01/09	06/01/13	\$67,195			
523	Device - Tahlequah City #2	06/01/09	06/01/13	\$67,195			
540	Device - Clinton	06/01/08	06/01/09	\$750,000			
540	Device - Warsaw 269.0	06/01/09	06/01/09	\$409,900			This cap bank is cancelled or postponed beyond 2017 since some VAR compensations were done in the distribution system in the area
541	Device - Craig 161kV	06/01/09	06/01/09	\$864,000			
Year 2010				\$5,000,000			
526	Device - Crosby	-	06/01/09	\$500,000			Needs further 69 kV analysis to see if complete Plainview-Floyd-Crosby trans. project mitigates it.
536	Device - 3rd & VanBuren	06/01/08	06/01/08	\$500,000	14 mos		
536	Device - CRRM	07/01/10	07/01/10	\$500,000			
546	Device - Mentor Substation	06/01/10	06/01/10	\$3,500,000	24 months		
Year 2011				\$4,016,000			
526	Device - Bushland Interchange 230 kV Ca	-	06/01/11	\$800,000			Needs further analysis - this is a wind farm outlet bus - no capacitors were identified in TS or GI studies
531	Device - St.John	06/01/11	06/01/11	\$216,000			
536	Device - Altamont 138 kV Cap	06/01/11	06/01/11	\$1,000,000			
536	Device - Springhill 115 kV Cap	06/01/11	06/01/11	\$1,000,000			
536	Device - Vaughn 115 kV Cap	06/01/11	06/01/11	\$1,000,000			
Year 2012				\$1,000,000			
536	Device - Florence 115 kV Cap	06/01/12	06/01/12	\$1,000,000			
Year 2013				\$4,508,000			
520	Device - Mena	06/01/13	06/01/13	\$550,000			
525	Device - Frederick 69 kV	06/01/13	06/01/13	\$108,000			
525	Device - East Kingfisher 69 kV	06/01/13	06/01/13	\$350,000			
536	Device - East Manhattan 115 kV Cap	06/01/13	06/01/13	\$1,000,000			
536	Device - Edwardsville 115 kV Cap	06/01/13	06/01/13	\$1,000,000			
544	Device - Quapaw	06/01/13	06/01/13	\$1,500,000	18 months		
Year 2014				\$7,853,200			
502	Device - Cane Bayou	06/01/14	06/01/14	\$777,600			
502	Device - Mandeville	-	06/01/14	\$777,600			
515	Device - Glencoe	06/01/14	06/01/14	\$540,000			
520	Device - Hobart	06/01/14	06/01/14	\$550,000			
524	Device - Panama 69 kV	06/01/14	06/01/14	\$108,000			
536	Device - Waverly 115 kV Cap	06/01/14	06/01/14	\$1,000,000			
539	Device - Plainville	06/01/14	06/01/14	\$1,500,000			
544	Device - Riverside Sub	06/01/14	06/01/14	\$2,600,000	24 months		
Year 2015				\$4,882,588			
502	Device - Madisonville	-	06/01/15	\$777,600			
524	Device - Altus 69 kV	06/01/15	06/01/15	\$54,000			
524	Device - South Oklahoma City Pump 69 kV	06/01/15	06/01/15	\$373,988			
524	Device - Various	-	06/01/15	\$200,000			
536	Device - Oxford 138 kV Cap	06/01/15	06/01/15	\$1,000,000			
536	Device - Rock Creek 69 kV Cap	06/01/15	06/01/15	\$427,000			
544	Device - Bolivar	06/01/15	06/01/15	\$1,500,000	24 months		
546	Device - Twin Oaks	06/01/13	06/01/15	\$550,000	24 months		
Year 2016				\$943,040			
526	Device - Bailey County Interchange 115kV	-	06/01/16	\$311,040			Needs further analysis in light of additional 115 kV load to be served from bus.
526	Device - Booker	-	06/01/16	\$200,000			Long range plan for north system will mitigate - verify.
540	Device - East 161	06/01/16	06/01/16	\$432,000			
Year 2017				\$550,000			
520	Device - Broken Arrow Water	06/01/17	06/01/17	\$550,000			

Project Tracking 2007, 4th Quarter

All 10 Year Horizon Upgrades



2 Year Horizon Projects



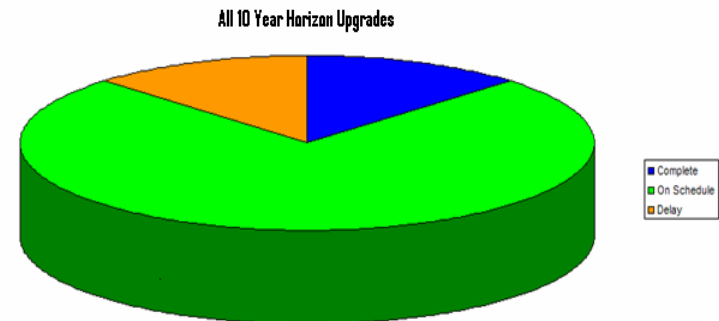


10 Year Horizon Projects

- **This Chart Tracks \$ 1.6B Total**
 - \$ 1,569,126,754 Transmission
 - \$ 66,061,450 Devices

- **Projects Completed in Blue, \$ 202M**
 - \$ 193,987,231 Transmission
 - \$ 8,333,181

- **Projects Delayed, \$ 204,449,225**
 - Mitigations for all except 5 projects
 - Issue: Project Ownership Contested on 5 projects
 - Staff working to identify project owners, will report to RSC





10 Year Horizon Projects

Yellow = Delay

- **53 projects, \$ 204M Total**
 - **16 Devices, \$ 8,333,181**
 - **37 Transmission, \$ 196,987,231**
 - **Approved mitigations for all except 5 projects**
 - **Staff initiated contacts with project owners for these 5 projects.**
 - **Working to identify mitigation plan.**



2 Year Horizon Projects Design and Construction needs to begin by 2009.

➤ This Chart Tracks \$ 194M Total

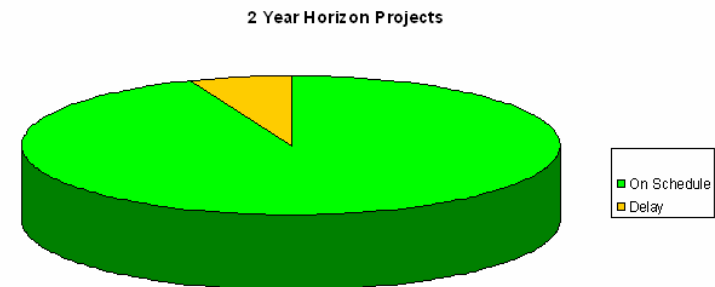
- \$ 187,251,200 Transmission
- \$ 6,240,000 Devices

➤ Projects On Schedule, \$ 182M

- \$ 177,783,200 Transmission
- \$ 4,000,000 Devices

➤ Projects Delayed, \$ 12M

- Mitigations for all projects





KAMO Review Update

Blackberry - Chouteau - GRDA 1 345kV

➤ **AECI & KAMO**

- **(Jasper) Blackberry – Chouteau - GRDA1 345kV transmission line**

➤ **AECI Requested TWG Interconnection review**

- **TWG process halted at staff request to analyze beyond standard network interconnection review.**

➤ **AECI/SPP Transmission Coordination Agreement**

- **SPP Staff visited with AECI, TCA discussions**
- **Staff conducting full network impacts analysis considering any proposed changes to system dispatched operations.**
- **Staff will present roll out results at next TWG, Nov 6 meeting in LR**